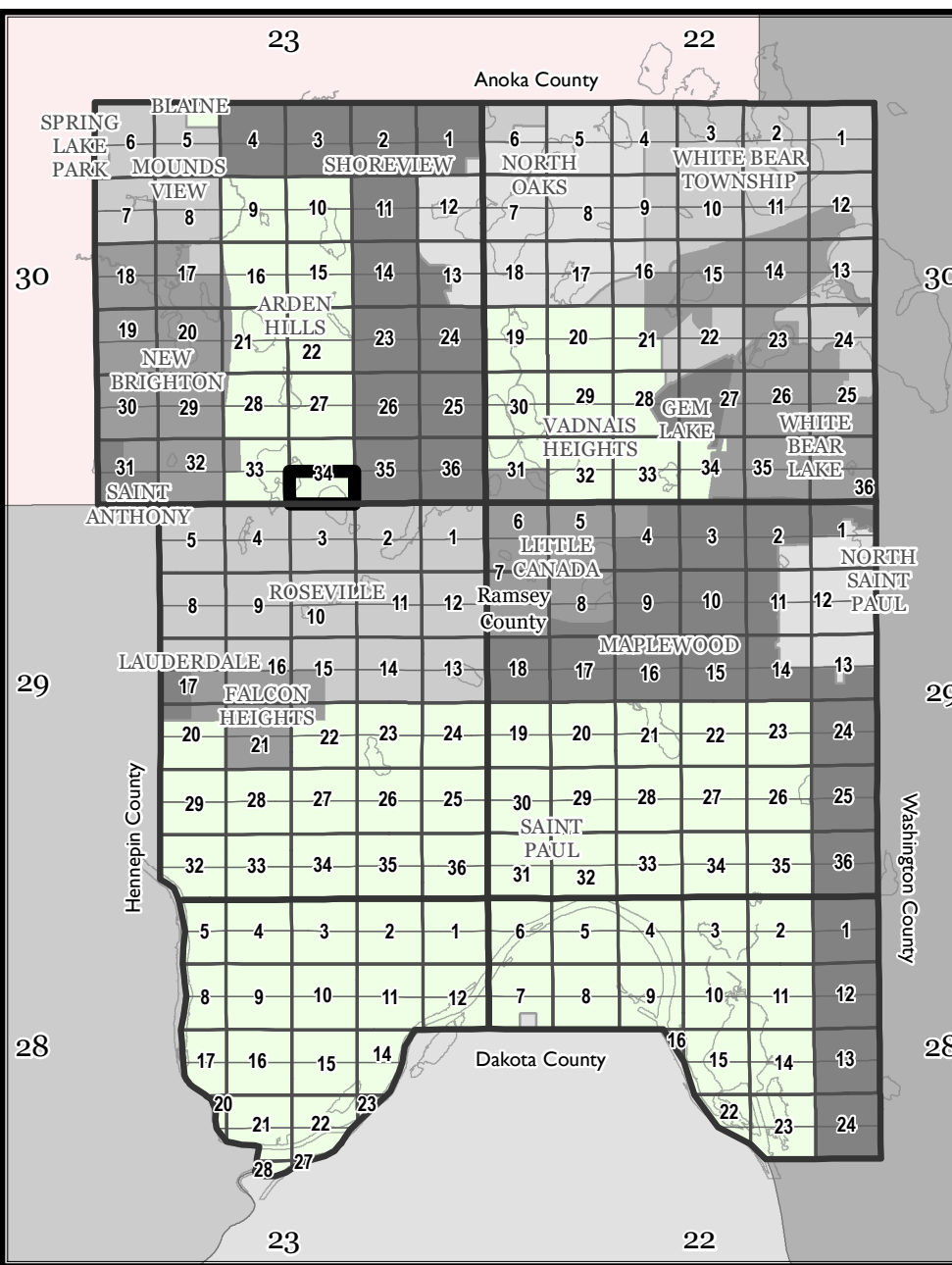
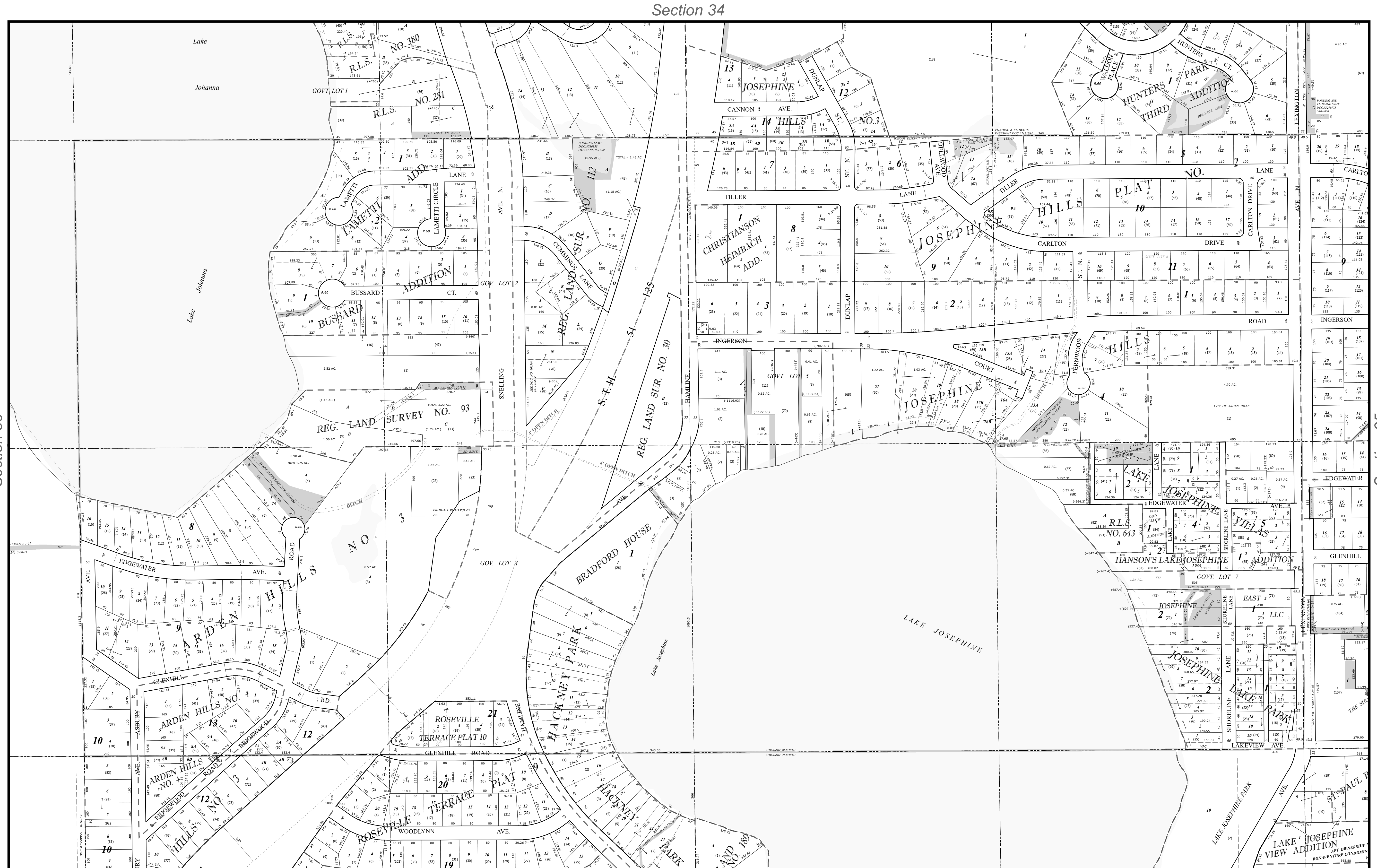


Ramsey County, MN Tax Parcel Map

S. 1/2
Sec. 34
T. 30 N
R. 23 W
 4th Principal
 Meridian



The information on this map is a compilation of Ramsey County Records. THE COUNTY DOES NOT WARRANT OR GUARANTEE THE ACCURACY OF THIS DATA. The County disclaims any liability for any injuries, time delays, or expenses you may suffer if you rely in any manner on the accuracy of this data.

Produced by Ramsey County Assessor's Office
 2/9/2024
 651-266-2000
 AskPropertyTaxandRecords@co.ramsey.mn.us

RAMSEY COUNTY
 Working with you to enhance our quality of life

Legend			
	Tax Parcel		Quarter Quarter
	Personal Property		Half Section
	Manufactured Home		Road Frontage
	Lots and Units		Easement
	Subs and Condos		Historic ROW
			Historic Lot Line
			ROW Centerline
			Water Line
			Wetland Line
			Survey Line
			Construction Line
			Special Centerline
			Railroad Right of Way
			Extension, Easement
			Extension, Sidelot
			Extension, Right of Way

1" = 200'
 1:2,400

