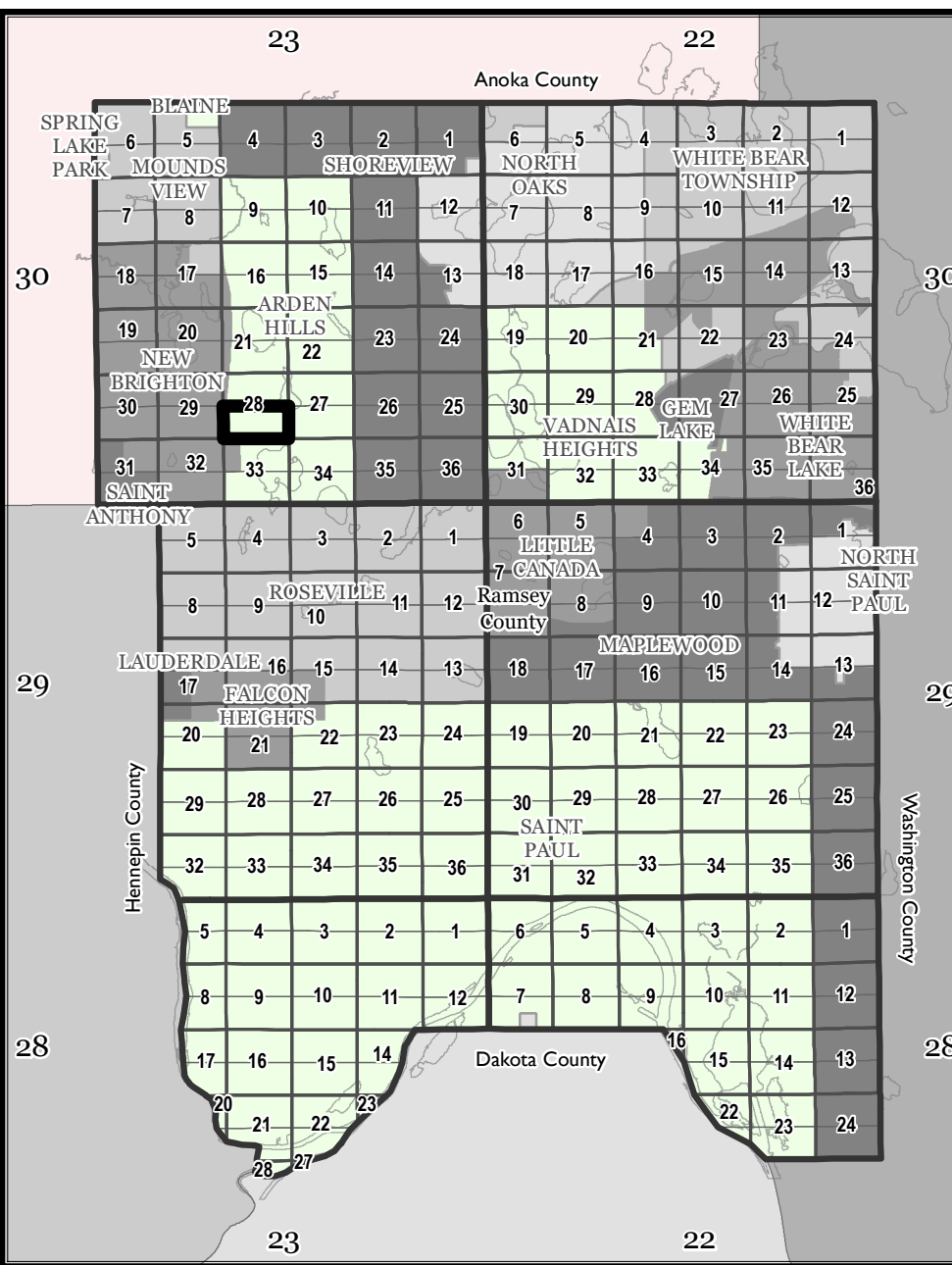
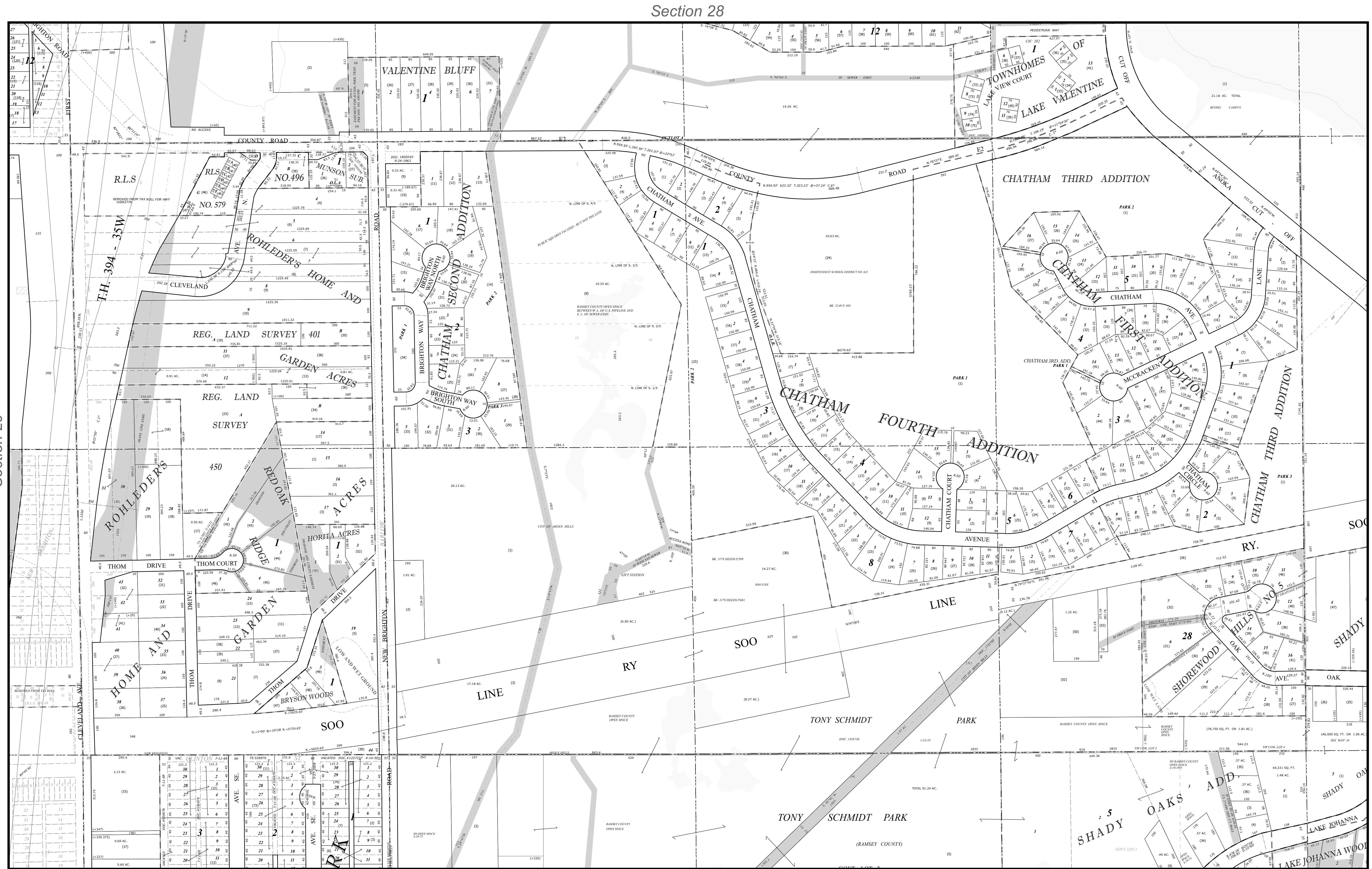


# Ramsey County, MN Tax Parcel Map

**S. 1/2**  
**Sec. 28**  
**T. 30 N**  
**R. 23 W**  
 4th Principal Meridian



The information on this map is a compilation of Ramsey County Records. THE COUNTY DOES NOT WARRANT OR GUARANTEE THE ACCURACY OF THIS DATA. The County disclaims any liability for any injuries, time delays, or expenses you may suffer if you rely in any manner on the accuracy of this data.

Produced by Ramsey County Assessor's Office  
 2/9/2024  
 651-266-2000  
 AskPropertyTaxandRecords@co.ramsey.mn.us

**RAMSEY COUNTY**  
 Working with you to enhance our quality of life

| Legend |                         |
|--------|-------------------------|
|        | Tax Parcel              |
|        | Personal Property       |
|        | Manufactured Home       |
|        | Lots and Units          |
|        | Subs and Condos         |
|        | Quarter Quarter         |
|        | Half Section            |
|        | Road Frontage           |
|        | Easement                |
|        | Historic ROW            |
|        | Historic Lot Line       |
|        | ROW Centerline          |
|        | Water Line              |
|        | Wetland Line            |
|        | Radius Line             |
|        | Survey Line             |
|        | Construction Line       |
|        | Special Centerline      |
|        | Railroad Right of Way   |
|        | Extension, Easement     |
|        | Extension, Sidelot      |
|        | Extension, Right of Way |

Section 33

1" = 200'  
 1:2,400

