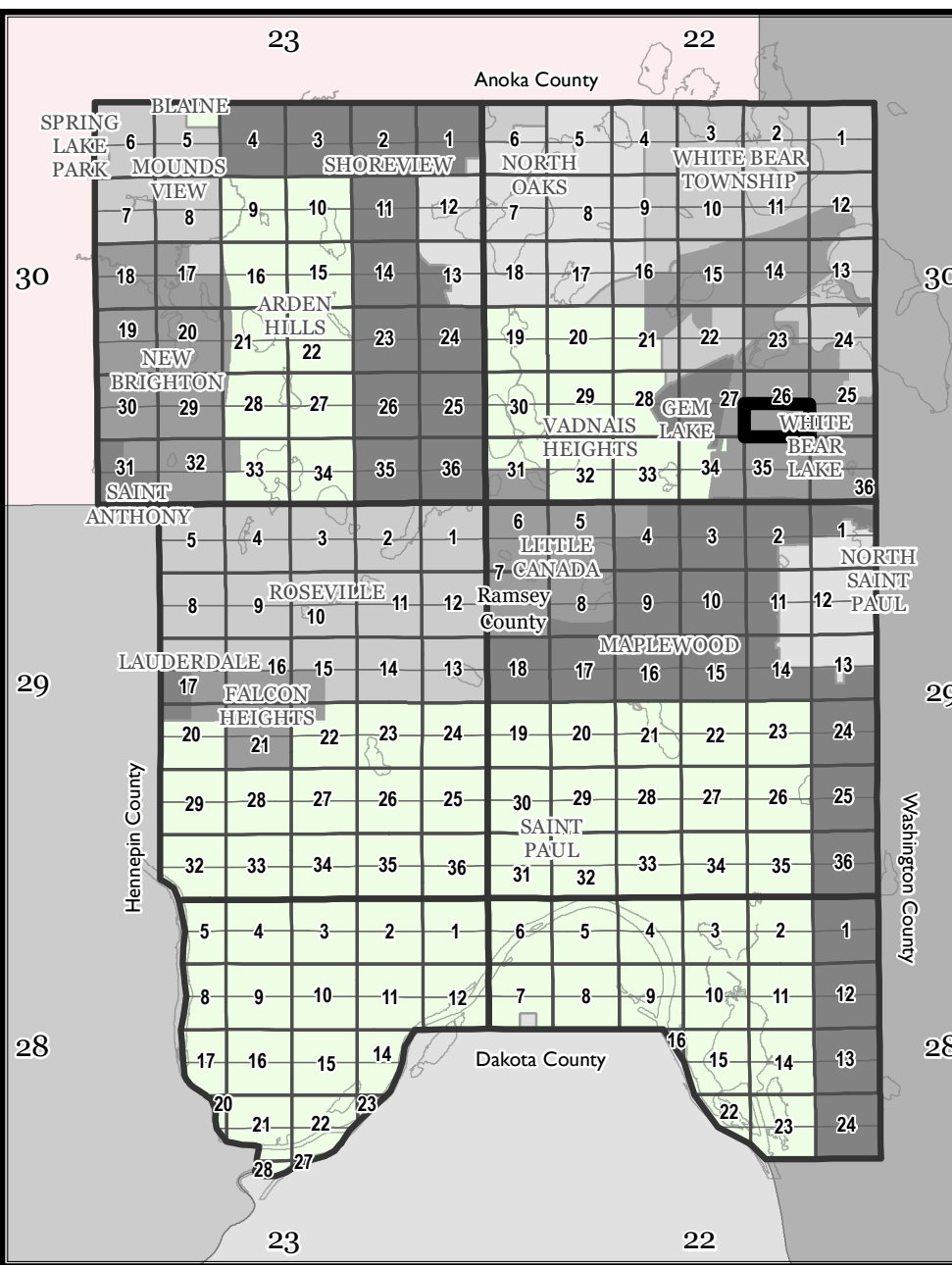
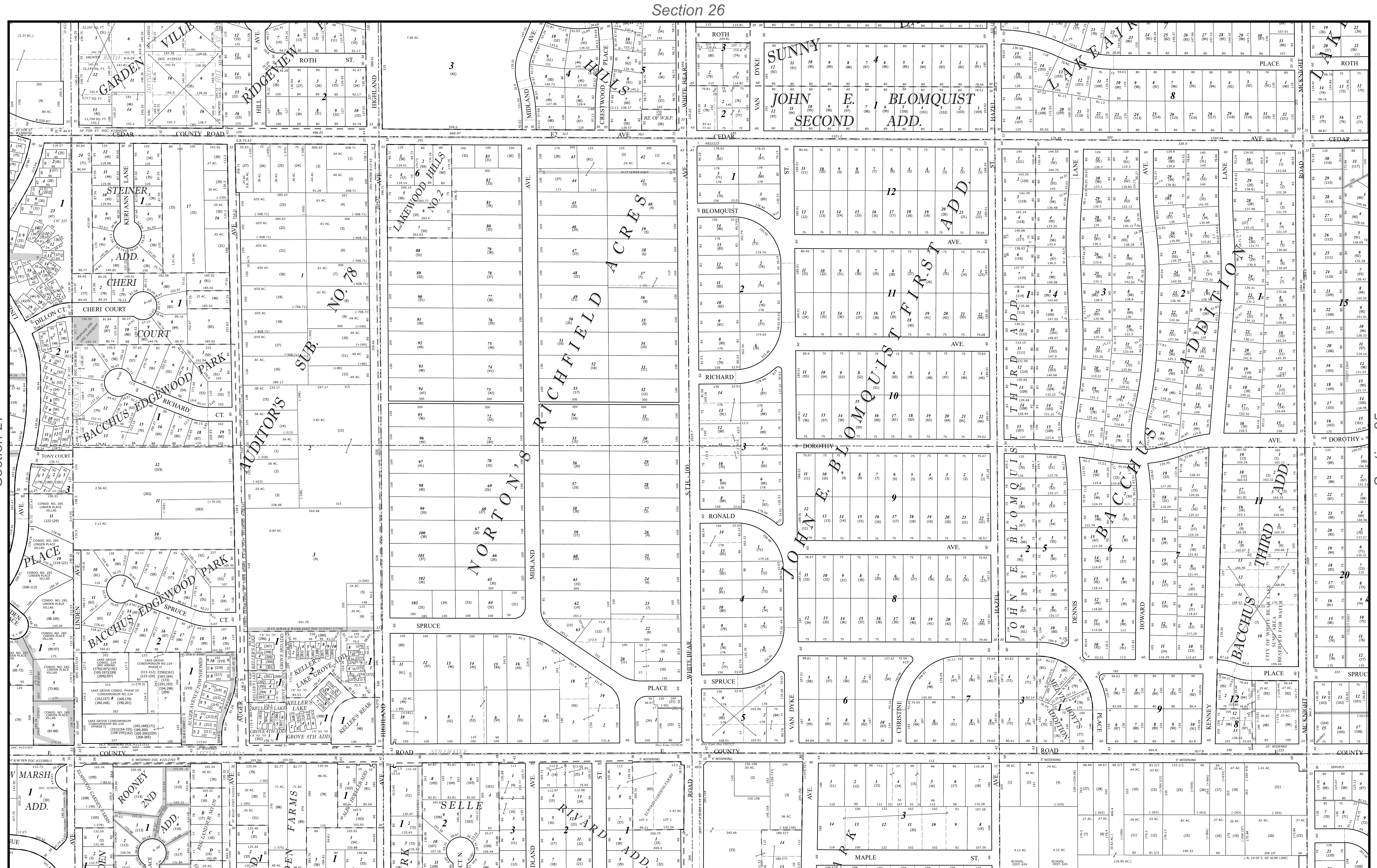


Ramsey County, MN Tax Parcel Map

S. 1/2
Sec. 26
T. 30 N
R. 22 W
 4th Principal Meridian



Legend			

Section 35

1" = 200'
 1:2,400
 0 100 200 Feet

Produced by Ramsey County Assessor's Office
 2/9/2024
 651-266-2000
 AskPropertyTaxandRecords@co.ramsey.mn.us

