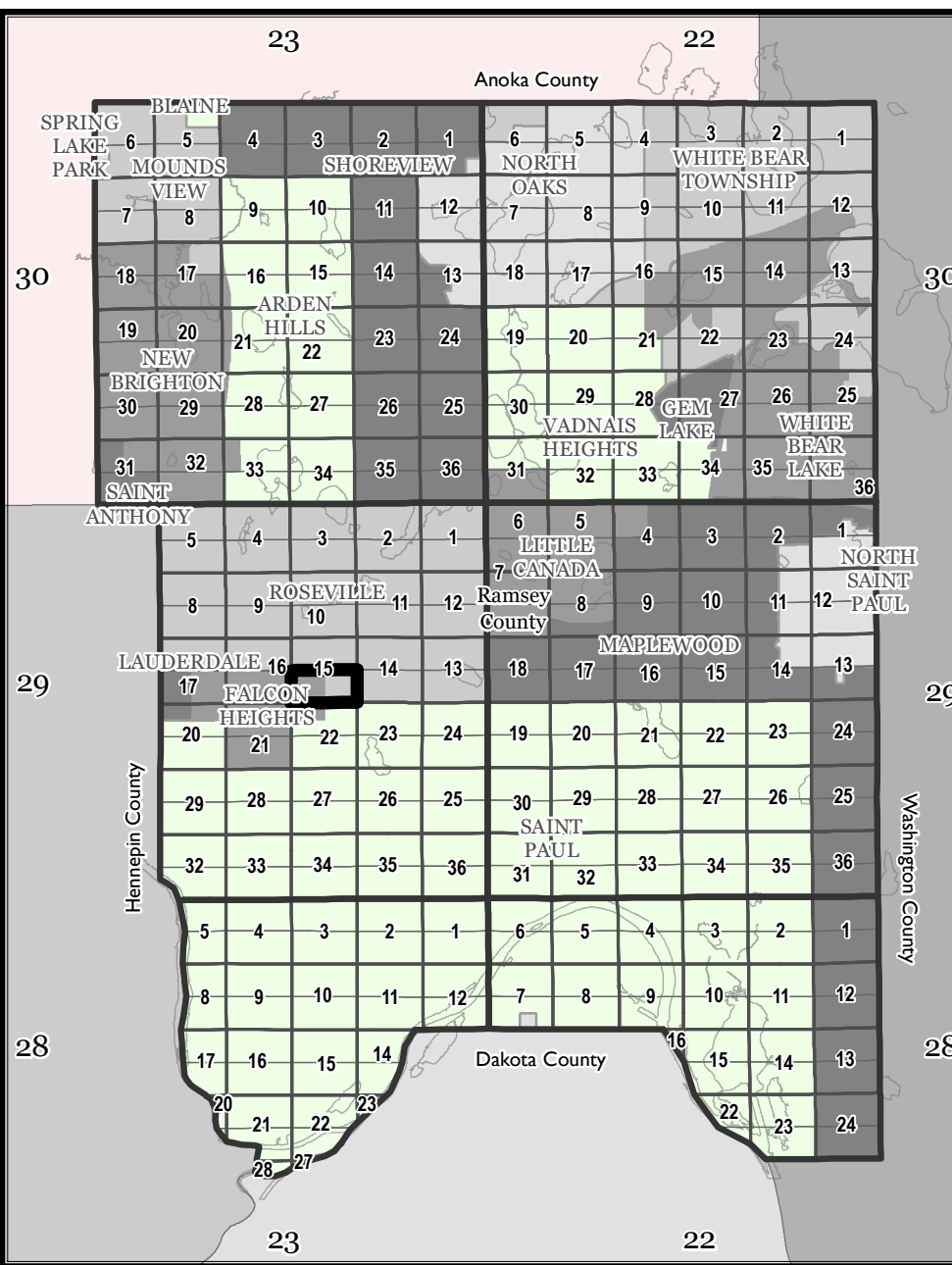
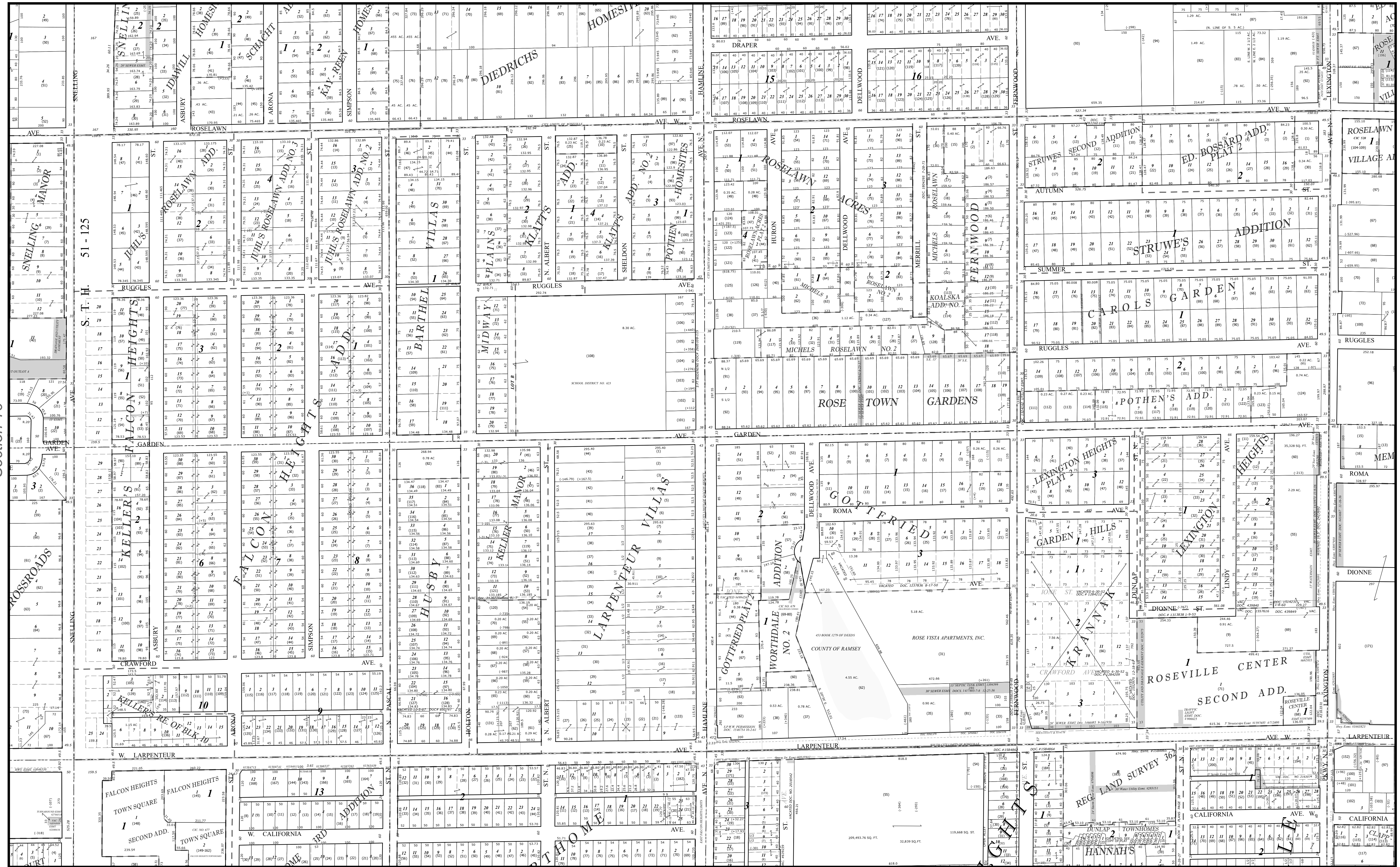


Ramsey County, MN Tax Parcel Map

S. 1/2
Sec. 15
T. 29 N
R. 23 W
 4th Principal Meridian

Section 15



Legend

1" = 200'
 1:2,400
 0 100 200 Feet

Produced by Ramsey County Assessor's Office
 2/9/2024
 651-266-2000
 AskPropertyTaxandRecords@co.ramsey.mn.us

