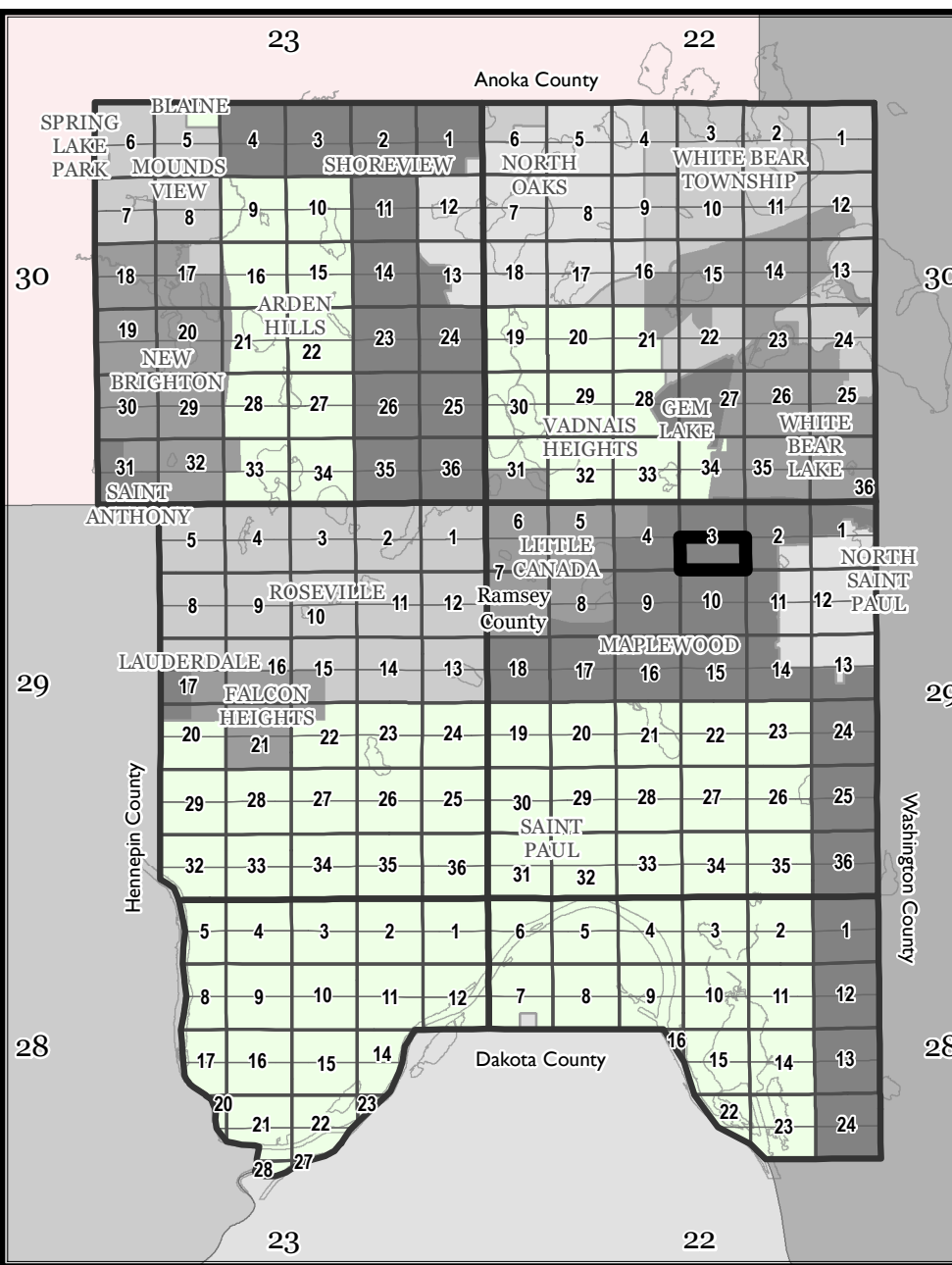
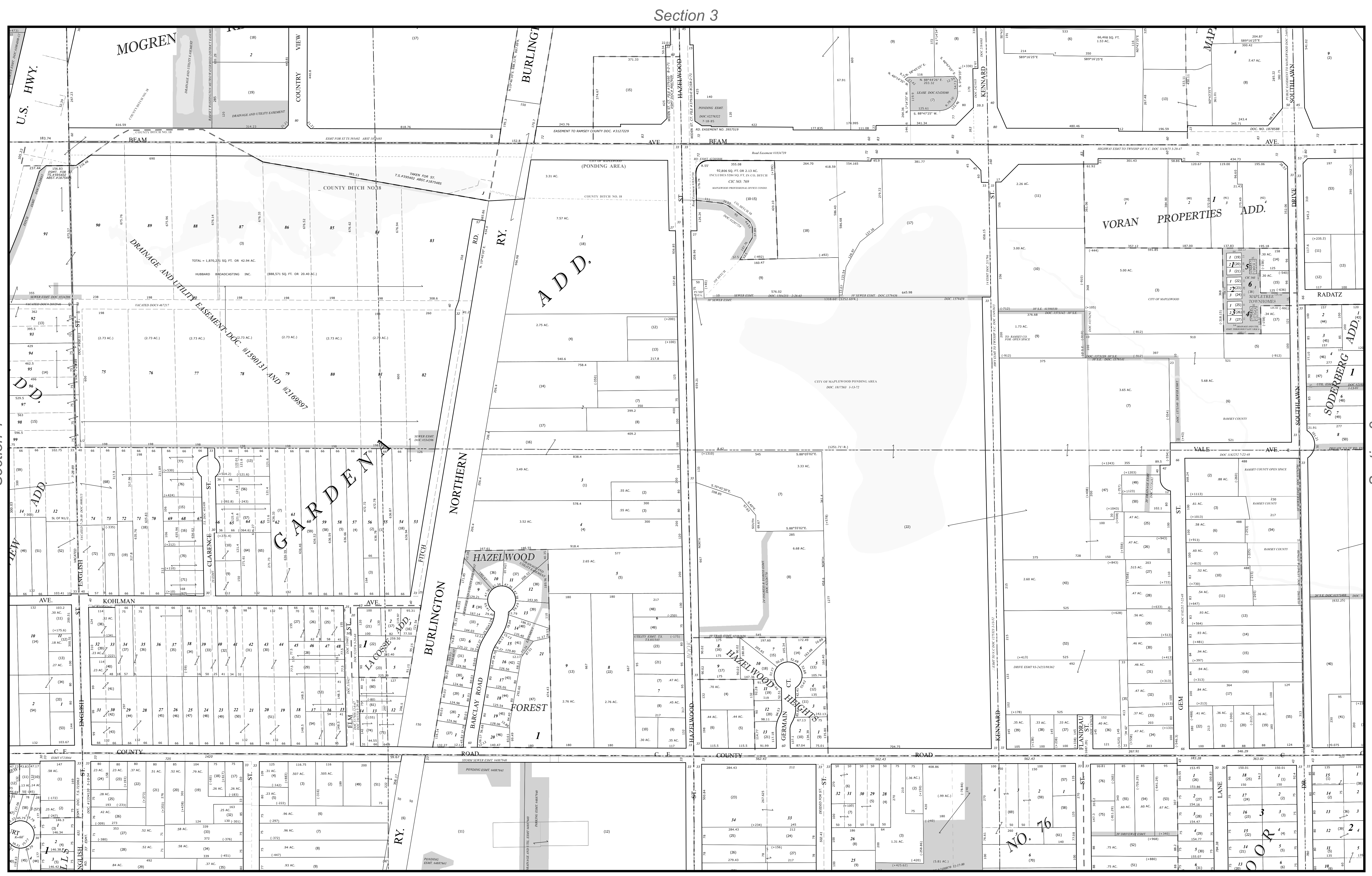


# Ramsey County, MN Tax Parcel Map

**S. 1/2**  
**Sec. 3**  
**T. 29 N**  
**R. 22 W**  
 4th Principal Meridian



The information on this map is a compilation of Ramsey County Records. THE COUNTY DOES NOT WARRANT OR GUARANTEE THE ACCURACY OF THIS DATA. The County disclaims any liability for any injuries, time delays, or expenses you may suffer if you rely in any manner on the accuracy of this data.

Produced by Ramsey County Assessor's Office  
 2/9/2024  
 651-266-2000  
 AskPropertyTaxandRecords@co.ramsey.mn.us  
**RAMSEY COUNTY**  
 Working with you to enhance our quality of life

Legend	
	Tax Parcel
	Personal Property
	Manufactured Home
	Lots and Units
	Subs and Condos
	Quarter Quarter
	Half Section
	Road Frontage
	Easement
	Historic ROW
	Historic Lot Line
	ROW Centerline
	Water Line
	Wetland Line
	Radius Line
	Survey Line
	Construction Line
	Special Centerline
	Railroad Right of Way
	Extension, Easement
	Extension, Sidelot
	Extension, Right of Way

Section 10

1" = 200'  
 1:2,400

