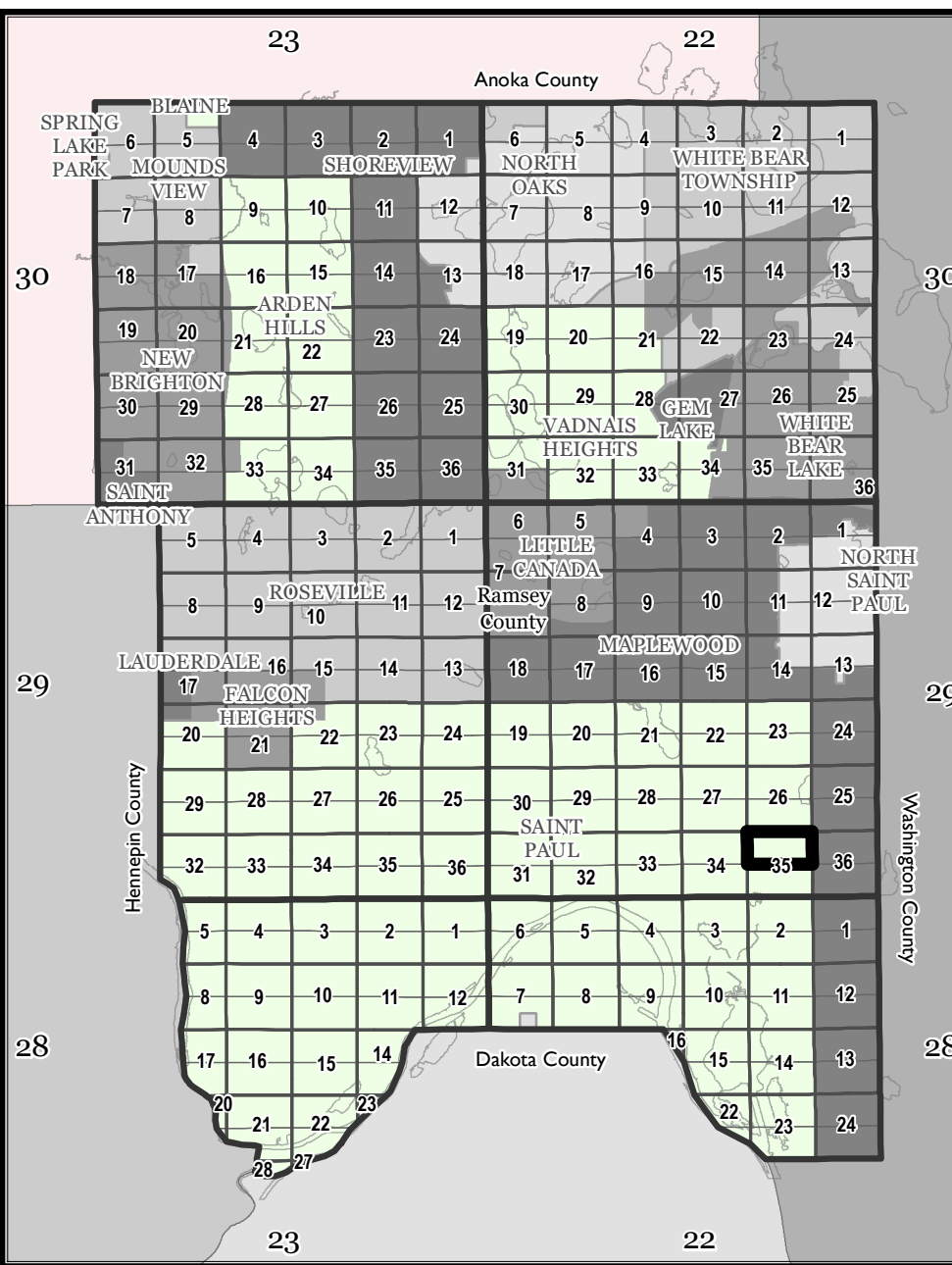


Ramsey County, MN Tax Parcel Map

N 35-29-22

N. 1/2
Sec. 35
T. 29 N
R. 22 W
4th Principal Meridian

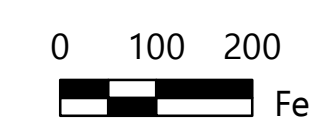
Section 26



Legend

Section 35

1" = 200'
1:2,400



The information on this map is a compilation of Ramsey County Records. THE COUNTY DOES NOT WARRANT OR GUARANTEE THE ACCURACY OF THIS DATA. The County disclaims any liability for any injuries, time delays, or expenses you may suffer if you rely in any manner on the accuracy of this data.

Produced by Ramsey County Assessor's Office
2/9/2024
651-266-2000
AskPropertyTaxandRecords@co.ramsey.mn.us

RAMSEY COUNTY
Working with you to enhance our quality of life

N 35-29-22