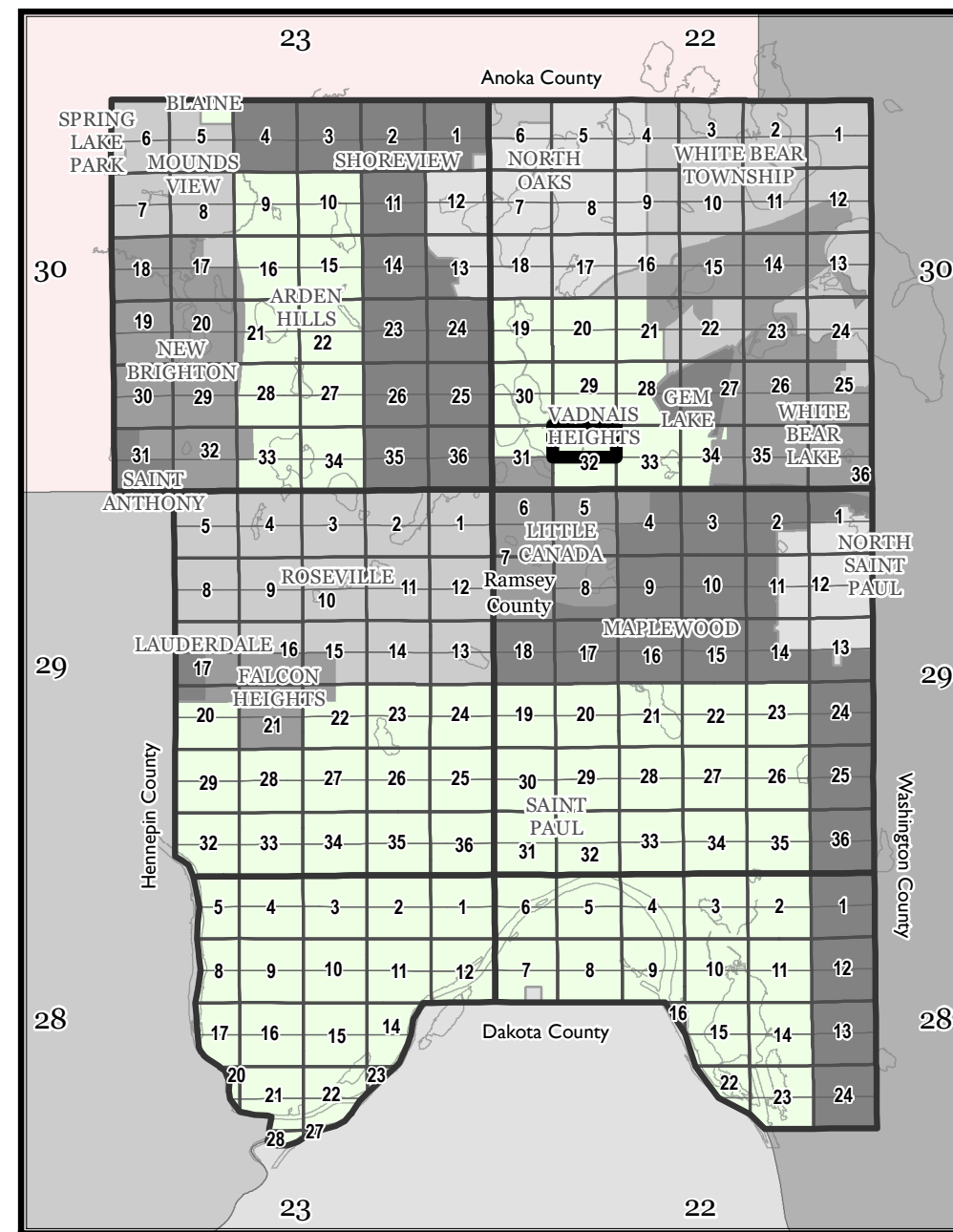
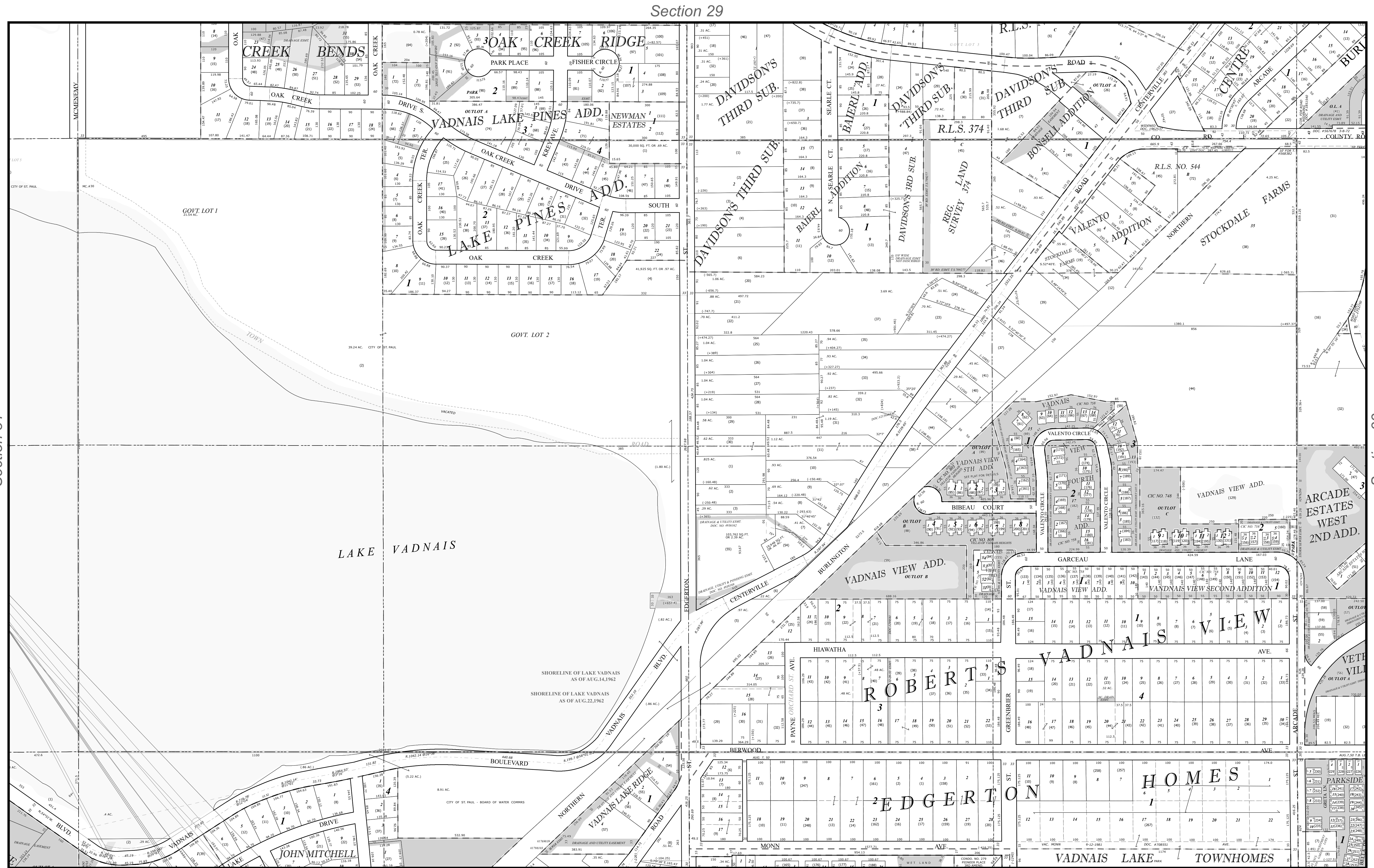


Ramsey County, MN Tax Parcel Map

N 32-30-22

N. 1/2
Sec. 32
T. 30 N
R. 22 W
 4th Principal
 Meridian



The information on this map is a compilation of Ramsey County Records. THE COUNTY DOES NOT WARRANT OR GUARANTEE THE ACCURACY OF THIS DATA. The County disclaims any liability for any injuries, time delays, or expenses you may suffer if you rely in any manner on the accuracy of this data.

Produced by Ramsey County Assessor's Office
 2/9/2024
 651-266-2000
 AskPropertyTaxandRecords@co.ramsey.mn.us



Legend			

Section 32

1" = 200'
 1:2,400



0 100 200
 Feet

N 32-30-22