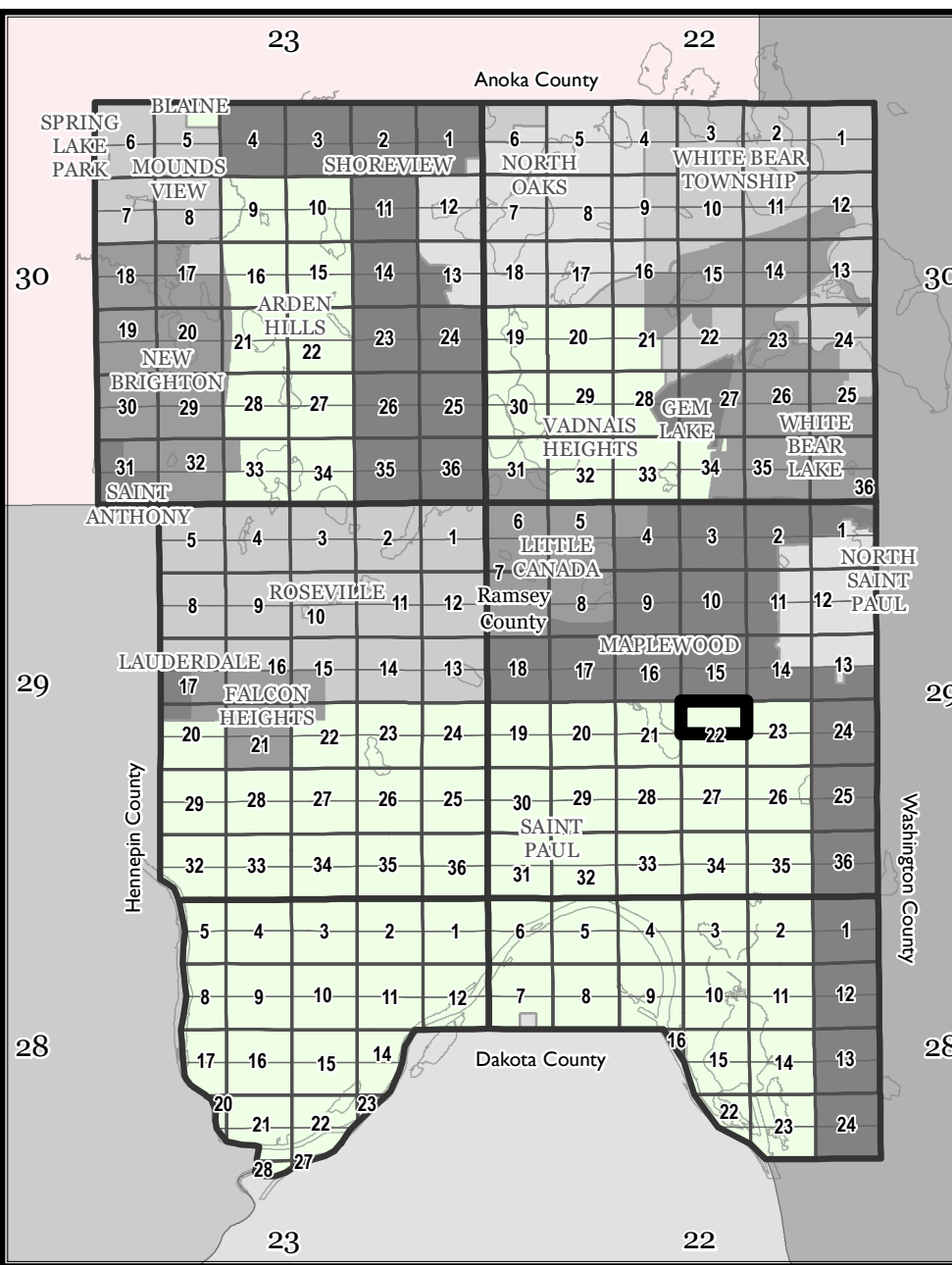
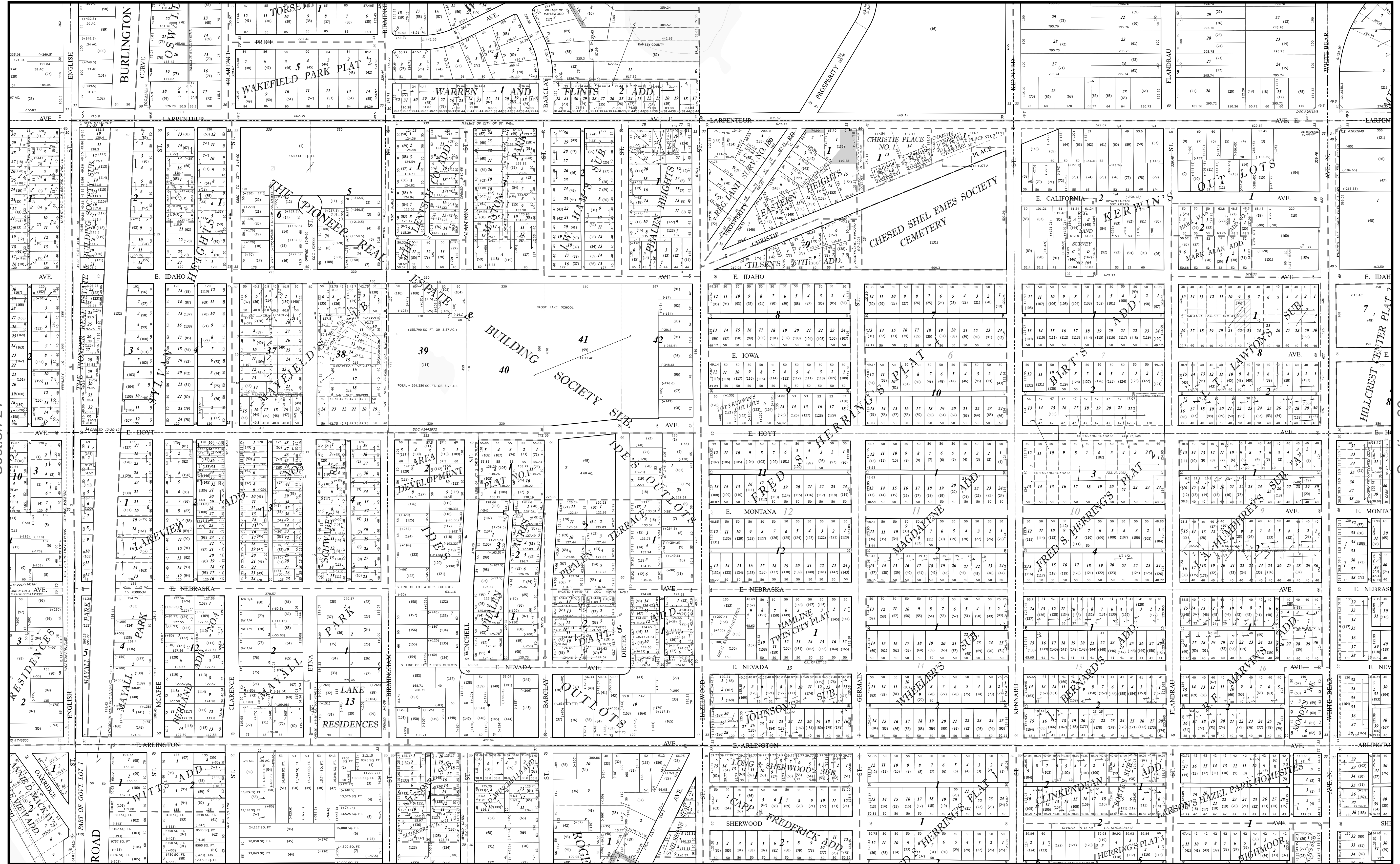


Ramsey County, MN Tax Parcel Map

N. 1/2
Sec. 22
T. 29 N
R. 22 W
4th Principal
Meridian

Section 15



Legend

Tax Parcel	Quarter Quarter	Historic Lot Line	Radius Line	Railroad Right of Way
Personal Property	Half Section	ROW Centerline	Survey Line	Extension, Easement
Manufactured Home	Road Frontage	Water Line	Construction Line	Extension, Sidelot
Lots and Units	Easement	Wetland Line	Special Centerline	Extension, Right of Way
Subs and Condos	Historic ROW			

Section 22

1" = 200'
1:2,400



The information on this map is a compilation of Ramsey County Records. THE COUNTY DOES NOT WARRANT OR GUARANTEE THE ACCURACY OF THIS DATA. The County disclaims any liability for any injuries, time delays, or expenses you may suffer if you rely in any manner on the accuracy of this data.

Produced by Ramsey County Assessor's Office
2/9/2024
651-266-2000
AskPropertyTaxandRecords@co.ramsey.mn.us

RAMSEY COUNTY
Working with you to enhance our quality of life