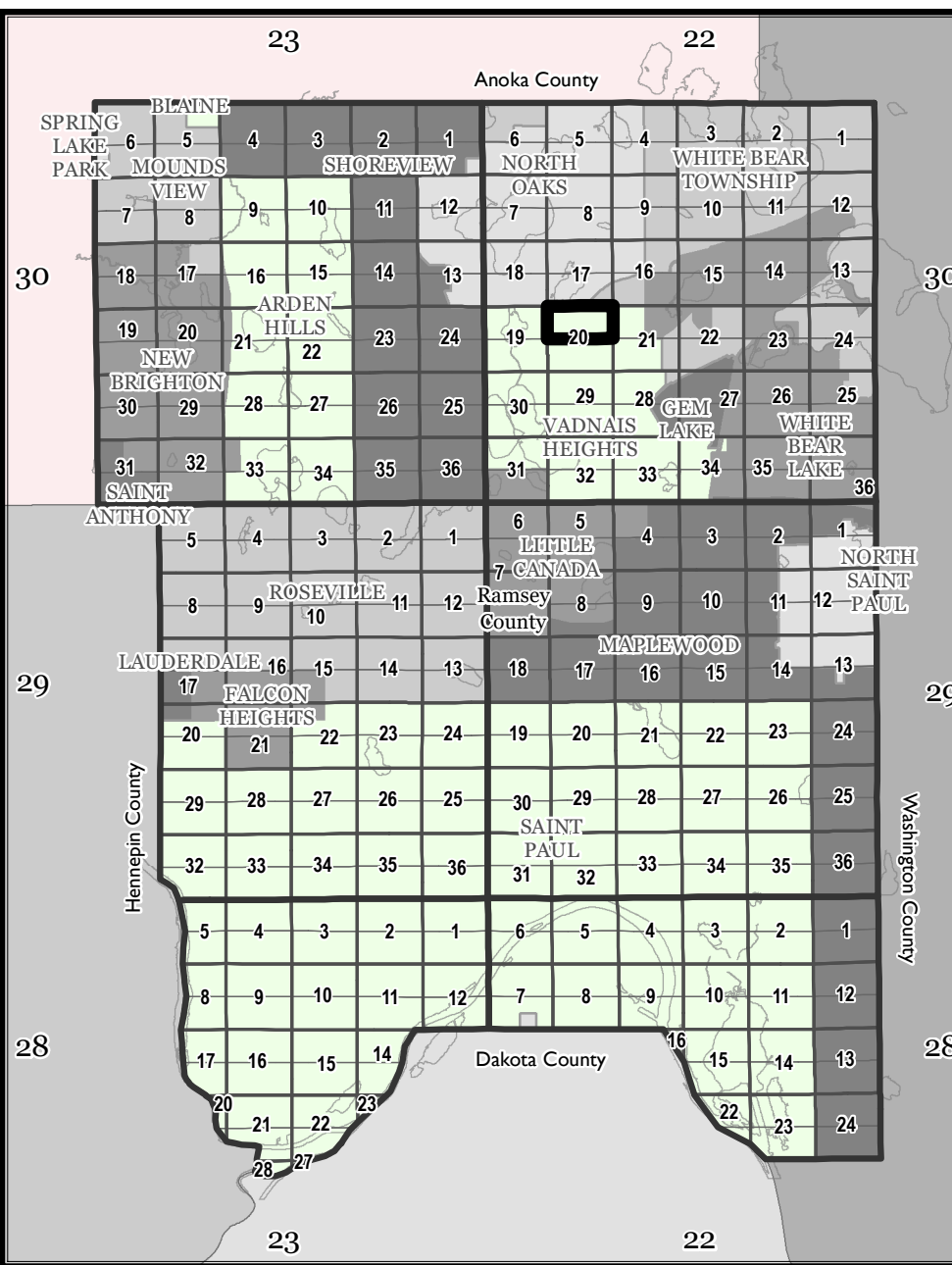
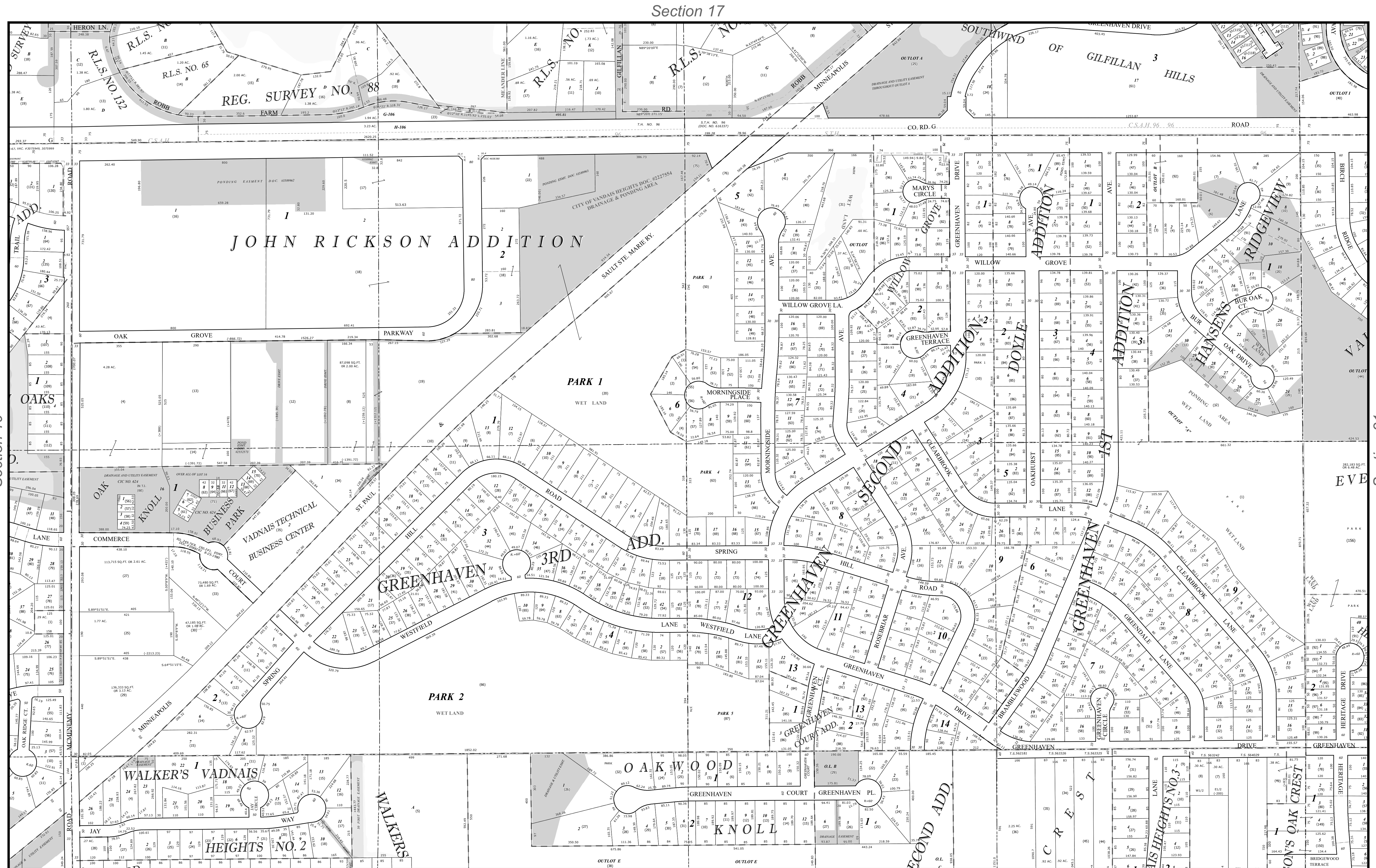


# Ramsey County, MN Tax Parcel Map

N 20-30-22

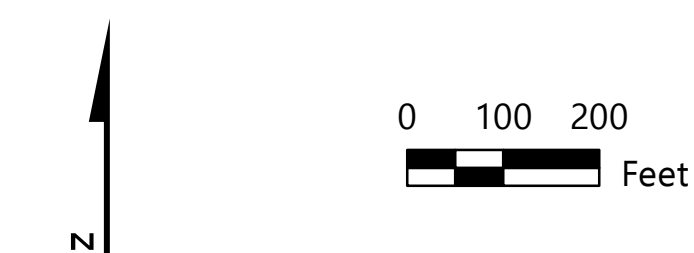
**N. 1/2**  
**Sec. 20**  
**T. 30 N**  
**R. 22 W**  
 4th Principal Meridian



Legend			

Section 20

1" = 200'  
 1:2,400



Produced by Ramsey County Assessor's Office  
 2/9/2024  
 651-266-2000  
 AskPropertyTaxandRecords@co.ramsey.mn.us



N 20-30-22