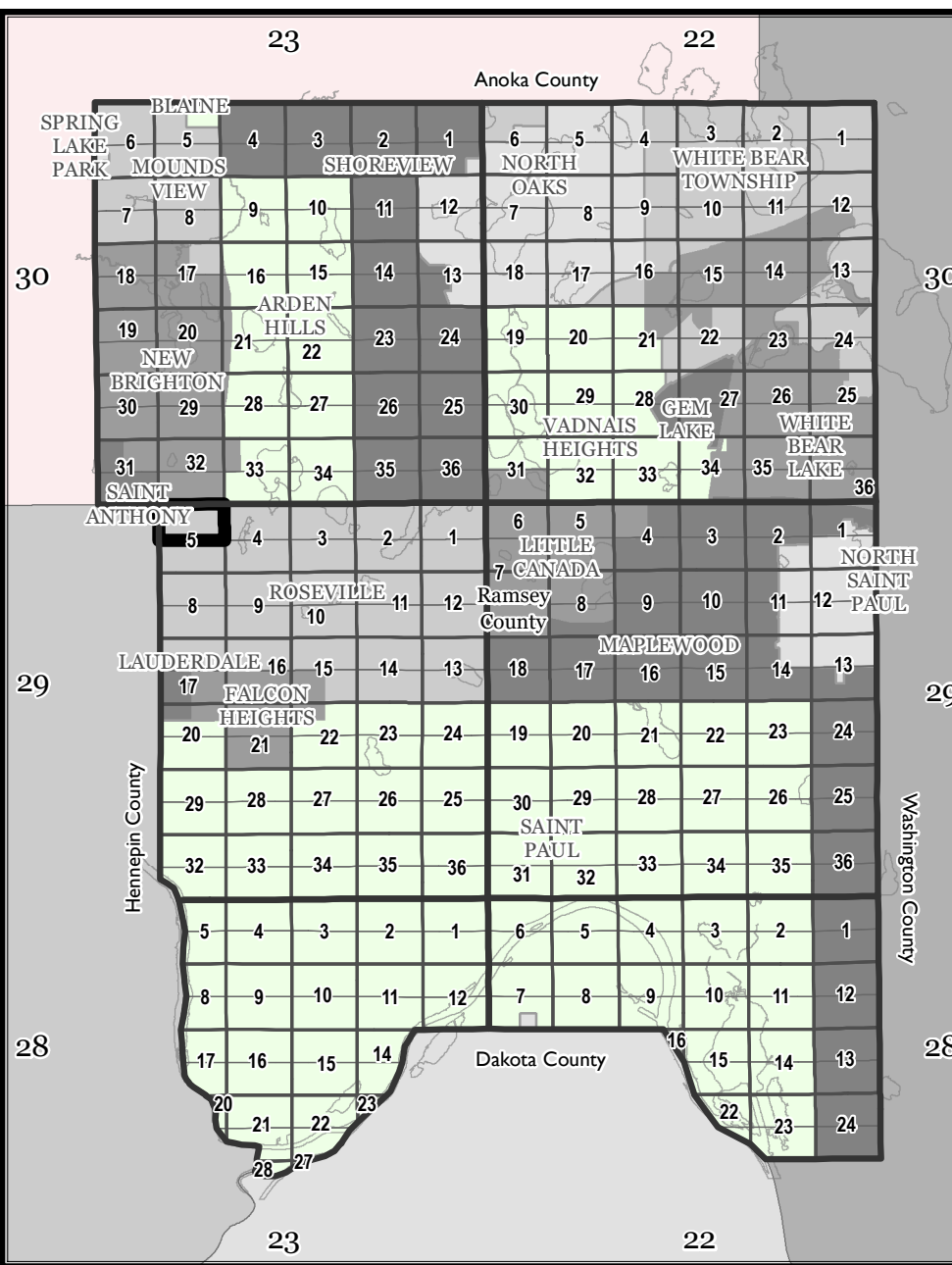


Ramsey County, MN Tax Parcel Map

N 05-29-23

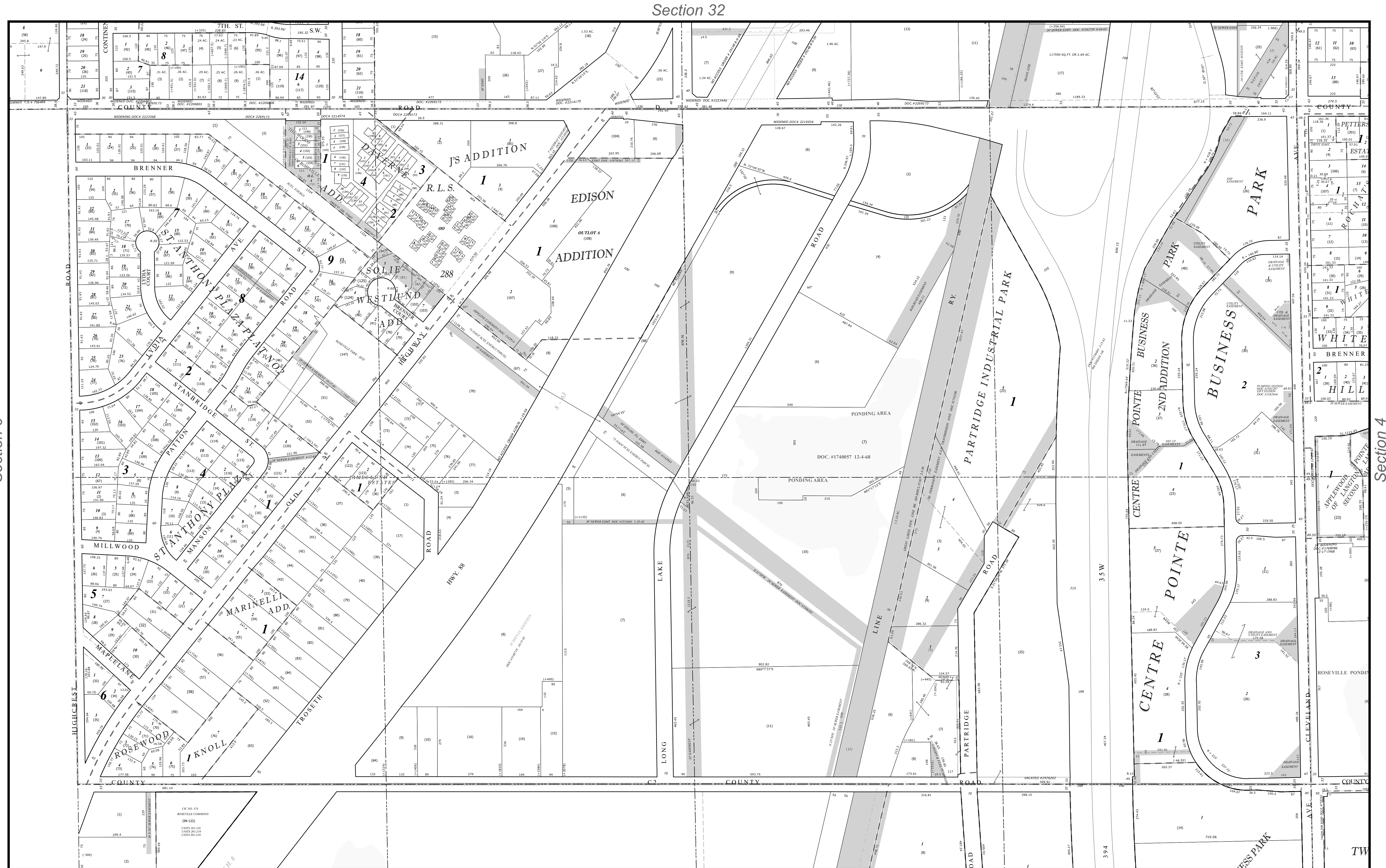
N. 1/2
Sec. 5
T. 29 N
R. 23 W
 4th Principal Meridian



The information on this map is a compilation of Ramsey County Records. THE COUNTY DOES NOT WARRANT OR GUARANTEE THE ACCURACY OF THIS DATA. The County disclaims any liability for any injuries, time delays, or expenses you may suffer if you rely in any manner on the accuracy of this data.

Produced by Ramsey County Assessor's Office
 2/9/2024
 651-266-2000
 AskPropertyTaxandRecords@co.ramsey.mn.us

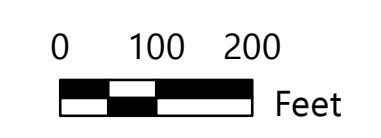
RAMSEY COUNTY
 Working with you to enhance our quality of life



Legend			
	Tax Parcel		Quarter Quarter
	Personal Property		Half Section
	Manufactured Home		Road Frontage
	Lots and Units		Easement
	Subs and Condos		Historic ROW
	Historic Lot Line		Radius Line
	ROW Centerline		Survey Line
	Water Line		Construction Line
	Wetland Line		Special Centerline
	Railroad Right of Way		Extension, Easement
	Extension, Sidelot		Extension, Right of Way

Section 5

1" = 200'
 1:2,400



N 05-29-23