

OFFICE OF COUNTY ENGINEER
RAMSEY COUNTY
MINN.
PAUL N. COATES
COUNTY ENGINEER

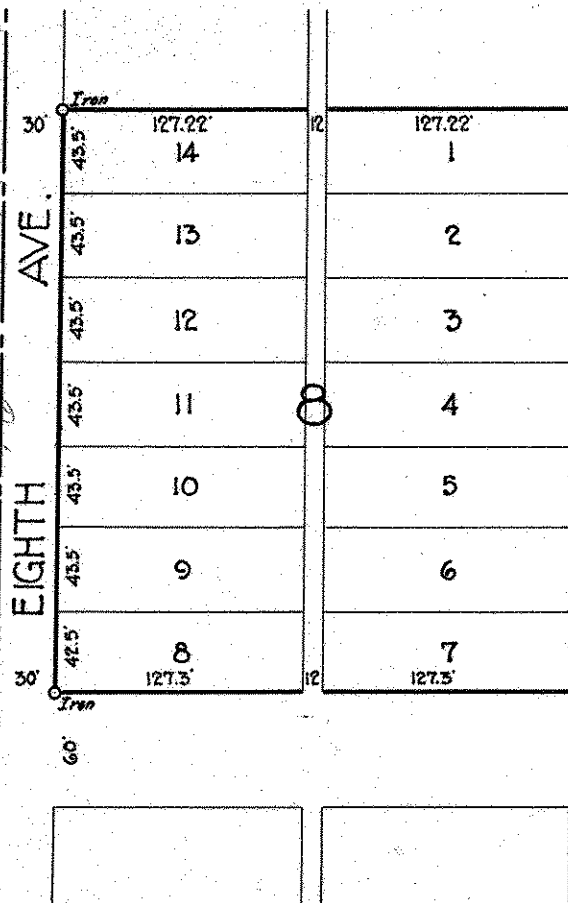
APRIL 14, 1927.

SCALE - 1" = 100'

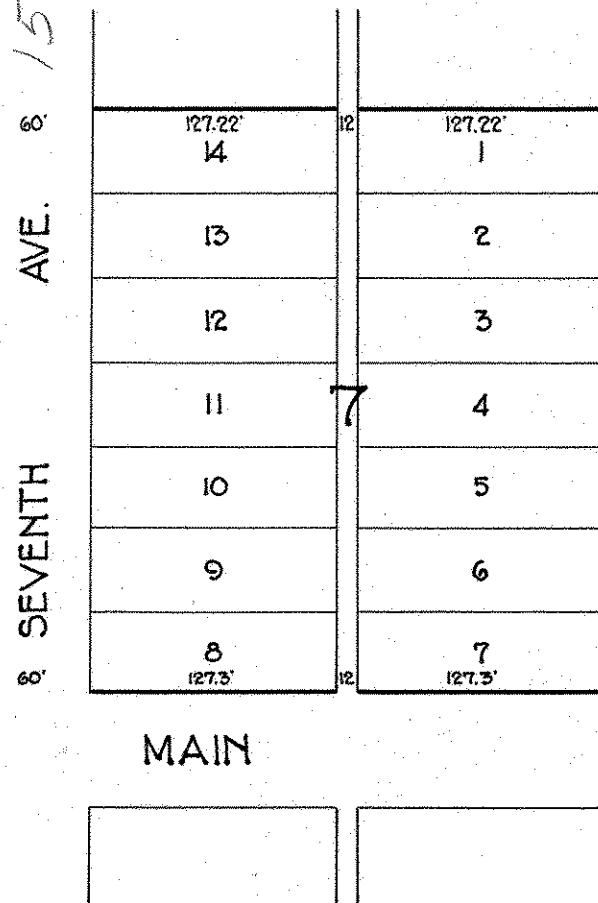
BLOCKS 5, 6, 7 & 8 OF MOUNDS VIEW PARK

N

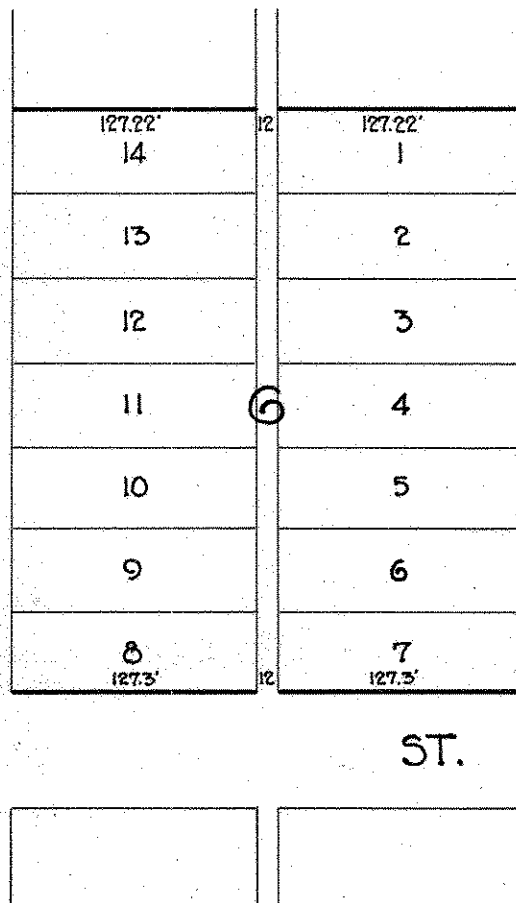
16 TH AVE NW



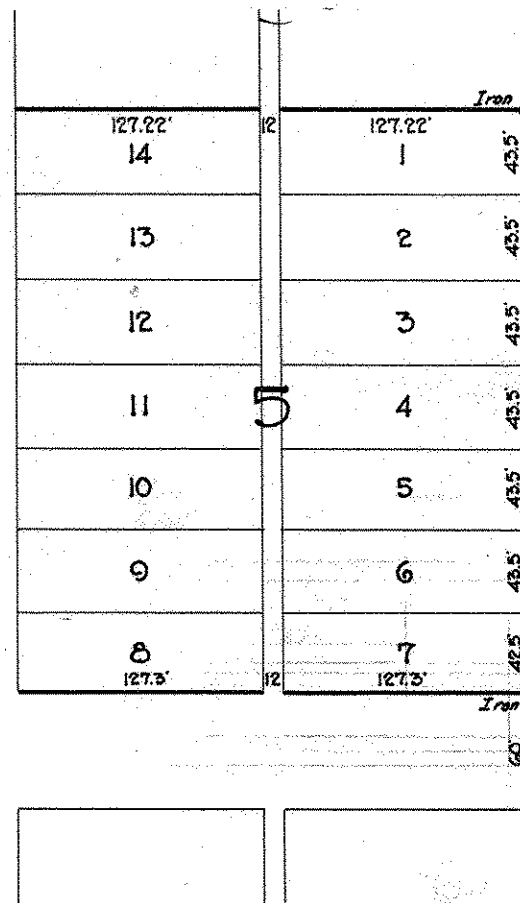
15 TH AVE NW



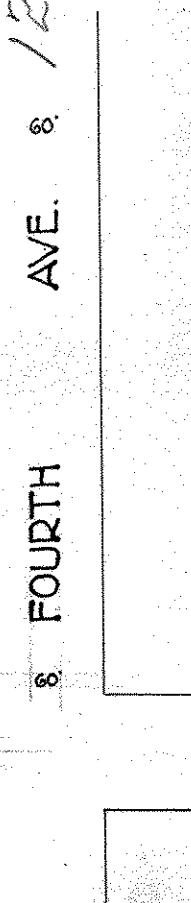
14 TH



13 TH



12 TH AVE N.W.



MAIN

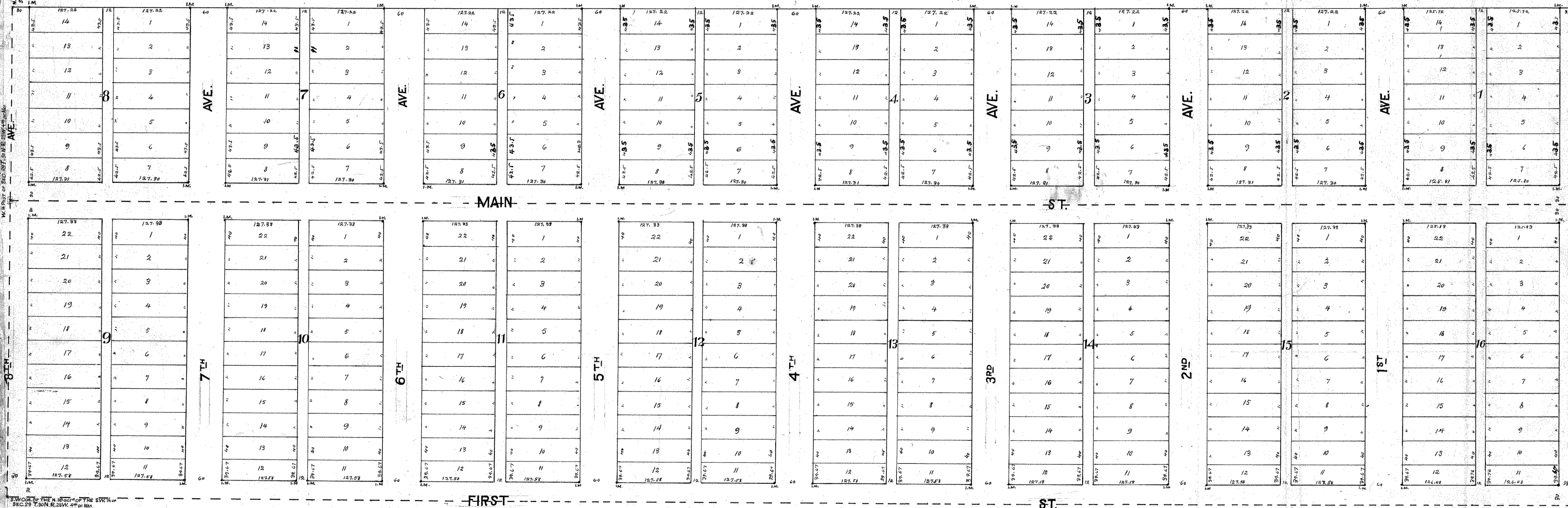
ST.

MOUND'S VIEW PARK

SCALE: 1 INCH = 100 FT

P.M. Dahl Surveyor 1889

W. 1/2 Sec. 27, T. 30N, R. 23W, 4th Mer.



W. 1/2 Sec. 27, T. 30N, R. 23W, 4th Mer.

E. 1/2 Sec. 27, T. 30N, R. 23W, 4th Mer.