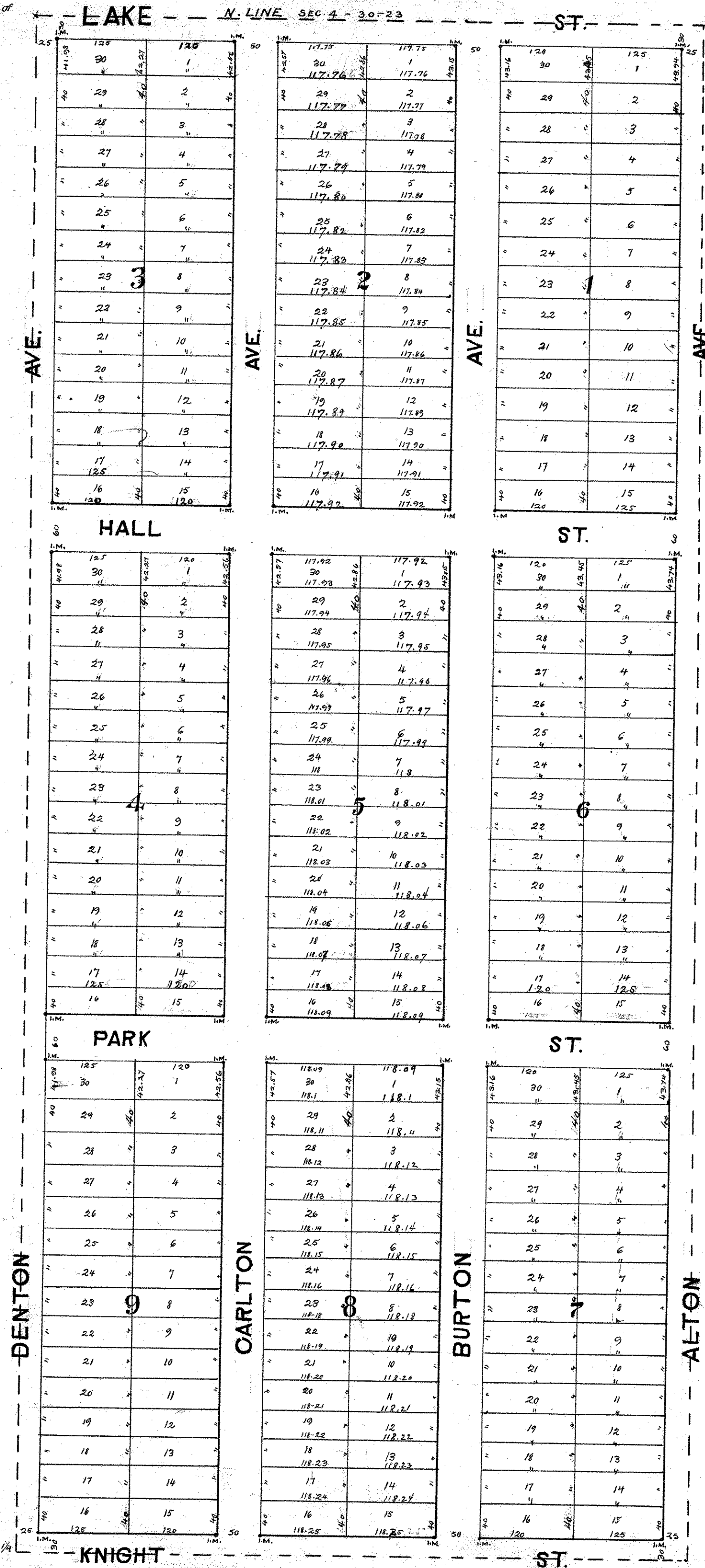


LONG LAKE PARK

SCALE: 1/20 FT. = 1 INCH

D.W. ROSS, Surveyor 1887

N.W. Cor. of the N.W. 1/4 of the N.E. 1/4 of Sec. 4 T. 30 R. 23



SW Cor. of the N.W. 1/4 of the N.E. 1/4 Sec. 4 T. 30 R. 23