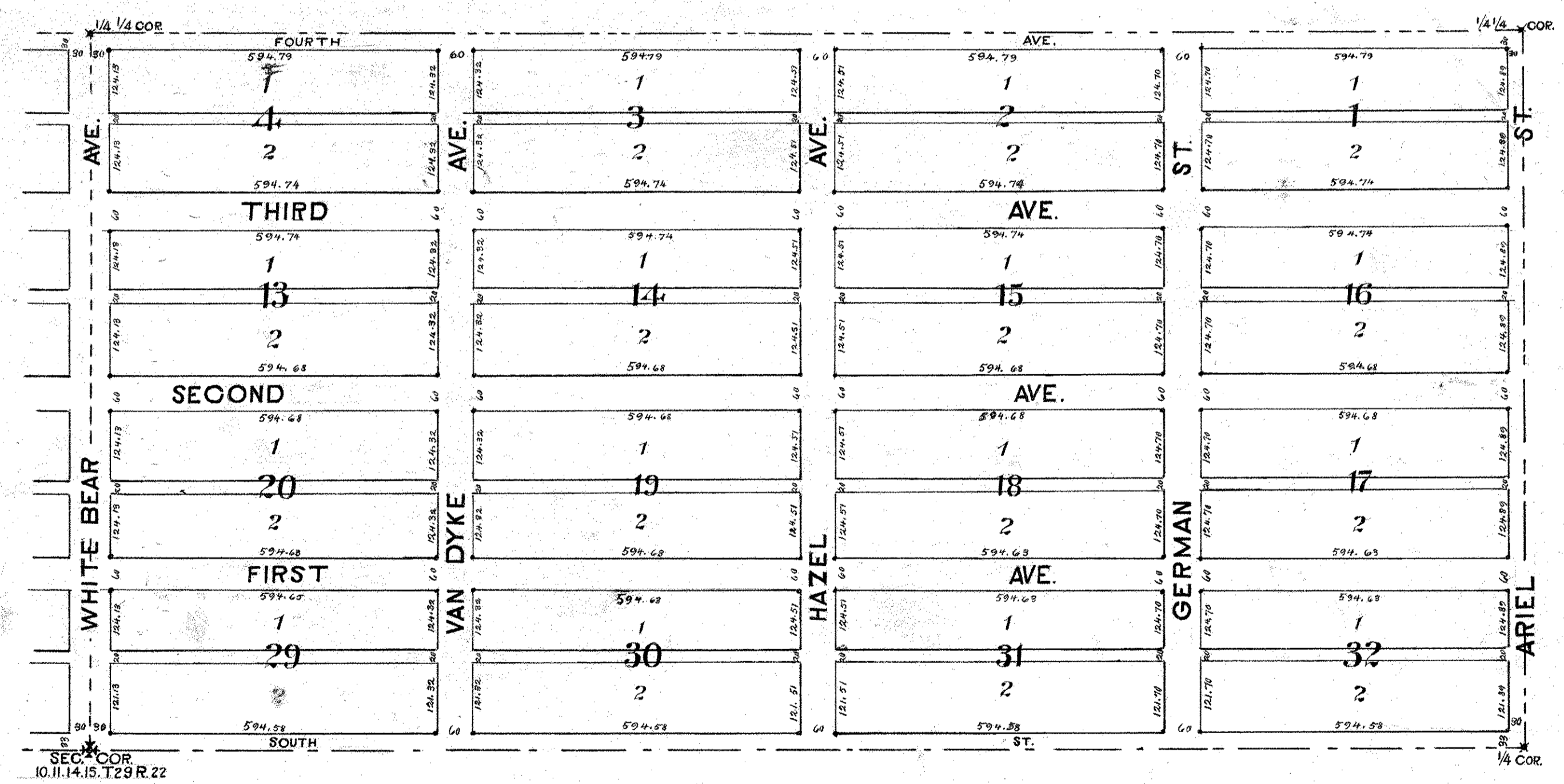
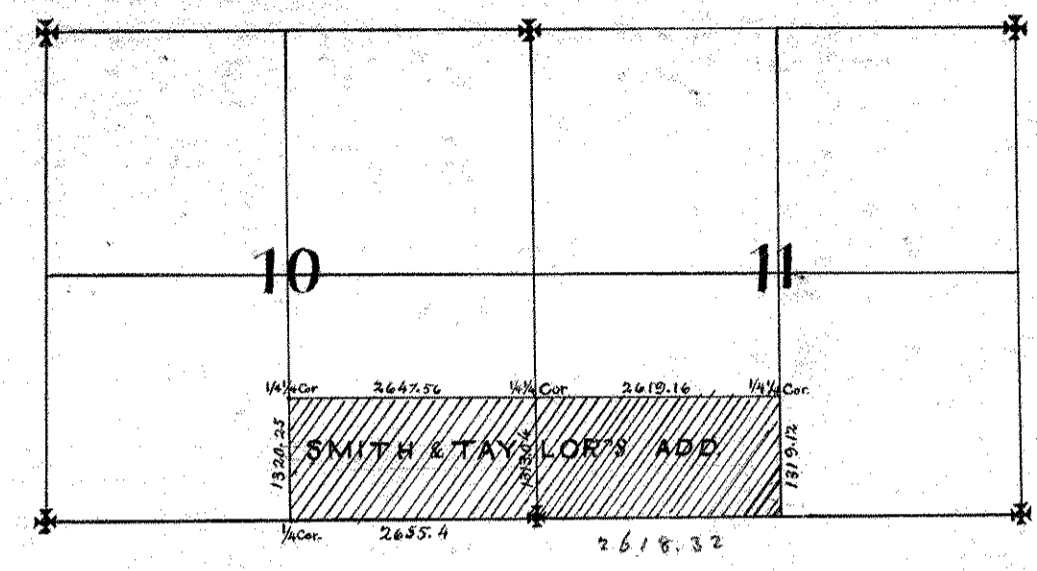


SMITH AND TAYLOR'S ADD.
TO
NORTH ST. PAUL

• indicates iron monument.

H.L. Phillips Surveyor 1887

T. 29 N. R. 22 W.



Description:— The S. 1/2 of the S.W. 1/4 of Sec. 11 T. 29 R. 22 and the S. 1/2 of the S.E. 1/4 of Sec. 10 T. 29 R. 22