

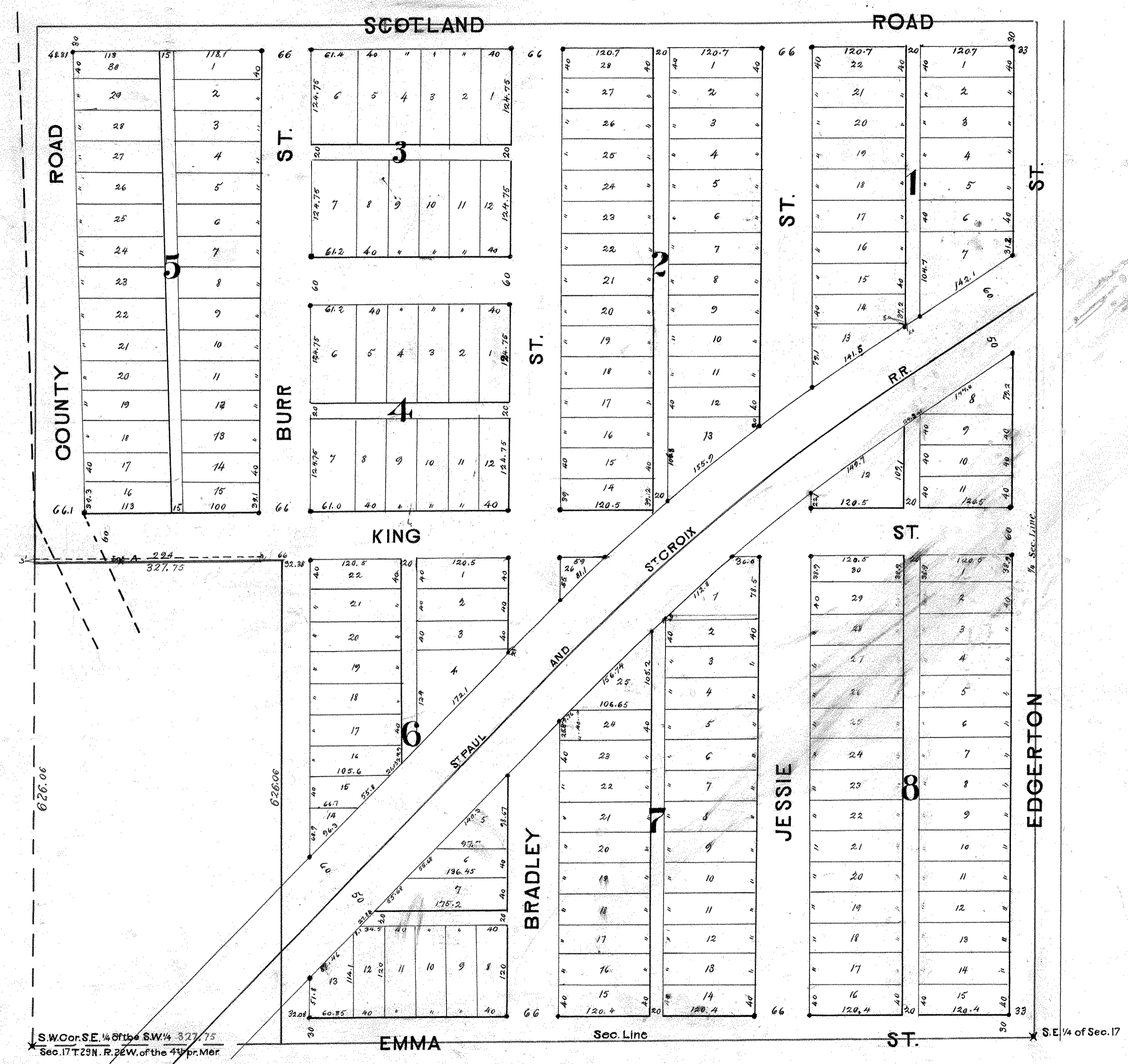
KING'S ADD. TO THE CITY OF ST PAUL

S.E. 1/4 of the S.W. 1/4 Sec. 17 T. 29 N. R. 22 W. of the 4th pr Mer

Etmer & Morrison Surveyors 1887

Scale 1"=100'

• Iron Monument.



S.W. Cor. SE. 1/4 of the SW. 1/4 Sec. 17 T. 29 N. R. 22 W. of the 4th pr Mer

S.E. 1/4 of Sec. 17