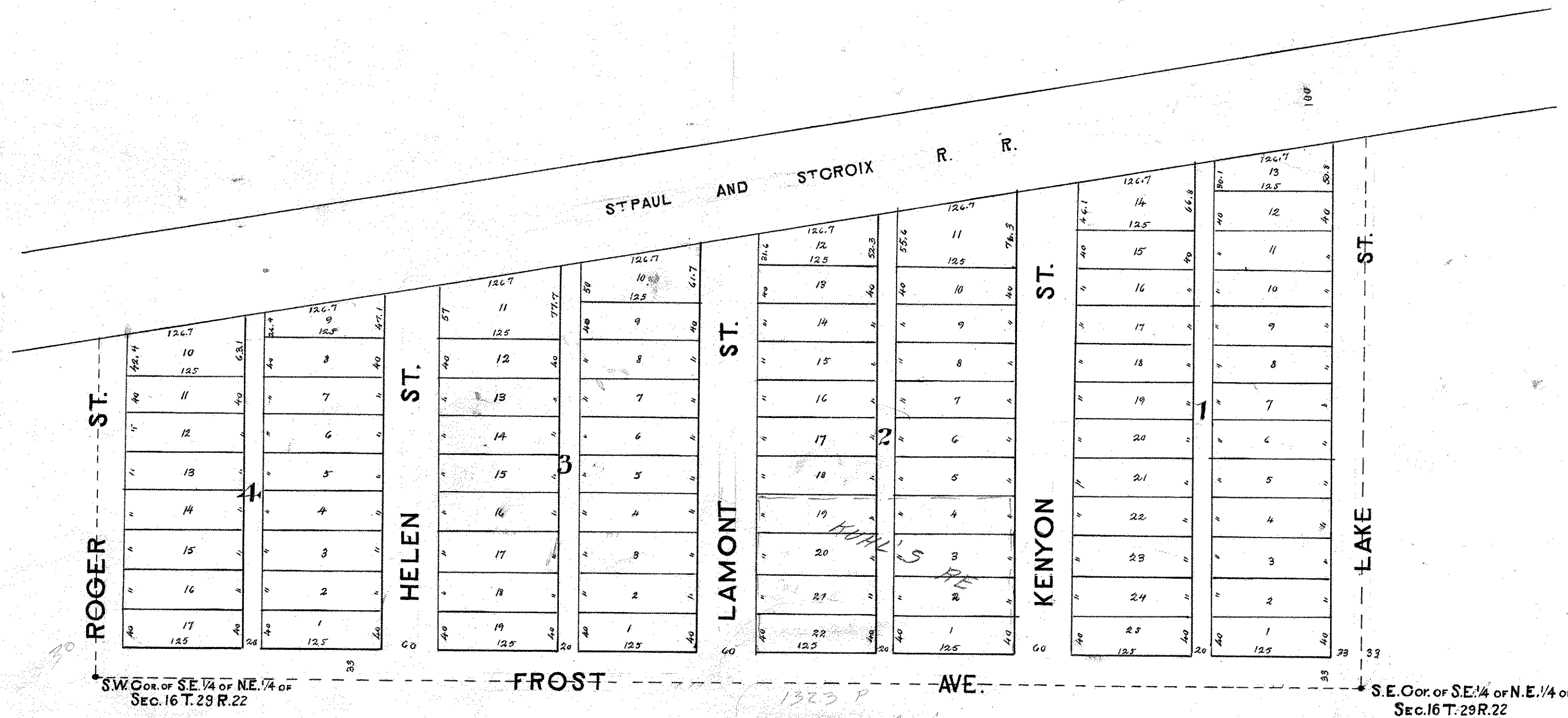


LINCOLN PARK

SCALE: 100 FT. = 1 INCH

Iron monuments at Block corners

Louis de W. Washburn Surveyor 1886



Description:-

That portion of the S.E. 1/4 of the N.E. 1/4 of Sec. 16 T. 29 R. 22 lying south of the Right of Way of the St. Paul and St. Croix R.R.