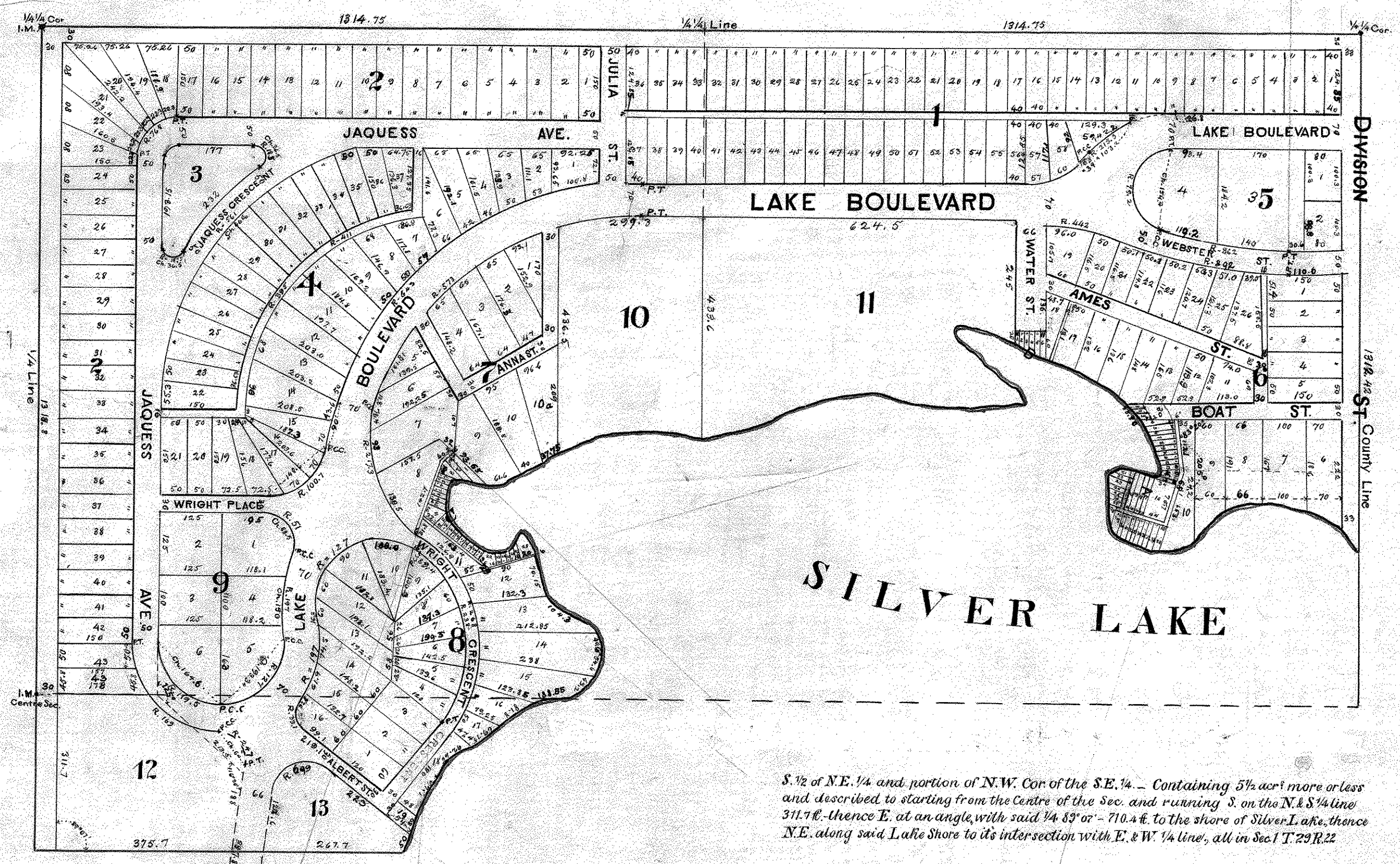


LAKESIDE PARK ADD.
TO
NORTH ST PAUL

Thomas F. Nicoll Surveyor 1887



S. 1/2 of N.E. 1/4 and portion of N.W. Cor. of the S.E. 1/4. - Containing 5 1/2 ac± more or less and described by starting from the Centre of the Sec. and running S. on the N. & S. 1/4 line 311.7 ft. thence E. at an angle with said 1/4 line of 83° or - 710.4 ft. to the shore of Silver Lake, thence N.E. along said Lake Shore to its intersection with E. & W. 1/4 line, all in Sec 1 T. 29 R. 22