

# PLAT OF LAKE VIEW PARK

RAMSEY CO. MINN.

50. FT. = 1 INCH

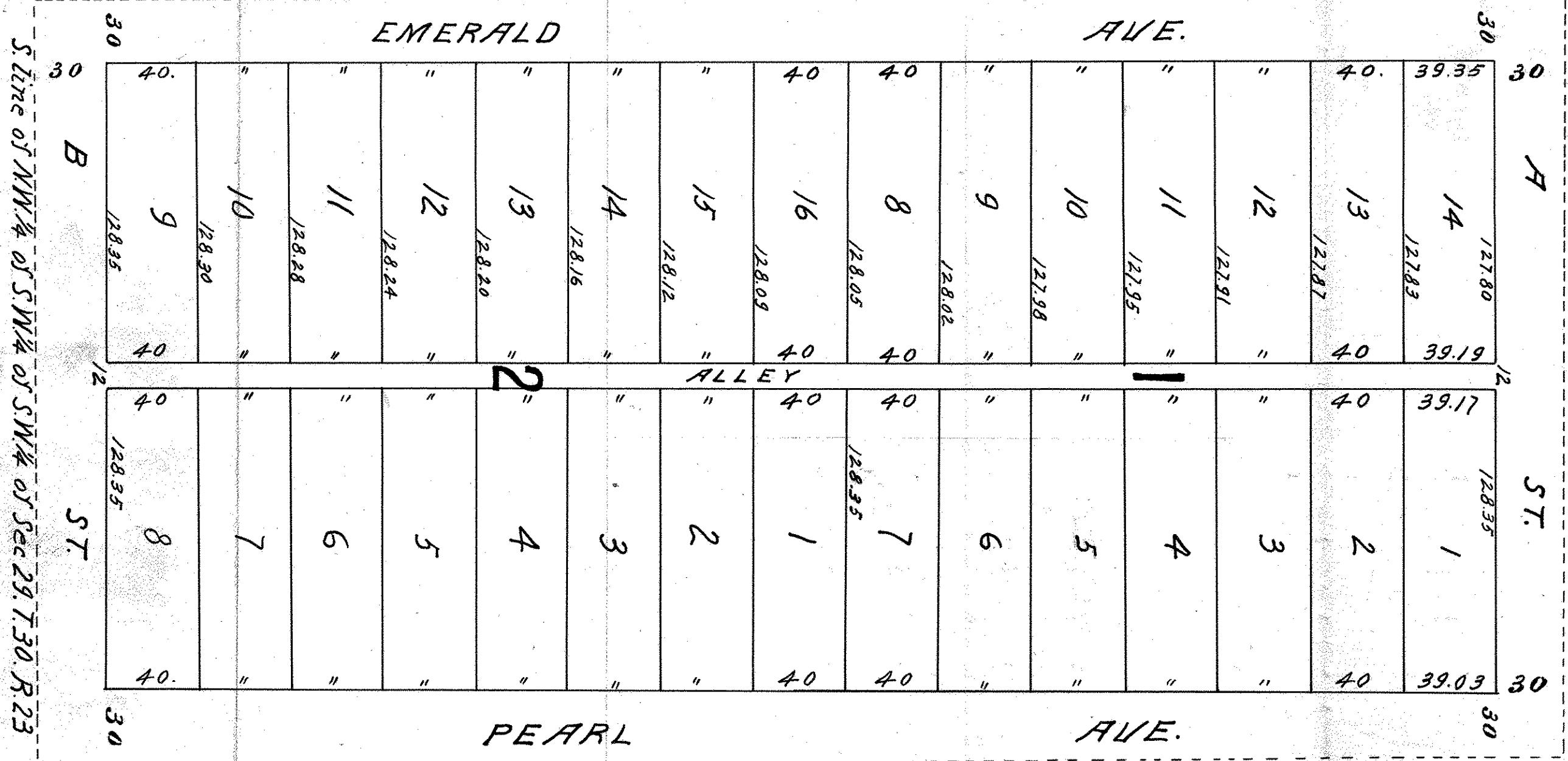
BOOK Y PAGE 8

LAKE VIEW PARK

W. line of E 1/2 of N.W. 1/4 of S.W. 1/4 of S.W. 1/4 of Sec. 29. T. 30. R. 23

E. 1/2 of N.W. 1/4 of S.W. 1/4 of S.W. 1/4 of Sec. 29. T. 30. R. 23

Des. East 1/2 of N.W. 1/4 of S.W. 1/4 of S.W. 1/4 of Sec. 29 - T. 30 - R. 23.



999

666