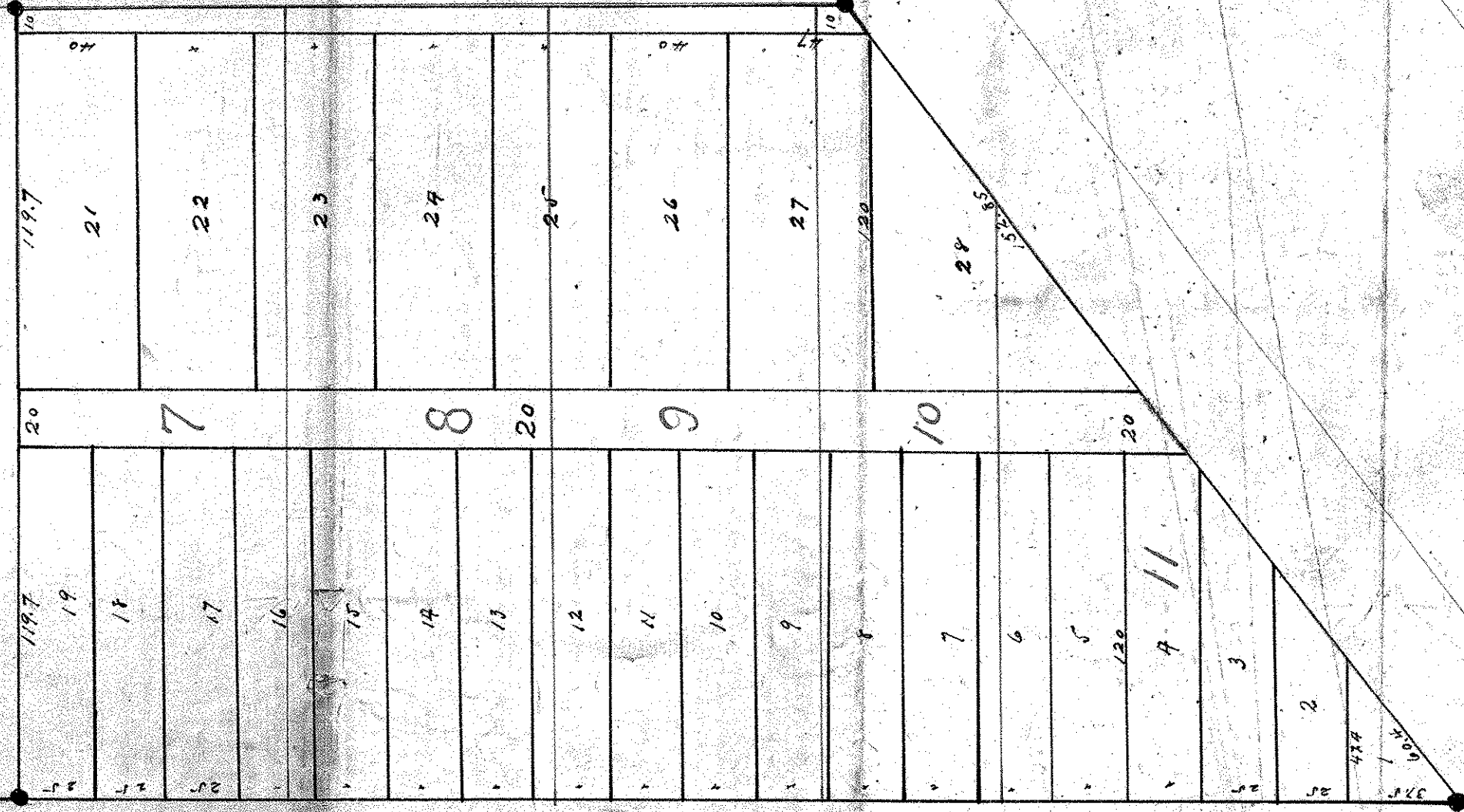


8-475
50 FT = 1 IN

NORTH ST PAUL LAND CO'S REAR. OF
LOTS 7-8-9-10-11 OF BLK 11 - N. ST PAUL PROPER

*North St Paul Land Co. Rear. of
lots 7-8-9-10-11 of blk 11 of
N. St Paul proper*

6 11



INDIANA ST

N. ST. P. LAND CO. RE

638
#1558

Handwritten notes and scribbles, including 'H' and 'S'.

111