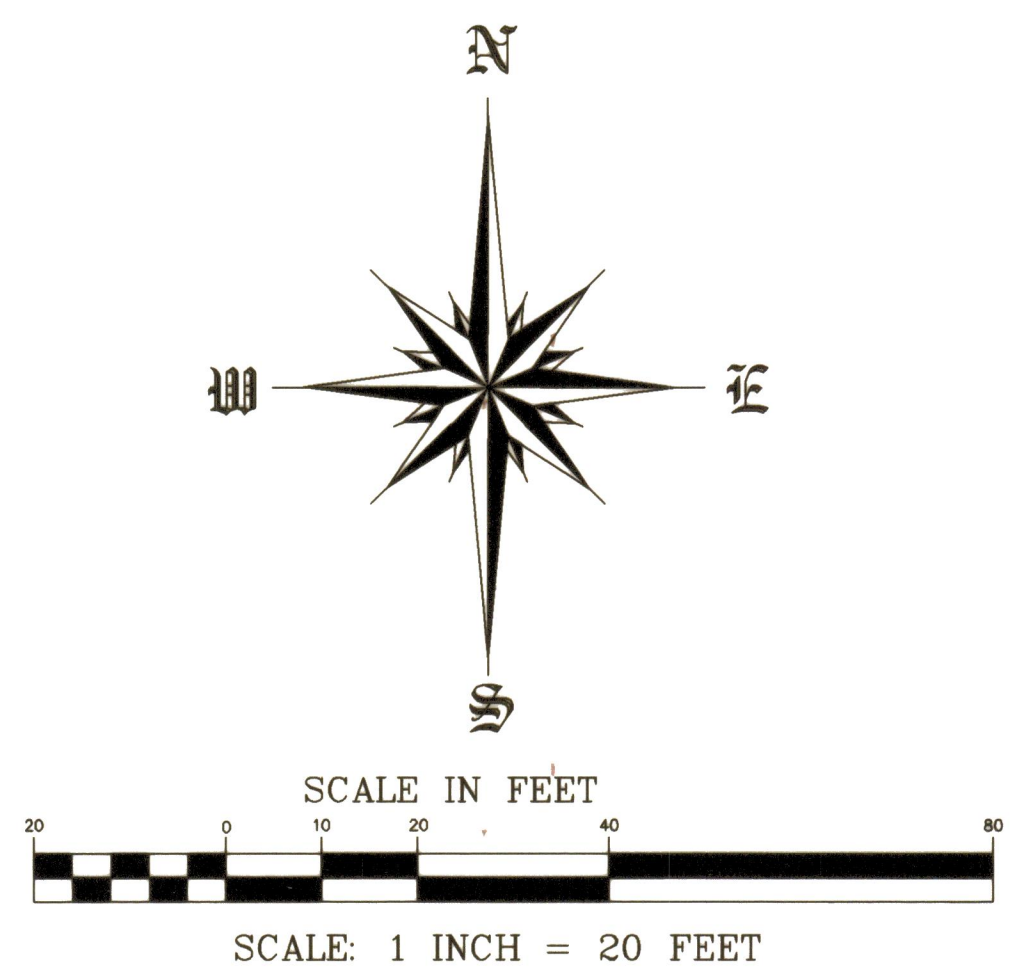
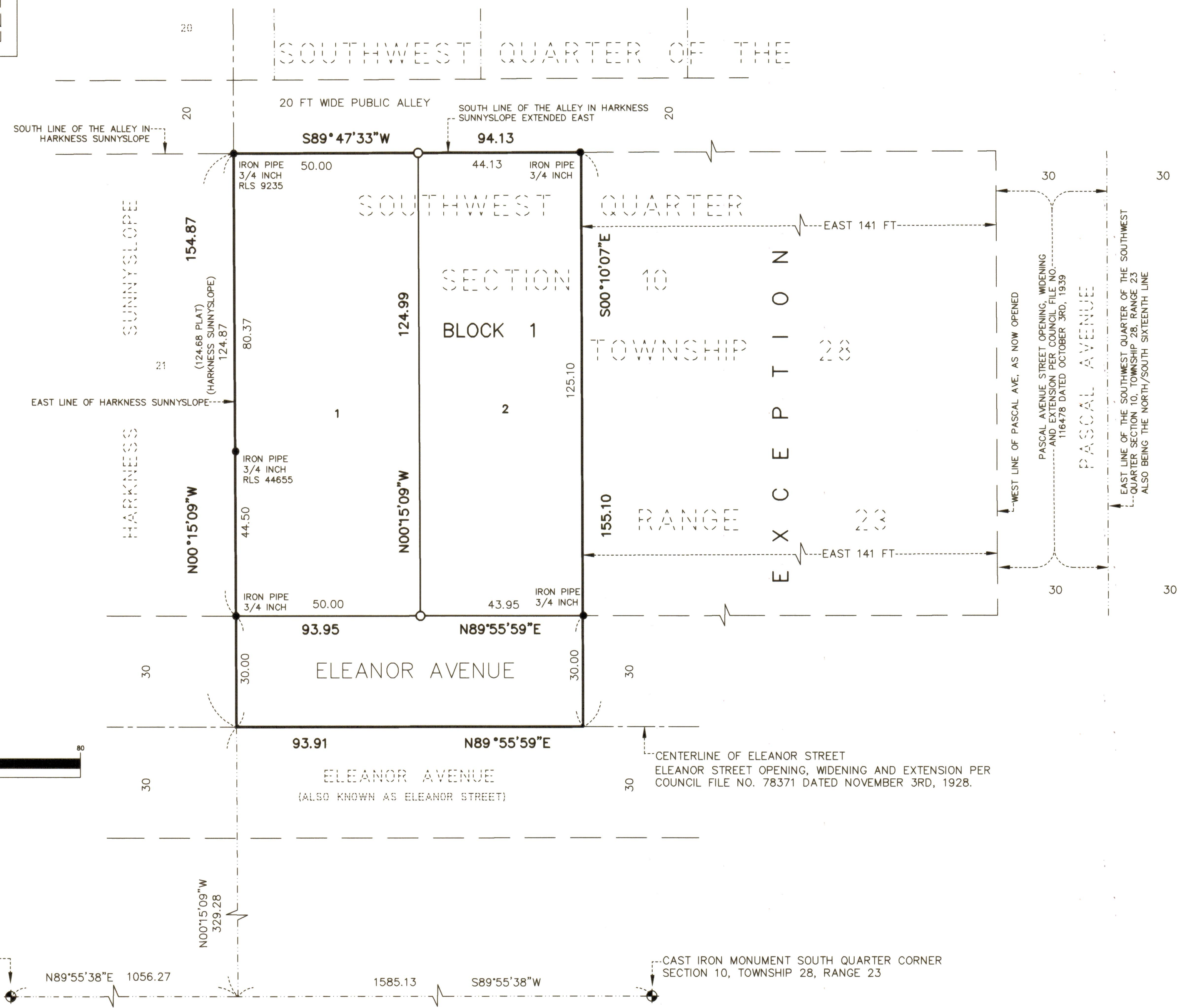
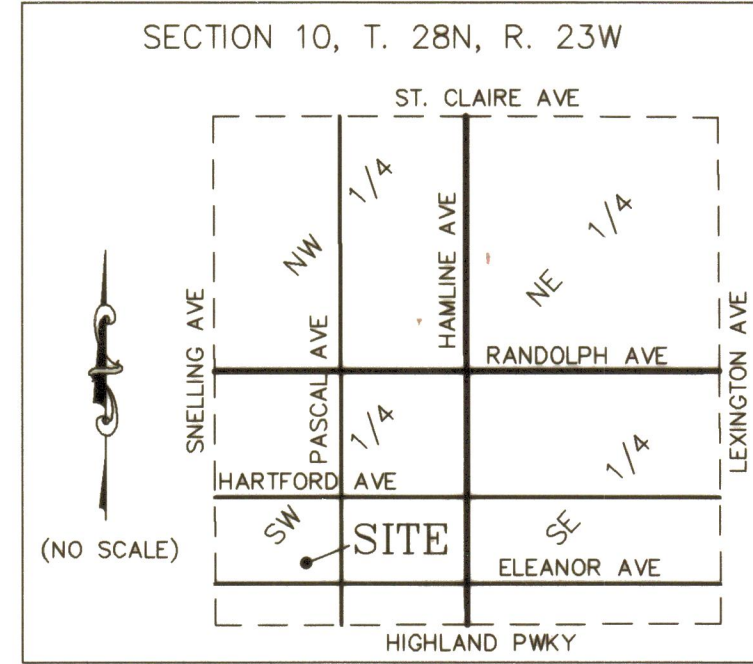


MICHELLE'S ADDITION

VICINITY MAP



LEGEND

- ◆ DENOTES GOVERNMENT CORNER FOUND, TYPE AS NOTED
 - DENOTES 14 INCH X 5/8 INCH REBAR MONUMENT SET AND CAPPED RLS 60424
 - DENOTES IRON MONUMENT FOUND, SIZE, TYPE, AND RLS AS NOTED
- BASIS OF BEARINGS: FOR THE PURPOSES OF THIS PLAT THE EAST LINE OF HARKNESS SUNNYSLOPE AN ASSUMED BEARING OF N00°15'09"W

LAKE & LAND SURVEYING, INC.
 1200 CENTRE POINTE CURVE, SUITE 375
 SAINT PAUL, MINNESOTA 55120
 PHONE: 651-776-6211

KNOW ALL MEN BY THESE PRESENTS: That Schumacher Holdings LLC, a Minnesota limited liability company, owner of the following described property situated in the City of Saint Paul, County of Ramsey, State of Minnesota:

All that part of the Southwest Quarter of the Southwest Quarter, Section 10, Township 28, Range 23, bounded on the East by Pascal Avenue, as now opened, 60 ft wide Right-of-Way, on the South by Eleanor Street, on the West by Harkness Sunnyslope and on the North by the South line of the alley in Harkness Sunnyslope extended East, excepting from the above the East 141 feet thereof, Ramsey County, Minnesota.

Has caused the same to be surveyed and platted as MICHELLE'S ADDITION and does hereby dedicate to the public for public use the public way as show on this plat.

In witness whereof said Schumacher Holdings, LLC, a Minnesota limited liability company, has caused these presents to be signed by its proper officer this 18th day of December, 2023.

Signed: Schumacher Holdings, LLC

Michelle Schumacher
 Chief Manager

STATE OF MINNESOTA

COUNTY OF Dakota

The foregoing instrument was acknowledged before me this 15th day of December, 2023, by Michelle Schumacher, Chief Manager of Schumacher Holdings, LLC, a Minnesota limited liability company on behalf of the company.

Genelle Forsberg
 Notary Public, Dakota County, Minnesota
 My Commission Expires 1/31/2025

I, Ryan M. Peterson, Professional Land Surveyor, do hereby certify that I have surveyed or directly supervised the survey of the property described on this plat; prepared this plat or directly supervised the preparation of this plat; that this plat is a correct representation of the boundary survey; that all mathematical data and labels are correctly designated on this plat; that all monuments depicted on this plat have been correctly set; that all water boundaries and wet lands, as defined in Minnesota Statutes, Section 505.01, Subd. 3, as of the date of the surveyor's certification are shown and labeled on this plat; and all public ways are shown and labeled on this plat.

Dated this 13th day of December, 2023.

Ryan M. Peterson
 Ryan M. Peterson, Professional Land Surveyor
 Minnesota License No. 60424

STATE OF MINNESOTA

COUNTY OF Dakota

The foregoing Surveyor's Certificate was acknowledged before me this 13th day of December, 2023, by Ryan M. Peterson, a Licensed Land Surveyor.

Genelle Forsberg
 Notary Public, Dakota County, Minnesota
 My Commission Expires 1/31/2025

City of Saint Paul

I do hereby certify that on the 13 day of September, 2023, the City Council of the

Shari Moor
 City Clerk

Property Tax, Records and Election Services Department

Pursuant to Minnesota Statutes, Section 505.021, Subd. 9, taxes payable in the year 202 on the land hereinbefore described have been paid. Also, pursuant to Minnesota Statutes, Section 272.12, there are no delinquent taxes and transfer entered this day of , 202 .

_____, Ramsey County Auditor/Treasurer

By _____ Deputy

County Surveyor

Pursuant to Minnesota Statutes, Section 383A.42, this plat is approved this 18th day of DECEMBER, 2023.

BY: *SLRB*
 STEPHANE J. ROBERT
 DEPUTY COUNTY SURVEYOR

DANIEL D. BAAR
 Daniel D. Baar, LS
 Ramsey County Surveyor

County Recorder, County of Ramsey, State of Minnesota

I hereby certify that this plat of MICHELLE'S ADDITION was filed in the office of the County Recorder for public record on this 18th day of December, 2023, at 11 o'clock A.M. and was duly filed in Book 130 of Plats, Page 26, as Document Number 5011780.

Deputy County Recorder