

# NEWMAN ESTATES

KNOW ALL PERSONS BY THESE PRESENTS: That Newco Homes, LLC., a Minnesota Limited Liability Company, owner of the following described property situated in the City of Vadnais Heights, County of Ramsey, State of Minnesota:

The East 333 feet of the South 165 feet of the Southeast Quarter of the Southwest Quarter of Section 29, Township 30, Range 22, Ramsey County, Minnesota.

Has caused the same to be surveyed and platted as NEWMAN ESTATES and does hereby dedicate to the public for public use forever the public way and the drainage and utility easements as shown on this plat.

In witness whereof said Newco Homes, LLC., a Minnesota Limited Liability Company, has caused these presents to be signed by its proper officer this 12<sup>th</sup> day of DECEMBER, 2022.

Signed: Newco Homes, LLC.  
*Nathan Newman*  
Nathan Newman, President

STATE OF MINNESOTA  
COUNTY OF Anoka

The foregoing instrument was acknowledged before me this 12<sup>th</sup> day of December, 2022, by Nathan Newman, President of Newco Homes, LLC., a Minnesota Limited Liability Company, on behalf of the company.

Joan C. Mizer  
Joan C. Mizer  
(Print Notary's name)

Notary Public, Pine County, Minnesota

My Commission expires Jan. 31, 2026

I, Lyle C. Reynolds, Licensed Land Surveyor, do hereby certify that I have surveyed or directly supervised the survey of the property described on this plat; prepared this plat or directly supervised the preparation of this plat; that this plat is a correct representation of the boundary survey; that all mathematical data and labels are correctly designated on this plat; that all monuments depicted on this plat have been correctly set; that all water boundaries and wet lands, as defined in Minnesota Statutes, Section 505.01, Subd. 3, as of the date of the surveyor's certification are shown and labeled on this plat; and all public ways are shown and labeled on this plat.

Dated this 12<sup>th</sup> day of December, 2022.

*Lyle C. Reynolds*  
Lyle C. Reynolds, Land Surveyor  
Minnesota License No. 13072

STATE OF MINNESOTA  
COUNTY OF Anoka

The foregoing Surveyor's Certificate was acknowledged before me this 12<sup>th</sup> day of December, 2022, by Lyle C. Reynolds, a Licensed Land Surveyor.

Joan C. Mizer  
Joan C. Mizer

Notary Public, Pine County, Minnesota

My Commission expires Jan. 31, 2026

City of Vadnais Heights

We do hereby certify that on the 1<sup>st</sup> day of November, 2022, the City Council of the City of Vadnais Heights, Minnesota, approved this plat.

*[Signature]* Mayor *[Signature]* City Clerk

Property Tax, Records and Election Services Department

Pursuant to Minnesota Statutes, Section 505.021, Subd. 9, taxes payable in the year 2022 on the land hereinbefore described have been paid. Also, pursuant to Minnesota Statutes, Section 272.12, there are no delinquent taxes and transfer entered this 16<sup>th</sup> day of December, 2022.

Heather L. Bestler, Ramsey County Auditor/Treasurer

By \_\_\_\_\_ Deputy

County Surveyor

Pursuant to Minnesota Statutes, Section 383A.42, this plat is approved this 16<sup>th</sup> day of DECEMBER, 2022.

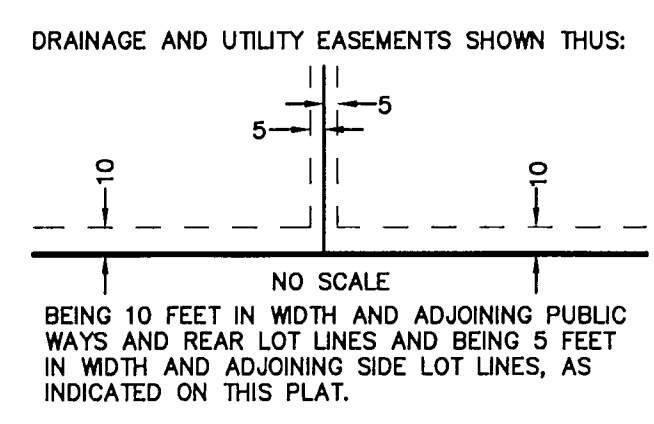
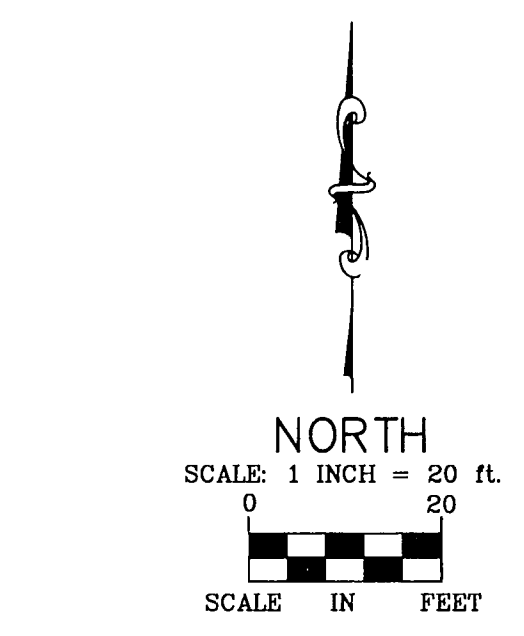
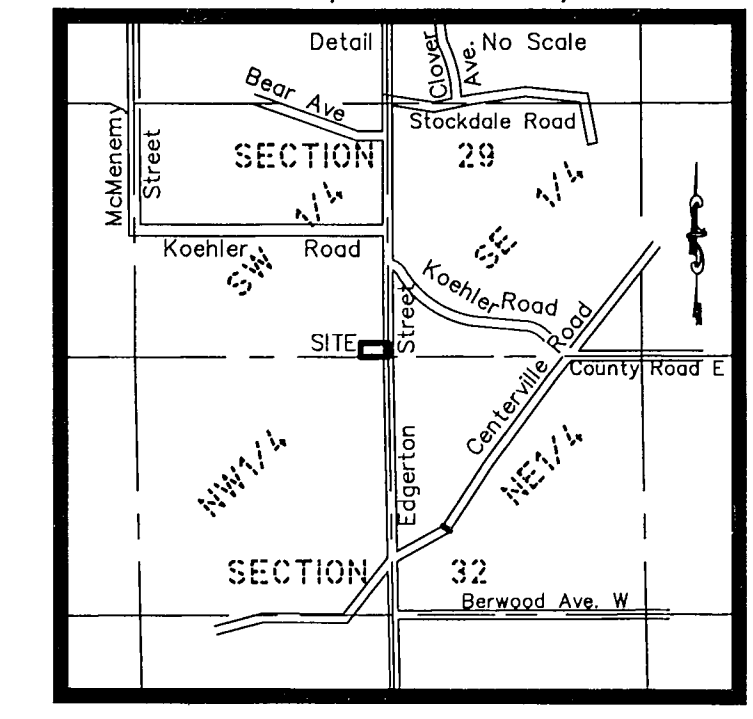
DANIEL D. BAAR DT: STEPHANE J. ROBERT  
Daniel D. Baar, L.S. Stephane J. Robert  
Ramsey County Surveyor Deputy County Surveyor

County Recorder, County of Ramsey, State of Minnesota

I hereby certify that this plat of NEWMAN ESTATES was filed in the office of the County Recorder for public record on this 16<sup>th</sup> day of December, 2022, at 11 o'clock A.M. and was duly filed in Book 130 of Plats, Page 14, as Document Number 4975515.

Deputy County Recorder

### VICINITY MAP



- Denotes 1/2 inch by 14 inch iron rebar set and marked by License No. 13072.
- Denotes found monument as specified
- ⊕ Denotes Ramsey County Cast Iron Monument, unless otherwise noted.

The orientation of this bearing system is based on the south line of the SE1/4 of the SW1/4, Sec. 29, T. 30, R. 22, which is assumed to bear S89°48'24"E

Found Cast Iron Monument at the NE Corner of the SE1/4 of the SW1/4 of Section 29, T. 30N., R. 22W.

