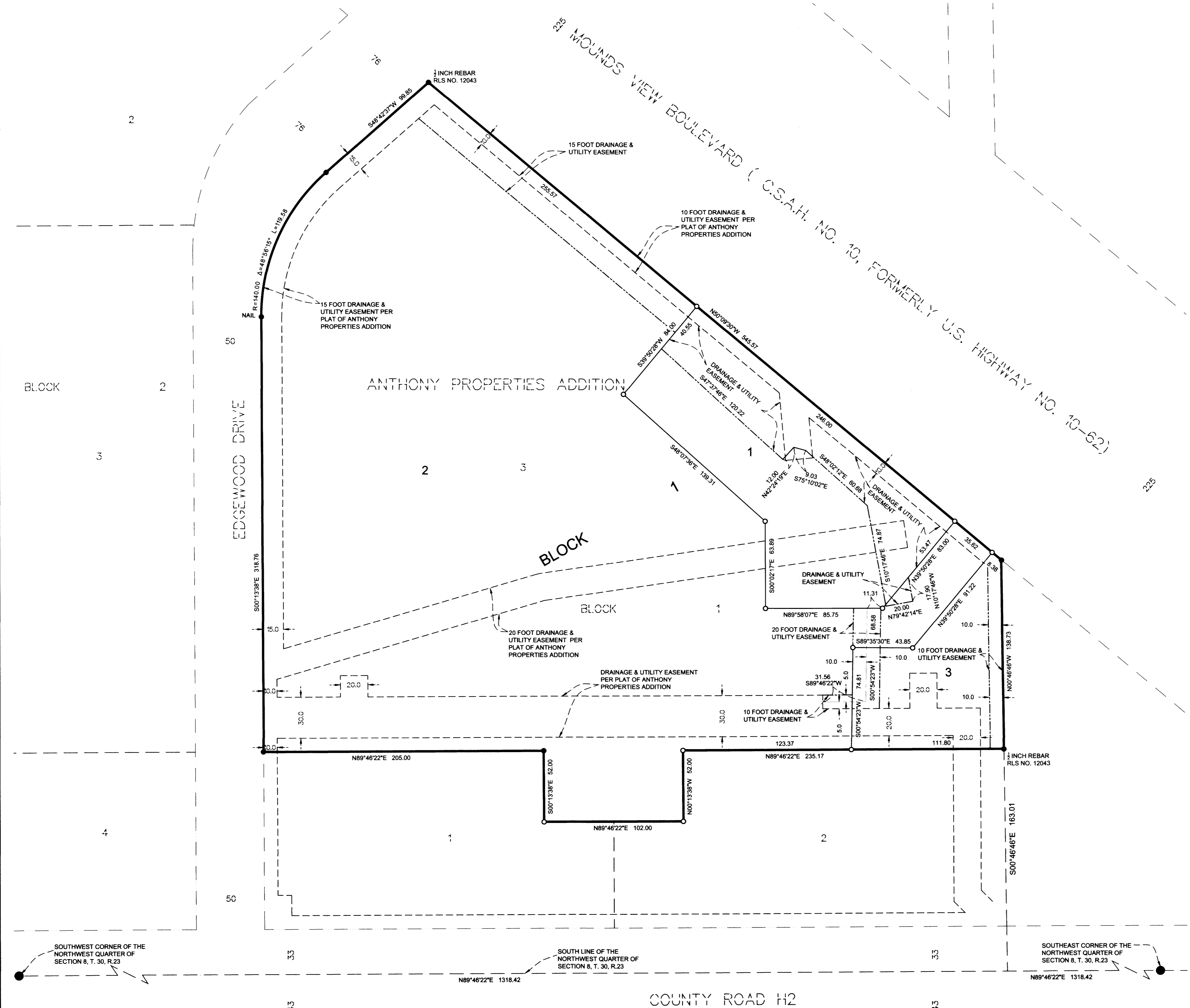


ANTHONY PROPERTIES SECOND ADDITION



KNOW ALL PERSONS BY THESE PRESENTS: That AP Mounds View Limited Partnership, a Texas limited partnership, owner of the following described property situated in the City of Mounds View, County of Ramsey, State of Minnesota:

Lot 3, Block 1, ANTHONY PROPERTIES ADDITION, Ramsey County, Minnesota.

Has caused the same to be surveyed and platted as ANTHONY PROPERTIES SECOND ADDITION and does hereby dedicate to the public for public use the drainage and utility easements as shown on this plat.

In witness whereof said AP Mounds View Limited Partnership, a Texas limited partnership, has caused these presents to be signed by its proper partner this 13th day of September, 2021.

Signed: AP Mounds View Limited Partnership, a Texas limited partnership
By: Resa Gilmore, Its General Partner

STATE OF TX
COUNTY OF DALLAS

The foregoing instrument was acknowledged before me on this 13 day of September, 2021 by Resa Gilmore, Vice President of Anthony Properties Management, Inc., a Texas corporation, General Partner of AP Mounds View Limited Partnership, a Texas limited partnership, on behalf of the partnership.

Resa Gilmore (Signature)
Resa Gilmore, Vice President

l. wy (Signature)
Chudney Vessey (Print)
Notary Public: TX
My commission expires Jan 13 2024

I, Jonathan D. Schuette, Licensed Land Surveyor, do hereby certify that I have surveyed or directly supervised the survey of the property described on this plat, prepared this plat or directly supervised the preparation of this plat, that this plat is a correct representation of the boundary survey; that all mathematical data and labels are correctly designated on this plat, that all monuments depicted on this plat have been correctly set, that all water boundaries and wet lands, as defined in Minnesota Statutes, Section 505.01, Subd. 3, as of the date of this certificate are shown and labeled on this plat, and all public ways are shown and labeled on this plat.

Dated this 9 day of September, 2021.

Jonathan D. Schuette (Signature)
Jonathan D. Schuette, Licensed Land Surveyor
Minnesota License No. 45352

STATE OF MINNESOTA
COUNTY OF Douglas

The foregoing Surveyor's Certificate was acknowledged before me this 9 day of September, 2021 by Jonathan D. Schuette, a Licensed Land Surveyor.

Jonathan D. Schuette (Signature)
See Christine Beattie (Print)
Notary Public: MN
My commission expires 1-31-2025

CITY OF MOUNDS VIEW
We do hereby certify that on the 23 day of August, 2021, the City Council of the City of Mounds View, Minnesota, approved this plat. Also, the conditions of Minnesota Statutes, Section 505.03, Subd. 2 have been fulfilled.

Jonathan D. Schuette (Signature)
Mayor
Christine Beattie (Signature)
Clerk

PROPERTY TAX, RECORDS AND ELECTION SERVICES DEPARTMENT

Pursuant to Minnesota Statutes, Section 505.021, Subd. 9, taxes payable in the year _____ on the land hereinbefore described have been paid. Also, pursuant to Minnesota Statutes, Section 272.12, there are no delinquent taxes and transfer entered this _____ day of _____, 20____.

Heather L. Bestler, Ramsey County Auditor/Treasurer

By: _____, Deputy

COUNTY SURVEYOR

Pursuant to Minnesota Statutes, Section 383A.42, this plat is approved this 7th day of OCTOBER, 2021.

Daniel D. Baar (Signature)
Daniel D. Baar, L.S.,
Ramsey County Surveyor

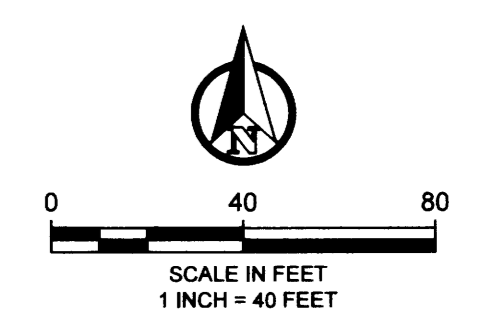
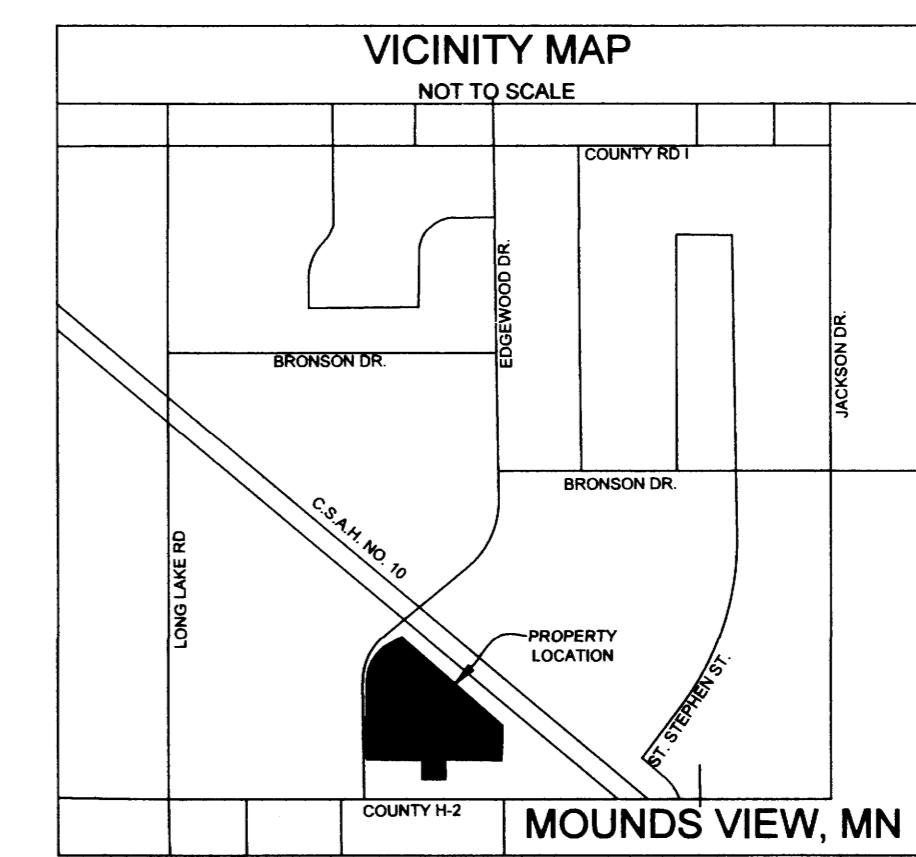
BY: Stephane J. Robert (Signature)
STEPHANE J. ROBERT
DEPUTY COUNTY SURVEYOR

COUNTY RECORDER, RAMSEY COUNTY, MINNESOTA

I hereby certify that this plat of ANTHONY PROPERTIES SECOND ADDITION was filed in the office of the County Recorder for the public record on this 03rd day of October, 2021, at 1:00 o'clock P.M., and was duly filed in Book 129 of Plats, Page 46 as Document Number 4913107.

Deputy County Recorder

ORIENTATION OF THIS BEARING SYSTEM IS BASED ON THE SOUTH LINE OF THE NORTHWEST QUARTER OF SECTION 8, TOWNSHIP 30, RANGE 23, HAVING AN ASSUMED BEARING OF NORTH 89°46'22" EAST



- = DENOTES RAMSEY COUNTY CAST IRON MONUMENT
- = DENOTES FOUND 1/2 INCH REBAR MONUMENT UNLESS OTHERWISE SHOWN
- = DENOTES 1/2 INCH DIAMETER BY 18 INCH LONG IRON PIPE MONUMENT SET AND MARKED RLS# 45352