

HIGHLAND BRIDGE ROWHOMES

KNOW ALL PERSONS BY THESE PRESENTS: That Pulte Homes of Minnesota, LLC, a Minnesota limited liability company, owner of the following described property situated in the City of Saint Paul, County of Ramsey, State of Minnesota:

Lot 2, Block 8; Lot 1, Block 10; Lot 2, Block 14; and Lot 1, Block 15, FORD, Ramsey County, Minnesota

Has caused the same to be surveyed and platted as HIGHLAND BRIDGE ROWHOMES and does hereby dedicate to the public for public use the perpetual easements for municipal utility and water services as shown on this plat.

In witness whereof said Pulte Homes of Minnesota, LLC, a Minnesota limited liability company, has caused these presents to be signed by its proper officer this 8 day of DECEMBER, 2020.

Signed: Pulte Homes of Minnesota, LLC
[Signature], Chief Manager

STATE OF MINNESOTA
COUNTY OF HENNEPIN

The foregoing instrument was acknowledged before me this 8 day of DECEMBER, 2020, by Jamie Tharp, Chief Manager of Pulte Homes of Minnesota, LLC, a Minnesota limited liability company, on behalf of the company.

[Signature]
Signature
JENNIFER MULLWID-HEARMANN
Printed Name
Notary Public, DAKOTA County, Minnesota
My Commission Expires JAN 31, 2021

SURVEYOR'S CERTIFICATE

I, Peter D. Goers, Licensed Land Surveyor, do hereby certify that I have surveyed or directly supervised the survey of the property described on this plat; prepared this plat or directly supervised the preparation of this plat; that this plat is a correct representation of the boundary survey; that all mathematical data and labels are correctly designated on this plat; that all monuments depicted on this plat have been correctly set; that all water boundaries and wet lands, as defined in Minnesota Statutes, Section 505.01, Subd. 3, as of the date of the surveyor's certification are shown and labeled on this plat; and all public ways are shown and labeled on this plat.

Dated this 7TH day of DECEMBER, 2020.

[Signature]
Peter D. Goers, Licensed Land Surveyor
Minnesota License No. 44110

STATE OF MINNESOTA
COUNTY OF HENNEPIN

The foregoing Surveyor's Certificate was acknowledged before me this 7th day of December, 2020, by Peter D. Goers, Licensed Land Surveyor.

[Signature]
Signature
Daniel P. Ekrem
Printed Name
Notary Public, Dakota County, Minnesota
My Commission Expires January 31, 2024

CITY COUNCIL
CITY OF SAINT PAUL

I do hereby certify that on the 4 day of November, 2020 the City Council of the City of Saint Paul, Minnesota, approved this plat.

[Signature]
City Clerk

PROPERTY TAX, RECORDS AND ELECTION SERVICES DEPARTMENT

Pursuant to Minnesota Statutes, Section 505.021, Subd. 9, taxes payable in the year 2020 on the land hereinbefore described have been paid. Also, pursuant to Minnesota Statutes, Section 272.12, there are no delinquent taxes and transfer entered this 11th day of DECEMBER, 2020.

Christopher A. Samuel, Ramsey County Auditor/Treasurer

By _____, Deputy

COUNTY SURVEYOR

Pursuant to Minnesota Statutes, Section 383A.42, this plat is approved this 11th day of DECEMBER, 2020.

DANIEL D. BAAR
Daniel D. Baar, L.S.
Ramsey County Surveyor

BY: [Signature]
STEPHANE J. ROBERT
DEPUTY COUNTY SURVEYOR

REGISTRAR OF TITLES

Registrar of Titles, County of Ramsey, State of Minnesota

I hereby certify that this plat of HIGHLAND BRIDGE ROWHOMES was filed in the office of the Registrar of Titles for public record on this 11th day of DECEMBER, 2020 at 3:15 o'clock P.M. and was duly filed in Book 52 of Plats, Pages 41 and 42 as Document Number 2689377.

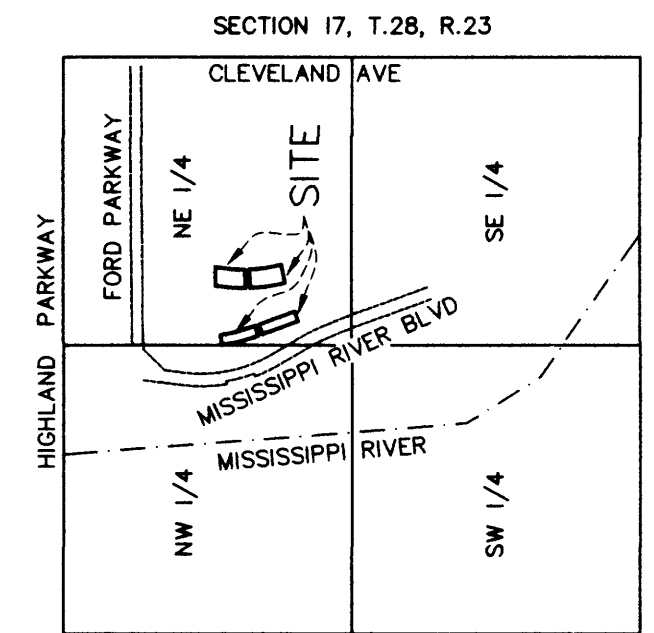
Deputy Registrar of Titles



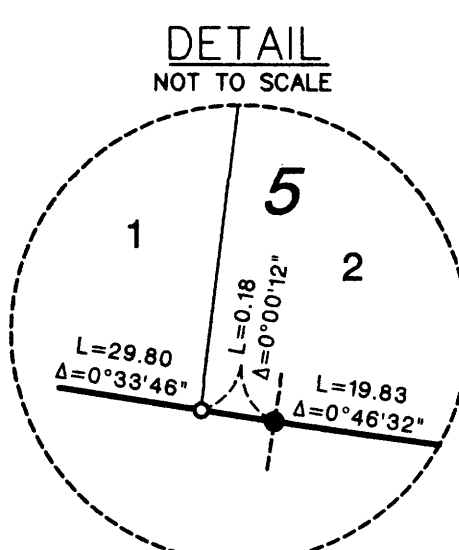
HIGHLAND BRIDGE ROWHOMES

EAST 1/4 CORNER OF SEC. 17, T. 28, R. 23

VICINITY MAP



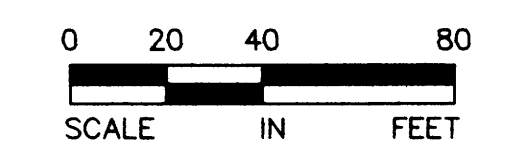
NOT TO SCALE



DETAIL NOT TO SCALE

THE SOUTH LINE OF BLOCK 8, FORD, IS ASSUMED TO HAVE A BEARING OF N74°24'28"E.

- Denotes 1/2 inch x 14 inch iron rebar found marked by license no. 45873
- Denotes 1/2 inch x 18 inch iron pipe set marked by license no. 44110
- ⊙ Denotes found Cast Iron Monument



SCALE: ONE INCH EQUALS FORTY FEET

