

OWASSO GARDENS

KNOW ALL PERSONS BY THESE PRESENTS: That CB OWASSO GARDENS Limited Partnership, owner of the following described property situated in the City of Roseville, County of Ramsey, State of Minnesota:

- Lot 20, Woodlynn Park, except the Westerly 115 feet thereof,
- And:
- The Westerly 115 feet of Lot 20, Woodlynn Park,
- And:
- Lot 19, Woodlynn Park,
- And:
- Lot 18, Woodlynn Park,

Has caused the same to be surveyed and platted as OWASSO GARDENS, and does hereby dedicate to the public for public use forever the public way and the drainage and utility easements as created by this plat.

In witness whereof said CB OWASSO GARDENS Limited Partnership, has caused these presents to be signed by its proper officer this 24 day of SEPTEMBER, 2020.

SIGNED: CB Owasso Gardens Limited Partnership

By: [Signature] its Chief Mgr./President

STATE OF MINNESOTA
COUNTY OF RAMSEY

The foregoing instrument was acknowledged before me this 24th day of September, 2020, by Cecile Bede, the Chief Mgr./President of CB Owasso Gardens GP LLC, a Minnesota limited liability company, the General Partner of CB Owasso Gardens Limited Partnership, a Minnesota limited partnership, on behalf of said partnership.

[Signature]
Signature

Melinda Studer
Printed

Notary Public Hennepin County, Minnesota

My commission expires January 31, 2024

I, Christopher A. Terwedo, Licensed Land Surveyor, do hereby certify that I have surveyed or directly supervised the survey of the property described on this plat; prepared this plat or directly supervised the preparation of this plat; that this plat is a correct representation of the boundary survey, that all mathematical data and labels are correctly designated on this plat; that all monuments depicted on this plat have been correctly set; that all water boundaries and wet lands, as defined in Minnesota Statutes, Section 505.01, Subd. 3, as of the date of the surveyor's certificate are shown and labeled on this plat; and all public ways are shown and labeled on this plat.

Dated this 24th day of SEPTEMBER, 2020.

[Signature]
Christopher A. Terwedo, Land Surveyor
Minnesota License No. 53536

STATE OF MINNESOTA
COUNTY OF RAMSEY

The foregoing Surveyor's Certificate was acknowledged before me this 24th day of SEPTEMBER, 2020, by Christopher A. Terwedo, Land Surveyor, Minnesota License No. 53536.

[Signature]
Signature

NICHOLAS C. PERKINS
Printed

Notary Public RAMSEY County, MINNESOTA

My commission expires JANUARY 31, 2021

CITY COUNCIL
City of Roseville, Minnesota

We do hereby certify that on the 24th day of SEPTEMBER, 2020, the City Council of the City of Roseville, Minnesota, approved this plat. Also, the conditions of Minnesota Statutes, Section 505.03, Subd. 2, have been fulfilled.

[Signature] Clerk [Signature] Mayor

PROPERTY TAX, RECORDS AND ELECTION SERVICES DEPARTMENT

Pursuant to Minnesota Statutes, Section 505.021, Subd. 9, taxes payable in the year 2020 on the land hereinbefore described have been paid. Also pursuant to Minnesota Statutes, Section 272.12, there are no delinquent taxes and transfer entered this 30th day of SEPTEMBER, 2020.

Christopher A. Samuel, Ramsey County Auditor/Treasurer

by _____ Deputy

COUNTY SURVEYOR

Pursuant to Minnesota Statutes, Section 383A.42, this plat is approved this 24th day of SEPTEMBER, 2020.

DANIEL D. BAAR
Daniel D. Baar, L.S.
County Surveyor

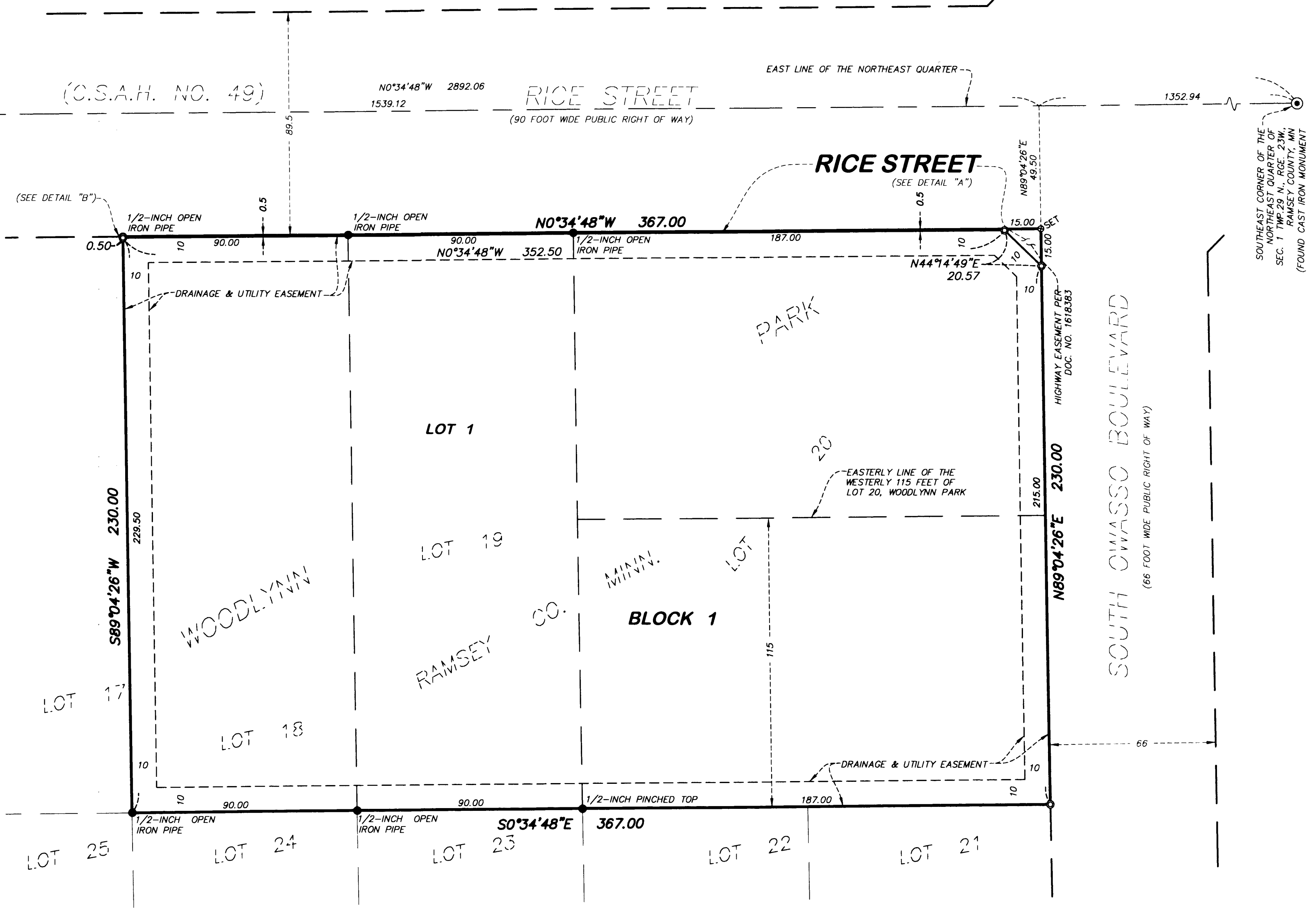
By: [Signature]
STEPHANNE J. ROBERT
DEPUTY COUNTY SURVEYOR

REGISTRAR OF TITLES, COUNTY OF RAMSEY, STATE OF MINNESOTA

I hereby certify that this plat of OWASSO GARDENS was filed in the office of the Registrar of Titles for public record on this 30th day of SEPTEMBER, 2020, at 9:00 o'clock A.M. and was duly filed in Book 52 of Plats, Page 38 as Document Number 2677501

Deputy Registrar of Titles

NORTHEAST CORNER OF THE NORTHEAST QUARTER OF SEC. 1, TWP. 29 N., RGE. 23 W., RAMSEY COUNTY, MN (FOUND CAST IRON MONUMENT)



- FOUND CAST IRON MONUMENT
- FOUND IRON MONUMENT, AS NOTED
- SET 5/8-INCH X 14-INCH REBAR WITH CAP MARKED "L.S. 53536"
- SET PK NAIL WITH DISK MARKED "L.S. 53536"

