

KNOW ALL MEN BY THESE PRESENTS: That Shade Tree Construction, Inc., a Minnesota Corporation, fee owner and Excelsior Capitol Sub V, LLC, a Minnesota limited liability company, mortgagee of the following described property situated in the City of Roseville, County of Ramsey, State of Minnesota:

The North 108.90 feet of the South 258.90 feet of the West 290.40 feet of the North Half of the Northwest Quarter of the Northeast Quarter of Section 10, Township 29 North, Range 23 West, Ramsey County, Minnesota.

Have caused the same to be surveyed and platted as SHADE TREE CORNER and do hereby dedicate to the public for public use forever the public way and drainage and utility easements as shown on this plat.

In witness whereof said Shade Tree Construction, Inc., a Minnesota Corporation, has caused these presents to be signed by its proper officer this 11 day of MAY, 2020.

SIGNED: SHADE TREE CONSTRUCTION, INC.,

Mark L. Strandlund, President

STATE OF MINNESOTA
COUNTY OF ANCKER

The foregoing instrument was acknowledged before me this 11 day of MAY, 2020 by Mark L. Strandlund, as President of Shade Tree Construction, Inc., a Minnesota Corporation, on behalf of the corporation.

Notary Public, Ancker County, Minnesota
My Commission Expires 11/11/25

In witness whereof said Excelsior Capitol Sub V, LLC, a Minnesota limited liability company, has caused these presents to be signed by its proper officer this 11 day of MAY, 2020.

SIGNED: EXCELSIOR CAPITOL SUB V, LLC,

Excelsior Capitol Sub V, LLC, its VP

STATE OF MINNESOTA
COUNTY OF ANCKER

The foregoing instrument was acknowledged before me this 11 day of MAY, 2020, by Tony Scher, as Vice President of Excelsior Capitol Sub V, LLC, a Minnesota limited liability company, on behalf of the company.

Notary Public, Ancker County, Minnesota
My Commission Expires 01/31/21

I, James E. Napier, Licensed Land Surveyor, do hereby certify that I have surveyed or directly supervised the survey of the property described on this plat; prepared this plat or directly supervised the preparation of this plat; that this plat is a correct representation of the boundary survey; that all mathematical data and labels are correctly designated on this plat; that all monuments depicted on this plat have been correctly set or will be correctly set within one year of recording this plat; that all water boundaries and wet lands, as defined in Minnesota Statutes, Section 505.01, Subd. 3, as of the date of the surveyor's certification are shown and labeled on this plat; and all public ways are shown and labeled on this plat.

Dated this 16 day of March, 2020.

James E. Napier, Land Surveyor
Minnesota License No. 25343

STATE OF MINNESOTA
COUNTY OF ANCKER

The foregoing Surveyor's Certificate was acknowledged before me this 16 day of March, 2020, by James E. Napier, a Licensed Land Surveyor.

Notary Public, Ancker County, Minnesota
My Commission Expires January 31, 2025

CITY OF ROSEVILLE
We do hereby certify that on the 20 day of May, 2020, the City Council of the City of Roseville, Minnesota, approved this plat. Also, the conditions of Minnesota Statutes, Section 505.03, Subd. 2, have been fulfilled.

Mayor, City Clerk

PROPERTY TAX, RECORDS AND ELECTION SERVICES DEPARTMENT
Pursuant to Minnesota Statutes, Section 505.021, Subd. 9, taxes payable in the year 2020 on the land hereinbefore described have been paid. Also, pursuant to Minnesota Statutes, Section 272.12, there are no delinquent taxes and transfer entered this 18 day of September, 2020.

Christopher A. Samuel, Ramsey County Auditor/Treasurer

By, Deputy

COUNTY SURVEYOR
Pursuant to Minnesota Statutes, Section 383A.42, this plat is approved this 22 day of MAY, 2020.

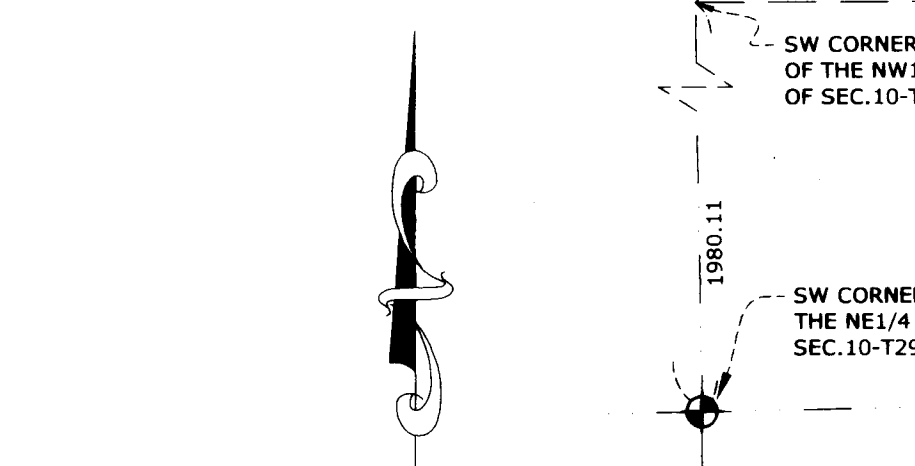
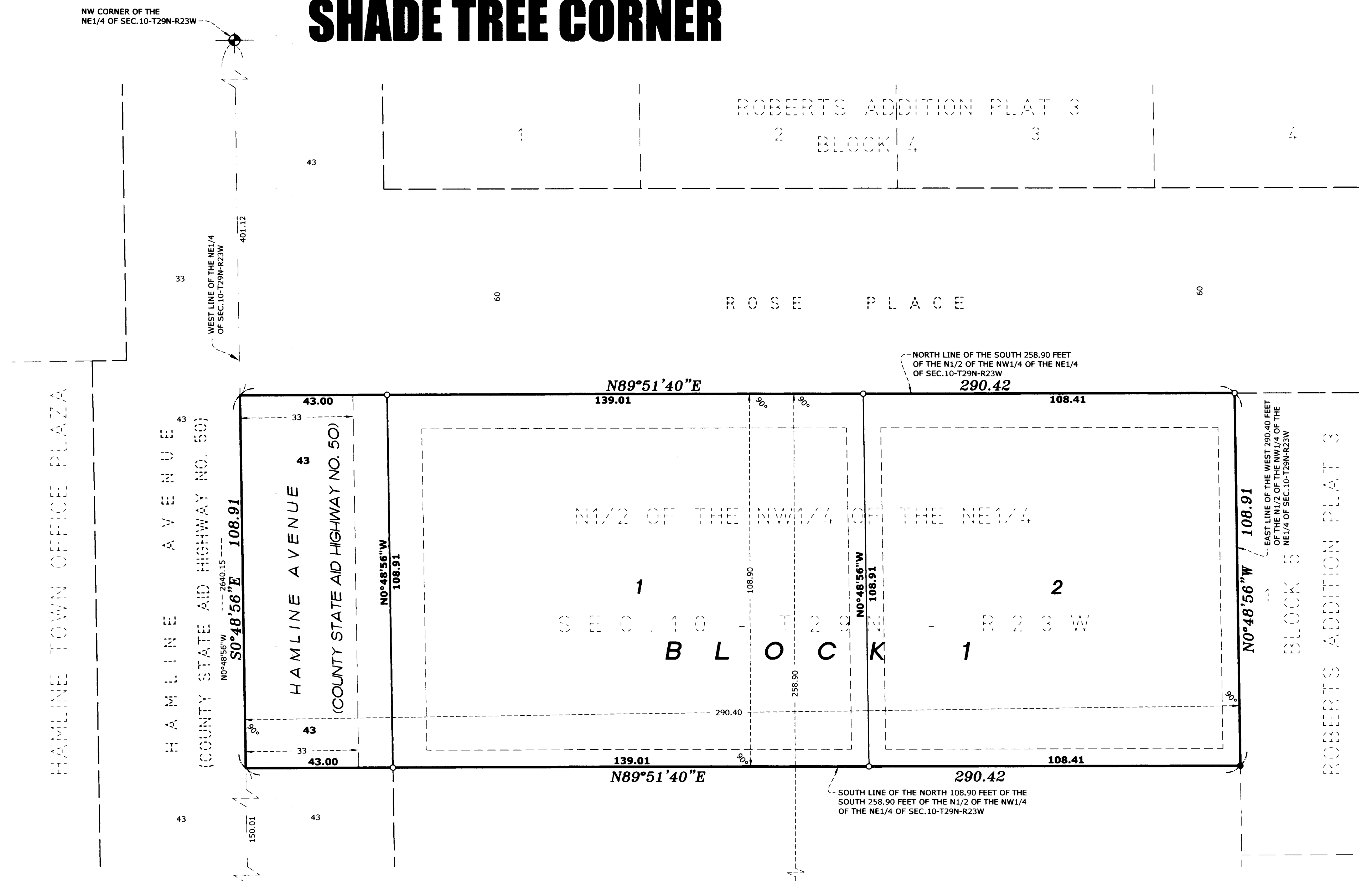
Daniel D. Baar, L.S.
Ramsey County Surveyor

BY: STEPHANE J. ROBERT
DEPUTY COUNTY SURVEYOR

COUNTY RECORDER
COUNTY OF RAMSEY, STATE OF MINNESOTA
I hereby certify that this plat of SHADE TREE CORNER was filed in the office of the County Recorder for public record on this 28 day of September, 2020, at 12:00 clock P.M., and was duly filed in Book 129 of Plats, Page 21, as Document Number 483187C.

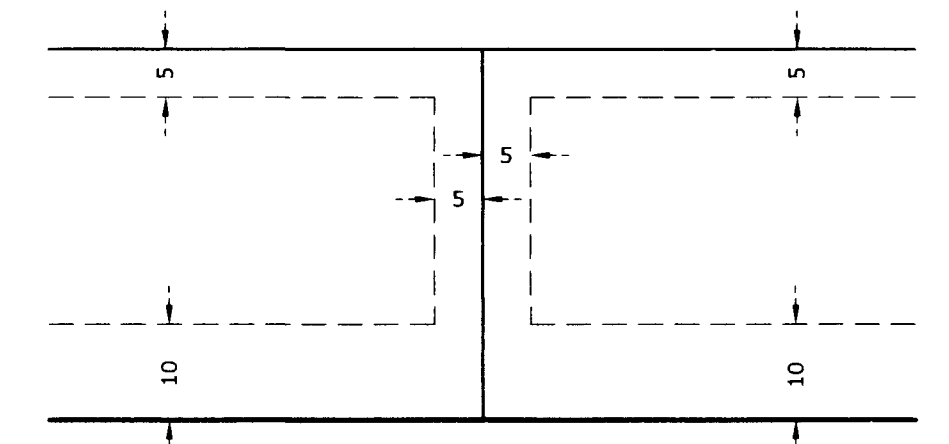
Deputy County Recorder

SHADE TREE CORNER

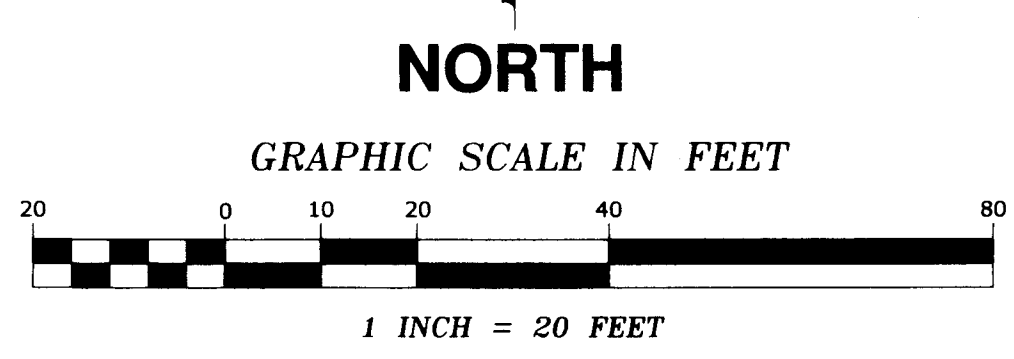


TYPICAL EASEMENTS

DRAINAGE AND UTILITY EASEMENTS ARE SHOWN THUS:



BEING 5 FEET IN WIDTH AND ADJOINING SIDE AND REAR LOT LINES AND 10 FEET IN WIDTH AND ADJOINING PUBLIC WAYS, UNLESS OTHERWISE SHOWN ON THIS PLAT.



- DENOTES RAMSEY COUNTY CAST IRON MONUMENT
- DENOTES 1/2 INCH BY 18 INCH IRON PIPE MONUMENT SET AND MARKED RLS 25343
- DENOTES FOUND 1/2 INCH PINCH TOP IRON MONUMENT

FOR THE PURPOSES OF THIS PLAT, THE WEST LINE OF THE NORTHEAST QUARTER OF SECTION 10, TOWNSHIP 29 NORTH, RANGE 23 WEST, RAMSEY COUNTY, MINNESOTA, IS ASSUMED TO BEAR SOUTH 00 DEGREES 48 MINUTES 56 SECONDS EAST.