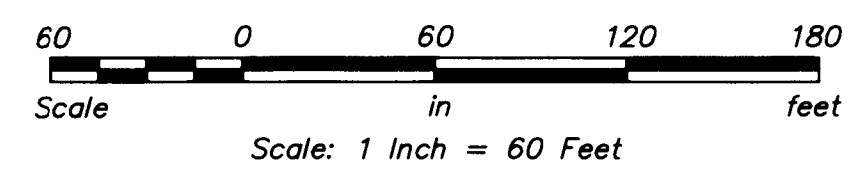
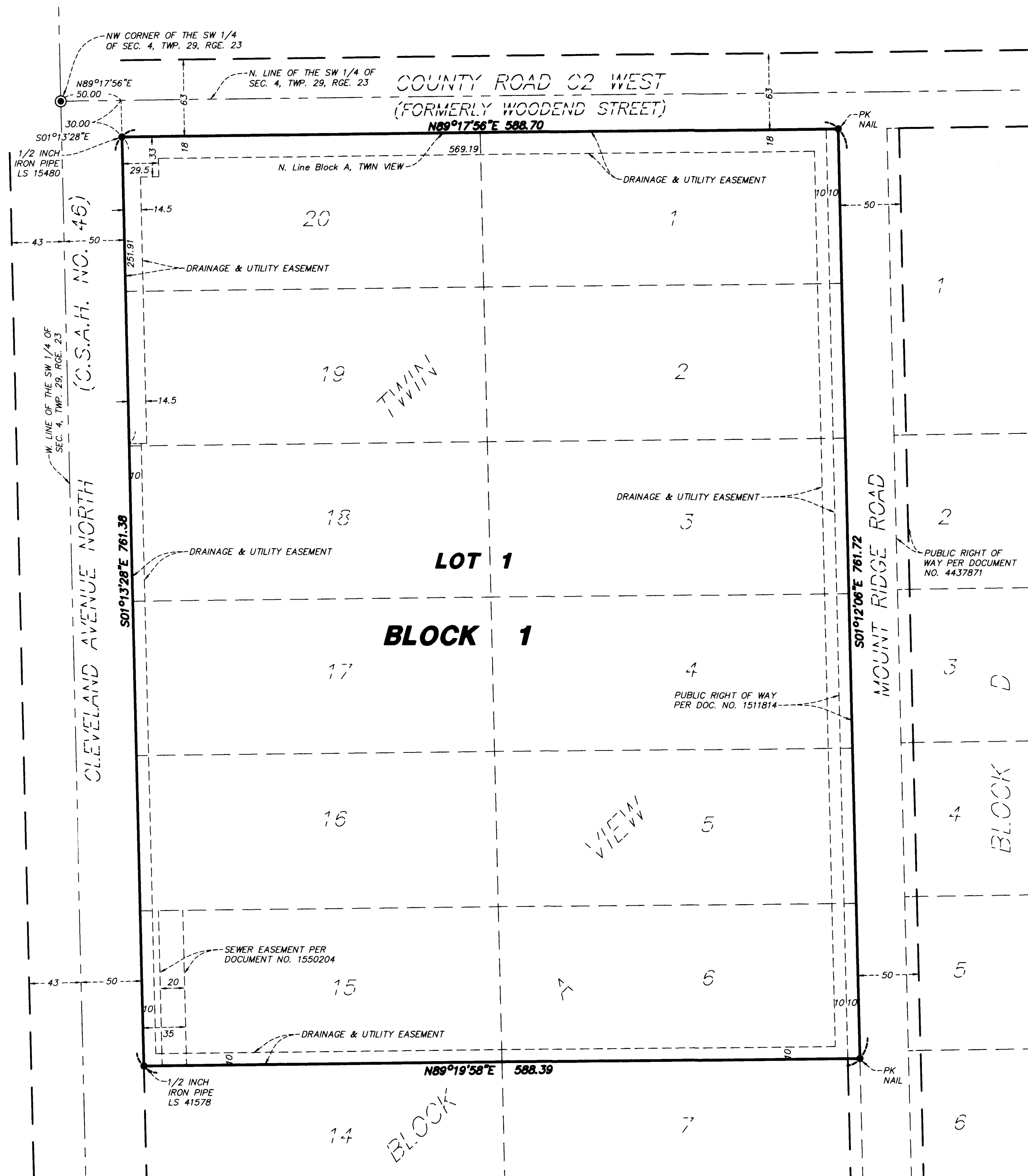


TWIN VIEW FIRST ADDITION



The north line of Block A, TWIN VIEW, is assumed to bear N 89°17'56" E

- Denotes set 1/2 inch rebar iron monument, with Cap No. 45873
- Denotes found monument, marked as shown
- ◎ Denotes found cast iron monument

KNOW ALL PERSONS BY THESE PRESENTS: That Dorso Building Company, LLP, a Minnesota limited liability partnership, fee owner of the following described property, situated in the City of Roseville, County of Ramsey, State of Minnesota:

Lots 1, 2, 3, 4, 5, 6, 15, 16, 17, 18, 19 and 20, Block A, TWIN VIEW, according to the records plat thereof, Ramsey County, Minnesota.

Has caused the same to be surveyed and platted as TWIN VIEW FIRST ADDITION and does hereby dedicate to the public for public use forever the drainage and utility easements as shown on this plat.

In witness whereof said Dorso Building Company, LLP, a Minnesota limited liability partnership, has caused these presents to be signed by its proper officer this 21st day of May, 2019.

SIGNED: Dorso Building Company, LLP

[Signature]
Name, Title

STATE OF MINNESOTA
COUNTY OF RAMSEY

The foregoing instrument was acknowledged before me this 21st day of May, 2019, by Nathan E. Dorso Managing Partner of Dorso Building Company, LLP, a Minnesota limited liability partnership, on behalf of the partnership.

[Signature] *[Signature]*
(Signature) (Name Printed)

Notary Public, Ramsey County, Minnesota
My Commission Expires 12/21/21

I, Nathan H. Carlson, Professional Land Surveyor, do hereby certify that I have surveyed or directly supervised the survey of the property described on this plat; prepared this plat or directly supervised the preparation of this plat; that this plat is a correct representation of the boundary survey; that all mathematical data and labels are correctly designated on this plat; that all monuments depicted on this plat have been correctly set; that all water boundaries and wet lands, as defined in Minnesota Statutes, Section 505.01, Subd. 3, as of the date of the surveyor's certification are shown and labeled on this plat; and all public ways are shown and labeled on this plat.

Dated this 20th day of May, 2019.

[Signature]
Nathan H. Carlson, Professional Land Surveyor
Minnesota License No. 45873

STATE OF MINNESOTA
COUNTY OF HENNEPIN

The foregoing Surveyor's Certificate was acknowledged before me this 21st day of May, 2019, by Nathan H. Carlson, Professional Land Surveyor.

[Signature] *[Signature]*
(Signature) (Name Printed)

Notary Public, Clatsop County, Minnesota
My Commission Expires January 31, 2022

CITY OF ROSEVILLE, MINNESOTA

We do hereby certify that on the 21st day of May, 2019, the City Council of the City of Roseville, Minnesota approved this plat. Also, the conditions of Minnesota Statutes, Section 505.03, Subd. 2, have been fulfilled.

[Signature] *[Signature]*
Mayor Manager

PROPERTY TAX, RECORDS AND ELECTION SERVICES DEPARTMENT

Pursuant to Minnesota Statutes, Section 505.021, Subd. 9, taxes payable in the year 2019 on the land hereinbefore described have been paid. Also, pursuant to Minnesota Statutes, Section 272.12, there are no delinquent taxes and transfer entered this 10 day of June, 2019.

Christopher A. Samuel, Ramsey County Auditor/Treasurer

By _____ Deputy

COUNTY SURVEYOR

Pursuant to MN Statutes, Section 383A.42 this plat has been approved this 7th day of JUNE, 2019.

[Signature]
Daniel D. Baar, L.S.
Ramsey County Surveyor

COUNTY RECORDER, County of Ramsey, State of Minnesota

I hereby certify that this plat of TWIN VIEW FIRST ADDITION was filed in the office of the County Recorder for public record on this 10 day of June, 2019, at 4 o'clock P.M., and was duly filed in Book 128, of Plats, Page 34, as Document Number 4759745.

Deputy County Recorder