

ROSEVILLE CENTER SECOND ADDITION

KNOW ALL MEN BY THESE PRESENTS: That Brixmor SPE 5 LLC, a Delaware limited liability company, owner of the following described property situated in the City of Roseville, County of Ramsey, State of Minnesota:

Lots 2 and 3, Block 1, Roseville Center

Has caused the same to be surveyed and platted as ROSEVILLE CENTER SECOND ADDITION and does hereby dedicate to the public for public use the drainage and utility easement as shown on this plat.

In witness whereof said Brixmor SPE 5 LLC, a Delaware limited liability company, has caused these presents to be signed by its proper officer this 27 day of September, 2018.

SIGNED: Brixmor SPE 5 LLC, a Delaware limited liability company
[Signature] its Executive Vice President

STATE OF Illinois
COUNTY OF DuPage

The foregoing instrument was acknowledged before me this 27 day of September, 2018, by John Hendrickson, the Executive Vice President of said Brixmor SPE 5 LLC, a Delaware limited liability company, on behalf of said company.

[Signature]
Heather Burns
Notary Public, Illinois
My Commission Expires June 2, 2022

I, Arlee J. Carlson, do hereby certify that I have surveyed or directly supervised the survey of the property described on this plat; prepared this plat or directly supervised the preparation of this plat; that this plat is a correct representation of the boundary survey; that all mathematical data and labels are correctly designated on this plat; that all monuments depicted on this plat have been correctly set; that all water boundaries and wet lands, as defined in Minnesota Statutes, Section 505.01, Subd. 3, as of the date of the surveyor's certification are shown and labeled on this plat; and all public ways are shown and labeled on this plat.

Dated this 20th day of September, 2018.

[Signature]
Arlee J. Carlson
Arlee J. Carlson, Professional Land Surveyor
Minnesota License No. 44900

STATE OF MINNESOTA
COUNTY OF HENNEPIN

The foregoing Surveyor's Certificate was acknowledged before me on this 20th day of SEPTEMBER, 2018, by Arlee J. Carlson, a Professional Land Surveyor.

[Signature]
Susan M. Tarasak
SUSAN M. TARASAK
Notary Public, Minnesota
My Commission Expires January 31, 2023

CITY OF ROSEVILLE, MINNESOTA

We do hereby certify that on the 21st day of May, 2018, the City Council of the City of Roseville, Minnesota, approved this plat. Also, the conditions of Minnesota Statutes, Section 505.03, Subd. 2, have been fulfilled.

Signed: *[Signature]* Mayor

Signed: *[Signature]* Manager

PROPERTY TAX, RECORDS AND ELECTION SERVICES DEPARTMENT

Pursuant to Minnesota Statutes, Section 505.021, Subd. 9, taxes payable in the year 2018 on the land hereinbefore described have been paid. Also, pursuant to Minnesota Statutes, Section 272.12, there are no delinquent taxes and transfer entered this 22nd day of OCTOBER, 2018.

Christopher A. Samuel, Ramsey County Auditor/Treasurer

By _____ Deputy

COUNTY SURVEYOR

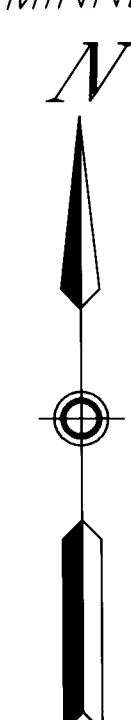
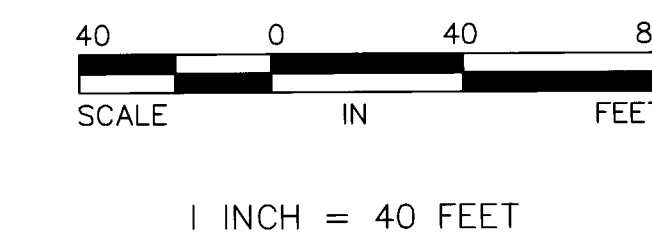
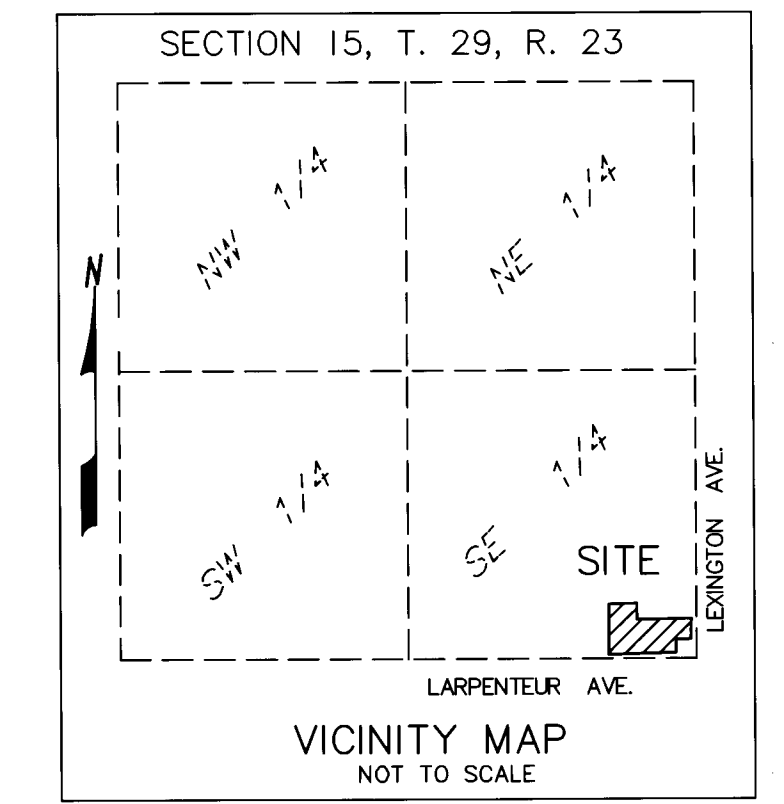
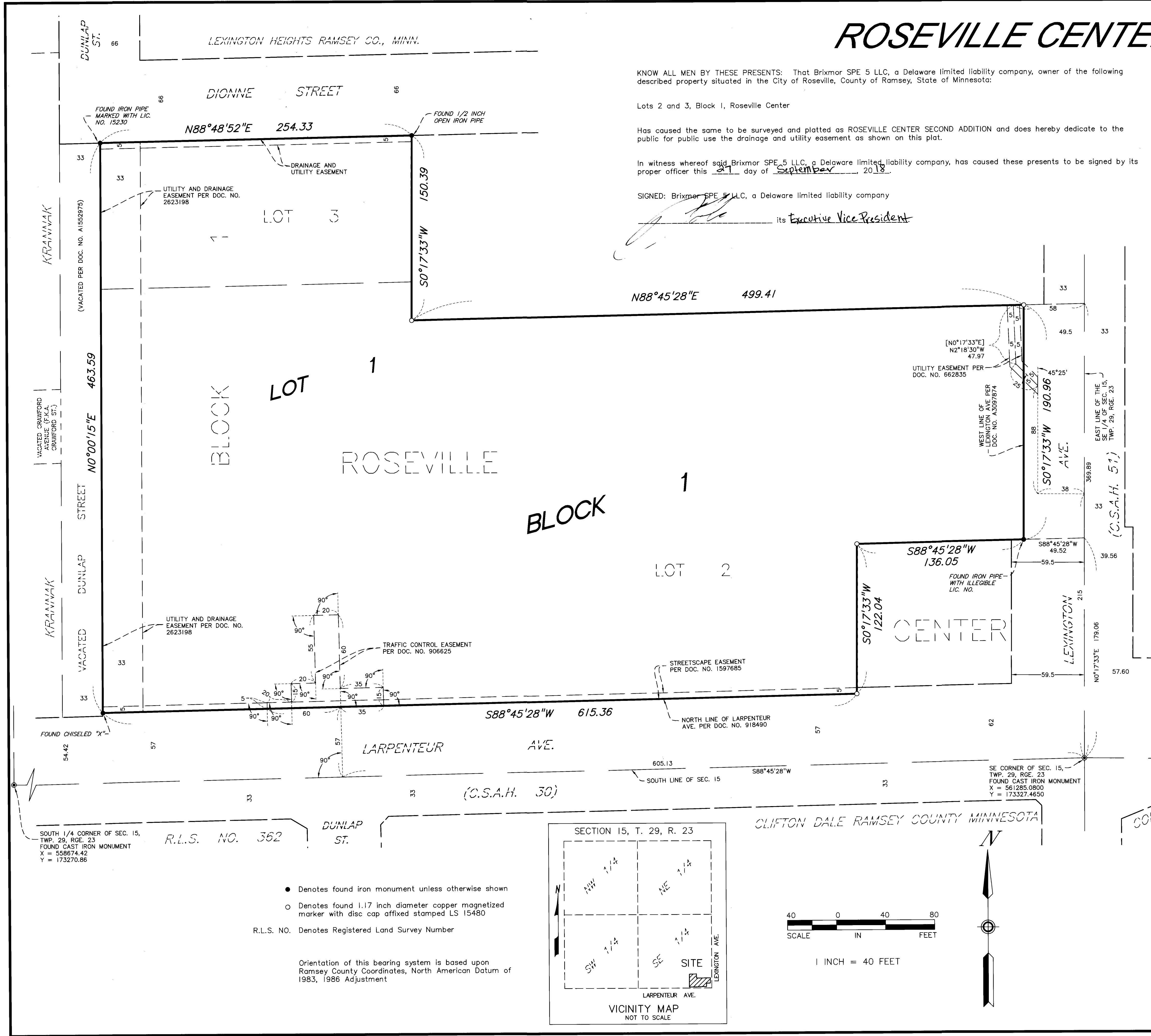
Pursuant to Minnesota Statutes, Section 383A.42, this plat is approved this 12th day of OCTOBER, 2018.

[Signature]
Craig W. Hinzman
Craig W. Hinzman, C.E.
Ramsey County Surveyor

REGISTRAR OF TITLES
COUNTY OF RAMSEY, STATE OF MINNESOTA

I hereby certify that this plat of ROSEVILLE CENTER SECOND ADDITION was filed in the office of the Registrar of Titles for public record on this 22nd day of OCTOBER, 2018 at 1:00 o'clock P.M. and was duly filed in Book 51 of Plats, Page 26, as Document Number 2626264.

Deputy Registrar of Titles



● Denotes found iron monument unless otherwise shown
○ Denotes found 1.17 inch diameter copper magnetized marker with disc cap affixed stamped LS 15480
R.L.S. NO. Denotes Registered Land Survey Number
Orientation of this bearing system is based upon Ramsey County Coordinates, North American Datum of 1983, 1986 Adjustment

SOUTH 1/4 CORNER OF SEC. 15, TWP. 29, RGE. 23
FOUND CAST IRON MONUMENT
X = 558674.42
Y = 173270.86

SE CORNER OF SEC. 15, TWP. 29, RGE. 23
FOUND CAST IRON MONUMENT
X = 561285.0800
Y = 173327.4650