

SHOREVIEW CORPORATE CENTER SECOND ADDITION

KNOW ALL PERSONS BY THESE PRESENTS: That Shoreview Ridge, LLC, a Delaware limited liability company, owner of the following described property situated in the City of Shoreview, County of Ramsey, State of Minnesota:

Lots 1, 2, 3 and 4, Block 1, SHOREVIEW CORPORATE CENTER, Ramsey County, Minnesota

Has caused the same to be surveyed and platted as SHOREVIEW CORPORATE CENTER SECOND ADDITION and does hereby dedicate to the public for public use the public ways and the drainage and utility easements as shown on this plat.

In witness whereof said Shoreview Ridge, LLC, a Delaware limited liability company, has caused these presents to be signed by its proper officer this 28 day of June, 2017.

Signed: **Shoreview Ridge, LLC**
[Signature], Chief Manager

STATE OF MINNESOTA
COUNTY OF Hennepin

The foregoing instrument was acknowledged before me this 28 day of June, 2017, by JOHN SCHOLZ, Chief Manager of Shoreview Ridge, LLC, a Delaware limited liability company, on behalf of the company.

[Signature]
Notary Public, Hennepin County, Minnesota

[Signature]
Georgette Walczyk-Conneff

My commission expires 1/31/18

I, Rory L. Synsteliën, Licensed Land Surveyor, do hereby certify that I have surveyed or directly supervised the survey of the property described on this plat; prepared this plat or directly supervised the preparation of this plat; that this plat is a correct representation of the boundary survey; that all mathematical data and labels are correctly designated on this plat; that all monuments depicted on this plat have been correctly set; that all water boundaries and wet lands, as defined in Minnesota Statutes, Section 505.01, Subd. 3, as of the date of the surveyor's certification are shown and labeled on this plat; and all public ways are shown and labeled on this plat.

Dated this 31st day of MAY, 2017.

[Signature]
Rory L. Synsteliën, Licensed Land Surveyor
Minnesota License No. 44565

STATE OF MINNESOTA
COUNTY OF DAKOTA

The foregoing Surveyor's Certificate was acknowledged before me this 31st day of May, 2017 by Rory L. Synsteliën, a Licensed Land Surveyor.

[Signature]
Notary Public, Dakota County, Minnesota

[Signature]
Beth Chlipala

My commission expires 1-31-2021

City of Shoreview

We do hereby certify that on the 5th day of April, 2017, the City Council of the City of Shoreview, Minnesota, approved this plat. Also, the conditions of Minnesota Statutes, Section 505.03, Subd. 2, have been fulfilled.

[Signature]
Clerk

[Signature]
Mayor

Department of Property Records and Revenue

Pursuant to Minnesota Statutes, Section 505.021, Subd. 9, taxes payable in the year _____ on the land hereinbefore described have been paid. Also, pursuant to Minnesota Statutes, Section 272.12, there are no delinquent taxes and transfer entered this ___ day of _____, 20__.

Department of Property Records and Revenue

By _____, Deputy

County Surveyor

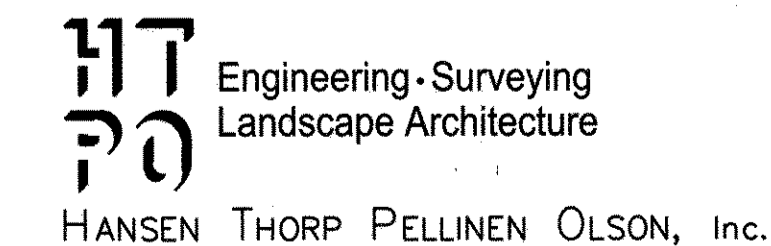
Pursuant to Minnesota Statutes, Section 383A.42, this plat is approved this 29th day of June, 2017.

[Signature]
Craig W. Hinzman, L.S.
Ramsey County Surveyor

Registrar of Titles, County of Ramsey, State of Minnesota

I hereby certify that this plat of SHOREVIEW CORPORATE CENTER SECOND ADDITION was filed in the office of the Registrar of Titles for public record on this 29 day of JUNE, 2017, at 12 o'clock P.M. and was duly filed in Book 51 of Plats, Pages 6 and 7, as Document Number 2590798.

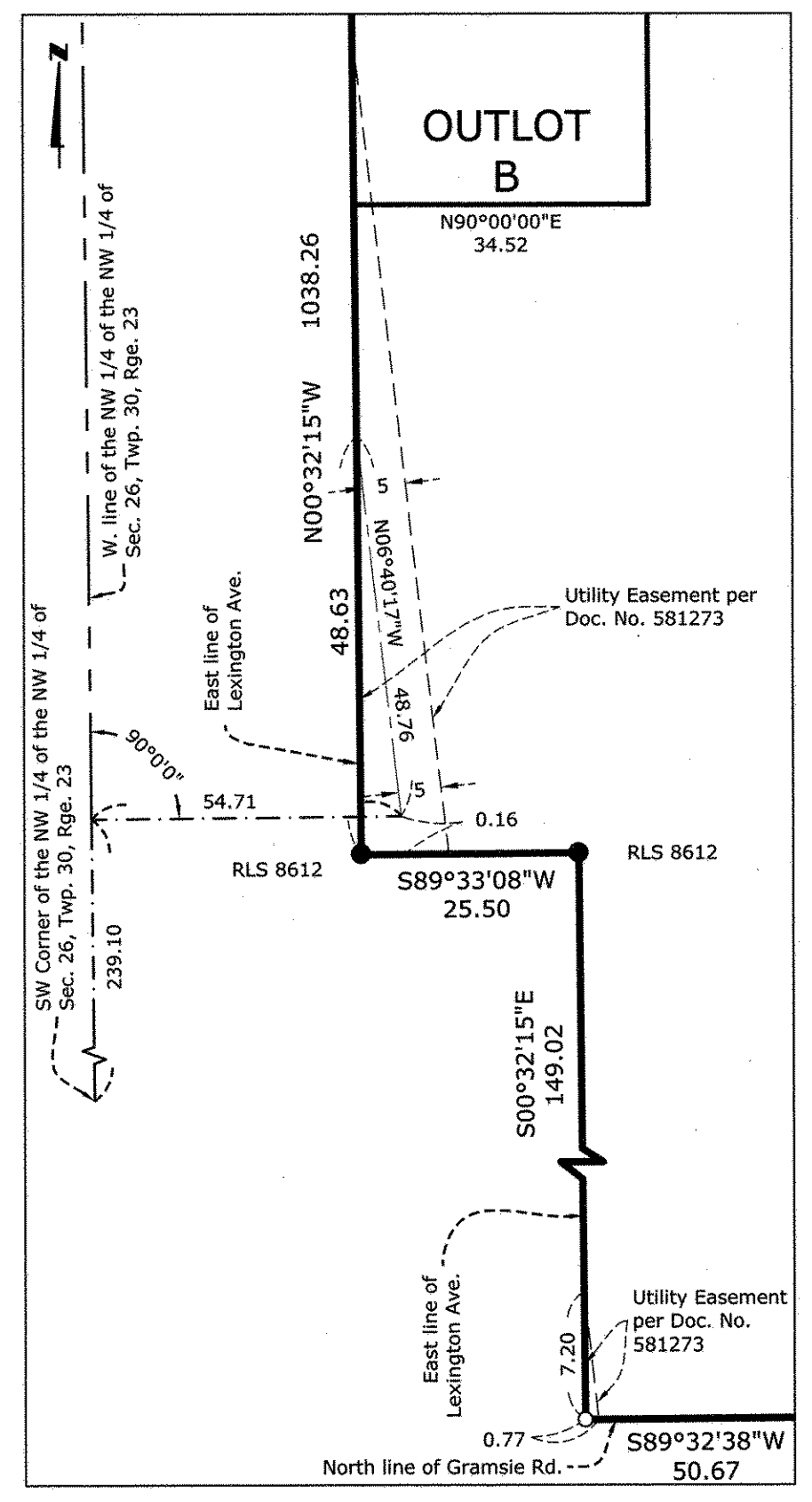
Deputy Registrar of Titles



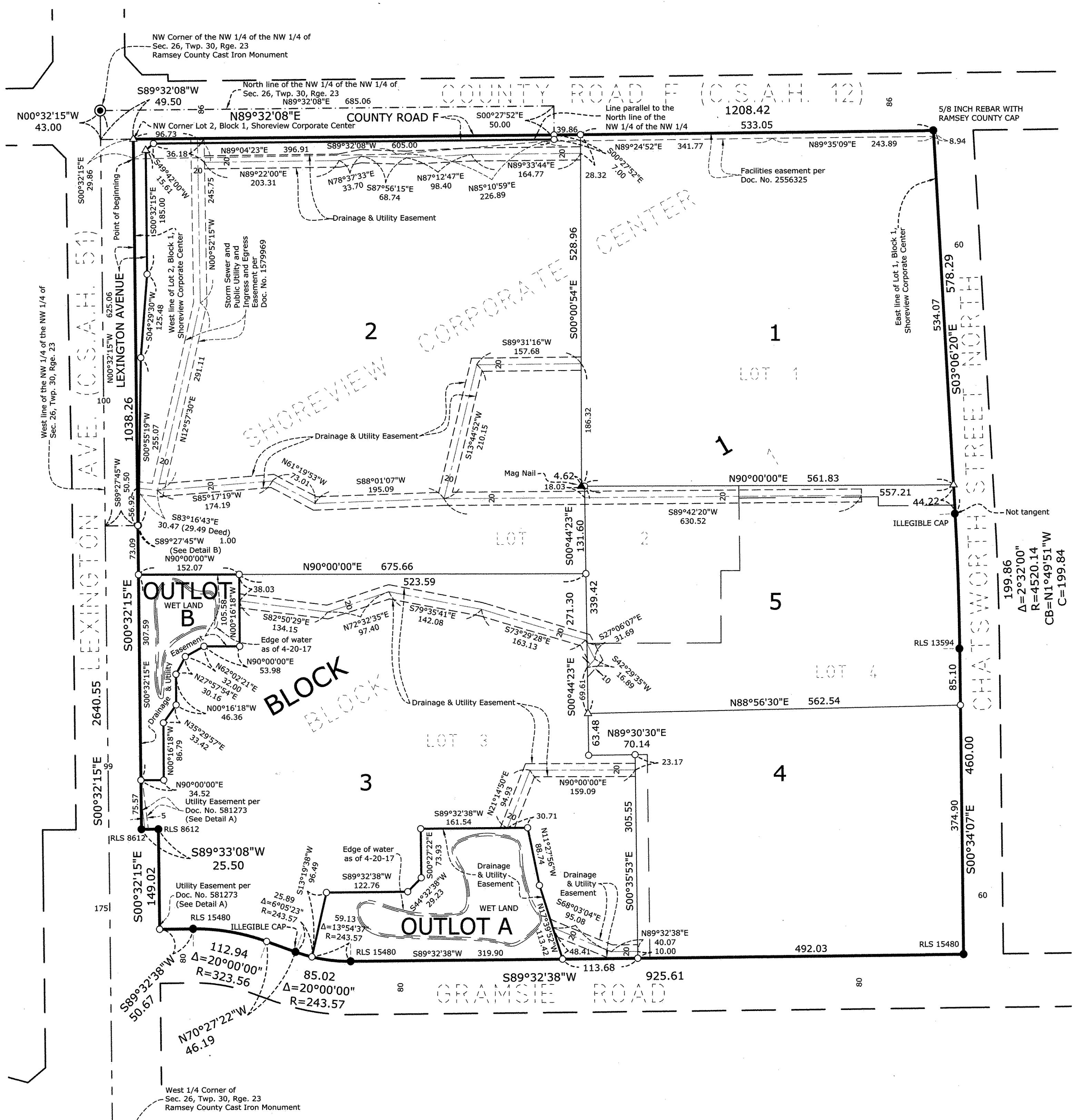
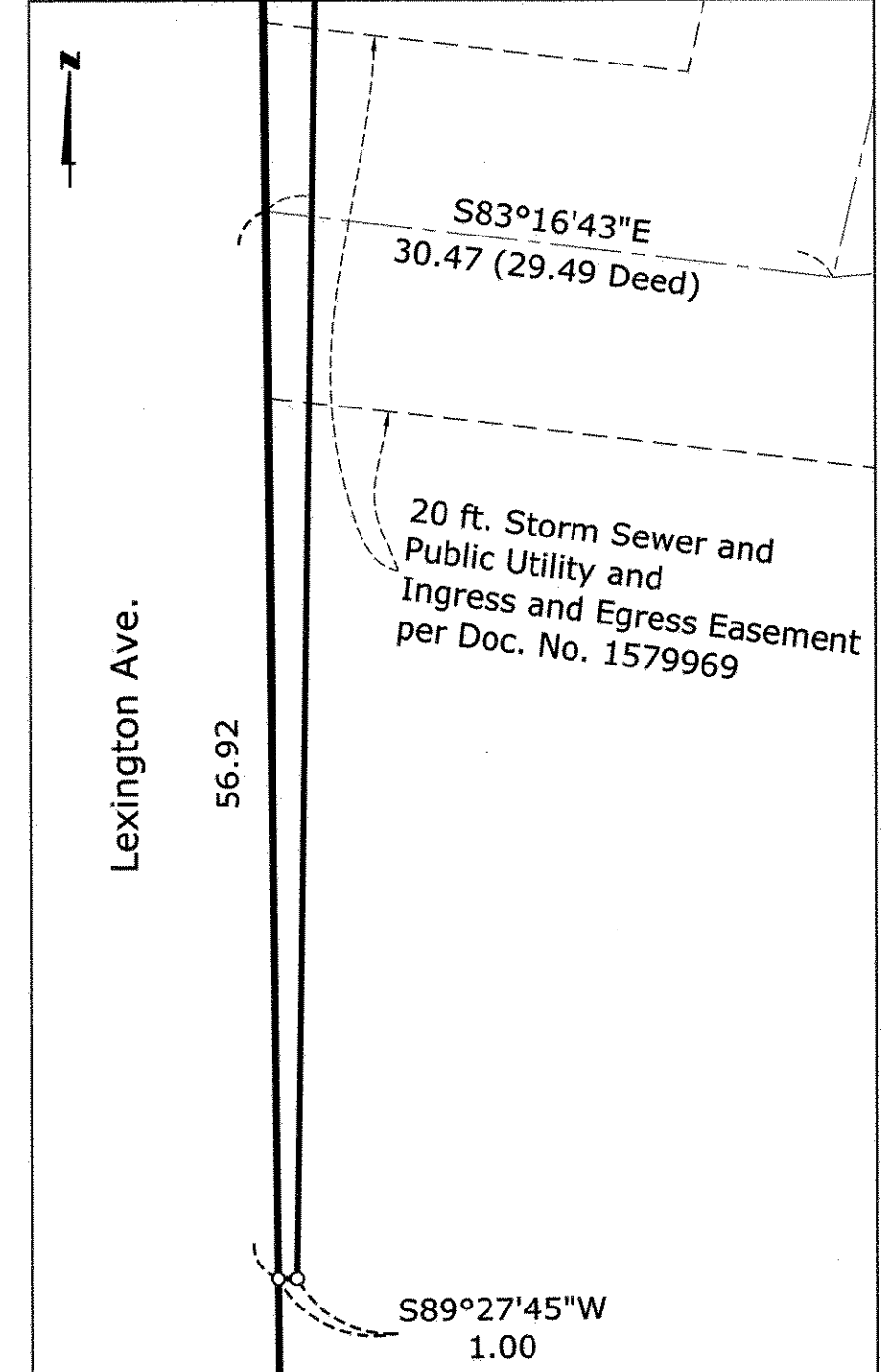
HANSEN THORP PELLINEN OLSON, Inc.

SHOREVIEW CORPORATE CENTER SECOND ADDITION

Detail A
No Scale



Detail B
No Scale



- Denotes 1/2 inch by 14-inch iron pipe monument set and marked by License No. 44565.
- △ Denotes Mag Nail and Disc set and marked by License No. 44565.
- Denotes 1/2 inch iron pipe monument found and marked with R.L.S. No. 15480, unless shown otherwise.

Bearings for this plat are based on the West line of the Northwest Quarter of the Northwest Quarter of Section 26, Township 30, Range 23 having a bearing of S00°32'15\"/>

