

# VORAN PROPERTIES ADDITION

KNOW ALL MEN BY THESE PRESENTS: That VoranDeSoto, LLC, a Minnesota limited liability company, owner of the following described property situated in the City of Maplewood, County of Ramsey, State of Minnesota:

The North Four Hundred Forty-four (444) feet of the East Nine Hundred Ten (910) feet of the Northeast Quarter (NE 1/4) of the Southeast Quarter (SE 1/4) of Section Three (3), Township Twenty-nine (29), Range Twenty-two (22).

Has caused the same to be surveyed and platted as VORAN PROPERTIES ADDITION and does hereby dedicate to the public for public use forever the public ways and the drainage and utility easements as shown on this plat.

In witness whereof said VoranDeSoto, LLC, a Minnesota limited liability company, has caused these presents to be signed by its proper officer this 7th day of April, 2017.

Signed: VoranDeSoto, LLC

Paul M. Schreier Chief Manager  
Paul M. Schreier

STATE OF MINNESOTA  
COUNTY OF RAMSEY

The foregoing instrument was acknowledged before me this 7 day of April, 2017 by Paul M. Schreier, Chief Manager of VoranDeSoto, LLC, a Minnesota limited liability company, on behalf of said company.

Thomas M. Schaefer  
Notary Public, Minnesota  
My Commission Expires January 31, 2020

I, Leonard F. Carlson, Licensed Land Surveyor, do hereby certify that I have surveyed or directly supervised the survey of the property described on this plat; prepared this plat or directly supervised the preparation of this plat; that this plat is a correct representation of the boundary survey; that all mathematical data and labels are correctly designated on this plat; that all monuments depicted on this plat have been correctly set; that all water boundaries and wet lands, as defined in Minnesota Statutes, Section 505.01, Subd. 3, as of the date of the surveyor's certification are shown and labeled on this plat; and all public ways are shown and labeled on this plat.

Dated this 22nd day of March, 2017.

Leonard F. Carlson  
Leonard F. Carlson, Land Surveyor  
Minnesota License No. 44890

STATE OF MINNESOTA  
COUNTY OF HENNEPIN

The foregoing Surveyor's Certificate was acknowledged before me this 22nd day of MARCH, 2017, by Leonard F. Carlson, a Licensed Land Surveyor.

Susan Marie Tarasak  
SUSAN MARIE TARASAK  
Notary Public, Hennepin County, Minnesota  
My Commission Expires JANUARY 31, 2018

City of Maplewood, Minnesota

We do hereby certify that on the 24th day of April, 2017, the City Council of the City of Maplewood, Minnesota, approved this plat. Also the conditions of Minnesota Statutes, Section 505.03, Subd. 2, have been fulfilled.

Nora Jank, Mayor Andrea Lindt, Clerk

Department of Property Records and Revenue

Pursuant to Minnesota Statutes, Section 505.021, Subd. 9, taxes payable in the year 20\_\_ on the land hereinbefore described have been paid. Also, pursuant to Minnesota Statutes, Section 272.12, there are no delinquent taxes and transfer entered this \_\_\_ day of \_\_\_, 20\_\_.

Department of Property Records and Revenue  
By \_\_\_\_\_, Deputy

County Surveyor

Pursuant to Minnesota Statutes, Section 383A.42, this plat is approved this 1st day of May, 2017.

Craig W. Hinzman By Daniel D. Baur  
Craig W. Hinzman, L.S., Ramsey County Surveyor Daniel D. Baur, L.S.  
Deputy Ramsey County Surveyor

County Recorder  
County of Ramsey, State of Minnesota

I hereby certify that this plat of VORAN PROPERTIES ADDITION was filed in the office of the County Recorder for public record on this 3rd day of May, 2017, at 1:00 o'clock P. M. and was duly filed in Book 127 of Plats, Pages 44 and 45, as Document Number 4657351.

Deputy County Recorder

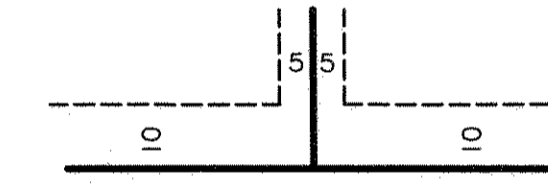
# VORAN PROPERTIES ADDITION

MAPLEWOOD MALL ADDITION

### LEGEND

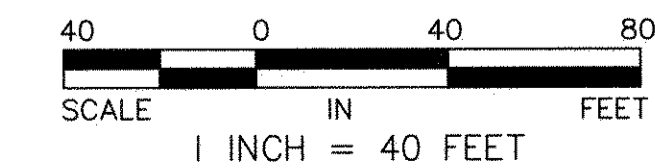
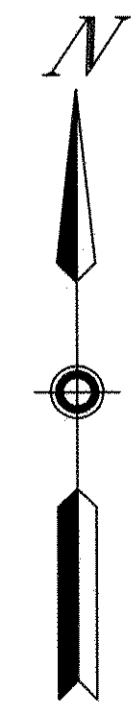
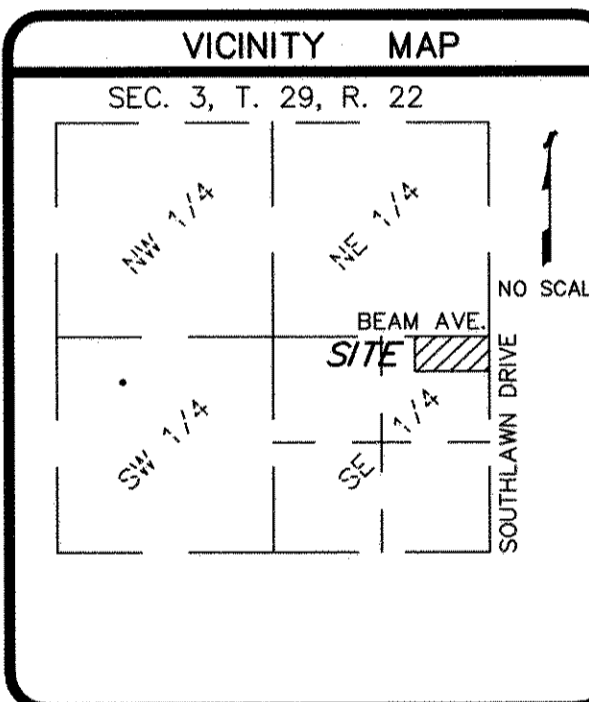
- Denotes 1/2 inch X 14 inch iron pipe monument set marked with P.L.S. No. 44890
- Denotes found 1/2 inch iron pipe monument.

DRAINAGE AND UTILITY EASEMENTS ARE SHOWN THUS:



Being 5 feet in width adjoining lot lines and 10 feet in width adjoining public ways.

Bearings for this plat are based on the east line of the Southeast Quarter of Section 3, Township 29, Range 22, having an assumed bearing of S0°51'35"E.



## SUNDE LAND SURVEYING

