

FARRINGTON ESTATES

KNOW ALL MEN BY THESE PRESENTS: That Farrington Estates, LLC, a Minnesota limited liability company, fee owner of the following described property situated in the City of Roseville, County of Ramsey, State of Minnesota:

Lot 7, of Michel's Rearrangement of Lots 9 to 16 inclusive of Mackubin and Iglehart's Addition of Out Lots to St. Paul, except the East 240 feet of South 200 feet thereof and subject to State Trunk Highway 36.

Has caused the same to be surveyed and platted as FARRINGTON ESTATES and does hereby dedicate to the public for public use forever the public ways and the drainage and utility easements as shown on this plat.

In witness whereof said Farrington Estates, LLC, a Minnesota limited liability company, has caused these presents to be signed by its proper officer this 16 day of FEBRUARY, 2016

Signed: Farrington Estates, LLC

Michael Muniz
Michael Muniz, Chief Manager

STATE OF MINNESOTA
COUNTY OF Anoka

The foregoing instrument was acknowledged before me this 16th day of February, 2016 by Michael Muniz, Chief Manager of Farrington Estates, LLC, a Minnesota limited liability company, on behalf of the company.

Nicole A. Johnson
Nicole A. Johnson
Notary Public, Anoka County, Minnesota
My Commission Expires January 31, 2020

I, Jason E. Rud, Licensed Land Surveyor, do hereby certify that I have surveyed or directly supervised the survey of the property described on this plat; prepared this plat or directly supervised the preparation of this plat; that this plat is a correct representation of the boundary survey; that all mathematical data and labels are correctly designated on this plat; that all monuments depicted on this plat have been correctly set; that all monuments indicated on this plat will be correctly set within one year; that all water boundaries and wet lands, as defined in Minnesota Statutes, Section 505.01, Subd. 3, as of the date of the surveyor's certification are shown and labeled on this plat; and all public ways are shown and labeled on this plat.
Dated this 16th day of FEBRUARY, 2016.

Jason E. Rud
Jason E. Rud, Land Surveyor
Minnesota License No. 41578

STATE OF MINNESOTA
COUNTY OF Anoka

The foregoing Surveyor's Certificate was acknowledged before me this 16th day of February, 2016 by Jason E. Rud, a Licensed Land Surveyor.

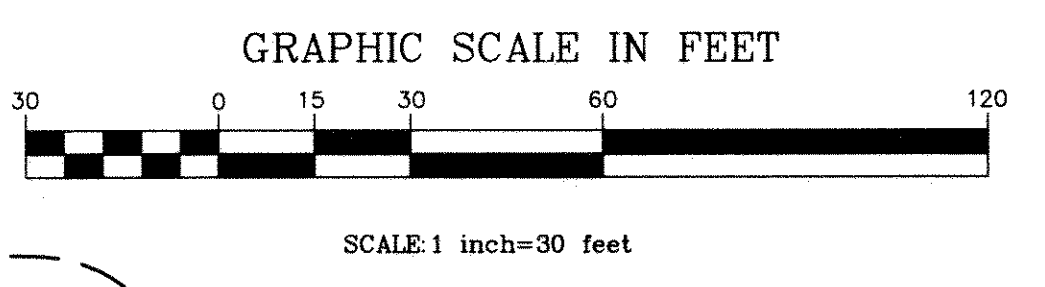
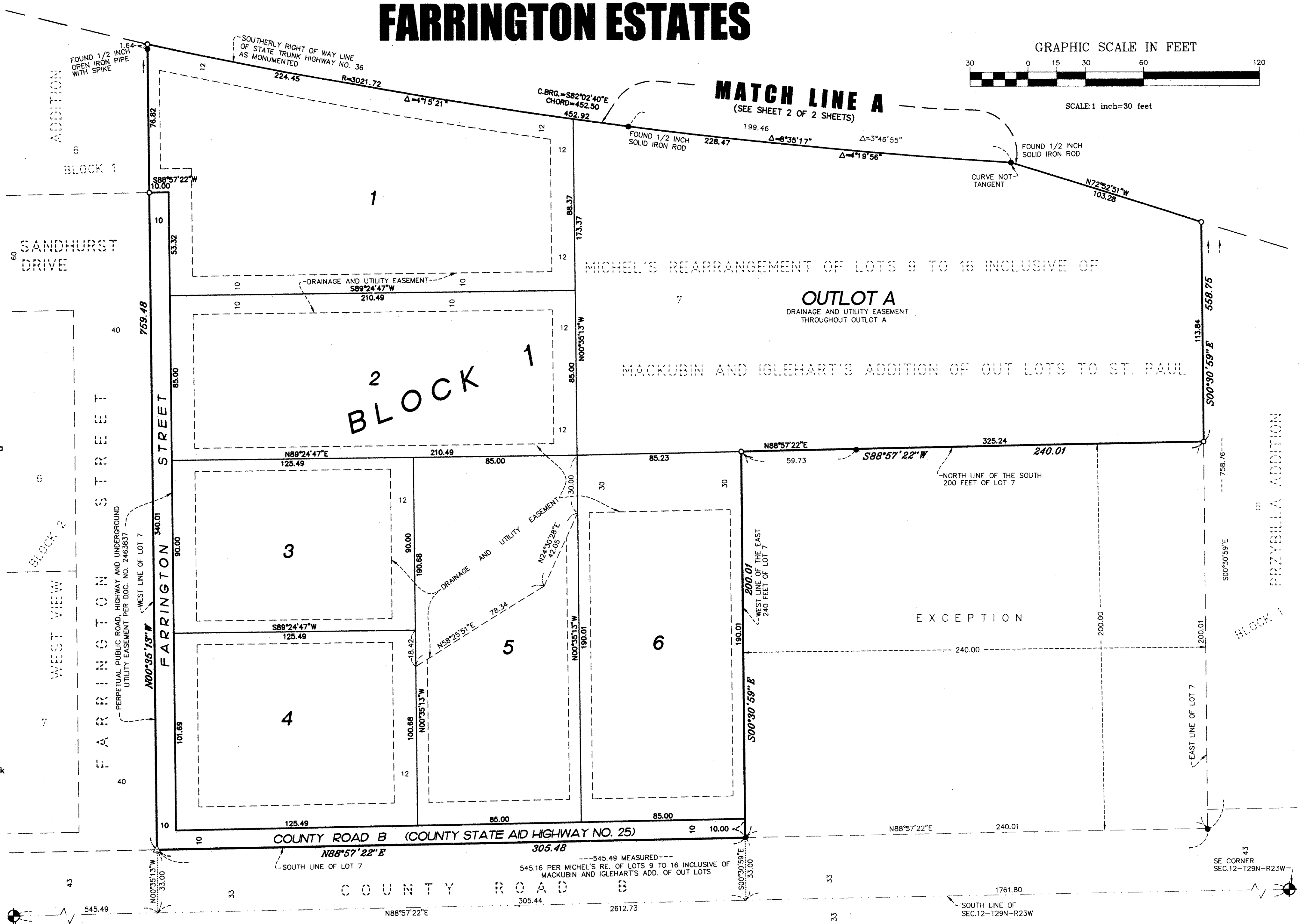
Nicole A. Johnson
Nicole A. Johnson
Notary Public, Anoka County, Minnesota
My Commission Expires January 31, 2020

CITY COUNCIL OF CITY OF ROSEVILLE
We do hereby certify that on the 8th day of February, 2016 the City Council of the City of Roseville, Minnesota, approved this plat. Also, the conditions of Minnesota Statutes, Section 505.03, Subd. 2, have been fulfilled.
[Signature] Mayor *[Signature]* City Clerk

DEPARTMENT OF PROPERTY RECORDS AND REVENUE
Pursuant to Minnesota Statutes, Section 505.021, Subd. 9, taxes payable in the year _____ on the land hereinbefore described have been paid. Also, pursuant to Minnesota Statutes, Section 272.12, there are no delinquent taxes and transfers entered this _____ day of _____, 20____.
By _____ Deputy
Department of Property Records and Revenue

COUNTY SURVEYOR
Pursuant to Minnesota Statutes, Section 383A.42, this plat is approved this 24th day of February, 2016.
Craig W. Kinzman
Craig W. Kinzman, L.S.
Ramsey County Surveyor

COUNTY RECORDER,
COUNTY OF RAMSEY, STATE OF MINNESOTA
I hereby certify that this plat of FARRINGTON ESTATES was filed in the office of the County Recorder for public record on this 29th day of February, 2016 at 4 o'clock P.M., and was duly filed in Book 127 of Plats, Pages 19 and 20, as Document Number 4597234.
Deputy County Recorder



MATCH LINE A
(SEE SHEET 2 OF 2 SHEETS)

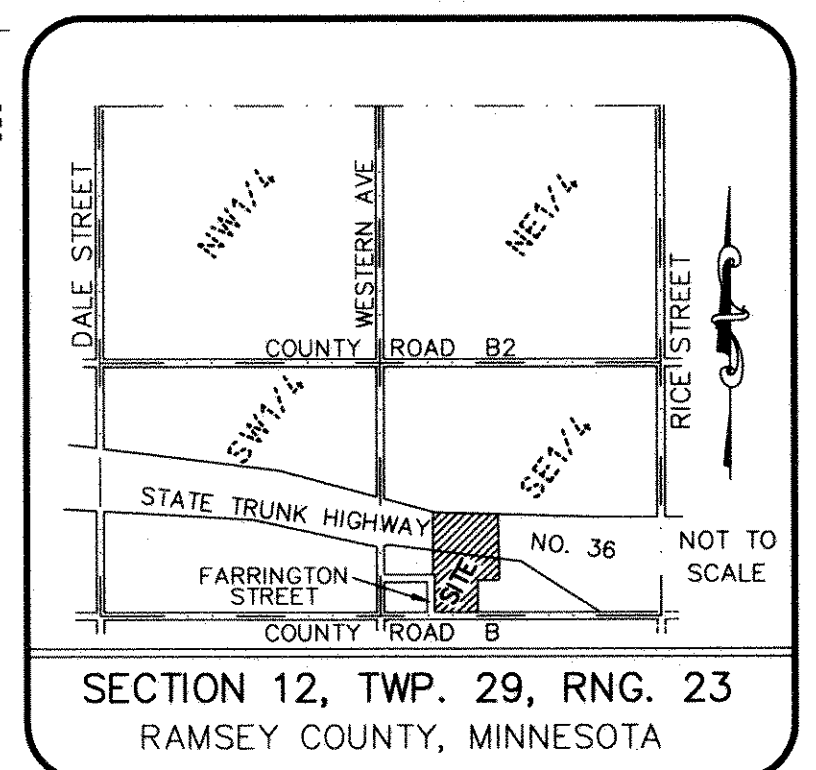
OUTLOT A
DRAINAGE AND UTILITY EASEMENT THROUGHOUT OUTLOT A

BLOCK 1
BLOCK 2

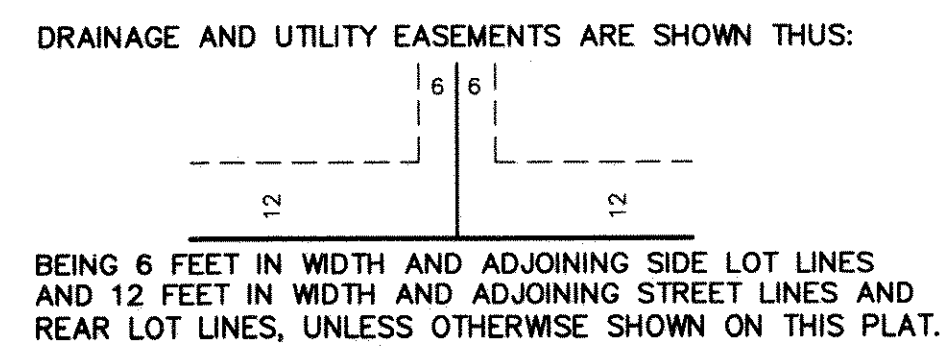
COUNTY ROAD B (COUNTY STATE AID HIGHWAY NO. 25)
N88°57'22"E 305.48

COUNTY ROAD B (COUNTY STATE AID HIGHWAY NO. 25)

VICINITY MAP

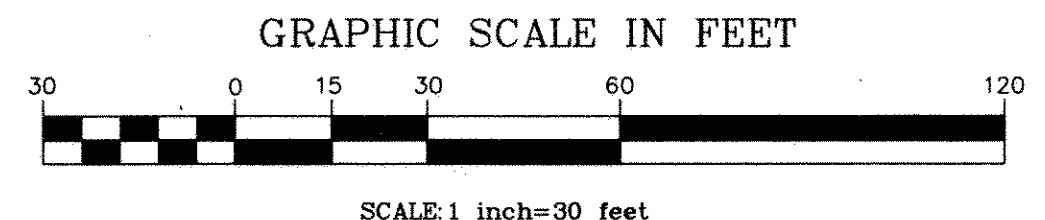
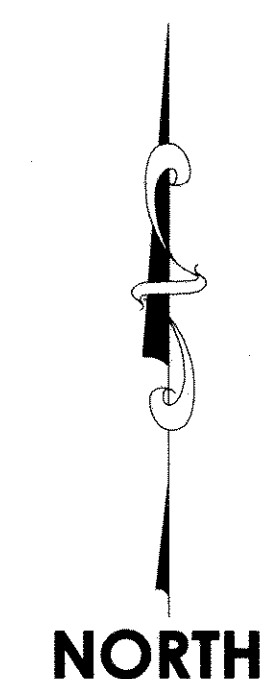
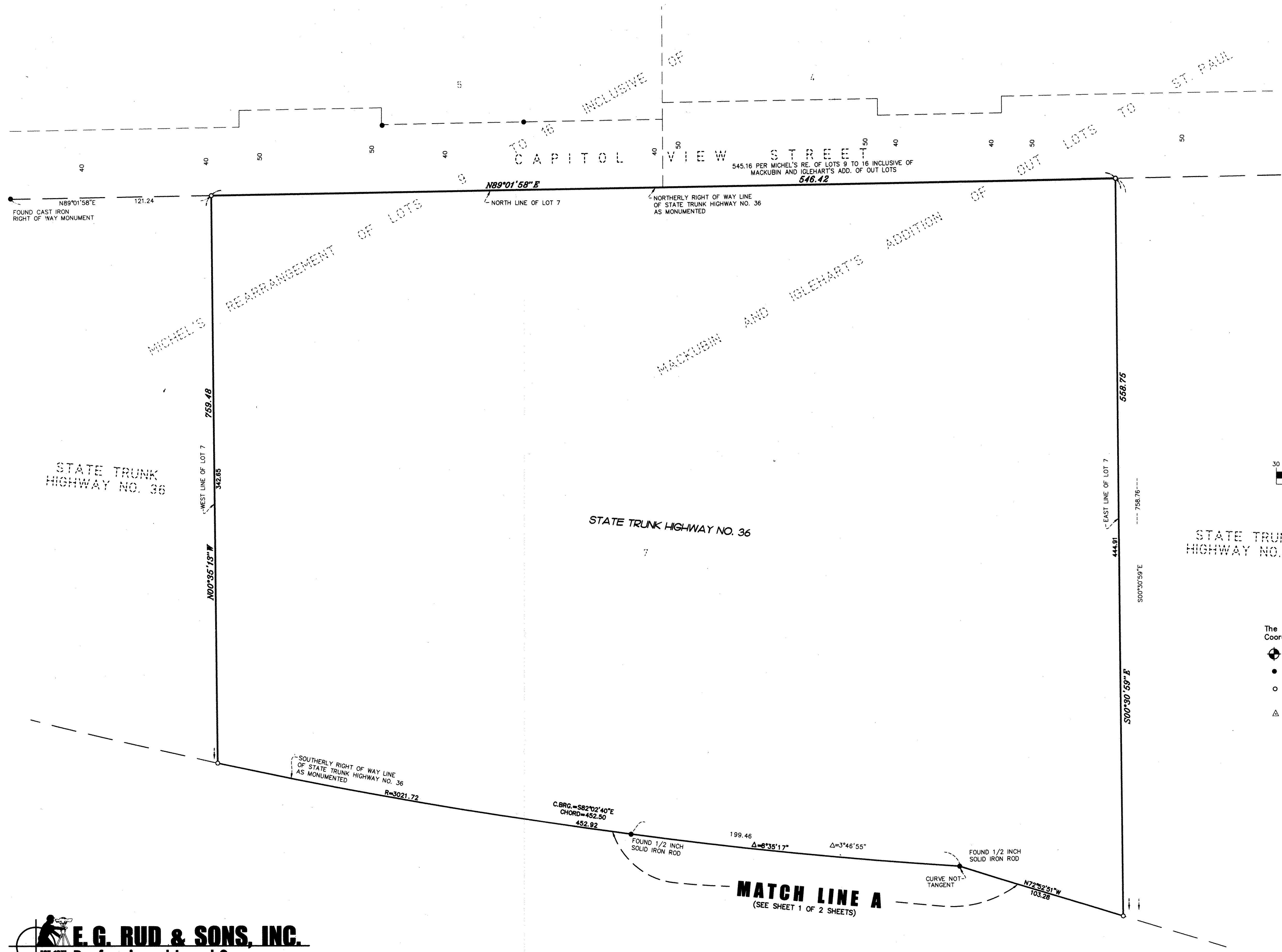
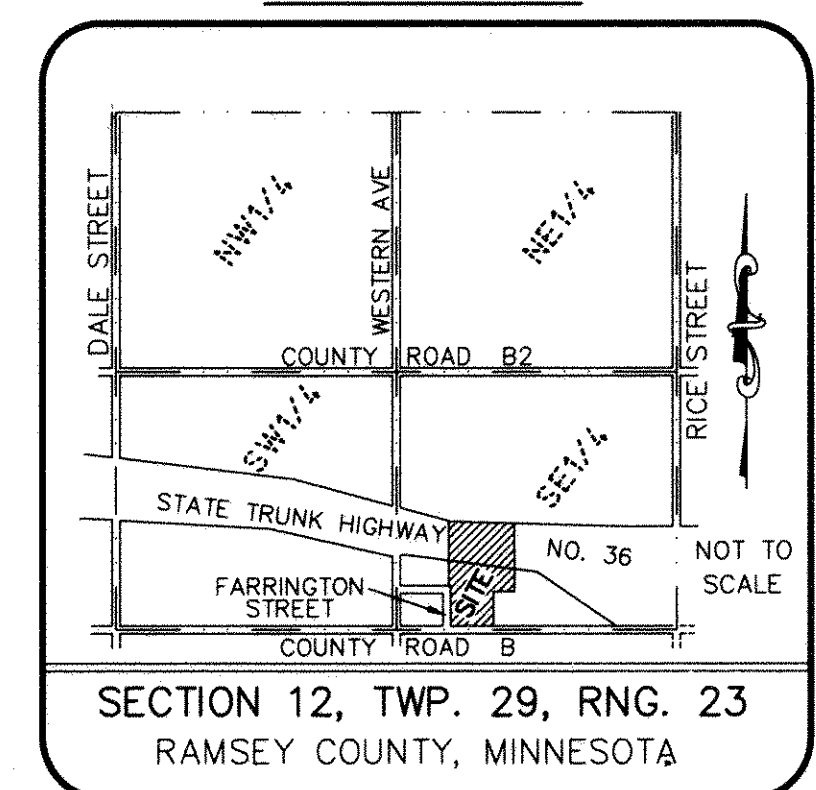


The orientation of this bearing system is based upon Ramsey County Coordinates, North American Datum of 1983, 1986 adjustment.
● Denotes Ramsey County cast iron monument.
○ Denotes 1 inch open iron pipe found, unless otherwise shown.
○ Denotes 1/2 inch X 18 inch iron pipe set marked with a plastic cap inscribed "RLS 41578".
△ Denotes set PK nail with metal disk marked RLS 41578.
Any required interior monument location on this plat with no monument symbol shown, indicates an interior plat monument that will be set, and which shall be in place within one year after the recording of this plat. Said monuments will be 1/2 inch X 18 inch iron pipe set marked with a plastic cap inscribed "RLS 41578".



FARRINGTON ESTATES

VICINITY MAP



- The orientation of this bearing system is based upon Ramsey County Coordinates, North American Datum of 1983, 1986 adjustment.
- ⊕ Denotes Ramsey County cast iron monument.
 - Denotes 1 inch open iron pipe found, unless otherwise shown.
 - Denotes 1/2 inch X 18 inch iron pipe set marked with a plastic cap inscribed "RLS 41578".
 - △ Denotes set PK nail with metal disk marked RLS 41578.