

TWIN LAKES HOSPITALITY PLACE

KNOW ALL PERSONS BY THESE PRESENTS: That HR, L.L.C., a Minnesota limited liability company, owner of the following described property situated in the City of Roseville, County of Ramsey, State of Minnesota:

Outlot A, Twin Lakes Addition according to the recorded plat thereof, Ramsey County, Minnesota. Has caused the same to be surveyed and platted as TWIN LAKES HOSPITALITY PLACE.

In witness whereof, said HR, L.L.C., a Minnesota limited liability company, has caused these presents to be signed by its proper officer this 11th day of March, 2015.

SIGNED: HR, L.L.C.

Kathy A. Amot AIF
Kathy A. Amot, Attorney-in-Fact for
Thomas R. Torgerson, President

STATE OF Minnesota
COUNTY OF Pennepin

This instrument was acd
HR, L.L.C., a Minnesota

Arch, 2015 by Kathy A. Amot, Attorney-in-Fact for Thomas R. Torgerson, President of pany.

Wendy F. Eichen
Notary Public,
My commission expires Jan. 31, 2020

I, Charles R. Christopherson, Licensed Land Surveyor in the State of Minnesota; that this plat monuments depicted on the date of this certificate at

ed by me or under my direct supervision; that I am a duly Licensed Land Surveyor in the State of irvey; that all mathematical data and labels are correctly designated on this plat; that all r boundaries and wet lands, as defined in Minnesota Statutes, Section 505.01, Subd. 3, as of the ic ways are shown and labeled on this plat.

Dated this 10th day of March, 2015.

Charles R. Christopherson
Charles R. Christopherson, Licensed Land Surveyor
Minnesota License No. 18420

STATE OF MINNESOTA
COUNTY OF ANOKA

This instrument was acknowledged before me this 10th day of March, 2015 by Charles R. Christopherson, a Professional Land Surveyor.

Seth M. Monroe
Seth M. Monroe
Notary Public, Minnesota
My commission expires January 31, 2019

CITY OF ROSEVILLE

We do hereby certify that on the 12 day of March, 2015, the City Council of the City of Roseville, Minnesota, approved this plat. Also, the conditions of Minnesota Statutes, Section 505.03, Subd. 2, have been fulfilled.

[Signature] Mayor [Signature] Clerk

DEPARTMENT OF PROPERTY RECORDS AND REVENUE

Pursuant to Minnesota Statutes, Section 505.021, Subd. 9, taxes payable in the year 2015 on the land hereinbefore described have been paid. Also pursuant to Minnesota Statutes, Section 272.12, there are no delinquent taxes and transfer entered this 23rd day of March, 2015

Mark Oswald, Director
Department of Property Records and Revenue
By: Mary Kay Stimp, Deputy

COUNTY SURVEYOR

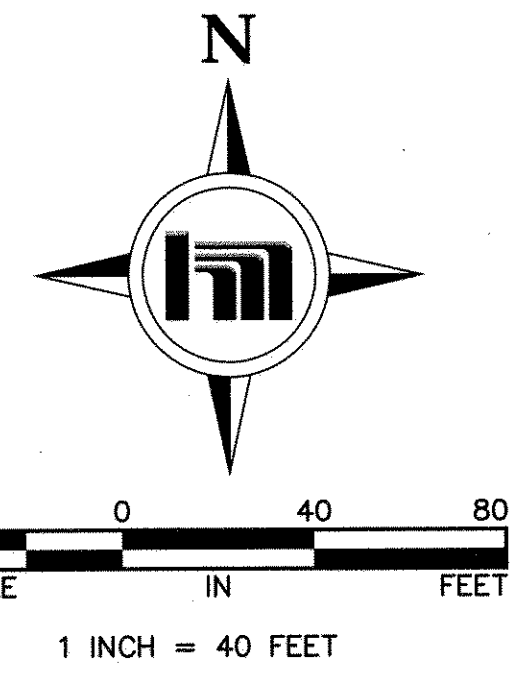
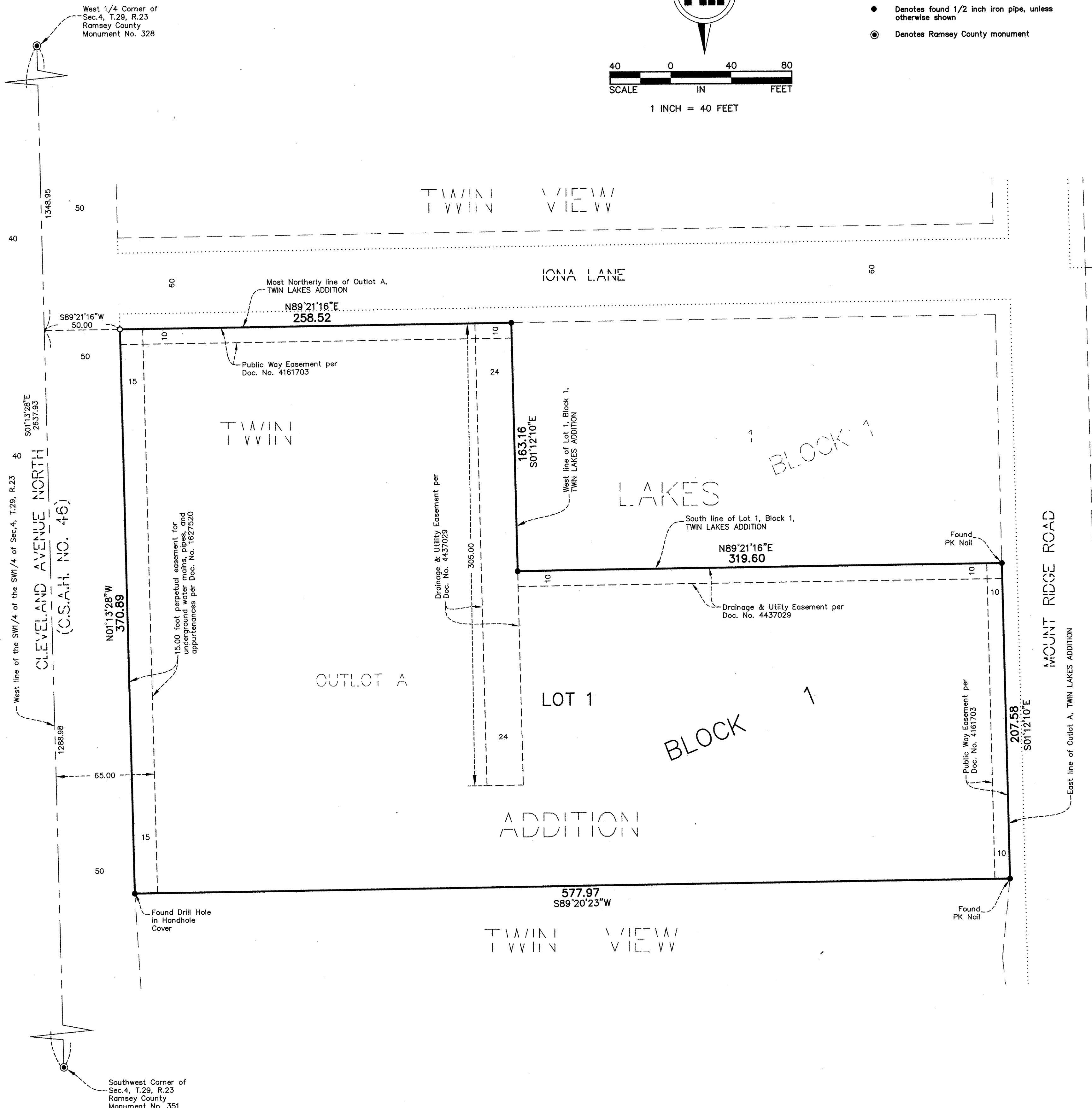
I hereby certify that this plat complies with the requirements of Minnesota Statutes, Section 505.021, and is approved pursuant to Minnesota Statutes, Section 383A.42, this 23rd day of March, 2015.

Craig W. Hipzman
Craig W. Hipzman, L.S.
Ramsey County Surveyor

County Recorder, County of Ramsey, State of Minnesota

I hereby certify that this plat of TWIN LAKES HOSPITALITY PLACE was filed in the office of the County Recorder for public record on the 23 day of March, 2015, at 3 o'clock P.M. and was duly filed in Book 126 of Plats, Page 46, as Document Number 4548685.

Deputy County Recorder



For the purposes of this plat the most Northerly line of Outlot A, TWIN LAKES ADDITION is assumed to bear N89°21'16"E.

- Denotes 1/2 inch by 14 inch iron monument set and marked with Minnesota License No. 18420.
- Denotes found 1/2 inch iron pipe, unless otherwise shown
- ⊙ Denotes Ramsey County monument