

# THE CATHOLIC COMMUNITY OF ST. ODILIA

KNOW ALL MEN BY THESE PRESENTS: That The Church of St. Odilia of Shoreview, Minnesota, a Minnesota parish coporation, fee owner of the following described property situated in the City of Shoreview, County of Ramsey, State of Minnesota:

Lot 2, Block 1, ST. ODILIA CAMPUS and Lot 1, Block 1, ST. ODILIA CAMPUS, together with the East 30.00 feet of Vivian Avenue, according to the recorded plat of said ST. ODILIA CAMPUS, as vacated;

AND

That part of Lot 10, lying South of the North 60 feet thereof, and Lots 11, 12, 13, 14 and 15, all in Block 1, MINNESOTA REALTY HOMESITES;

AND

The North one-half of vacated Cottage Place, formerly Harriet Avenue according to the recorded plat of said MINNESOTA REALTY HOMESITES, lying East of Vivian Avenue and lying West of the Northerly extension of the West line of Lot 6, Block 2, of said MINNESOTA REALTY HOMESITES.

Has caused the same to be surveyed and platted as THE CATHOLIC COMMUNITY OF ST. ODILIA and does hereby dedicate to the public for public use forever the drainage and utility easements as shown on this plat.

In witness whereof said The Church of St. Odilia of Shoreview, Minnesota, a Minnesota parish coporation, has caused these presents to be signed by its proper officers this 17<sup>th</sup> day of June, 2014.

Phillip J. Rask  
Phillip J. Rask, Vice President

Kathryn Boyle  
Kathryn Boyle, Secretary

STATE OF MINNESOTA  
COUNTY OF Ramsey

The foregoing instrument was acknowledged before me this 17 day of June, 2014, by Phillip J. Rask, Vice President and Kathryn Boyle, Secretary, of The Church of St. Odilia of Shoreview, Minnesota, a Minnesota parish coporation, on behalf of the coporation.

Barbara Ann Schaefer-Mady  
Barbara Ann Schaefer-Mady  
Notary Public, Ramsey County, Minnesota  
My Commission Expires 1-31-2017

I, James E. Napier, Licensed Land Surveyor, do hereby certify that I have surveyed or directly supervised the survey of the property described on this plat; prepared this plat or directly supervised the preparation of this plat; that this plat is a correct representation of the boundary survey; that all mathematical data and labels are correctly designated on this plat; that all monuments depicted on this plat have been correctly set; that all water boundaries and wet lands, as defined in Minnesota Statutes, Section 505.01, Subd. 3, as of the date of the surveyor's certification are shown and labeled on this plat; and all public ways are shown and labeled on this plat.

Dated this 13<sup>th</sup> day of June, 2014.  
James E. Napier  
James E. Napier, Land Surveyor  
Minnesota License No. 25343

STATE OF MINNESOTA  
COUNTY OF Anoka

The foregoing Surveyor's Certificate was acknowledged before me this 13<sup>th</sup> day of June, 2014, by James E. Napier, a Licensed Land Surveyor.

Nicole A. Johnson  
Nicole A. Johnson  
Notary Public, Anoka County, Minnesota  
My Commission Expires Jan 21, 2015

CITY OF SHOREVIEW

We do hereby certify that on the 7<sup>th</sup> day of April, 2014, the City Council of the City of Shoreview, Minnesota, approved this plat. Also, the conditions of Minnesota Statutes, Section 505.03, Subd. 2, have been fulfilled.

Sandra Martin, Mayor TJCS, City Clerk

DEPARTMENT OF PROPERTY RECORDS AND REVENUE

Pursuant to Minnesota Statutes, Section 505.021, Subd. 9, taxes payable in the year 2014 on the land hereinbefore described have been paid. Also, pursuant to Minnesota Statutes, Section 272.12, there are no delinquent taxes and transfer entered this 17<sup>th</sup> day of Aug, 2014.

Mark Oswald, Director By [Signature], Deputy  
Property Records and Revenue

COUNTY SURVEYOR

I hereby certify that this plat complies with the requirements of Minnesota Statutes, Section 505.021, and is approved pursuant to Minnesota Statutes, Section 383A.42, this 11<sup>th</sup> day of AUGUST, 2014.

Craig W. Hinzman  
Craig W. Hinzman, L.S.  
Ramsey County Surveyor

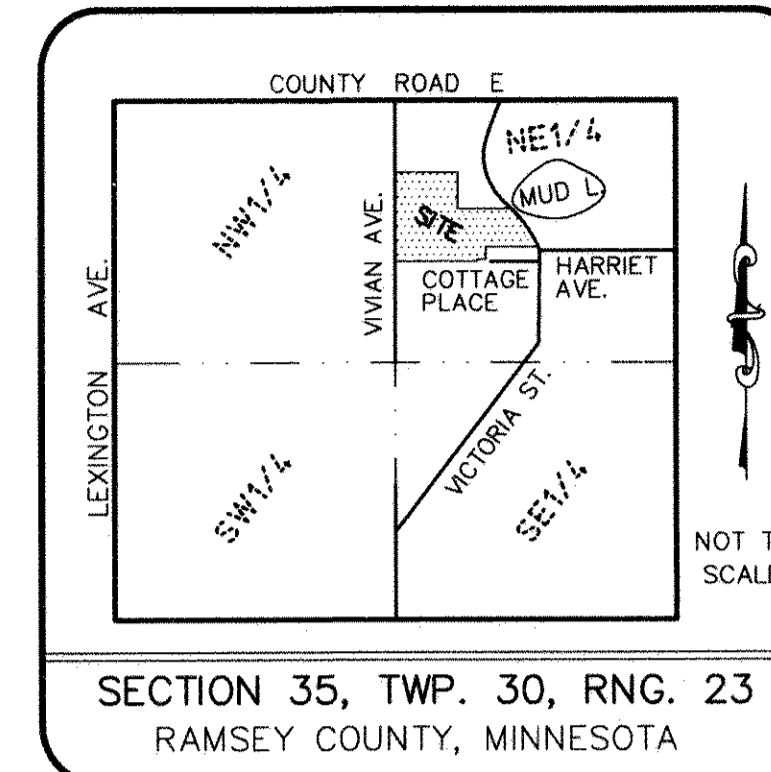
COUNTY RECORDER,  
COUNTY OF RAMSEY, STATE OF MINNESOTA

I hereby certify that this plat of THE CATHOLIC COMMUNITY OF ST. ODILIA was filed in the office of the County Recorder for public record on this 16<sup>th</sup> day of SEPTEMBER, 2014, at 12 o'clock P.M., and was duly filed in Book 126 of Plats, Pages 27 and 28, as Document Number 004525145.

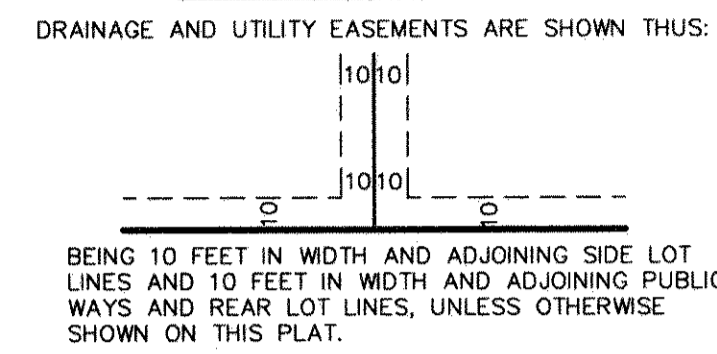
Deputy County Recorder

# THE CATHOLIC COMMUNITY OF ST. ODILIA

### VICINITY MAP

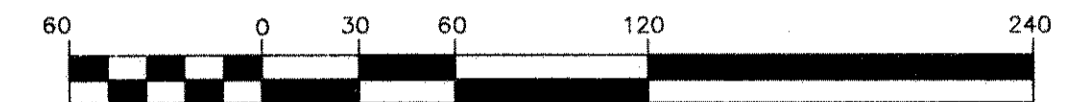


### EASEMENT DETAIL



NORTH

GRAPHIC SCALE IN FEET

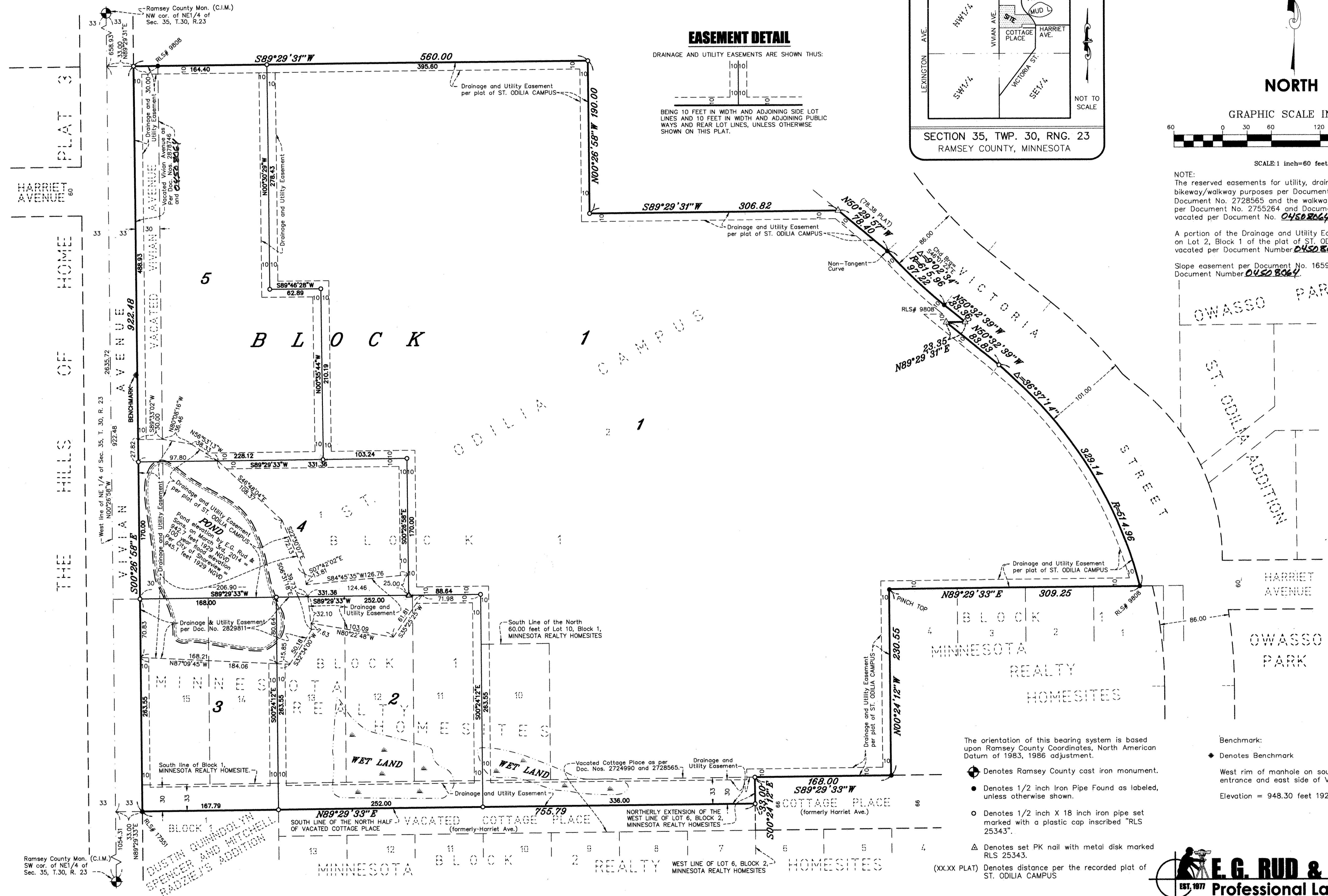


SCALE: 1 inch=60 feet

NOTE:  
The reserved easements for utility, drainage and bikeway/walkway purposes per Document No. 2724990 and Document No. 2728565 and the walkway/bikeway easements per Document No. 2755264 and Document No. 2756265 are vacated per Document No. 04508064.

A portion of the Drainage and Utility Easement as dedicated on Lot 2, Block 1 of the plat of ST. ODILIA CAMPUS was vacated per Document Number 04508064.

Slope easement per Document No. 1659115 was vacated per Document Number 04508064.



The orientation of this bearing system is based upon Ramsey County Coordinates, North American Datum of 1983, 1986 adjustment.

- ◆ Denotes Ramsey County cast iron monument.
- Denotes 1/2 inch Iron Pipe Found as labeled, unless otherwise shown.
- Denotes 1/2 inch X 18 inch iron pipe set marked with a plastic cap inscribed "RLS 25343".
- △ Denotes set PK nail with metal disk marked RLS 25343.
- (XX.XX PLAT) Denotes distance per the recorded plat of ST. ODILIA CAMPUS

Benchmark:

- ◆ Denotes Benchmark
- West rim of manhole on south side of Church's entrance and east side of Vivian Avenue
- Elevation = 948.30 feet 1929 NGVD

**E. G. RUD & SONS, INC.**  
Professional Land Surveyors  
EST. 1977