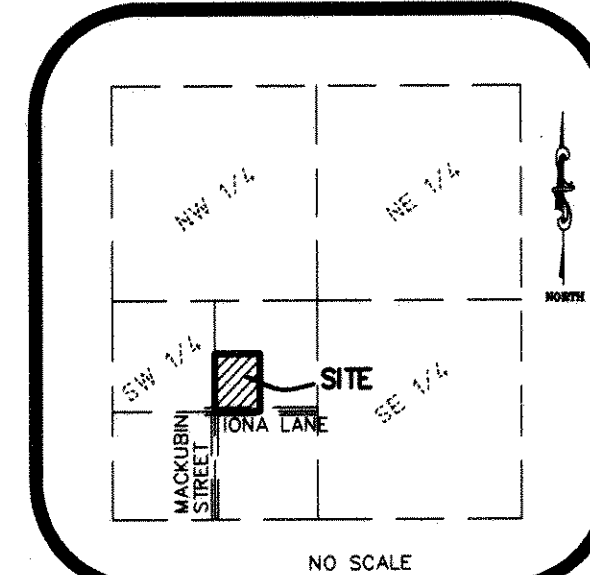


OWASSO RIDGE SECOND ADDITION

VICINITY MAP
SECTION 1, TOWNSHIP 29, RANGE 23



KNOW ALL MEN BY THESE PRESENTS: That Owasso Ridge Association, Inc., a Minnesota corporation, owner of the following described property situated in the City of Roseville, County of Ramsey, State of Minnesota:

Lot 8, Block 1, OWASSO RIDGE, Ramsey County, Minnesota.

Has caused the same to be surveyed and platted as OWASSO RIDGE SECOND ADDITION and does hereby dedicate to the public for public use forever the drainage and utility easements as shown on this plat.

In witness whereof said Owasso Ridge Association, Inc., a Minnesota corporation, has caused these presents to be signed by its proper officer this 16th day of February, 2010.

Signed: Owasso Ridge Association, Inc.

John Scheller
John Scheller, President

STATE OF MINNESOTA
COUNTY OF Ramsey

The foregoing instrument was acknowledged before me this 18th day of February, 2010, by John Scheller, as President of Owasso Ridge Association, Inc., a Minnesota corporation, on behalf of the corporation.

Debbie L. Munich
Debbie L. Munich

Notary Public, Ramsey County, Minnesota
My Commission Expires Nov 31, 2014

I, John A. Rengo, Licensed Land Surveyor, do hereby certify that I have surveyed or directly supervised the survey of the property described on this plat; prepared this plat or directly supervised the preparation of this plat; that this plat is a correct representation of the boundary survey; that all mathematical data and labels are correctly designated on this plat; that all monuments depicted on this plat have been correctly set; that all water boundaries and wet lands, as defined in Minnesota Statutes, Section 505.01, Subd. 3, as of the date of the surveyor's certification are shown and labeled on this plat; and all public ways are shown and labeled on this plat.

Dated this 16th day of February, 2010.

John A. Rengo
John A. Rengo, Land Surveyor
Minnesota License No. 25344

STATE OF MINNESOTA
COUNTY OF Ramsey

The foregoing Surveyor's Certificate was acknowledged before me this 16th day of February, 2010, by John A. Rengo, a Licensed Land Surveyor.

Debbie L. Munich
Debbie L. Munich

Notary Public, Ramsey County, Minnesota
My Commission Expires Nov 31, 2014

City of Roseville
We do hereby certify that on the 31st day of September, 2009, the City Council of the City of Roseville, Minnesota, approved this plat. Also, the conditions of Minnesota Statutes, Section 505.03, Subd. 2, have been fulfilled.

Craig A. Kowung Mayor *Wymalinen* City Clerk

Department of Property Records and Revenue
Pursuant to Minnesota Statutes, Section 505.021, Subd. 9, taxes payable in the year 2010 on the land hereinbefore described have been paid. Also, pursuant to Minnesota Statutes, Section 272.12, there are no delinquent taxes and transfer entered this 10th day of March, 2010.

Mark O'Connell Director By *Mary Kay Dempsey* Deputy
Property Records and Revenue

County Surveyor
I hereby certify that this plat complies with the requirements of Minnesota Statutes, Section 505.021, and is approved pursuant to Minnesota Statutes, Section 383A.42, this 15 day of March, 2010.

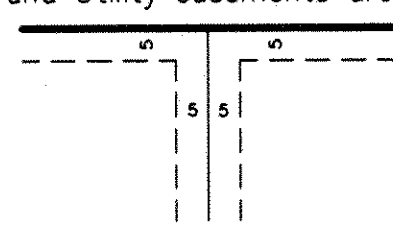
Michael D. Fiebigler
Michael D. Fiebigler, P.L.S.
Ramsey County Surveyor

Registrar of Titles
County of Ramsey, State of Minnesota
I hereby certify that this plat of OWASSO RIDGE SECOND ADDITION was filed in the office of the Registrar of Titles for public record on this 15th day of March, 2010 at 4 o'clock P.M., and was duly filed in Book 47 of Plats, Page 46 as Document Number 2123890.

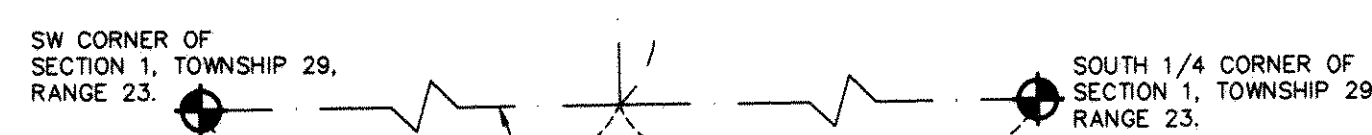
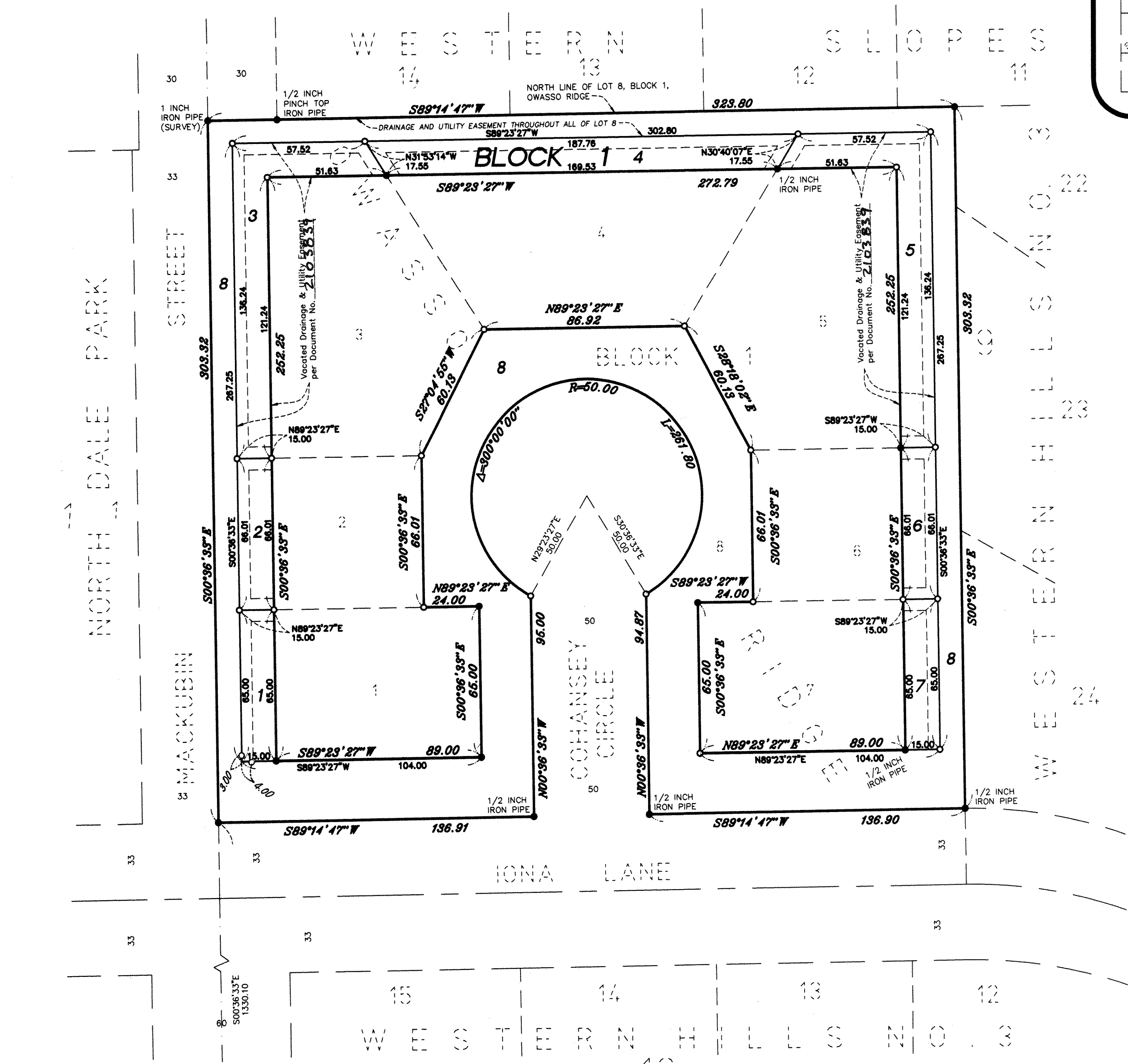
Deputy Registrar of Titles

EASEMENT DETAIL:

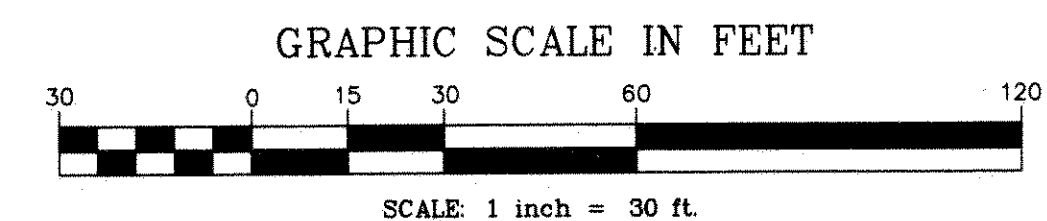
Drainage and Utility easements are shown thus:



Being 5 feet in width and adjoining all side and rear lot lines unless otherwise indicated on this plat.



- DENOTES 1/2 INCH IRON PIPE FOUND, MARKED RLS NO. 41578 (UNLESS OTHERWISE NOTED)
 - DENOTES 1/2 INCH BY 18 INCH IRON PIPE SET, MARKED RLS NO. 25344
 - ⊕ DENOTES RAMSEY COUNTY CAST IRON MONUMENT (SURVEY)
- PER PLAT OF SURVEY BY T.J. WELCH DATED MARCH 29, 1954. FOUND IN DISTRICT COUT FILE NUMBER 7884.



SCALE: 1 inch = 30 ft.

NORTH

