

ARCADE ESTATES WEST

KNOW ALL MEN BY THESE PRESENTS: That Goff Homes, Inc., a Minnesota Corporation, owner, and Wells Fargo Bank, N.A., a national bank, mortgagee, of the following described property situated in the City of Vadnaia Heights, County of Ramsey, State of Minnesota:

That part of the North Half of the South Half of the Northwest Quarter of Section 33, Township 30 N, Range 22 W, lying westerly of the center line of the Arcade Street Easement (Document No. 2976205).
Have caused the same to be surveyed and platted as ARCADE ESTATES WEST and do hereby dedicate or donate to the public for public use forever the public ways and drainage and utility easement as shown on this plat.
In witness whereof said Goff Homes, Inc., a Minnesota Corporation, has caused these presents to be signed by its proper officers this 23 day of December, 2009.

Signed: Goff Homes, Inc.
Patrick W. Goff, President
Carol E. Goff, Vice President

STATE OF MINNESOTA
COUNTY OF Ramsey
The foregoing instrument was acknowledged before me this 23 day of December, 2009, by Patrick W. Goff, President, and Carol E. Goff, Vice President, of Goff Homes, Inc., a Minnesota Corporation, on behalf of the corporation.

E. Goff Peterson
Notary Public, Ramsey County, Minnesota
My Commission Expires January 31, 2010

In witness whereof said Wells Fargo Bank, N.A., a national bank, has caused these presents to be signed by its proper officer this 30 day of November, 2009.

Signed: Wells Fargo Bank, N.A.
Janet R. Piper, its Assistant Vice President

STATE OF MINNESOTA
COUNTY OF Hennepin
The foregoing instrument was acknowledged before me this 30 day of November, 2009, by Janet R. Piper, Assistant Vice President of Wells Fargo Bank, N.A., a national bank, on behalf of the national bank.

Jennifer L. Nygren
Notary Public, Hennepin County, Minnesota
My Commission Expires Jan 31, 2011

I, Jonathan L. Faraci, Professional Land Surveyor, do hereby certify that I have surveyed or directly supervised the survey of the property described on this plat; prepared this plat or directly supervised the preparation of this plat; that this plat is a correct representation of the boundary survey; that all mathematical data and labels are correctly designated on this plat; that all monuments depicted on this plat have been correctly set; that all monuments indicated on this plat will be correctly set within one year; that all water boundaries and wet lands, as defined in Minnesota Statutes, Section 505.01, Subd. 3, as of the date of the surveyor's certification are shown and labeled on this plat; and all public ways are shown and labeled on this plat.
Dated this 30 day of November, 2009.

Jonathan L. Faraci
Jonathan L. Faraci, Professional Land Surveyor
Minnesota License No. 16464

STATE OF MINNESOTA
COUNTY OF RAMSEY
The foregoing Surveyor's Certificate was acknowledged before me this 30 day of November, 2009, by Jonathan L. Faraci, a Licensed Land Surveyor.

Alan F. Musielewicz
Notary Public, Ramsey County, Minnesota
My Commission Expires Jan 31, 2010

City of Vadnaia Heights
We do hereby certify that on the 15 day of October, 2009, the City Council of the City of Vadnaia Heights, Minnesota, approved this plat. Also, the conditions of Minnesota Statutes, Section 505.03, Subd. 2, have been fulfilled.

Herald Gluban
Mayor
Herald Gluban
City Clerk

Department of Property Records and Revenue
Pursuant to Minnesota Statutes, Section 505.021, Subd. 9, taxes payable in the year 2009 on the land hereinbefore described have been paid. Also, pursuant to Minnesota Statutes, Section 272.12, there are no delinquent taxes and transfer entered this 29 day of December, 2009.

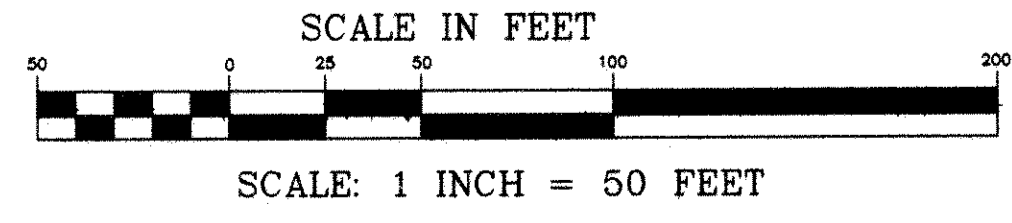
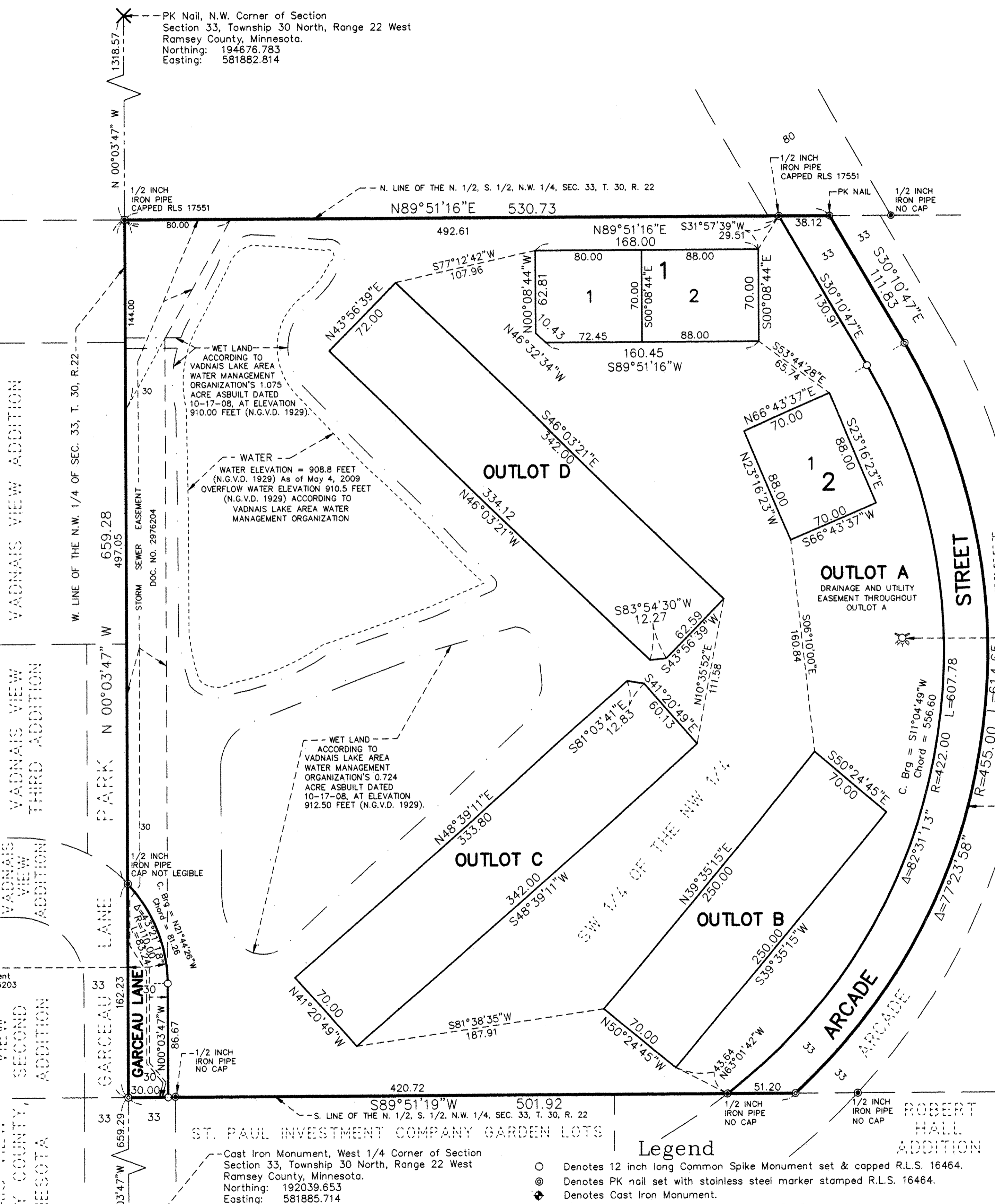
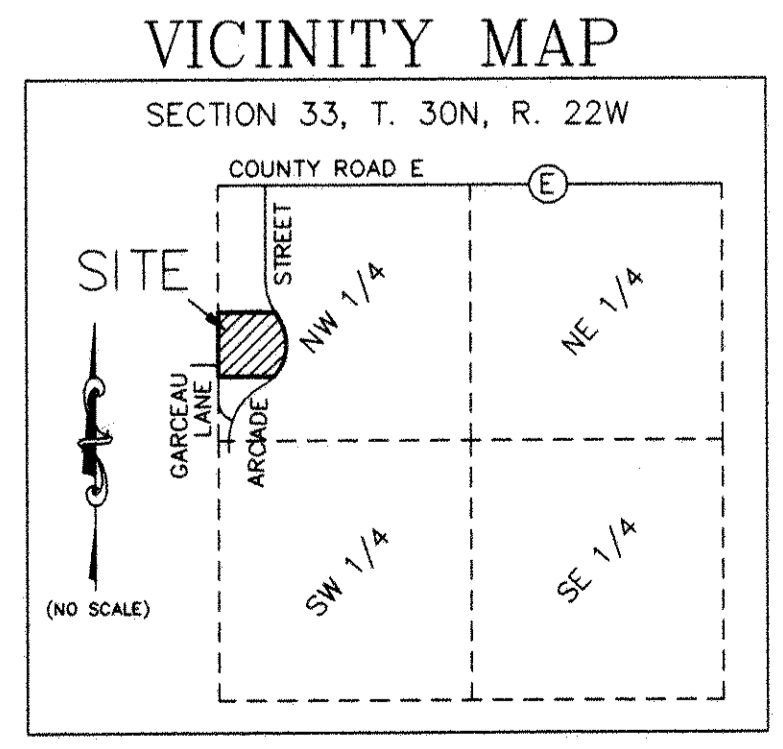
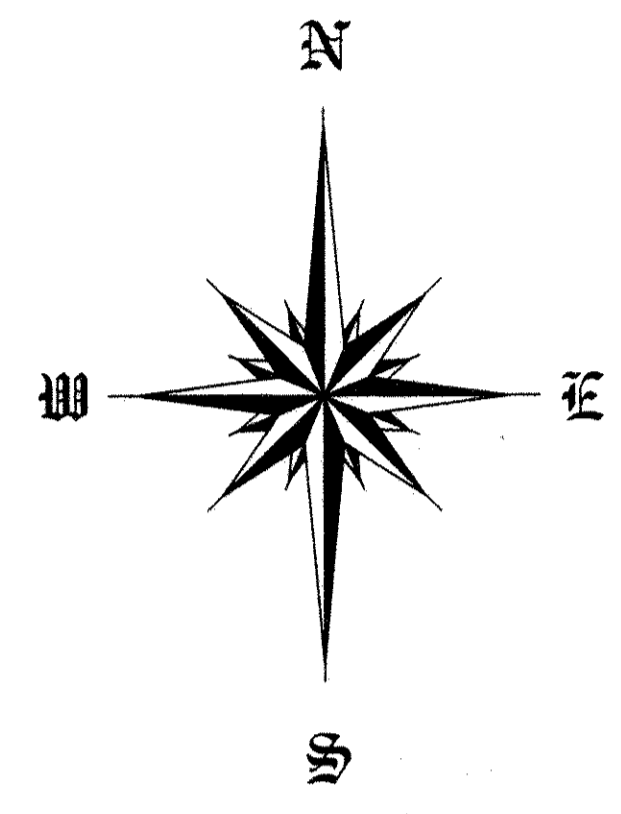
Mark Oswald, Director
Department of Property Records and Revenue
By Mary Kay Jensen, Deputy

County Surveyor
I hereby certify that this plat complies with the requirements of Minnesota Statutes, Section 505.021, and is approved pursuant to Minnesota Statutes, Section 383A.42, this 29 day of December, 2009.

Michael D. Fiebigler
Michael D. Fiebigler, P.L.S.
Ramsey County Surveyor

County Recorder, County of Ramsey, State of Minnesota
I hereby certify that this plat of ARCADE ESTATES WEST was filed in the office of the County Recorder for public record on this 29 day of December, 2009, at 4 o'clock P.M. and was duly filed in Book 124 of Plats, Page 16, as Document Number 4201776.

Deputy County Recorder



Legend
○ Denotes 12 inch long Common Spike Monument set & capped R.L.S. 16464.
⊙ Denotes PK nail set with stainless steel marker stamped R.L.S. 16464.
⊕ Denotes Cast Iron Monument.
⊙ Denotes Iron Pipe found, size, type, and R.L.S. as noted.
Any required interior monument location on this plat with no monument symbol shown, indicates a plat monument that will be set, and which shall be in place within one year after the recording of this plat. These monuments will be 12 inch long Common Spike Monuments set & capped R.L.S. 16464.
BASIS OF BEARINGS: RAMSEY COUNTY COORDINATE SYSTEM, NAD83, 1986 ADJUSTMENT. COORDINATES SHOWN ARE RAMSEY COUNTY COORDINATES, NAD83, 1986 ADJUSTMENT.

LAKE & LAND SURVEYING, INC.
1296 HUDSON ROAD
SAINT PAUL, MINNESOTA 55106
PHONE: 651-776-6211

ROADWAY AND UTILITY EASEMENT
DOC. NO. 2976203

VADNAIA VIEW ADDITION
VADNAIA VIEW THIRD ADDITION
VADNAIA VIEW ADDITION
VADNAIA VIEW SECOND ADDITION
ROBERTS VADNAIA VIEW
RAMSEY COUNTY, MINNESOTA

PK Nail, N.W. Corner of Section
Section 33, Township 30 North, Range 22 West
Ramsey County, Minnesota.
Northing: 194676.783
Easting: 581882.814

WET LAND - ACCORDING TO VADNAIA LAKE AREA WATER MANAGEMENT ORGANIZATION'S 1.075 ACRE ASBUILT DATED 10-17-08, AT ELEVATION 910.00 FEET (N.G.V.D. 1929).

WET LAND - ACCORDING TO VADNAIA LAKE AREA WATER MANAGEMENT ORGANIZATION'S 0.724 ACRE ASBUILT DATED 10-17-08, AT ELEVATION 912.50 FEET (N.G.V.D. 1929).

WATER ELEVATION = 908.8 FEET (N.G.V.D. 1929) AS OF MAY 4, 2009
OVERFLOW WATER ELEVATION 910.5 FEET (N.G.V.D. 1929) ACCORDING TO VADNAIA LAKE AREA WATER MANAGEMENT ORGANIZATION

ST. PAUL INVESTMENT COMPANY GARDEN LOTS

ROBERT HALL ADDITION

ARCADIE STREET

GARCEAU LANE

PARK N 00°03'47\"/>

ARCADIE STREET

ARCADIE STREET

ARCADIE STREET

ARCADIE STREET

ARCADIE STREET

ARCADIE STREET

ARCADIE STREET

ARCADIE STREET

ARCADIE STREET

ARCADIE STREET

ARCADIE STREET

ARCADIE STREET

ARCADIE STREET

ARCADIE STREET

ARCADIE STREET

ARCADIE STREET

ARCADIE STREET

ARCADIE STREET

ARCADIE STREET

ARCADIE STREET