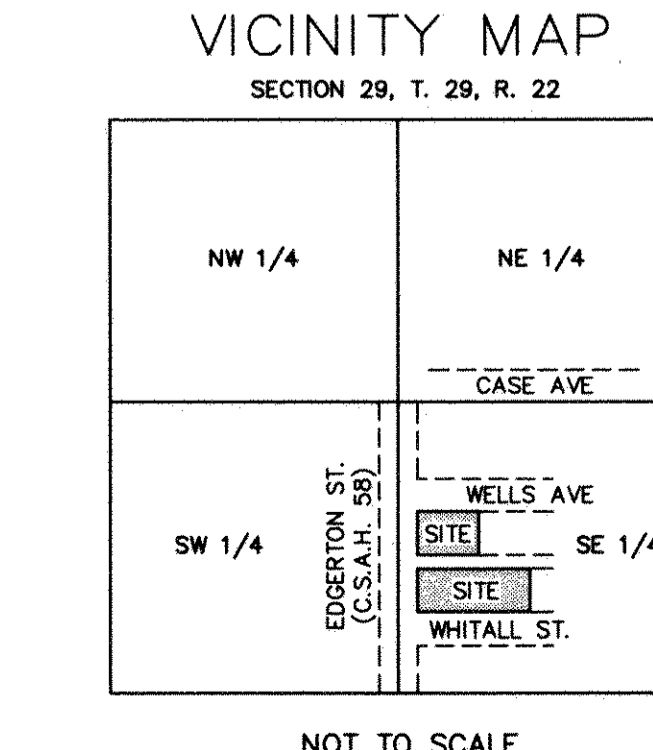
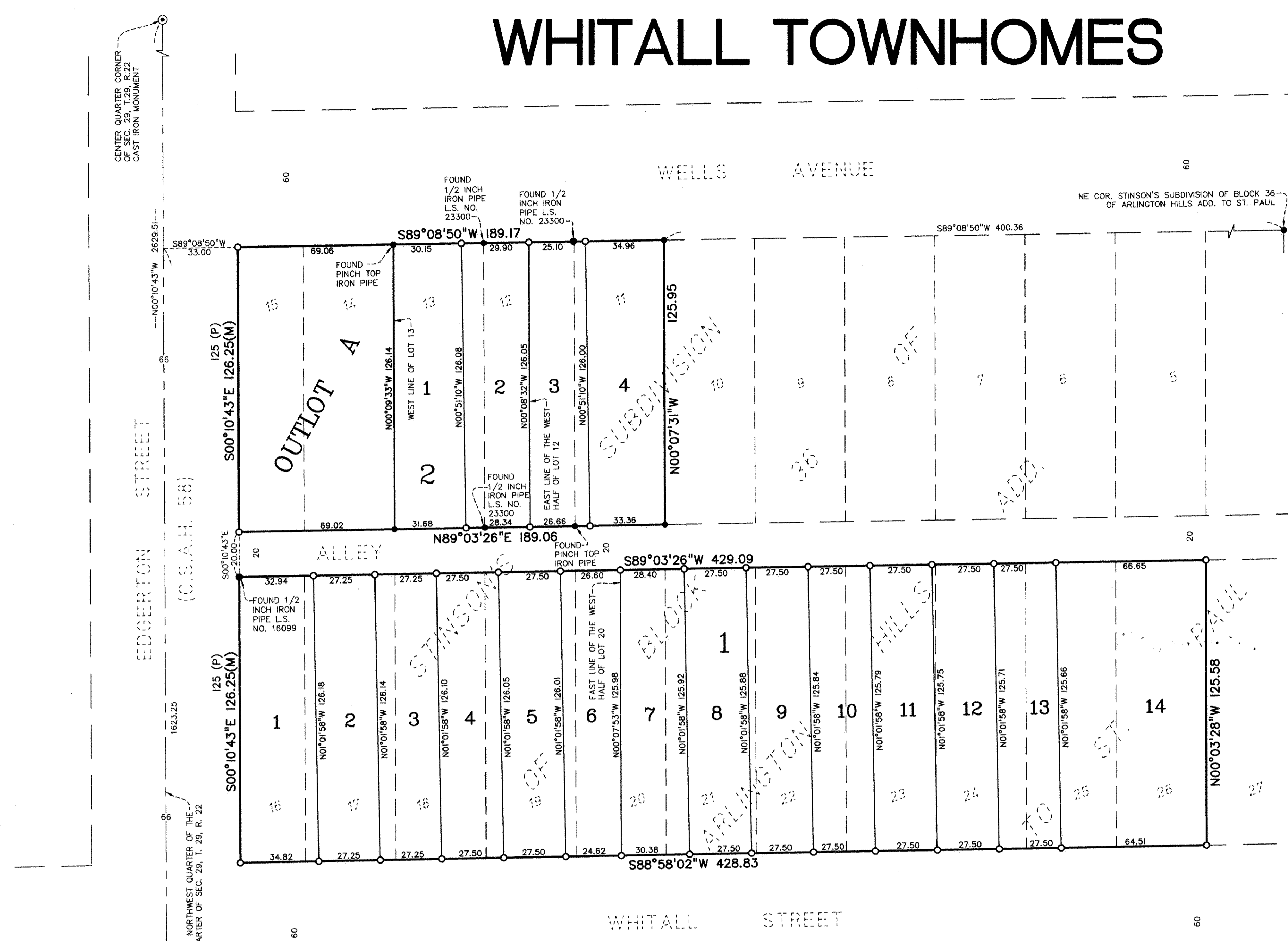


# WHITALL TOWNHOMES

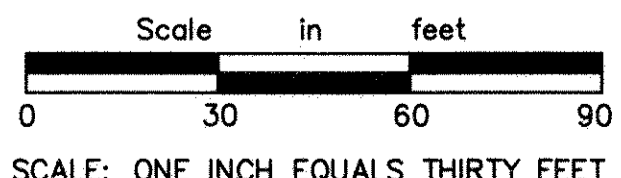


THE WEST LINE OF THE SOUTHEAST QUARTER OF SECTION 29, TOWNSHIP 29 NORTH, RANGE 22 WEST, IS ASSUMED TO HAVE A BEARING OF N00°10'43"W.

**LEGEND**

- Denotes 1/2 inch x 18 inch iron pipe set marked by license no. 18425
- Denotes found 1/2 inch iron pipe monument, unless otherwise shown
- (M) Denotes Measured Distance
- (P) Denotes Plat Distance

PLAT—REFERS TO DIMENSIONS AS SHOWN ON THE PLAT OF STINSON'S SUBDIVISION OF BLOCK 36 OF ARLINGTON HILLS ADD. TO ST. PAUL, RECORDED IN THE OFFICE OF THE COUNTY RECORDER



KNOW ALL MEN BY THESE PRESENTS: That Whitall Townhomes, LLC, a Minnesota limited liability company, owner of the following described property situated in the City of Saint Paul, County of Ramsey, State of Minnesota:

Lot 11, the East Half of Lot 12, Lots 14 and 15, the East Half of Lot 20, Lots 21 to 26, inclusive, Stinson's Subdivision of Block 36 of Arlington Hills Add. to St. Paul, according to the recorded plat thereof, Ramsey County, Minnesota; Together with, the West Half of Lot 12, Lot 13, Lots 16 to 19, inclusive, the West Half of Lot 20, Stinson's Subdivision of Block 36 of Arlington Hills Add. to St. Paul, according to the recorded plat thereof, Ramsey County, Minnesota.

Has caused the same to be surveyed and platted as WHITALL TOWNHOMES.  
In witness whereof said Whitall Townhomes, LLC, a Minnesota limited liability company, has caused these presents to be signed by its proper officer this 30 day of August, 2008.  
Signed: Whitall Townhomes, LLC

George E. Sherman Chief Manager  
George E. Sherman

STATE OF MINNESOTA  
COUNTY OF RAMSEY  
The foregoing instrument was acknowledged before me on this 30 day of August, 2008, by George E. Sherman, the Chief Manager of Whitall Townhomes, LLC, a Minnesota limited liability company, on behalf of the company.

Paula K. Beck  
Notary Public  
Minnesota  
My Commission Expires January 31, 2010

Notary Public, RAMSEY County, Minnesota  
My Commission Expires January 31, 2010

I, Dennis B. Olmstead, Professional Land Surveyor, do hereby certify that I have surveyed or directly supervised the survey of the property described on this plat; prepared this plat or directly supervised the preparation of this plat; that this plat is a correct representation of the boundary survey, that all mathematical data and labels are correctly designated on this plat; that all monuments depicted on this plat have been correctly set; that all water boundaries and wet lands, as defined in Minnesota Statutes, Section 505.01, Subd. 3, as of the date of the surveyor's certification are shown and labeled on this plat; and all public ways are shown and labeled on this plat.

Dated this 24<sup>th</sup> day of June, 2008

Dennis B. Olmstead  
Dennis B. Olmstead, Professional Land Surveyor  
Minnesota License No. 18425

STATE OF MINNESOTA  
COUNTY OF RAMSEY  
The foregoing Surveyor's Certificate was acknowledged before me this 24<sup>th</sup> day of June, 2008 by Dennis B. Olmstead, a Licensed Land Surveyor.

Troy D. Schrag  
Notary Public, RAMSEY County, Minnesota  
My Commission Expires January 31, 2010

City of Saint Paul  
I do hereby certify that on the 9 day of July, 2008, the City Council of the City of Saint Paul, Minnesota, approved this plat. Also, the conditions of Minnesota Statutes, Section 505.03, Subd. 2, have been fulfilled.

Shari Moore Clerk

Department of Property Records and Revenue  
Pursuant to Minnesota Statutes, Section 505.021, Subd. 9, taxes payable in the year 2008 on the land hereinbefore described have been paid. Also, pursuant to Minnesota Statutes, Section 272.12, there are no delinquent taxes and transfer entered this 14<sup>th</sup> day of Sept, 2008.

Mark E. Oswald Director  
Department of Property Records and Revenue

By Duane Xiong Deputy  
County Surveyor

I hereby certify that this plat complies with the requirements of Minnesota Statutes, Section 505.021, and is approved pursuant to Minnesota Statutes, Section 383A.42, this 22 day of September, 2008.

By Michael D. Ferguson Deputy  
David D Claypool, P.L.S.  
Ramsey County Surveyor

Registrar of Titles, County of Ramsey, State of Minnesota  
I hereby certify that this plat of WHITALL TOWNHOMES was filed in the office of the Registrar of Titles for public record on this 22 day of September, 2008, at 3 o'clock P. M. and was duly filed in Book 47 of Plats, Page 41, as Document Number 4617711

Deputy Registrar of Titles

County Recorder, County of Ramsey, State of Minnesota  
I hereby certify that this plat of WHITALL TOWNHOMES was filed in the office of the County Recorder for public record on this 22 day of September, 2008, at 3 o'clock P. M. and was duly filed in Book 123 of Plats, Page 46, as Document Number 4617711

Deputy County Recorder

