

APPLEWOOD POINTE OF ARONA 3RD ADDITION

WEST 1/4 CORNER OF SECTION 3, TOWNSHIP 29, RANGE 23 (CAST IRON MONUMENT)
 NORTH LINE OF THE SW1/4 OF SECTION 3, TOWNSHIP 29, RANGE 23.
 CENTER OF SECTION 3, TOWNSHIP 29, RANGE 23 (CAST IRON MONUMENT)

KNOW ALL MEN BY THESE PRESENTS: That United Properties Residential L.L.C., a Minnesota Limited Liability Company, fee owner of the following described property situated in the City of Roseville, County of Ramsey, State of Minnesota:

OUTLOT A, APPLEWOOD POINTE OF ARONA 2ND ADDITION, Ramsey County, Minnesota;
 AND
 OUTLOT B, APPLEWOOD POINTE OF ARONA, Ramsey County, Minnesota.

Has caused the same to be surveyed and platted as APPLEWOOD POINTE OF ARONA 3RD ADDITION and does hereby dedicate to the public for public use forever the drainage and utility easement as shown on this plat.

In witness whereof said United Properties Residential L.L.C., a Minnesota Limited Liability Company, has caused these presents to be signed by its proper officer this _____ day of _____ 200__

Signed: United Properties Residential L.L.C.

Boyd B. Stofer
 Boyd B. Stofer, Chief Manager
 STATE OF MINNESOTA
 COUNTY OF RAMSEY

The foregoing instrument was acknowledged before me this 21st day of DECEMBER, 2004, by Boyd B. Stofer, Chief Manager of United Properties Residential L.L.C., a Minnesota Limited Liability Company, on behalf of the company.

Scott
 Notary Public, RAMSEY County, Minnesota
 My Commission Expires JAN. 31, 2005

I hereby certify that I have surveyed and platted the property described on this plat as APPLEWOOD POINTE OF ARONA 3RD ADDITION; that this plat is a correct representation of the survey; that all distances are correctly shown on the plat in feet and hundredths of a foot; that all monuments have been correctly placed in the ground as shown; that the outside boundary lines are correctly designated on the plat; and there are no wet lands as defined in Minnesota Statutes, Section 505.02, Subd. 1, or public highways to be designated other than as shown on this plat.

Jason E. Rud
 Jason E. Rud, Land Surveyor
 Minnesota License No. 41578

STATE OF MINNESOTA
 COUNTY OF HENNEPIN
 The foregoing Surveyor's Certificate was acknowledged before me this 17th day of December, 2004, by Jason E. Rud, a Licensed Land Surveyor

Bridget C. Murphy
 Notary Public, HENNEPIN County, Minnesota
 My Commission Expires January 31, 2008

City of Roseville
 We do hereby certify that on the 25th day of October, 2004, the City Council of the City of Roseville, Minnesota, approved this plat. All monuments will be set as specified by the City Council and as stated on this plat, according to Minnesota Statutes, Section 505.02, Subdivision 1.

Ray D. Klumpp Mayor Neal J. Beets City Manager

Taxes payable in the year 2004 on the land herein described have been paid, also there are no delinquent taxes and transfer entered this 24th day of December, 2004.

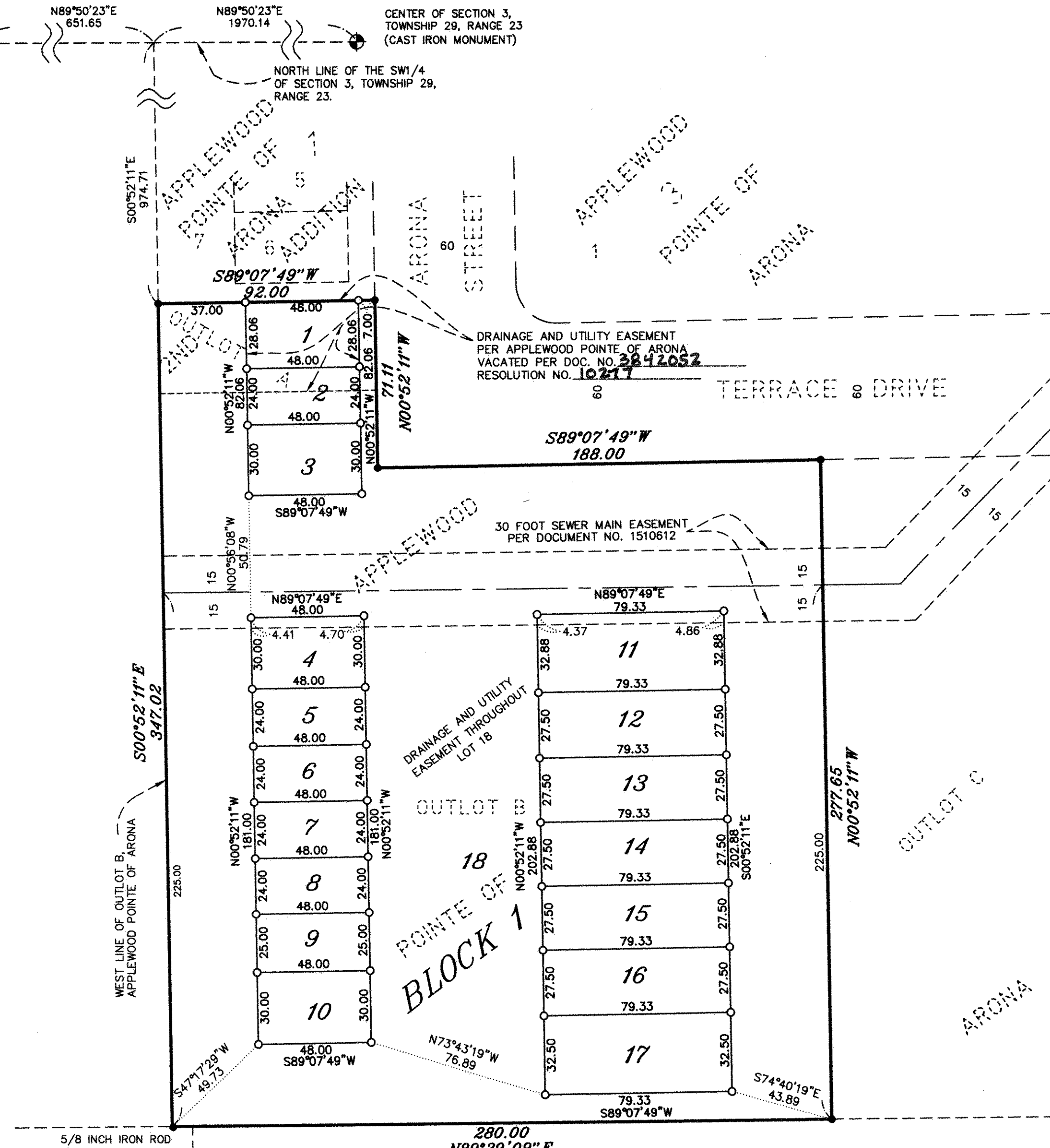
Quinn McQuinn Director By Yvonne Conroy Deputy
 Department of Property Taxation

Pursuant to Minnesota Statutes, Section 383A.42, this plat has been examined and is approved this 22nd day of February, 2005, and the conditions of Minnesota Statutes, Section 505.03, Subdivision 2, have been fulfilled.

David D. Claypool
 David D. Claypool, L.S.
 Ramsey County Surveyor

County Recorder
 County of Ramsey, State of Minnesota
 I hereby certify that this plat of APPLEWOOD POINTE OF ARONA 3RD ADDITION was filed in the office of the County Recorder for public record on this 22 day of FEBRUARY, 2005, at 3 o'clock P. M., and was duly filed in Book 121 of Plats, Page 12, as Document Number 3842654

Deputy County Recorder

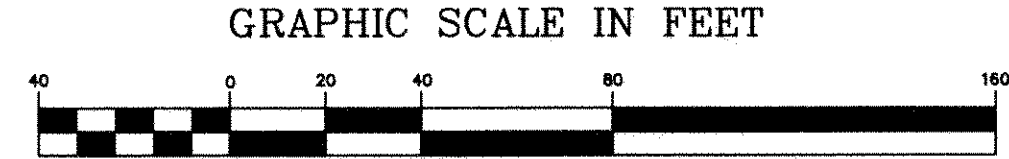


NORTH

VENTURE 2ND ADDITION

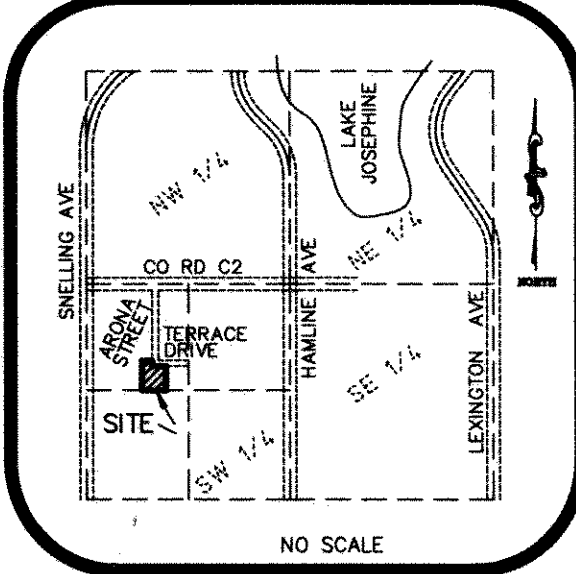
VENTURE ADDITION

- DENOTES FOUND 1/2 INCH BY 18 INCH IRON PIPE MARKED BY RLS NO. 41578 OR AS LABELED.
- DENOTES 1/2 INCH BY 18 INCH SET IRON PIPE MARKED BY RLS NO. 41578



THE ORIENTATION OF THIS BEARING SYSTEM IS BASED ON THE WEST LINE OF OUTLOT B, APPLEWOOD POINTE OF ARONA, RAMSEY COUNTY, MINNESOTA, WHICH IS ASSUMED TO BEAR S00°52'11\"

VICINITY MAP
 SECTION 3, TOWNSHIP 29, RANGE 23



E. G. RUD & SONS, INC.
 Land Surveyors

