

# GOSEERUD ADDITION

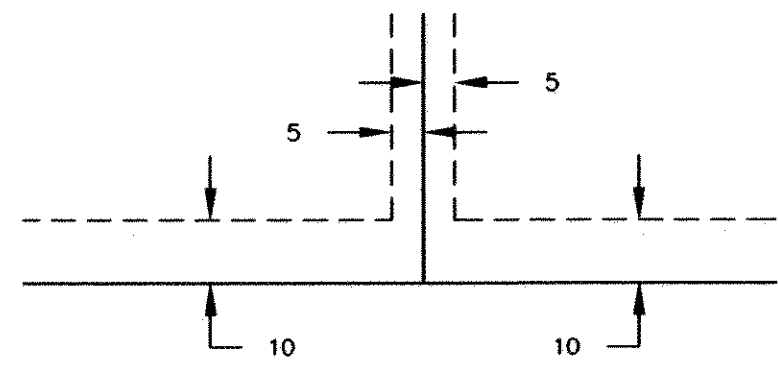
BORSTAD  
RAMSEY COUNTY, MINNESOTA

### LEGEND:

- Denotes iron pipe monument set marked RLS 41578
- Denotes monument found

For the purposes of this plat the West line of the Northeast Quarter of Section 22, Township 30, Range 23, Ramsey County, Minnesota is assumed to have a bearing of S 00°36'09" E.

DRAINAGE AND UTILITY EASEMENTS ARE SHOWN THUS:

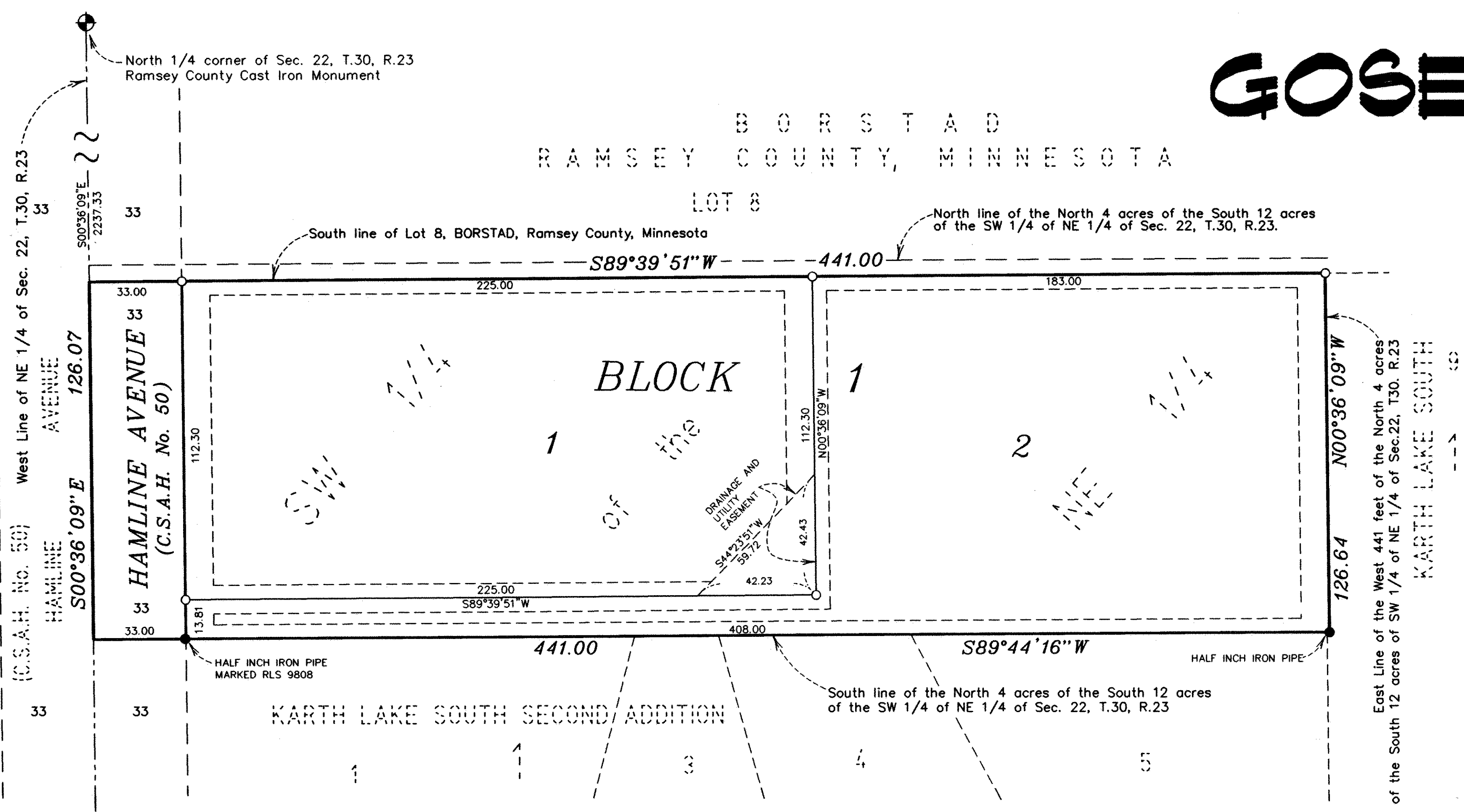


BEING 5 FEET IN WIDTH AND ADJOINING SIDE LOT LINES AND 10 FEET IN WIDTH AND ADJOINING STREET LINES AND REAR LOT LINES, UNLESS OTHERWISE SHOWN ON THIS PLAT.

### GRAPHIC SCALE



SCALE IN FEET  
SCALE: 1 inch = 30 feet



KNOW ALL MEN BY THESE PRESENTS: That Thomas E. Goserud and Kathleen A. Goserud, husband and wife, fee owners of the following described property situated in the City of Arden Hills, County of Ramsey, State of Minnesota:

That part of the West 441.00 feet of the North 4.00 Acres of the South 12.00 Acres of the Southwest Quarter of the Northeast Quarter of Section 22, Township 30, Range 23, lying southerly of the South line of Lot 8, BORSTAD, RAMSEY COUNTY, MINNESOTA.

Have caused the same to be surveyed and platted as GOSEERUD ADDITION and do hereby dedicate to the public for public use forever the thoroughfare and the drainage and utility easements as shown on this plat.

In witness whereof said Thomas E. Goserud and Kathleen A. Goserud, husband and wife, have hereunto set their hands this 29th day of August, 2002.

Thomas E. Goserud  
Thomas E. Goserud

Kathleen A. Goserud  
Kathleen A. Goserud

State of Minnesota  
County of Anoka

The foregoing instrument was acknowledged before me this 29th day of August, 2002, by Thomas E. Goserud and Kathleen A. Goserud, husband and wife.



Cathleen R. Bruno  
Notary Public, Minnesota  
My Commission Expires January 31, 2005

I hereby certify that I have surveyed and platted the property described on this plat as GOSEERUD ADDITION; that this plat is a correct representation of the survey; that all distances are correctly shown on the plat in feet and hundredths of a foot; that all monuments have been correctly placed in the ground as shown; that the outside boundary lines are correctly designated on the plat; and there are no wet lands as defined in Minnesota Statutes, Section 505.02, Subd. 1, or public highways to be designated other than as shown on this plat.

Jason E. Rud  
Jason E. Rud, Land Surveyor  
Minnesota License No. 41578

State of Minnesota  
County of Anoka

The foregoing Surveyor's Certificate was acknowledged before me this 16th day of August, 2002, by Jason E. Rud, a Licensed Land Surveyor.



Cathleen R. Bruno  
Notary Public, Minnesota  
My Commission Expires January 31, 2005

City of Arden Hills

We do hereby certify that on the 29th day of August, 2002, the City Council of the City of Arden Hills, Minnesota, approved this plat. All monuments will be set as specified by the City Council and as stated on this plat, according to Minnesota Statutes, Section 505.02, Subd. 1.

John August  
Mayor

Kathleen A. Goserud  
Clerk

Taxes payable in the year 2002 on the land herein described have been paid, also there are no delinquent taxes and transfer entered this 16th day of October, 2002.

Dorothy McClung, Director  
Department of Property Taxation

By Mary Kay Kempin, Deputy

Pursuant to Minnesota Statutes, Section 383A.42, this plat has been examined and is approved this 17th day of October, 2002, and the conditions of Minnesota Statutes, Section 505.03, Subdivision 2, have been fulfilled.

David D. Claypool, Deputy  
David D. Claypool, L.S.  
Ramsey County Surveyor

County Recorder  
County of Ramsey, State of Minnesota

I hereby certify that this plat of GOSEERUD ADDITION was filed in the office of the County Recorder for public record on this 17th day of October, 2002, at 8 o'clock A.M. and was duly filed in Book 118 of Plats, Page 26 as Document Number 3543715.

Deputy County Recorder

**E. G. RUD & SONS, INC.**  
Land Surveyors