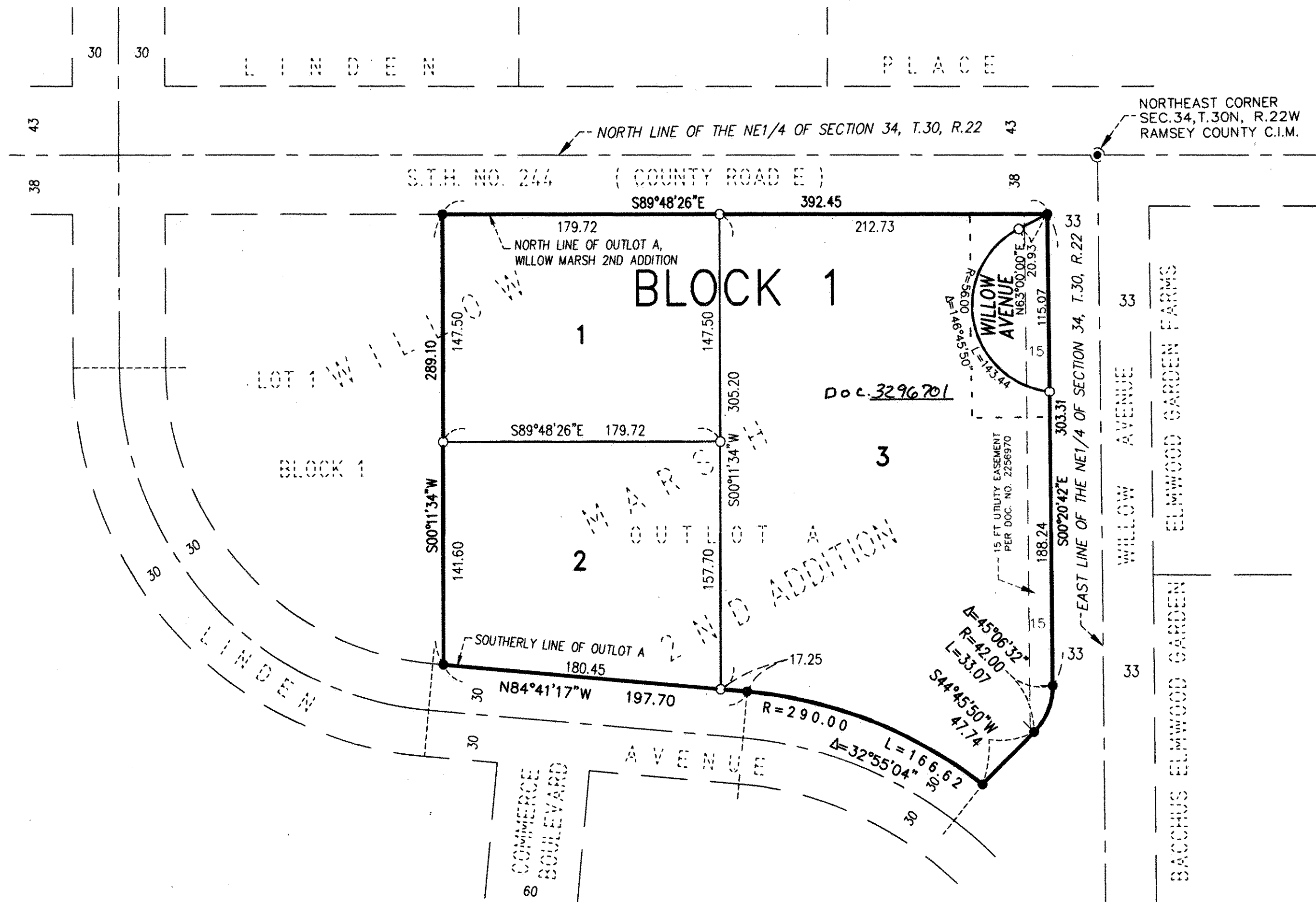


WILLOW MARSH 5TH ADDITION



KNOW ALL MEN BY THESE PRESENTS: That Willow Marsh Office Limited Partnership, a Minnesota limited partnership, fee owner of the following described property situated in City of White Bear Lake, County of Ramsey, State of Minnesota:

Outlot A, WILLOW MARSH 2ND ADDITION, according to the recorded plat thereof, Ramsey County, Minnesota.

Has caused the same to be surveyed and platted as WILLOW MARSH 5TH ADDITION and does hereby dedicate to the public for public use forever the cul-de-sac as shown on this plat.

In witness whereof said Willow Marsh Office Limited Partnership, a Minnesota limited partnership, has caused these presents to be signed by its General Partner this 20 day of DECEMBER, 1999.

Signed: WILLOW MARSH OFFICE LIMITED PARTNERSHIP
By: Thomas H. Weber its President

STATE OF MINNESOTA
COUNTY OF HENNEPIN

The foregoing instrument was acknowledged before me this 20th day of December, 1999, by Thomas H. Weber, President of Willow Marsh Development, Inc., a Minnesota corporation, General Partner of Willow Marsh Office Limited Partnership, a Minnesota limited partnership, on behalf of the partnership.

Daniel W. Skinner
Notary Public, Ramsey County, Minnesota
My Commission Expires January 31, 2000

I hereby certify that I have surveyed and platted the property described on this plat as WILLOW MARSH 5TH ADDITION; that this plat is a correct representation of the survey; that all distances are correctly shown on the plat in feet and hundredths of a foot; that all monuments have been correctly placed in the ground as shown; that the outside boundary lines are correctly designated on the plat; and there are no wet lands as defined in Minnesota Statutes, Section 505.02, Subd. 1, or public highways to be designated other than as shown on this plat.

Paul A. Johnson
Paul A. Johnson, Land Surveyor
Minnesota License No. 10938

STATE OF MINNESOTA
COUNTY OF RAMSEY

The foregoing Surveyor's Certificate was acknowledged before me this 20th day of DECEMBER, 1999, by Paul A. Johnson, a Licensed Land Surveyor.

Daniel W. Skinner
Notary Public, Ramsey County, Minnesota
My Commission Expires January 31, 2000

City of White Bear Lake

We do hereby certify that on the 26 day of October, 1999, the City Council of the City of White Bear Lake, Minnesota, approved this plat. All monuments will be set as specified by the City Council and as stated on this plat, according to Minnesota Statutes, Section 505.02, Subd. 1.

Paul J. ... Mayor
Carol ... Clerk

Taxes payable in the year 1999 on the land herein described have been paid, also there are no delinquent taxes and transfer entered this 27th day of December, 1999.

Dorothy McClung Director
Department of Property Taxation
By: Joanna ... Deputy

Pursuant to Minnesota Statutes, Section 383A.42, this plat has been examined and is approved this 20th day of December, 1999, and the conditions of Minnesota Statutes, Section 505.03, Subd. 2, have been fulfilled.

David D. Claypool
David D. Claypool, L.S.
Ramsey County Surveyor

County Recorder, County of Ramsey, State of Minnesota

I hereby certify that this plat of WILLOW MARSH 5TH ADDITION was filed in the office of the County Recorder for public record on this 29 day of DECEMBER, 1999, at 9:33 o'clock A.M. and was duly filed in Book 116 of Plats, Page 1, as Document Number 3297001.

Deputy County Recorder

- DENOTES 1/2 INCH X 14 INCH IRON PIPE MONUMENT FOUND AND MARKED BY RLS NO. 10938
- DENOTES 1/2 INCH X 14 INCH IRON PIPE MONUMENT SET AND MARKED BY RLS NO. 10938

THE NORTH LINE OF OUTLOT A, WILLOW MARSH 2ND ADDITION IS ASSUMED TO BEAR S89°48'26\"/>

