

LEXINGTON COMMONS

CAST IRON MONUMENT
N 1/4 CORNER OF
SEC. 10, T.28N., R.23W.
X = 558659.307
Y = 152259.726

REBAR
NE CORNER OF
SEC. 10, T.28N., R.23W.
X = 561317.870
Y = 152251.287

KNOW ALL MEN BY THESE PRESENTS: That Mendota Homes, Inc., a Minnesota Corporation, owner, and 1st State Bank of Excelsior, a Minnesota Corporation, mortgagee of the following described property situated in the City of Saint Paul, County of Ramsey, State of Minnesota: Lot 19, Rueth's Addition, according to the recorded plat thereof; and that part West of Lexington Avenue and Easterly of the Chicago, Milwaukee Railroad of the Northeast Quarter of Section 10, Township 28, Range 23, except the North 463 feet, according to the Government Survey.

Have caused the same to be surveyed and platted as LEXINGTON COMMONS, and do hereby dedicate to the public for public use forever the alley and drainage and utility easements as shown on this plat.

In witness whereof said Mendota Homes, Inc., a Minnesota Corporation, has caused these presents to be signed by its proper officer this 23rd day of December, 1998.
Signed: Mendota Homes, Inc.

[Signature]
John H. Mathern, President

In witness whereof said 1st State Bank of Excelsior, a Minnesota Corporation, has caused these presents to be signed by its proper officer this 23rd day of December, 1998.
Signed: 1st State Bank of Excelsior

[Signature]
Janice V. Berg, Assistant Vice President

STATE OF MINNESOTA)
COUNTY OF Hennepin
The foregoing instrument was acknowledged before me this 23rd day of December, 1998, by John H. Mathern, President of Mendota Homes, Inc., a Minnesota Corporation, on behalf of the corporation.

[Notary Seal]
TAMI J. LAECHELT
NOTARY PUBLIC - MINNESOTA
HENNEPIN COUNTY
My Commission Expires 1-31-00

[Signature]
Notary Public, Hennepin County, Minnesota
My Commission Expires 1-31-00

STATE OF MINNESOTA)
COUNTY OF Hennepin
The foregoing instrument was acknowledged before me this 23rd day of December, 1998, by Janice V. Berg, Assistant Vice President of 1st State Bank of Excelsior, a Minnesota Corporation, on behalf of the corporation.

[Notary Seal]
TAMI J. LAECHELT
NOTARY PUBLIC - MINNESOTA
HENNEPIN COUNTY
My Commission Expires 1-31-00

[Signature]
Notary Public, Hennepin County, Minnesota
My Commission Expires 1-31-00

I hereby certify that I have surveyed and platted the property described on this plat as LEXINGTON COMMONS; that this plat is a correct representation of the survey; that all distances are correctly shown on the plat in feet and hundredths of a foot; that all monuments have been correctly placed in the ground as shown; that the outside boundary lines are correctly designated on the plat; and there are no wet lands as defined in Minnesota Statutes, Section 505.02, Subd. 1, or public highways to be designated other than as shown on this plat.

[Signature]
Wesley S. Stone, Land Surveyor, Minnesota License No. 20268

STATE OF MINNESOTA)
COUNTY OF RAMSEY
The foregoing Surveyor's Certificate was acknowledged before me this 18th day of December, 1998, by Wesley S. Stone, a Licensed Land Surveyor.

[Notary Seal]
ALAN IRWIN
NOTARY PUBLIC - MINNESOTA
ANOKA COUNTY
My Commission Expires 1-31-00

Notary Public, ANOKA County, Minnesota
My Commission Expires JAN 31, 2000

City of Saint Paul
I do hereby certify that on the 27th day of January, 1999, the City Council of the City of Saint Paul, Minnesota, approved this plat. All monuments will be set as specified by the City Council and as stated on this plat, according to Minnesota Statutes, Section 505.02, Subd. 1.

[Signature]
Clerk

Taxes payable in the year 1999 on the land herein described have been paid, also there are no delinquent taxes and transfer entered this 4th day of February, 1999.

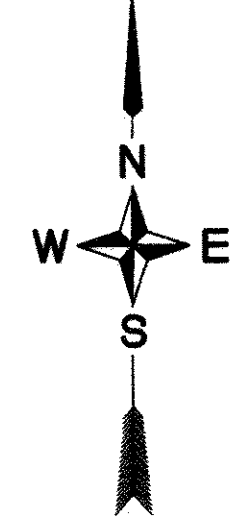
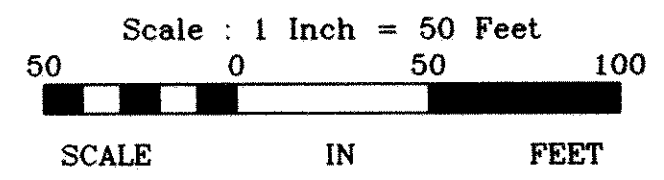
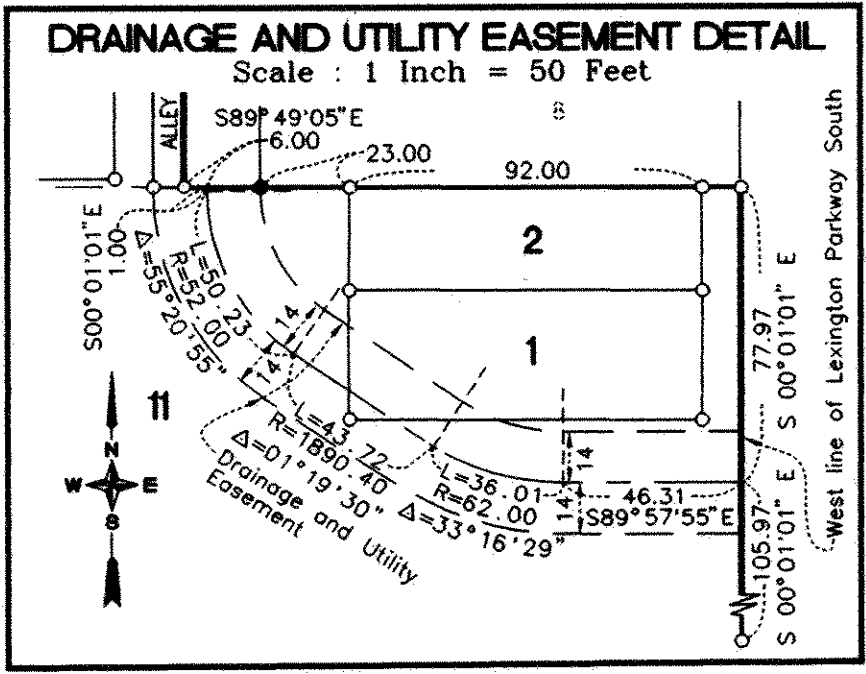
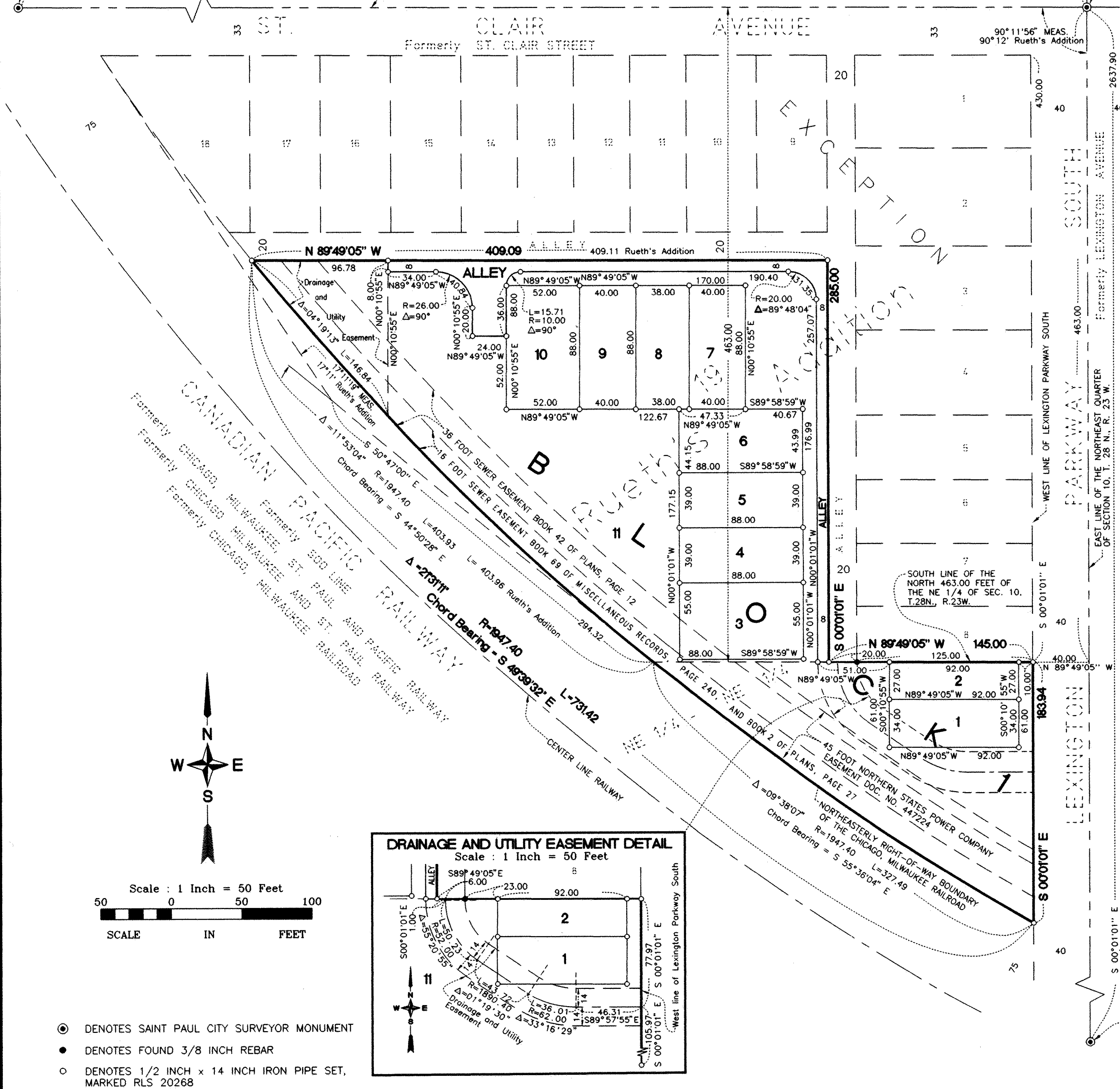
[Signature] Director
Department of Property Taxation
By *[Signature]* Deputy

Pursuant to Minnesota Statutes, Section 383A.42, this plat has been examined and is approved this 4th day of February, 1999 and the conditions of Minnesota Statutes, Section 505.03 Subdivision 2, have been fulfilled.

[Signature]
David D. Claypool, L.S.
Ramsey County Surveyor

Registrar of Titles, County of Ramsey, State of Minnesota
I hereby certify that this plat of LEXINGTON COMMONS was filed in the office of the Registrar of Titles for public record on this 12th day of FEBRUARY, 1999, at 4:30 o'clock P.M. and was duly filed in Book 42 of Plats, Page 40, as Document Number 1511864.

Deputy Registrar of Titles



- DENOTES SAINT PAUL CITY SURVEYOR MONUMENT
- DENOTES FOUND 3/8 INCH REBAR
- DENOTES 1/2 INCH x 14 INCH IRON PIPE SET, MARKED RLS 20268

Orientation of this bearing system is based upon Ramsey County Coordinates, North American Datum of 1983.
Coordinates shown are per Ramsey County Public Works Land Survey Division December 17, 1991 Final Adjustment.
Rueth's Addition preceded by a dimension - Refers to dimensions as shown on the plat of Rueth's Addition.

County Recorder, County of Ramsey, State of Minnesota
I hereby certify that this plat of LEXINGTON COMMONS was filed in the office of the County Recorder for public record on this ___ day of _____, 19___ at ___ o'clock ___ M. and was duly filed in Book _____ of Plats, Page _____ as Document Number _____

Deputy County Recorder