

MIDWAY SHOPPING CENTER

KNOW ALL MEN BY THESE PRESENTS: That RK Midway LLC, a Delaware limited liability company, owner, Madison Greenfields LLC, a Delaware limited liability company, mortgagee, and FB Midway LLC, a Delaware limited liability company, mortgagee and City of Saint Paul, Minnesota, a Minnesota municipal corporation, mortgagee of the following described property situated in the City of Saint Paul, County of Ramsey, State of Minnesota:

That part of the West 1/2 of the Southwest quarter of Section 34, Township 29 North, Range 23 West of the fourth principal meridian, according to the United States Government Survey, lying North of the center line of St. Anthony Avenue, except those parts thereof described as follows:

1. The West 270 feet of the North 260 feet thereof;
2. Beginning at a point in the West line thereof (which is assumed to be a true North and South line for the purpose of this description) that is 757.21 feet South of the Northwest corner thereof; thence North 89 degrees 59 minutes East to a point that is 870.35 feet East of the West line thereof; thence South along a line that is parallel to and 870.35 feet East of the West line thereof a distance of 644.05 feet, more or less, to a point in the center line of St. Anthony Avenue; thence Westerly along said center line a distance of 874.53 feet, more or less, to a point in the West line of said West 1/2 of the Southwest 1/4; thence North along said West line a distance of 558.48 feet, more or less, to the point of beginning;
3. Snelling Avenue and University Avenue, and
4. All that part which lies Southerly of a line run parallel with and distant 27 feet Northerly of the following described line: Beginning at a point on the West line of said Section 34, distant 1309.06 feet South of the West 1/4 corner thereof; thence run Easterly at an angle of 89 degrees 39 minutes 32 seconds with said West Section line (measured from North to East) for 617.08 feet; thence deflect to the left on a 2 degree 00 minute curve (delta angle 2 degrees 34 minutes 3 seconds) for 128.51 feet; thence on tangent to a said curve for 576.35 feet and there terminating.

Have caused the same to be surveyed and platted as MIDWAY SHOPPING CENTER and do hereby dedicate to the public for public use forever the thoroughfares and the utility easements as shown on this plat.

In witness whereof said RK Midway LLC, a Delaware limited liability company, has caused these presents to be signed by its proper officer this 28th day of December, 1998.

Signed: RK Midway LLC

By: RK Midway Corp., its Managing Member

By Arif F. Hani, its ^{vice} President

In witness whereof said Madison Greenfields LLC, a Delaware limited liability company, has caused these presents to be signed by its proper officer this 28th day of December, 1998.

Signed: Madison Greenfields LLC

By: Flatiron Properties, LLC, a Member

By DMJ Joo, its Vice President

In witness whereof said FB Midway LLC, a Delaware limited liability company, has caused these presents to be signed by its proper member this 28th day of December, 1998.

Signed: FB Midway LLC

By [Signature], a Member

In witness whereof said City of Saint Paul, Minnesota, a Minnesota municipal corporation, has caused these presents to be signed by its proper officers this 30th day of December, 1998.

Signed: City of Saint Paul, Minnesota

By Norm Coleman, its Mayor
Norman B. Coleman

By Joseph M. Reid, its **FINANCE DIRECTOR**

State of New York
County of NEW YORK

The foregoing instrument was acknowledged before me this 28th day of December, 1998, by ALFRED T. ROSS, the ^{vice} President of RK Midway Corp., a Delaware corporation which is the Managing Member of RK Midway LLC, a Delaware limited liability company, on behalf of the limited liability company.

Eve Shufflet
Notary Public, Queens County, New York
My Commission Expires October 26, 2000

EVE SHUFFLET
Notary Public, State of New York
No. 91-000001
Qualified in Queens County
Commission Expires Oct. 26, 2000

State of New York
County of New York

The foregoing instrument was acknowledged before me this 28th day of December, 1998, by David J. Loo, the Vice President of Flatiron Properties, LLC, a Delaware limited liability company which is a Member of Madison Greenfields LLC, a Delaware limited liability company, on behalf of the limited liability company.

Monique Weiss
Notary Public, Queens County, New York
My Commission Expires August 30, 1999

MONIQUE WEISS
Notary Public, State of New York
No. 01WE5017072
Qualified in Queens County
Commission Expires Aug. 30, 1999

State of New York
County of NEW YORK

The foregoing instrument was acknowledged before me this 28th day of December, 1998, by JAY FURMAN, a Member of FB Midway LLC, a Delaware limited liability company, on behalf of the limited liability company.

Eve Shufflet
Notary Public, Queens County, New York
My Commission Expires October 26, 2000

EVE SHUFFLET
Notary Public, State of New York
No. 91-000001
Qualified in Queens County
Commission Expires Oct. 26, 2000

State of Minnesota
County of Ramsey

The foregoing instrument was acknowledged before me this 30th day of December, 1998, by Norm B. Coleman, the Mayor, and Joseph M. Reid, the Finance Director of the City of Saint Paul, Minnesota, a Minnesota municipal corporation, on behalf of the corporation.

LUCILLE A. JOHNSON
NOTARY PUBLIC-MINNESOTA
My Commission Expires Jan. 31, 2000

Lucille A. Johnson
Notary Public, Ramsey County, Minnesota
My Commission Expires Jan. 31, 2000

I hereby certify that I have surveyed and platted the property described on this plat as MIDWAY SHOPPING CENTER; that this plat is a correct representation of the survey; that all distances are correctly shown on the plat in feet and hundredths of a foot; that all monuments have been correctly placed in the ground as shown; that the outside boundary lines are correctly designated on the plat; that there are no wet lands as defined in Minnesota Statutes, Section 505.02, Subd. 1, or public highways to be designated other than as shown on this plat.

Alvin R. Rehder
Alvin R. Rehder, Land Surveyor
Minnesota License No. 13295

State of Minnesota
County of CARVER

The foregoing Surveyor's Certificate was acknowledged before me this 22nd day of December, 1998, by Alvin R. Rehder, a Licensed Land Surveyor.

GREGORY L. GENTZ
NOTARY PUBLIC - MINNESOTA
My Commission Expires Jan. 31, 2000

Gregory L. Gentz
Notary Public, CARVER County, Minnesota
My Commission Expires JANUARY 31, 2000

City of Saint Paul, Minnesota

I do hereby certify that on the 21st day of December, 1994, the City Council of the City of Saint Paul, Minnesota, approved this plat. All monuments will be set as specified by the City Council and as stated on this plat, according to Minnesota Statutes, Section 505.02, Subd. 1.

Frederick K. Davis
Clerk

Taxes payable in the year 1998 on the land herein described have been paid, also there are no delinquent taxes, except 1992 payables, which are being paid in installments per the confirmed plan in In re Rein-Midway Limited Partnership, Case No. 92 B 42431 (BRL) (Bkrpty. S.D.N.Y.); and transfer entered this 30 day of December, 1998.

Deborah McClung, Director
Department of Property Taxation

By [Signature], Deputy

Pursuant to Minnesota Statutes, Section 383A.42, this plat has been examined and is approved this 31st day of December, 1998, and the conditions of Minnesota Statutes, Section 505.03, Subdivision 2, have been fulfilled.

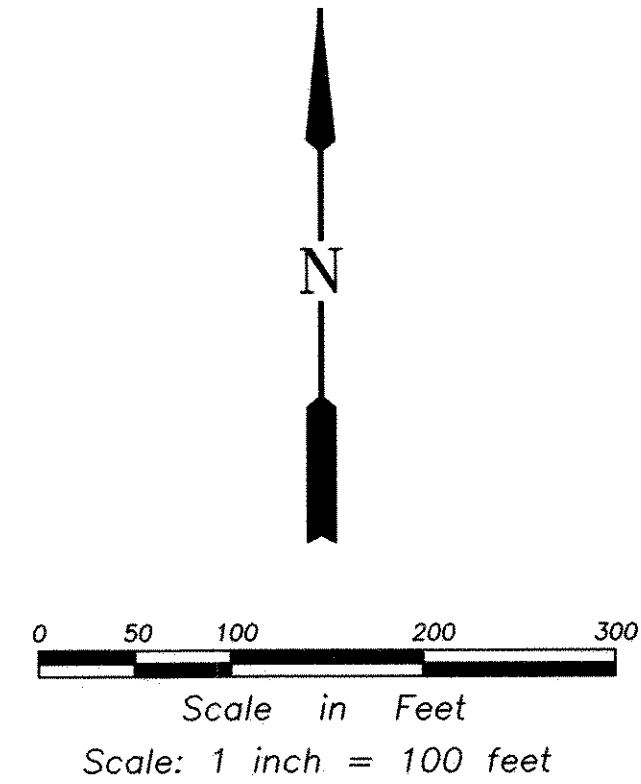
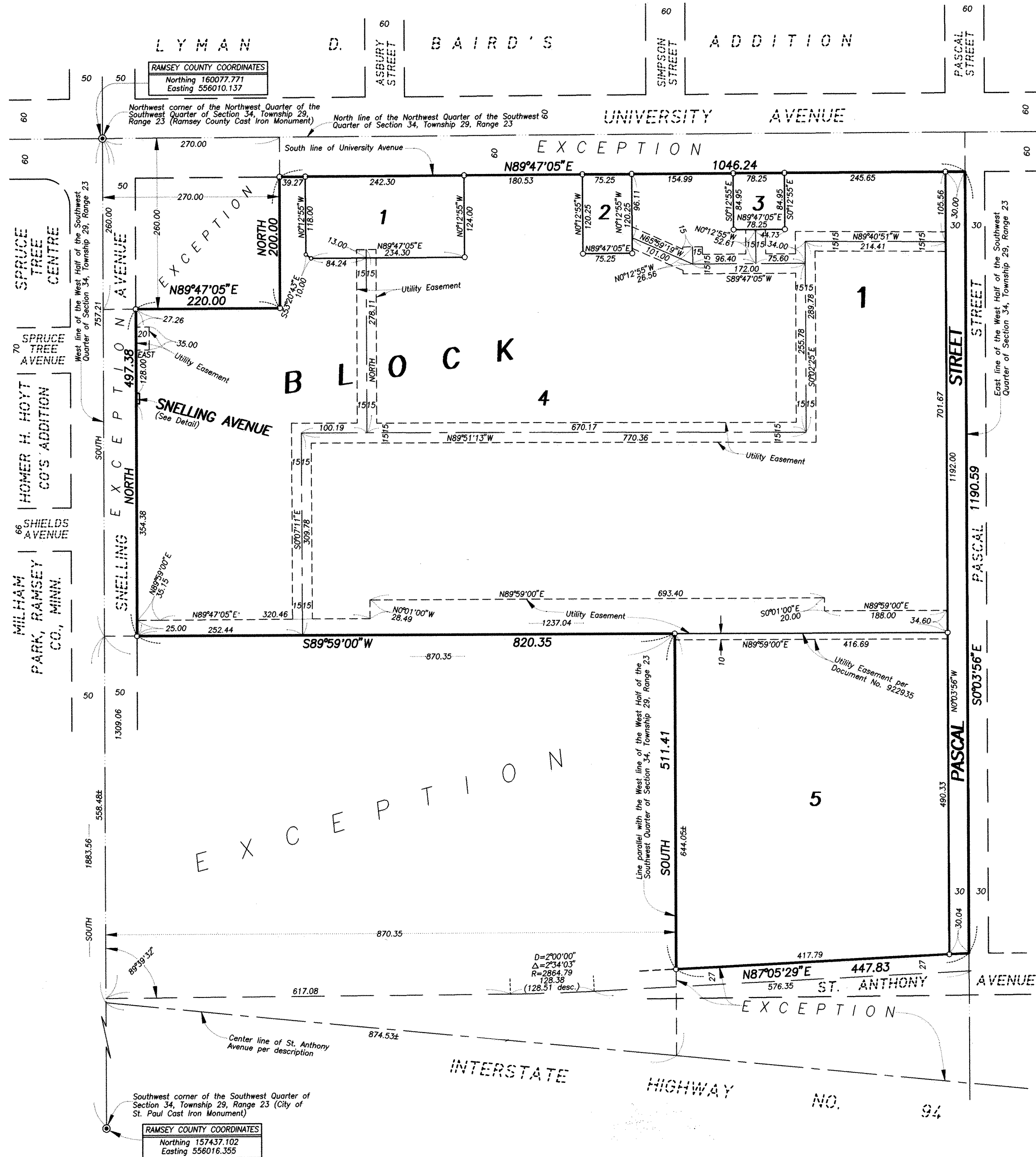
David D. Claypool
David D. Claypool, L.S.
Ramsey County Surveyor

Registrar of Titles, County of Ramsey, State of Minnesota

I hereby certify that this plat of MIDWAY SHOPPING CENTER was filed in the office of the Registrar of Titles for public record on this 31st day of December, 1998, at 4:30 o'clock P.M. and was duly filed in Book 42 of Plats, Pages 36 and 37, as Document Number 1508012.

Deputy Registrar of Titles

MIDWAY SHOPPING CENTER



The north line of the Northwest Quarter of the Southwest Quarter of Section 34, Township 29, Range 23 is assumed to have a bearing of N89°47'05"E.

○ Denotes 1/2 inch x 14 inch iron pipe set and marked by Minnesota License No. 13295.

