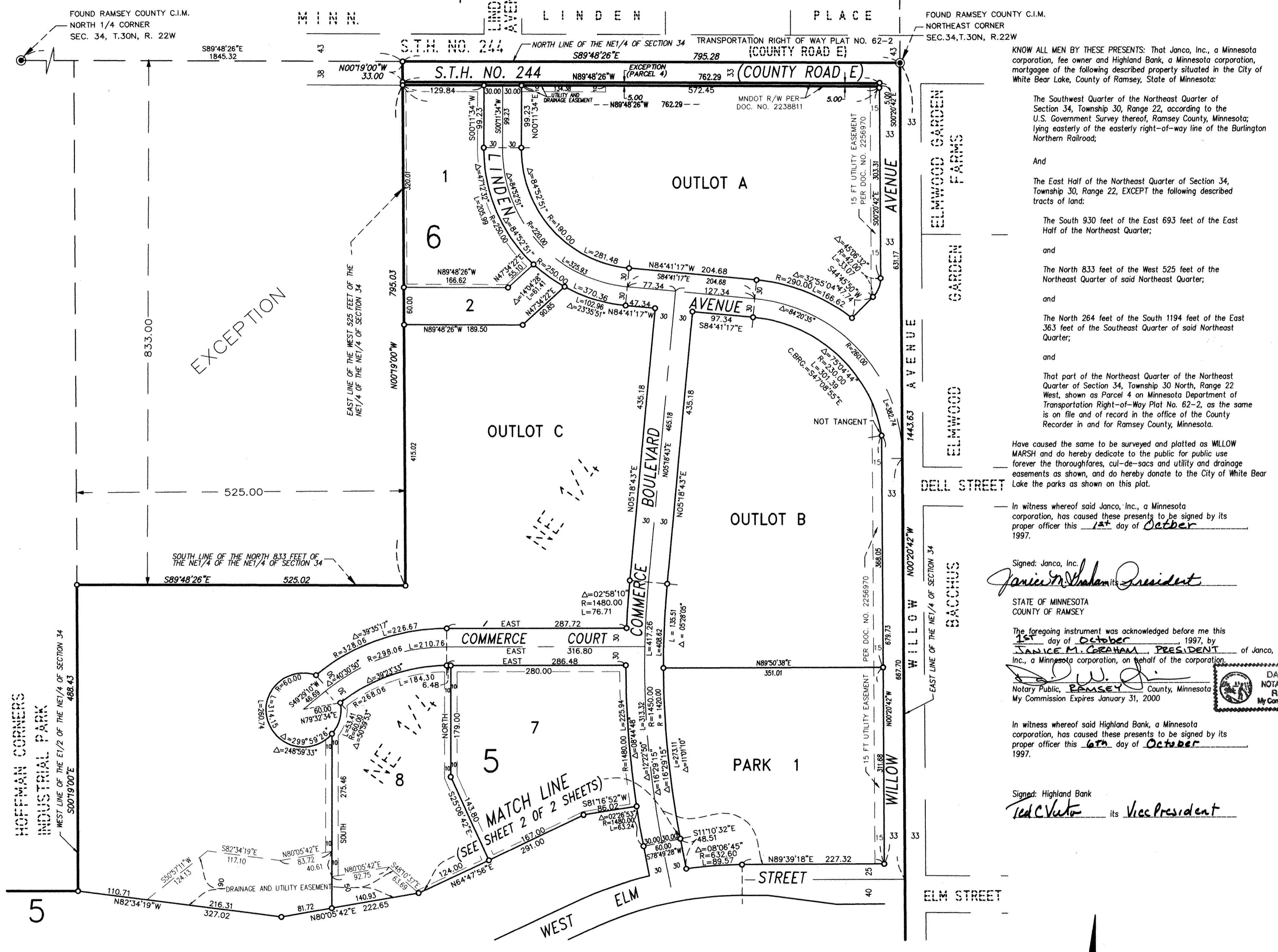


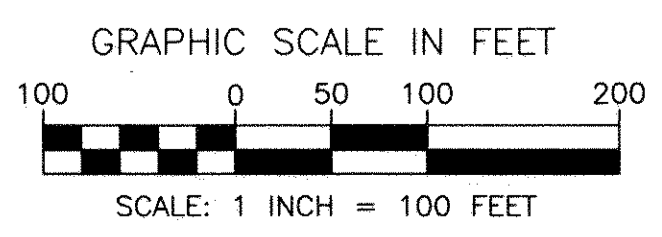
WILLOW MARSH

STRAWBERRY
ACRES
RAMSEY COUNTY,
MINN.



○ DENOTES 1/2 INCH X 14 INCH IRON PIPE MONUMENT SET AND MARKED BY RLS NO. 10938

THE SOUTH LINE OF THE NE1/4 OF SECTION 34, TOWNSHIP 30, RANGE 22 IS ASSUMED TO BEAR N89°57'48"E.



McCOMBS FRANK ROOS ASSOCIATES, INC.
ENGINEERS AND SURVEYORS

KNOW ALL MEN BY THESE PRESENTS: That Janco, Inc., a Minnesota corporation, fee owner and Highland Bank, a Minnesota corporation, mortgagee of the following described property situated in the City of White Bear Lake, County of Ramsey, State of Minnesota:

The Southwest Quarter of the Northeast Quarter of Section 34, Township 30, Range 22, according to the U.S. Government Survey thereof, Ramsey County, Minnesota; lying easterly of the easterly right-of-way line of the Burlington Northern Railroad;

And
The East Half of the Northeast Quarter of Section 34, Township 30, Range 22, EXCEPT the following described tracts of land:

The South 930 feet of the East 693 feet of the East Half of the Northeast Quarter;

and
The North 833 feet of the West 525 feet of the Northeast Quarter of said Northeast Quarter;

and
The North 264 feet of the South 1194 feet of the East 363 feet of the Southeast Quarter of said Northeast Quarter;

and
That part of the Northeast Quarter of the Northeast Quarter of Section 34, Township 30 North, Range 22 West, shown as Parcel 4 on Minnesota Department of Transportation Right-of-Way Plat No. 62-2, as the same is on file and of record in the office of the County Recorder in and for Ramsey County, Minnesota.

Have caused the same to be surveyed and platted as WILLOW MARSH and do hereby dedicate to the public for public use forever the thoroughfares, cul-de-sacs and utility and drainage easements as shown, and do hereby donate to the City of White Bear Lake the parks as shown on this plat.

In witness whereof said Janco, Inc., a Minnesota corporation, has caused these presents to be signed by its proper officer this 1st day of October 1997.

Signed: Janco, Inc.
Janice M. Crehana President

STATE OF MINNESOTA
COUNTY OF RAMSEY
The foregoing instrument was acknowledged before me this 1st day of October 1997, by JANICE M. CREHANA PRESIDENT of Janco, Inc., a Minnesota corporation, on behalf of the corporation.
Daniel W. Skinner
Notary Public, Ramsey County, Minnesota
My Commission Expires January 31, 2000

In witness whereof said Highland Bank, a Minnesota corporation, has caused these presents to be signed by its proper officer this 6th day of October 1997.

Signed: Highland Bank
Ted C. Victor its Vice President

STATE OF MINNESOTA
COUNTY OF RAMSEY
The foregoing instrument was acknowledged before me this 6th day of October 1997, by TED C. VICTOR VICE PRESIDENT of Highland Bank, a Minnesota corporation, on behalf of the corporation.
Tami J. Laechelt
Notary Public, Ramsey County, Minnesota
My Commission Expires January 31, 2000

I hereby certify that I have surveyed and platted the property described on this plat as WILLOW MARSH; that this plat is a correct representation of the survey; that all distances are correctly shown on the plat in feet and hundredths of a foot; that all monuments have been correctly placed in the ground as shown; that the outside boundary lines are correctly designated on the plat; and there are no wet lands as defined in Minnesota Statutes, Section 505.02, Subd. 1, or public highways to be designated other than as shown on this plat.
Paul A. Johnson
Paul A. Johnson, Land Surveyor
Minnesota License No. 10938

STATE OF MINNESOTA
COUNTY OF RAMSEY
The foregoing Surveyor's Certificate was acknowledged before me this 1st day of October 1997, by Paul A. Johnson, a Licensed Land Surveyor.
Daniel W. Skinner
Notary Public Ramsey County, Minnesota
My Commission Expires January 31, 2000

City of White Bear Lake
I do hereby certify that on the 12th day of August 1997, the City Council of the City of White Bear Lake, Minnesota, approved this plat. All monuments will be set as specified by the City Council as stated on this plat, according to Minnesota Statutes, Section 505.02, Subd. 1.
Craig Bengtson Clerk

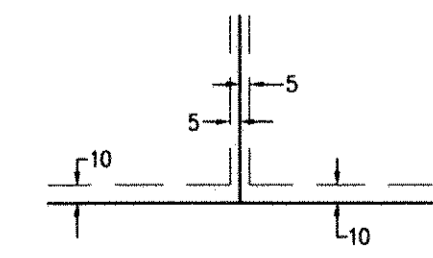
Taxes payable in the year 1997 on the land herein described have been paid, also there are no delinquent taxes and transfer entered this 3rd day of October 1997.
Mary Mahoney acting Director
Department of Property Taxation

By *Jennifer Johnson* Deputy
Pursuant to Minnesota Statutes, Section 383A.42, this plat has been examined and is approved this 7th day of October 1997, and the conditions of Minnesota Statutes, Section 505.03, Subd. 2, have been fulfilled.
By: *Ronald Meyer* Deputy
David D. Claypool, L.S.
Ramsey County Surveyor
County Recorder, County of Ramsey, State of Minnesota

I hereby certify that this plat of WILLOW MARSH was filed in the office of the County Recorder for public record on this 16th day of OCTOBER 1997, at 9:29 o'clock A.M. and was duly filed in Book 113 of Plats, Pages 28 and 29, as Document Number 3018326.

Deputy County Recorder

UTILITY AND DRAINAGE EASEMENTS ARE SHOWN THUS:

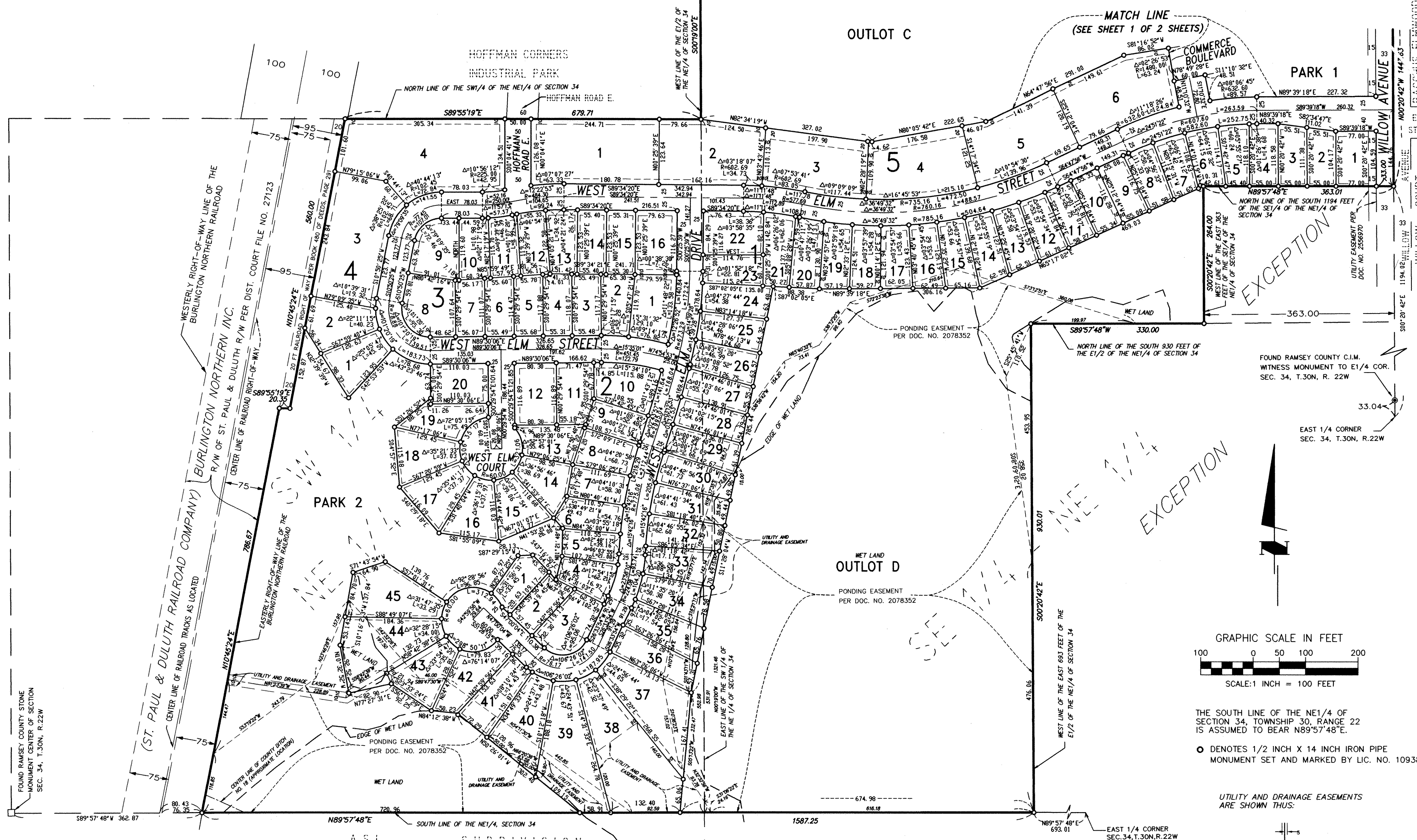


BEING 5 FEET IN WIDTH AND ADJOINING LOT LINES, UNLESS OTHERWISE INDICATED, AND 10 FEET IN WIDTH AND ADJOINING RIGHT-OF-WAY LINE UNLESS OTHERWISE INDICATED ON THIS PLAT.

WILLOW MARSH

COPY

OUTLOT C



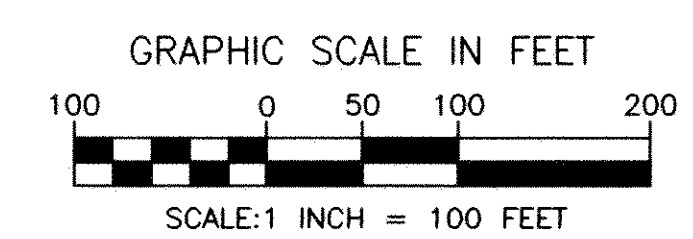
FOUND RAMSEY COUNTY STONE MONUMENT CENTER OF SECTION SEC. 34, T.30N, R.22W

589°57'48"W 362.87

N89°57'48"E SOUTH LINE OF THE NE1/4, SECTION 34

1587.25

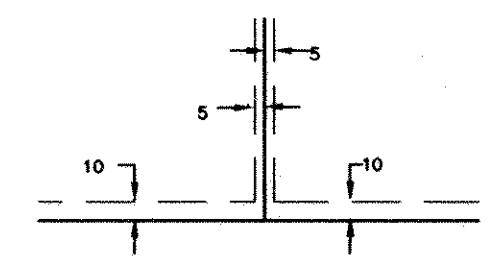
EAST 1/4 CORNER SEC.34,T.30N,R.22W



THE SOUTH LINE OF THE NE1/4 OF SECTION 34, TOWNSHIP 30, RANGE 22 IS ASSUMED TO BEAR N89°57'48"E.

○ DENOTES 1/2 INCH X 14 INCH IRON PIPE MONUMENT SET AND MARKED BY LIC. NO. 10938

UTILITY AND DRAINAGE EASEMENTS ARE SHOWN THUS:



BEING 5 FEET IN WIDTH, UNLESS OTHERWISE INDICATED, AND ADJOINING LOT LINES AND 10 FEET IN WIDTH, UNLESS OTHERWISE INDICATED, AND ADJOINING RIGHT-OF-WAY LINES AS SHOWN ON THIS PLAT.

McCOMBS FRANK ROOS ASSOCIATES, INC.
 ENGINEERS AND SURVEYORS