

KNOW ALL MEN BY THESE PRESENTS: That Otter, LLC, a Minnesota corporation, owner of the following described property situated in the City of White Bear Lake, County of Ramsey, State of Minnesota:

That part of the Westerly 566 feet of the North 15 acres of Government Lot 3, Section 15, Township 30, Range 22, according to the Government Survey thereof, lying northerly therefrom those portions conveyed to the County of Ramsey as recorded in Book 751 of Deeds on page 425 in the office of the County Recorder in and for Ramsey County and as per Ramsey County Document No. 650711.

Has caused the same to be surveyed and platted as TIMBERWOOD and does hereby dedicate to the public for public use forever the thoroughfare, cul-de-sac and the easements for drainage and utility purposes as shown on this plat.

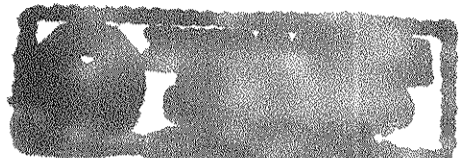
In witness whereof said Otter, LLC, a Minnesota corporation, has caused these presents to be signed by its proper officers this 9th day of May, 1996.

Signed: Otter, LLC

Eugene F. Arnt, President

Richard J. Schreier, Secretary/Treasurer

STATE OF MINNESOTA COUNTY OF Ramsey The foregoing instrument was acknowledged before me this 9 day of May, 1996, by Eugene F. Arnt, President of Otter, LLC, a Minnesota corporation, on behalf of the corporation.



Richard J. Schreier, Notary Public, Ramsey County, Minnesota, My Commission Expires 1-31-2000

STATE OF MINNESOTA COUNTY OF Anoka The foregoing instrument was acknowledged before me this 9th day of May, 1996, by Richard J. Schreier, Secretary/Treasurer of Otter, LLC, a Minnesota corporation, on behalf of the corporation.



Diane S. Halvorson, Notary Public, Anoka County, Minnesota, My Commission Expires 01-31-00

I hereby certify that I have surveyed and platted the property described on this plat as TIMBERWOOD; that this plat is a correct representation of the survey; that all distances are correctly shown on the plat in feet and hundredths of a foot; that all monuments have been correctly placed in the ground as shown; that the outside boundary lines are correctly designated on the plat; and there are no wet lands as defined in Minnesota Statutes, Section 505.02, Subd. 1, or public highways to be designated other than as shown on this plat.

Rodney H. Halvorson, Land Surveyor, Minnesota License No. 10947

STATE OF MINNESOTA COUNTY OF Anoka The foregoing Surveyor's Certificate was acknowledged before me this 19th day of April, 1996, by Rodney H. Halvorson, a Licensed Land Surveyor.



Diane S. Halvorson, Notary Public, Anoka County, Minnesota, My Commission Expires 01-31-00

City of White Bear Lake We do hereby certify that on the 14th day of May, 1996, the City Council of the City of White Bear Lake, Minnesota, approved this plat. All monuments will be set as specified by the City Council and as stated on this plat, according to Minnesota Statutes, Section 505.02, Subd. 1.

Patricia A. Butcher, Mayor

Corynne Carlson, Clerk

Taxes payable in the year 1996 on the land herein described have been paid, also there are no delinquent taxes and transfer entered this 24 day of May, 1996.

Lou McKenna, Director, Department of Property Taxation

J. Valente, Deputy

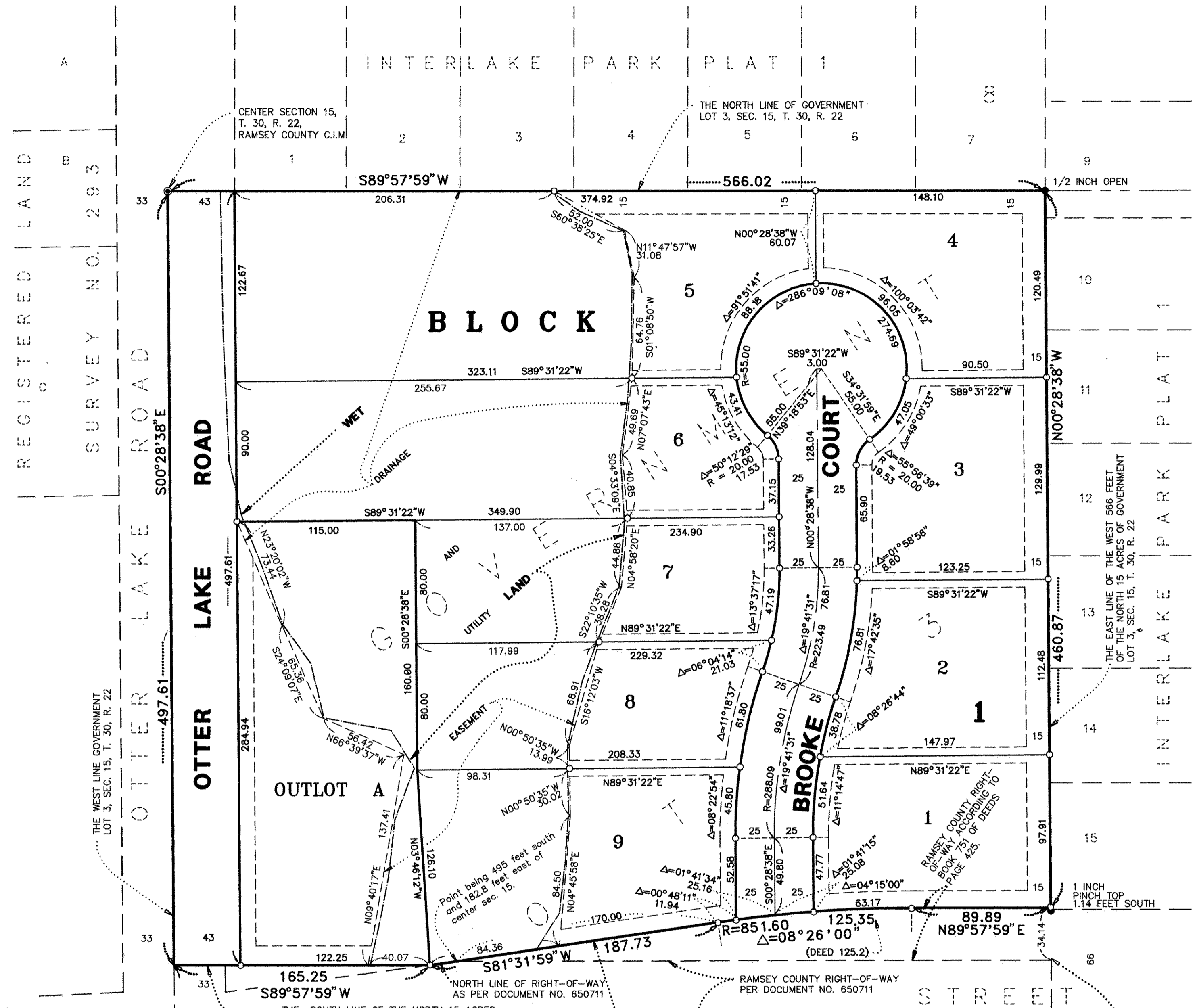
Pursuant to Minnesota Statutes, Section 383A.42, this plat has been examined and is approved this 24th day of May, 1996 and the conditions of Minnesota Statutes, Section 505.03, Subdivision 2, have been fulfilled.

David D. Claypool, L.S., Ramsey County Surveyor

County Recorder, County of Ramsey, State of Minnesota I hereby certify that this plat of TIMBERWOOD was filed in the office of the County Recorder for public record on this 29th day of May, 1996, at 3:02 o'clock P.M. and was duly filed in Book 112 of Plats, Page 10, as Document Number 2931036.

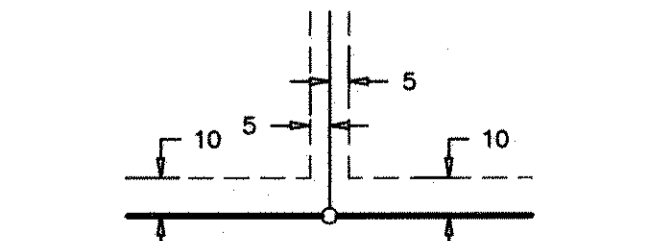
Lou McKenna, County Recorder, Deputy

TIMBERWOOD



THE DISTANCES SHOWN ALONG LOT LINES ARE THE DISTANCES OF THE LOT LINES AND NOT THE DISTANCE OF OR TO EASEMENT LINES, UNLESS OTHERWISE SHOWN.

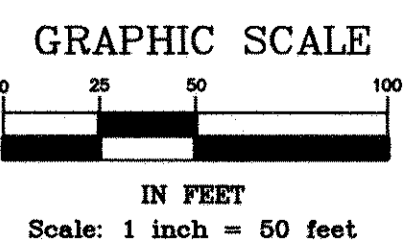
DRAINAGE AND UTILITY EASEMENTS ARE SHOWN THUS:



BEING 5 FEET IN WIDTH AND ADJOINING LOT LINES, UNLESS OTHERWISE INDICATED, AND 10 FEET IN WIDTH AND ADJOINING REAR LOT LINES AND RIGHT OF WAY LINES, UNLESS OTHERWISE SHOWN ON THIS PLAT.

ORIENTATION OF THIS BEARING SYSTEM IS BASED UPON RAMSEY COUNTY COORDINATES, NORTH AMERICAN DATUM OF 1983.

- DENOTES 1/2 INCH DIA. X 14 INCHES IN LENGTH IRON PIPE MONUMENT SET AND MARKED BY LICENSE NO. 10947.
- DENOTES RAMSEY COUNTY CAST IRON MONUMENT FOUND
- DENOTES IRON PIPE MONUMENT FOUND, DESCRIBED AS SHOWN



SOUTH QUARTER CORNER OF SECTION 15, T. 30, R. 22, RAMSEY COUNTY C.I.M.

MIDWEST Land Surveyors & Civil Engineers, Inc.