

RASPBERRY HILLS FOURTH ADDITION

COMMON INTEREST COMMUNITY NUMBER 303

KNOW ALL MEN BY THESE PRESENTS: That Raspberry Hills Partnership, a Minnesota general partnership, owner of the following described property situated in the City of Vadnais Heights, County of Ramsey, State of Minnesota:

Outlot A, Raspberry Hills Third Addition, Ramsey County, Minnesota.

Has caused the same to be surveyed and platted as RASPBERRY HILLS FOURTH ADDITION, and does hereby dedicate to the public for public use forever the cul-de-sac and drainage and utility easements as shown on this plat.

In witness whereof said Raspberry Hills Partnership, a Minnesota general partnership, has caused these presents to be signed by Robert S. Todd, a general partner, this 11th day of January, 1995.

Signed: Raspberry Hills Partnership

Robert S. Todd
Robert S. Todd, a general partner

State of Minnesota
County of Ramsey

The foregoing instrument was acknowledged before me this 11th day of January, 1995 by Robert S. Todd, a general partner of Raspberry Hills Partnership, a Minnesota general partnership, on behalf of the partnership.



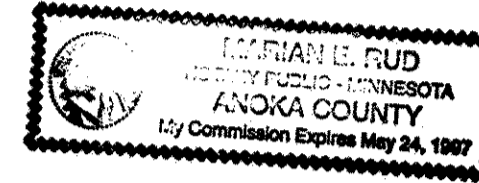
Shawster
Notary Public, Anoka County, Minnesota
My Commission Expires 1-31-2000

I hereby certify that I have surveyed and platted the property described on this plat as RASPBERRY HILLS FOURTH ADDITION; that this plat is a correct representation of the survey; that all distances are correctly shown on the plat in feet and hundredths of a foot; that all monuments will be correctly placed in the ground as shown; that the outside boundary lines are correctly designated on the plat; and there are no wet lands as defined in Minnesota Statutes, Section 505.02, Subd. 1, or public highways to be designated other than as shown on this plat.

Ernest G. Rud
Ernest G. Rud, Land Surveyor
Minnesota License No. 9808

State of Minnesota
County of Anoka

The foregoing Surveyor's Certificate was acknowledged before me this 6th day of January, 1995 by Ernest G. Rud, a Licensed Land Surveyor.



Marion E. Rud
Notary Public, Anoka County, Minnesota
My Commission Expires May 24, 1997

City of Vadnais Heights

We do hereby certify that on the 2nd day of March, 1994, the City Council of the City of Vadnais Heights, Minnesota, approved this plat. All monuments will be set as specified by the City Council and as stated on this plat, according to Minnesota Statutes, Section 505.02, Subd. 1.

Mark A. Hanks
Mayor

Gerald J. Urban
Clerk

Taxes payable in the year 1995 on the land herein described have been paid, also there are no delinquent taxes and transfer entered this 19th day of Jan, 1995.

Lou McKenna Director
Department of Property Taxation

By Rachy Bymark Deputy

Pursuant to Minnesota Statutes, Section 383A.42, this plat has been examined and is approved this 19th day of January, 1995 and the conditions of Minnesota Statutes, Section 505.03, Subdivision 2, have been fulfilled.

David D. Claypool
David D. Claypool, L.S.
Ramsey County Surveyor

County Recorder
County of Ramsey, State of Minnesota

I hereby certify that this plat of RASPBERRY HILLS FOURTH ADDITION was filed in the office of the County Recorder for public record on this 24th day of JANUARY, 1995, at 3:21 o'clock P.M. and was duly filed in Book N/A of Plats, Pages N/A and N/A, as Document Number 2851409.

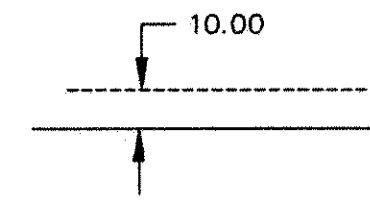
Lou McKenna, County Recorder

By _____, Deputy

RASPBERRY HILLS FOURTH ADDITION

COMMON INTEREST COMMUNITY NUMBER 303

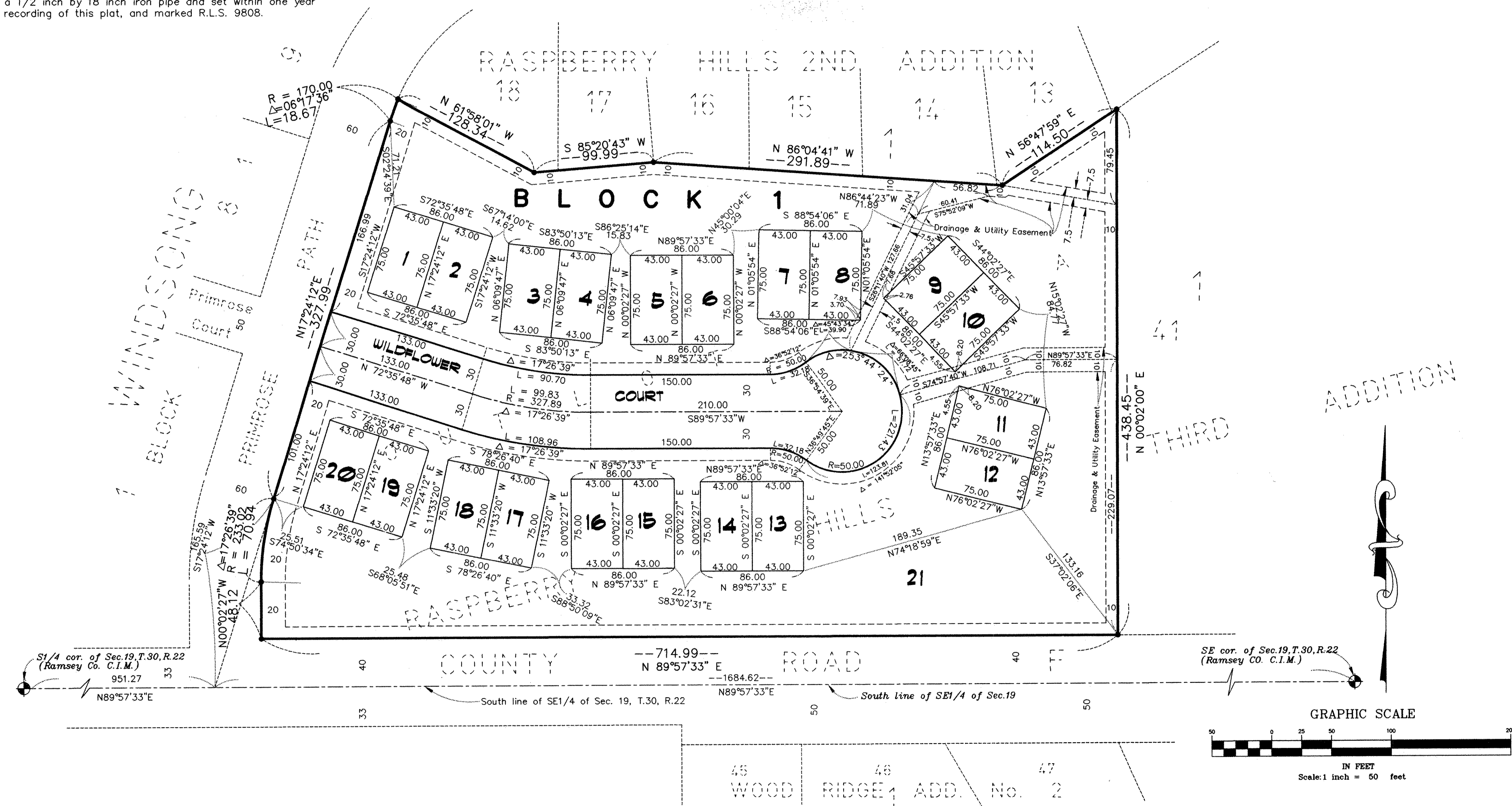
DRAINAGE & UTILITY EASEMENTS ARE SHOWN THUS:



BEING 10 FEET IN WIDTH, UNLESS OTHERWISE INDICATED, AND ADJOINING STREET LINES AND PLAT BOUNDARY LINES AS SHOWN ON THIS PLAT.

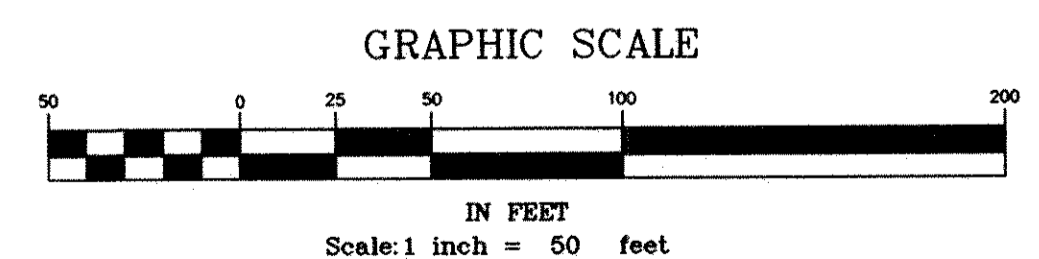
• DENOTES 1/2 INCH FOUND IRON PIPE MONUMENT MARKED R.L.S. 9808.

No monuments shown at any statute required location indicates a plat monument that will be a 1/2 inch by 18 inch iron pipe and set within one year of the recording of this plat, and marked R.L.S. 9808.



SW 1/4 cor. of Sec. 19, T. 30, R. 22 (Ramsey Co. C.I.M.) 951.27

SE 1/4 cor. of Sec. 19, T. 30, R. 22 (Ramsey Co. C.I.M.)



E. G. RUD & SONS, INC.
LAND SURVEYORS



The orientation of this bearing system is based on the South line of the Southeast Quarter of Section 19, Township 30, Range 22, Ramsey County, Minnesota, which has an assumed bearing of N 89°57'33" E.

Pursuant to Minnesota Statutes, Section 515B.2-105(a)(2) this CIC plat of RASPBERRY HILLS FOURTH ADDITION is a planned community.