

GOOSE LAKE TOWNHOMES

Copy

Know All Persons By These Presents that Goose Lake Townhomes, Inc., a Minnesota corporation, owner and Construction Mortgage Investors Co., a Minnesota corporation, mortgagee of the following described property situated in the City of White Bear Lake, Ramsey County, Minnesota:

Lots 31, 32 and 33, Richland Acres, Ramsey County, Minnesota; Together with that part of the Westerly 12 feet of Highland Avenue, vacated, lying Northerly of the Southerly line of Lot 31, extended Easterly and lying Southerly of the normal high water level of Goose Lake.

Have caused the same to be surveyed, platted and known as GOOSE LAKE TOWNHOMES and do hereby dedicate to the public for public use forever the Road and the utility easement as shown on the plat.

In witness whereof said Goose Lake Townhomes, a Minnesota corporation, has caused these presents to be signed by its proper officers this 7TH day of MAY, 1991, and said Construction Mortgage Investors Co., a Minnesota corporation, has caused these presents to be signed by its proper officer this 7TH day of MAY, 1991.

Signed: Goose Lake Townhomes, Inc.
Richard W. Fischer
Richard W. Fischer, President

Signed: Construction Mortgage Investors Co.
Ron Allar its Vice-President

State of Minnesota
County of Ramsey

The foregoing instrument was acknowledged before me this 7th day of May, 1991, by Richard W. Fischer, President and by Jim Boo, Vice-President of Goose Lake Townhomes, Inc., a Minnesota corporation, on behalf of the corporation.

Patricia A. Barry
PATRICIA A. BARRY
NOTARY PUBLIC - MINNESOTA
RAMSEY COUNTY
My Commission Expires 10-08-91

Patricia A. Barry
Notary Public, Ramsey County, Minnesota
My Commission Expires 10-08-91

State of Minnesota
County of Ramsey

The foregoing instrument was acknowledged before me this 10th day of May, 1991, by Ron Allar, Vice Pres. of Construction Mortgage Investors Co., a Minnesota corporation, on behalf of the corporation.

Raymond Polshak
RAYMOND POLSHAK
NOTARY PUBLIC - MINNESOTA
RAMSEY COUNTY
My Commission Expires 1-25-97

Raymond Polshak
Notary Public, Ramsey County, Minnesota
My Commission Expires 1-25-97

I, Ronald F. Johnson, hereby certify that I have surveyed and platted the property described in the dedication of this plat as GOOSE LAKE TOWNHOMES; that this plat is a correct representation of said survey; that all distances are correctly shown on the plat; that all monuments have been correctly placed in the ground as shown; that the outside boundary lines are correctly designated on the plat; and there are no wetlands, easements or public highways other than as shown thereon.

Ronald F. Johnson
Ronald F. Johnson
Land Surveyor
Minnesota Registration No. 12235

State of Minnesota
County of Ramsey

The Surveyor's Certificate was subscribed and sworn to before me, a Notary Public, this 7th day of May, 1991.

Patricia A. Barry
PATRICIA A. BARRY
NOTARY PUBLIC - MINNESOTA
RAMSEY COUNTY
My Commission Expires 10-08-91

Patricia A. Barry
Notary Public, Ramsey County, Minnesota
My Commission Expires 10-08-91

Approved and accepted by the City Council of the City of White Bear Lake, Minnesota, this 10TH day of MAY, 1991.

Harry Moses
Mayor

Raymond Polshak
Clerk

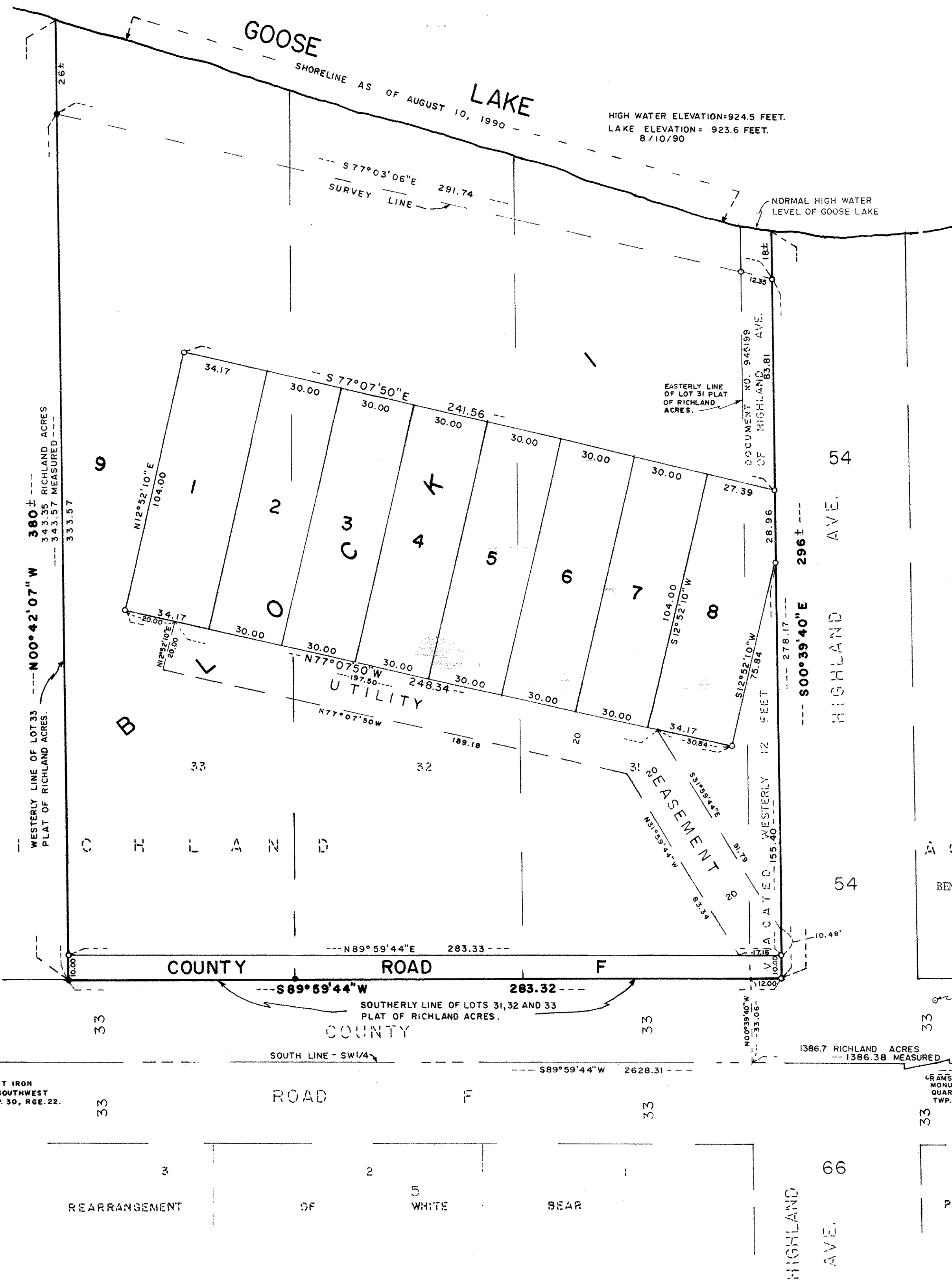
Taxes for the year 1991 on land described herein paid, no delinquent taxes and transfer entered, this 20th day of May, 1991.
Lou McKenna Director
Department of Property Assessor

Pursuant to Chapter 7, Minnesota Laws of 1976, this plat has been reviewed and approved, this 17th day of June, 1991, and the conditions of Minnesota Statutes, Section 505.03, Subdivision 2, have been fulfilled.

David D. Claypool
David D. Claypool
Ramsey County Surveyor

Registrar of Titles, County of Ramsey, State of Minnesota
I hereby certify that this plat of GOOSE LAKE TOWNHOMES was filed in this office this 18 day of JUNE, 1991, at 8:00 o'clock A. M., and was filed in Book 38 of Plate, Page 48, as Document No. 950266.

By _____ Deputy
Lou McKenna, Registrar of Titles



NORTH
ORIENTATION OF THIS BEARING SYSTEM IS BASED ON AN ASSUMED DATUM.

SCALE IN FEET
0 5 10 20 30 50
SCALE: 1 INCH = 30 FEET

- DENOTES 1/2 INCH IRON PIPE MONUMENT SET, MARKED WITH A PLASTIC CAP INSCRIBED RLS 12235.
 - DENOTES IRON MONUMENT FOUND.
- ALL MONUMENTS HAVE BEEN SET PURSUANT TO MINNESOTA STATUTE SECTION 505.02 SUBDIVISION 1 AS AMENDED.

BENCHMARK: FIRE HYDRANT AT NORTHEAST CORNER OF COUNTY ROAD F AND HIGHLAND AVE. ELEVATION = 943.71 FEET. BASED ON CITY OF WHITE BEAR LAKE DATUM.

RAMSEY COUNTY CAST IRON MONUMENT FOUND, SOUTHWEST CORNER SEC. 23, TWP. 30, RGE. 22.
RAMSEY COUNTY CAST IRON MONUMENT FOUND, SOUTH QUARTER CORNER SEC. 23, TWP. 30, RGE. 22.

REARRANGEMENT OF WHITE BEAR PARK