

CAVES WOODS AND PONDS 2ND ADDITION

MAPLE WOODS ESTATES 2

Know All Persons By These Presents that Ed Cave & Sons, Inc., a Minnesota Corporation, fee owner, and North Star State Bank of Roseville, a Minnesota Corporation, mortgagee, of the following described property situated in the City of Maplewood, Ramsey County, Minnesota:

- The Northwest quarter of the Northwest quarter of the Northwest quarter of Section 24, Township 29, Range 22, Ramsey County, Minnesota except the two following described tracts of land:
- 1. the East 100 feet of the West 499 feet of the North 168 feet
- 2. CAVES WOODS AND PONDS, according to the recorded plat thereof, Ramsey County, Minnesota.

Have caused the same to be surveyed, platted and known as CAVES WOODS AND PONDS 2ND ADDITION and do hereby dedicate to the public for public use forever the road, street, and drainage and utility easements as shown on the plat.

Ed Cave & Sons, Inc., a Minnesota Corporation, has caused these presents to be signed by its proper officers this 11th day of May, 1990.

Signed: Ed Cave & Sons, Inc.
Samuel S. Cave
 Samuel S. Cave, President
Diane C. Cave
 Diane C. Cave, Secretary

North Star State Bank of Roseville, a Minnesota Corporation, has caused these presents to be signed by its proper officer and its corporate seal to be hereunto affixed this 11 day of May, 1990.

Signed: North Star State Bank of Roseville
S. D. Hawkins
 S. D. Hawkins, Vice President

STATE OF MINNESOTA
COUNTY OF RAMSEY

The foregoing instrument was acknowledged before me this 11th day of May, 1990 by Samuel S. Cave, President and by Diane C. Cave, Secretary of Ed Cave & Sons, Inc., a Minnesota Corporation, on behalf of the corporation.

STATE OF MINNESOTA
COUNTY OF RAMSEY
Robert E. Pieschke
 Notary Public, Ramsey County, Minnesota
 My Commission Expires 2-1-95

The foregoing instrument was acknowledged before me this 11th day of May, 1990 by S. D. Hawkins, Vice President of North Star State Bank of Roseville, a Minnesota Corporation, on behalf of the corporation.

Karen M. Nelson
 Notary Public, Ramsey County, Minnesota
 My Commission Expires _____

I, Rodney H. Halvorson, hereby certify that I have surveyed and platted the property described in the dedication of this plat as CAVES WOODS AND PONDS 2ND ADDITION; that this plat is a correct representation of said survey; that all distances are correctly shown on the plat; that all monuments have been correctly placed in the ground as shown; that the outside boundary lines are correctly designated on the plat; and there are no wetlands or public highways other than as shown thereon.

Rodney H. Halvorson
 Rodney H. Halvorson, Land Surveyor
 Minnesota Registration No. 10947

STATE OF MINNESOTA
COUNTY OF Anoka

The Surveyor's Certificate was subscribed and sworn to before me, a Notary Public, this 9th day of May, 1990.

Diane S. Halvorson
 Notary Public, Ramsey County, Minnesota
 My Commission Expires 7-30-93

Approved and accepted by the City Council of the City of Maplewood, Minnesota, this 31st day of May, 1990.

Thomas J. Anderson
 Mayor
Louise A. Anderson
 Clerk

Taxes for the year 1990 on land described herein paid, no delinquent taxes and transfer entered, this 4th day of JUNE, 1990.

Tom McKenna Director By *Bridget Johnson* Deputy
 Department of Property Taxation

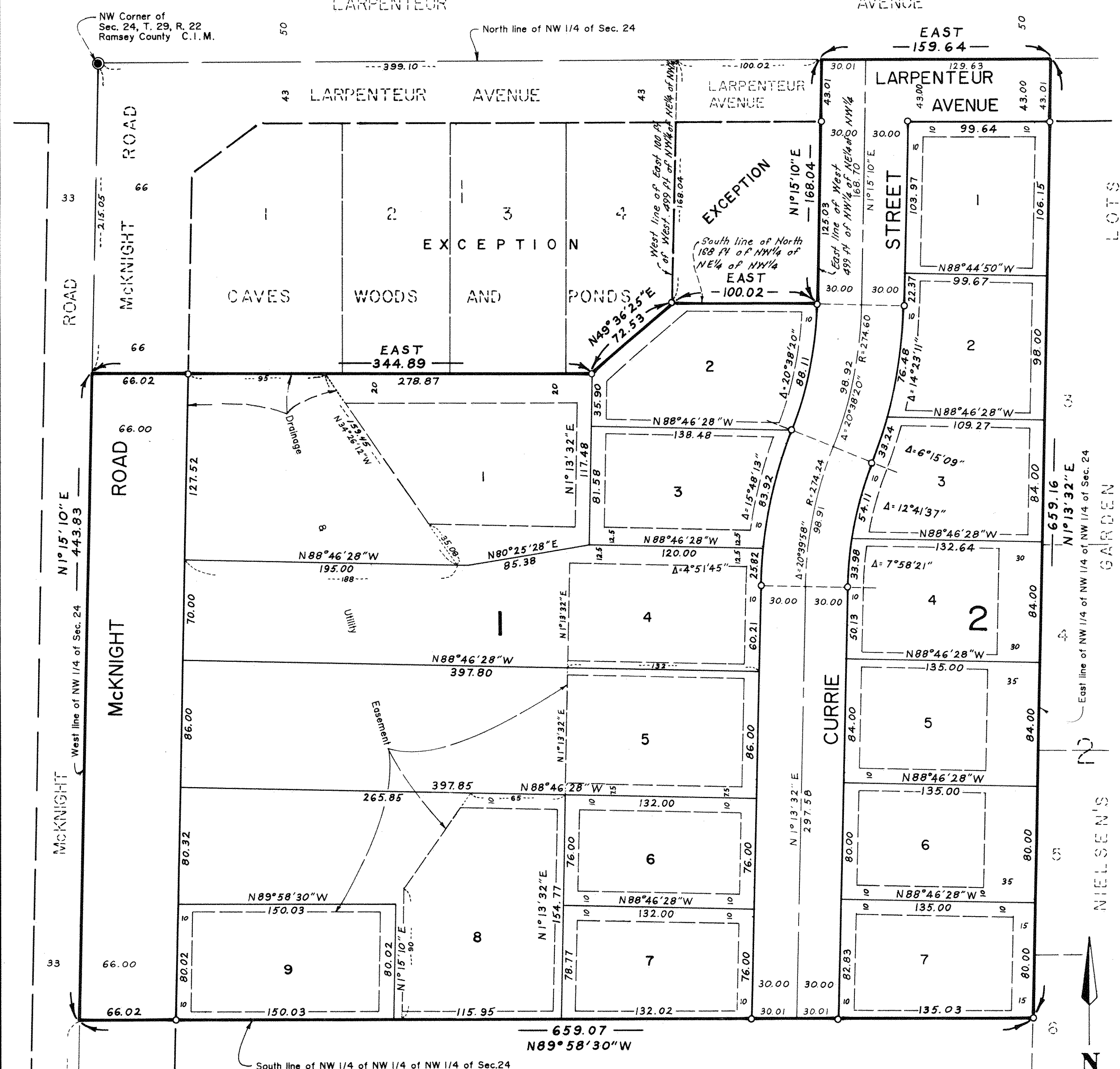
Pursuant to Chapter 7, Minnesota Laws of 1976, this plat has been reviewed and approved, this 7th day of JUNE, 1990, and the conditions of Minnesota Statutes, Section 505.03, Subdivision 2, have been fulfilled.

David D. Claypool
 David D. Claypool, Ramsey County Surveyor

County Recorder, County of Ramsey, State of Minnesota

I, hereby certify that this plat of CAVES WOODS AND PONDS 2ND ADDITION was filed in this office this 11 day of JUNE, 1990, at 9:51 o'clock A.M. and was filed in Book 106 of Plats, Page 5, as Document No. 2549111.

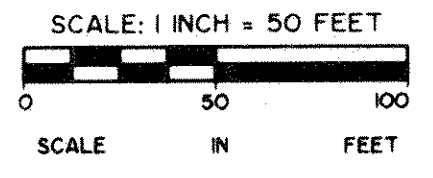
By _____ Deputy
 Lou McKenna, County Recorder



NW Corner of Sec. 24, T. 29, R. 22, Ramsey County C.I.M.

W 1/4 Corner of Sec. 24, T. 29, R. 22, Ramsey County C.I.M.

Drainage and Utility easements are shown thus:
 Being 5 feet in width and adjoining lot lines, and 10 feet in width and adjoining rear lot lines, as shown on the plat, unless otherwise indicated.



MIDWEST
 Land Surveyors & Civil Engineers, Inc.

O Denotes Iron Monument Set Bearings Are On An Assumed Datum

Located in the Northwest quarter of Section 24, Township 29 North, Range 22 West