

# RIVERVIEW INDUSTRIAL PARK NO. 12

Know All Persons By These Presents that Port Authority of the City of Saint Paul, a Minnesota corporation, owner of the following described property situated in the City of Saint Paul, Ramsey County, Minnesota:

Tracts A,B,C,D,E, and F, Registered Land Survey No. 399, files of Registrar of Titles, County of Ramsey; and Tracts B and C, Registered Land Survey No. 369, files of Registrar of Titles, County of Ramsey;

and the City of Saint Paul, a Minnesota Municipal corporation, owner of the following described property situated in the City of Saint Paul, Ramsey County, Minnesota:

Lots 9 thru 14, inclusive, Block 3, Second Addition to Brooklynd, St. Paul, Minn. and all vacated streets, alleys and ways contiguous to the herein above described lands;  
Lots 8 thru 11, inclusive, Block 4, Second Addition to Brooklynd, St. Paul, Minn. and all vacated streets, alleys and ways contiguous to the herein above described lands;

Part of Lots 8, 15 and 16, Block 3 and part of Lot 7, Block 4, Second Addition to Brooklynd, St. Paul, Minn. and all that part of vacated streets, alleys and ways contiguous to the herein above described lands, all of which lies Westerly of the following described line:

Beginning at a point on the South line of Lot 15, Block 2, said Second Addition to Brooklynd, St. Paul, Minn. distant 129.4 feet East from the Southwest corner of said Block 2; thence Southerly to a point on the North line of said Block 3 distant 136.2 feet East from the Northwest corner of said Block 3; thence Southerly to a point on the South line of said Block 3 distant 163.3 feet East from the Southwest corner of said Block 3; thence Southerly to a point on the North line of said Block 4 distant 168.6 feet East from the Northwest corner of said Block 4; thence Southerly to a point on the South line of Lot 17, said Block 4, distant 212.29 feet East from the West line of said Block 4, as measured along the extended South Line of Lots 14, 15, 16 and 17, in said Block 4, and there terminating.

Have caused the same to be surveyed, platted and known as RIVERVIEW INDUSTRIAL PARK NO. 12 and do hereby dedicate to the public for public use forever the circle as shown on the plat.

Port Authority of the City of Saint Paul, a Minnesota corporation, has caused these presents to be signed by its proper officers and its corporate seal to be hereunto affixed this 20th day of March, 1990.

Signed: Port Authority of the City of Saint Paul  
Victor P. Reim its President  
Alvin Gustafson its Secretary

City of Saint Paul, a Minnesota Municipal corporation, has caused these presents to be signed by its mayor and clerk and its corporate seal to be hereunto affixed this 19th day of March, 1990.

Signed: City of Saint Paul  
James J. Adams Mayor  
Albert B. Olson Clerk

STATE OF MINNESOTA)  
COUNTY OF RAMSEY )  
The foregoing instrument was acknowledged before me this 20th day of March, 1990, by Victor P. Reim, President and by Alvin Gustafson, Secretary of Port Authority of the City of Saint Paul, a Minnesota corporation, on behalf of the corporation.

David M. Olson  
Notary Public, Ramsey County, Minnesota  
My Commission Expires Sept. 18, 1990

STATE OF MINNESOTA)  
COUNTY OF RAMSEY )  
The foregoing instrument was acknowledged before me this 19th day of March, 1990, by James J. Adams, Mayor, and by Albert B. Olson, Clerk, of the City of Saint Paul, a Minnesota Municipal corporation, on behalf of the corporation.

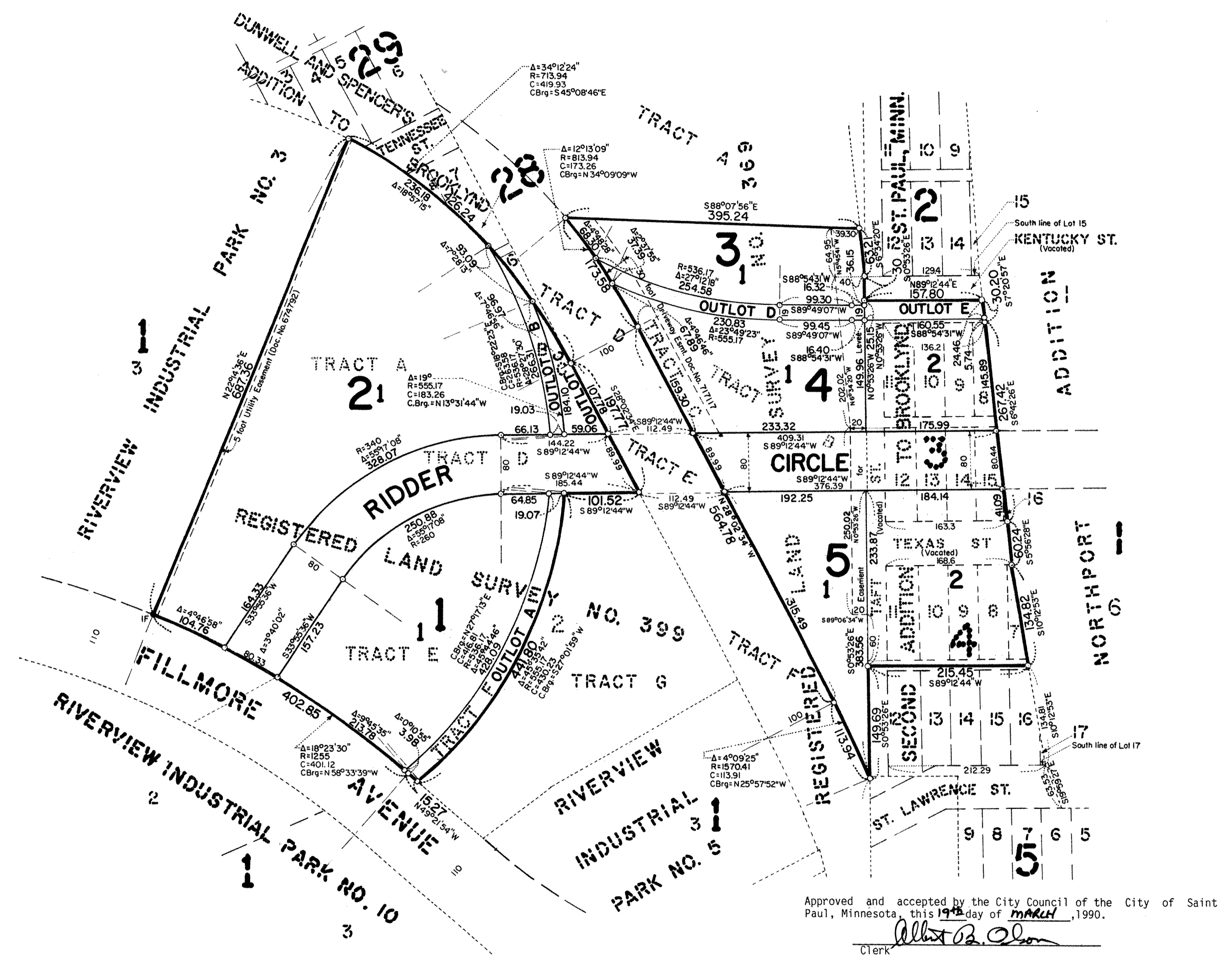
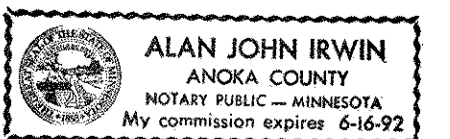
Trudy M. Daehsel  
Notary Public, Ramsey County, Minnesota  
My Commission Expires 10-15-90

I, Donald W. Schmidt, hereby certify that I have surveyed and platted the property described in the dedication of this plat as RIVERVIEW INDUSTRIAL PARK NO. 12; that this plat is a correct representation of said survey; that all distances are correctly shown on the plat; that all monuments have been correctly placed in the ground as shown; that the outside boundary lines are correctly designated on the plat; and there are no wet lands or public highways other than as shown thereon.

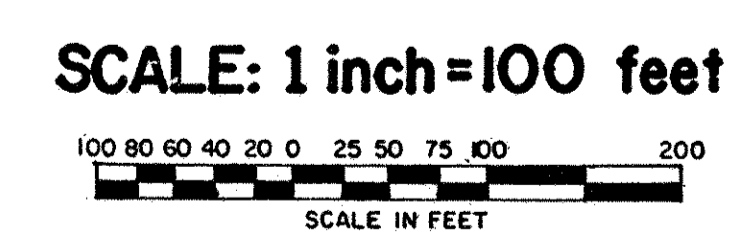
Donald W. Schmidt  
Donald W. Schmidt, Land Surveyor  
Minnesota Registration No. 10459

STATE OF MINNESOTA)  
COUNTY OF RAMSEY )  
The Surveyor's Certificate was subscribed and sworn to before me, a Notary Public, this 16th day of MARCH, 1990.

Alan John Irwin  
Alan John Irwin  
Notary Public, Anoka County, Minnesota  
My Commission Expires June 16, 1992



LOCATED IN THE NE 1/4,  
SECTION 5, T 28N, R22W  
CITY OF SAINT PAUL  
RAMSEY COUNTY, MINNESOTA



• Denotes Iron Monument found in place.  
○ Denotes Iron Pipe Monument set and marked by Registration No. 10459.  
All distances are to hundredths of a foot; thus, 19 denotes 19.00 feet.  
All distances on curves are arc lengths.  
Bearings are on an assumed datum.

TORRENS;  
Book No. 38, Page No. 24, ON THIS 3<sup>RD</sup> DAY OF MARCH, 1990, AT 10:00 O'clock A.M. AS DOCUMENT NO. 918736

GEORGI-SCHMIDT & ASSOC. INC.  
Land Surveyors  
3092 N. Lexington Ave. 483-4408  
ROSEVILLE, MINNESOTA 55113

Approved and accepted by the City Council of the City of Saint Paul, Minnesota, this 19th day of MARCH, 1990.  
Albert B. Olson  
Clerk

Taxes for the year 1990 on land described herein paid, no delinquent taxes and transfer entered, this 19th day of March, 1990.  
J. M. K. Director By B. J. P. Deputy  
Department of Property Taxation

Pursuant to Chapter 7, Minnesota Laws of 1976, this plat has been reviewed and approved, this 19th day of MARCH, 1990, and the conditions of Minnesota Statutes, Section 505.03, Subdivision 2; have been fulfilled.  
David D. Claypool  
David D. Claypool, Ramsey County Surveyor

County Recorder, County of Ramsey, State of Minnesota  
I hereby certify that this plat of RIVERVIEW INDUSTRIAL PARK NO. 12 was filed in this office this 3RD day of APRIL, 1990, at 8:22 o'clock A. M. and was filed in Book 105 of Plats, Page 46, as Document No. 2539543.  
Lou McKenna, County Recorder