

BRIGHTWOOD TOWNHOMES

Know All Persons By These Presents that CBA Residential Development, LTD., a Minnesota corporation, owner of the following described property situated in the City of New Brighton, Ramsey County, Minnesota:

Lots 1 and 2, Block 1, Leier Estates and that part of Northwest Quarter of Section 29, Township 30, Range 23, Ramsey County, Minnesota, described as follows: The South 75 feet of the North 185.96 feet of the East 208 feet of the North Half of the Northeast Quarter of the Northwest Quarter and together with the South 77.96 feet of the North 110.96 feet of the West 125 feet of the East 158 feet of the Northeast Quarter of the Northwest Quarter and together with the West 137.52 feet of the East 295.52 feet of the North 110.96 feet of said Northwest Quarter.

Have caused the same to be surveyed, platted and known as BRIGHTWOOD TOWNHOMES and do hereby dedicate to the public for public use forever the avenues, street and drainage and utility easements as shown on the plat.

CBA Residential Development, LTD., a Minnesota corporation, has caused these presents to be signed by its proper officer this 25 day of July, 1989.

Signed: CBA Residential Development, LTD.
Jerry R. Svee
Jerry R. Svee, President

STATE OF MINNESOTA)
COUNTY OF Hennepin)
The foregoing instrument was acknowledged before me this 25th day of July, 1989, by Jerry R. Svee, President of CBA Residential Development, LTD., a Minnesota corporation, on behalf of the corporation.
Lincoln K. Kallen
Notary Public, Hennepin County, Minnesota
My Commission Expires 3/25/92

I, Gary R. Harris, hereby certify that I have surveyed and platted the property described in the dedication of this plat as BRIGHTWOOD TOWNHOMES; that this plat is a correct representation of said survey; that all distances are correctly shown on the plat; that all monuments have been correctly placed in the ground as shown; that the outside boundary lines are correctly designated on the plat; and there are no wet lands, easements or public highways other than as shown thereon.
Gary R. Harris
Gary R. Harris, Land Surveyor
Minnesota Registration No. 10943

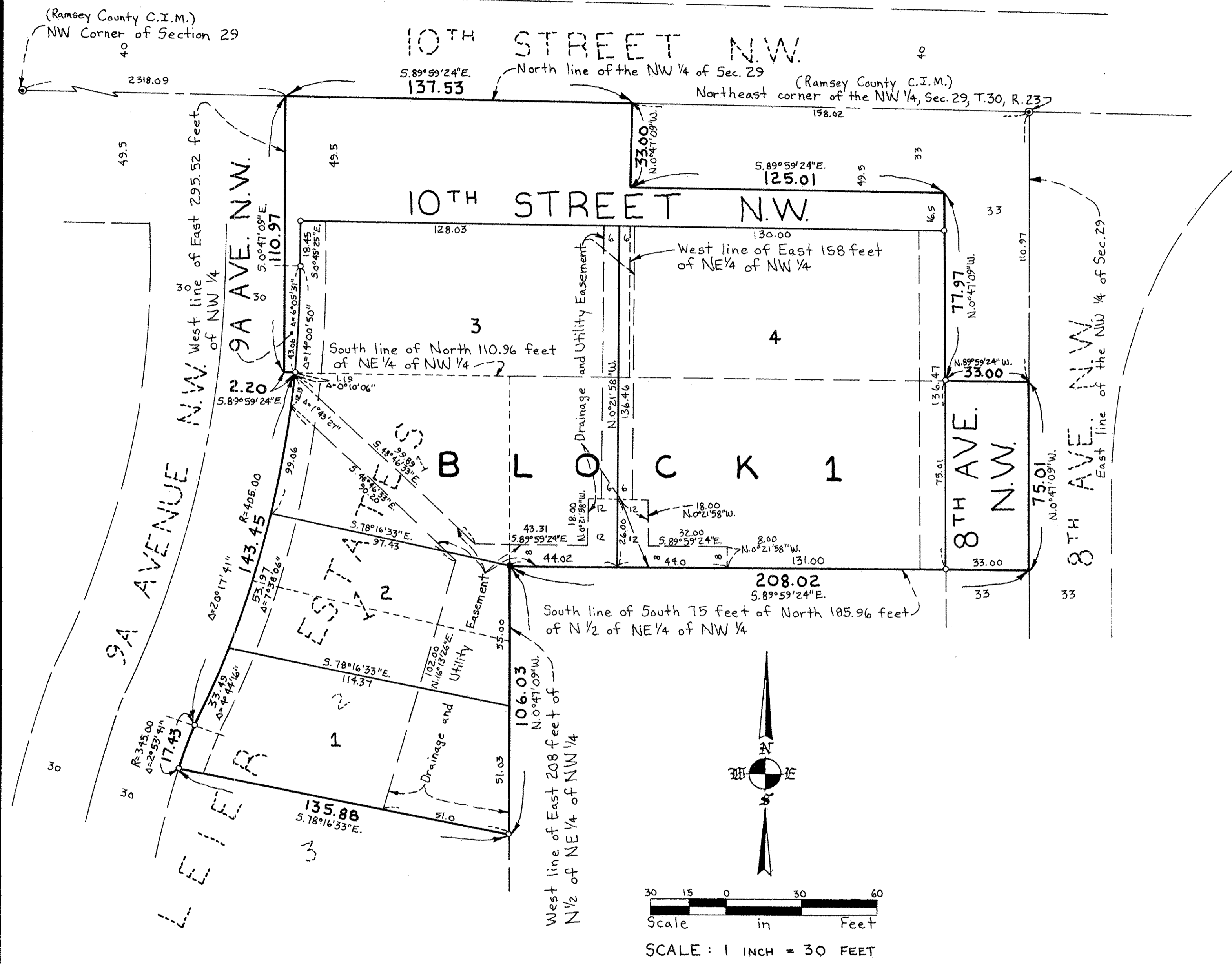
STATE OF MINNESOTA)
COUNTY OF Dakota)
The Surveyor's Certificate was subscribed and sworn to before me, a Notary Public, this 20th day of March, 1989.
Doris S. Wilson
Notary Public, Dakota County, Minnesota
My Commission Expires 10-25-93

Approved and accepted by the City Council of the City of New Brighton, Minnesota, this 10th day of November, 1987.
Robert J. Peak Mayor
Markon Clerk

Taxes for the year 1989 on land described herein paid, no delinquent taxes and transfer entered, this 28th day of July, 1989.
Lou Mc Kenna Director
Department of Property Taxation
By H. Bymark Deputy

Pursuant to Chapter 7, Minnesota Laws of 1976, this plat has been reviewed and approved, this 31st day of July, 1989, and the conditions of Minnesota Statutes, Section 505.03, Subdivision 2, have been fulfilled.
David D. Claypool
David D. Claypool, R.L.S.
Ramsey County Surveyor

County Recorder, County of Ramsey, State of Minnesota
I hereby certify that this plat of BRIGHTWOOD TOWNHOMES was filed in this office this 31st day of July, 1989, at 3:44 o'clock P. M. and was filed in Book 104 of Plats, Page 45, as Document Number 2502346.
Lou McKenna, County Recorder
By _____ Deputy



DRAINAGE AND UTILITY EASEMENTS ARE SHOWN THUS:

Being 10 feet in width, unless otherwise indicated, as shown on this plat.

- Denotes iron monument found in place
- o Denotes iron monument set

The North line of the Northwest 1/4, of Section 29, Township 30, Range 23, has an assumed bearing of S. 89° 59' 24" E.

