

HAZELWOOD HEIGHTS

Know All Persons By These Presents that Ed Cave & Sons, Inc., a Minnesota Corporation, fee owner, and North Star State Bank of Roseville, a Minnesota Corporation, mortgagee, of the following described property situated in the City of Maplewood, Ramsey County, Minnesota:

The West 578 feet of the South 1310 feet of the Southwest quarter of the Southeast quarter of Section 3, Township 29, Range 22, except the North 800 feet and except the West 264 feet of the South 330 feet thereof all in Section 3, Township 29, Range 22, Ramsey County, Minnesota.

Have caused the same to be surveyed, platted and known as HAZELWOOD HEIGHTS and do hereby dedicate to the public for public use forever the road, avenue, court, and drainage and utility easements as shown on the plat.

Ed Cave & Sons, Inc., a Minnesota Corporation, has caused these presents to be signed by its proper officers this 7th day of July, 1989.

Signed: Ed Cave & Sons, Inc.

Samuel S. Cave
Samuel S. Cave, President

Diane C. Cave
Diane C. Cave, Secretary

North Star State Bank of Roseville, a Minnesota Corporation, has caused these presents to be signed by its proper officer and its corporate seal to be hereunto affixed this 11 day of July, 1989.

Signed: North Star State Bank of Roseville

S.D. Hawkins
S.D. Hawkins, Vice President

STATE OF MINNESOTA
COUNTY OF RAMSEY

The foregoing instrument was acknowledged before me this 7th day of July, 1989 by Samuel S. Cave, President and by Diane C. Cave, Secretary of Ed Cave & Sons, Inc., a Minnesota Corporation, on behalf of the corporation.

Robert E. Pieschke
NOTARY PUBLIC-MINNESOTA
DAKOTA COUNTY
My Comm. Expires Feb. 1, 1995

Robert E. Pieschke
Notary Public, Ramsey County, Minnesota
My Commission Expires 2-1-95

STATE OF MINNESOTA
COUNTY OF RAMSEY

The foregoing instrument was acknowledged before me this 11 day of July, 1989 by S. D. Hawkins, Vice President of North Star State Bank of Roseville, a Minnesota Corporation, on behalf of the corporation.

Karen M. Nelson
NOTARY PUBLIC-MINNESOTA
RAMSEY COUNTY
My Commission Expires July 19, 1994

Karen M. Nelson
Notary Public, Ramsey County, Minnesota
My Commission Expires 7-19-94

I, Rodney H. Halvorson, hereby certify that I have surveyed and platted the property described in the dedication of this plat as HAZELWOOD HEIGHTS; that this plat is a correct representation of said survey; that all distances are correctly shown on the plat; that all monuments have been correctly placed in the ground as shown; that the outside boundary lines are correctly designated on the plat; and there are no wetlands, or public highways other than as shown thereon.

Rodney H. Halvorson
Rodney H. Halvorson, Land Surveyor
Minnesota Registration No. 10947

STATE OF MINNESOTA
COUNTY OF Anoka

The Surveyor's Certificate was subscribed and sworn to before me, a Notary Public, this 6th day of July, 1989.

Lawrence J. Olson
LAWRENCE J. OLSON
NOTARY PUBLIC-MINNESOTA
HENNEPIN COUNTY
My Commission Expires Jan. 8, 1994

Lawrence J. Olson
Notary Public, Hennepin County, Minnesota
My Commission Expires 1-8-94

Approved and accepted by the City Council of the City of Maplewood, Minnesota, this 6th day of July, 1989.

John Swanson, Mayor Louise E. Auslin, Clerk

Taxes for the year 1989 on land described herein paid, no delinquent taxes and transfer entered, this 10th day of July, 1989.

Lou McKenna Director By Stephanie Stoffel Deputy
Department of Property Taxation

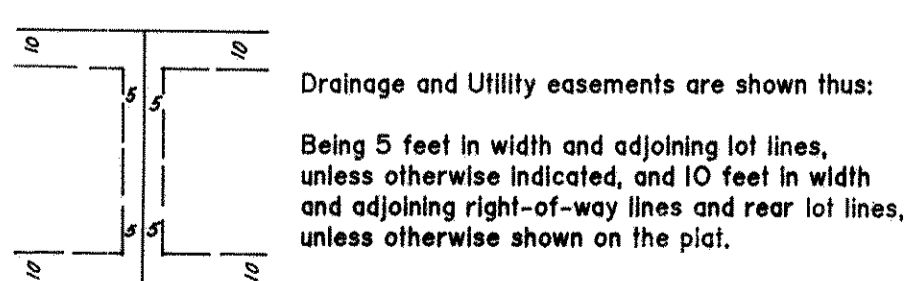
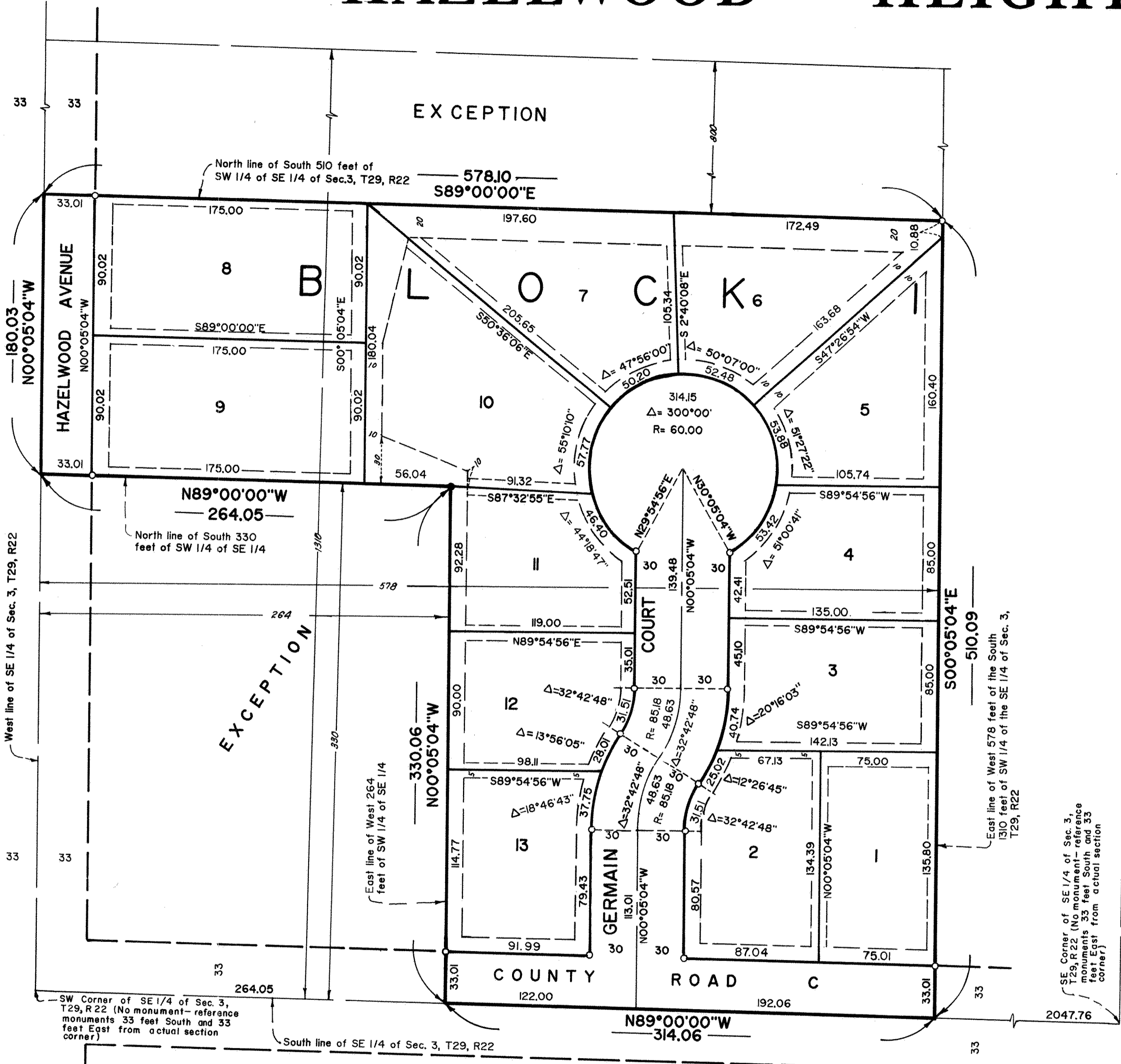
Pursuant to Chapter 7, Minnesota Laws of 1976, this plat has been reviewed and approved, this 27th day of July, 1989, and the conditions of Minnesota Statutes, Section 505.03, Subdivision 2, have been fulfilled.

David D. Claypool
David D. Claypool, Ramsey County Surveyor

County Recorder, County of Ramsey, State of Minnesota

I, hereby certify that this plat of HAZELWOOD HEIGHTS was filed in this office this 28 day of July, 1989, at 12:39 o'clock P.M. and was filed in Book 104 of Plats, Page 43, as Document No. 2502097.

By _____ Deputy
Lou McKenna, County Recorder



SCALE: 1 INCH = 50 FEET



● Denotes Iron Monument Found
○ Denotes Iron Monument Set
Bearings shown are on an assumed datum