

# MOORE'S OAKWOOD SECOND ADDITION

Know All Persons By These Presents that J. W. Moore, Inc., a Minnesota Corporation, fee owner of the following described property situated in the City of Vadnais Heights, Ramsey County, Minnesota:

That part of Lots 46, 47, 48, 49, 50, and 51, OAK CREST, Ramsey Co., Minn. lying south of the North 400 feet of said lots;

Lots 46A, 47A, 48A, 49A and 50A, OAK CREST, Ramsey Co., Minn.;

The South 928.80 feet of the North 1328.80 feet of Lots 52, 53 and 54 OAK CREST, Ramsey Co., Minn.;

The North 1328.80 feet of Lots 55 and 56, OAK CREST, Ramsey Co., Minn.;

The East Half of Lot 10A, OAK CREST, Ramsey Co., Minn.;

Lot 11A, except the East 109 feet, OAK CREST, Ramsey Co., Minn.;

Tract H, Registered Land Survey No. 334, files of the Registrar of Titles, County of Ramsey;

Outlot F, MOORE'S OAKWOOD ADDITION;

All of vacated North Oak Drive according to the plat of OAK CREST, Ramsey Co., Minn. lying west of a line drawn between the southeast corner of Lot 46, OAK CREST, Ramsey Co., Minn. and the northeast corner of Lot 46A, OAK CREST, Ramsey County, Minn. and lying east of a line drawn between the southwest corner of Lot 51, OAK CREST, Ramsey Co., Minn. and the northwest corner of Tract H, Registered Land Survey No. 334, files of the Registrar of Titles, County of Ramsey.

Has caused the same to be surveyed, platted and known as MOORE'S OAKWOOD SECOND ADDITION and does hereby dedicate to the public for public use forever the Drive, Court and drainage and utility easements as shown on the plat.

In witness whereof said J. W. Moore, Inc., a Minnesota Corporation, has caused these presents to be signed by its proper officer this 1st day of June, 1988.

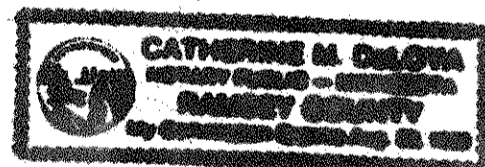
Signed:

J. W. Moore, Inc.

Jeffrey W. Moore  
Jeffrey W. Moore, President

STATE OF MINNESOTA  
COUNTY OF RAMSEY

The foregoing instrument was acknowledged before me this 1st day of June, 1988, by Jeffrey W. Moore, President of J. W. Moore, Inc., a Minnesota Corporation, on behalf of the corporation.



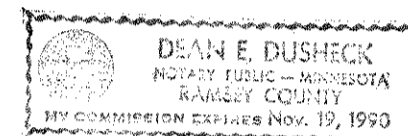
Catherine M. DeLoza  
Notary Public, Ramsey County, Minnesota  
My Commission Expires Aug. 29, 1989

I, Charles R. Winden, hereby certify that I have surveyed and platted the property described in the dedication of this plat as MOORE'S OAKWOOD SECOND ADDITION; that this plat is a correct representation of said survey; that all distances are correctly shown on the plat; that all monuments have been correctly placed in the ground as shown; that the outside boundary lines are correctly designated on the plat; and there are no wet lands or public highways other than as shown thereon.

Charles R. Winden  
Charles R. Winden, Land Surveyor  
Minnesota Registration No. 7726

STATE OF MINNESOTA  
COUNTY OF RAMSEY

The Surveyor's Certificate was subscribed and sworn to before me, a notary public, this 18th day of April, 1988.



Dean E. Dusheck  
Notary Public, Ramsey County, Minnesota  
My Commission Expires Nov. 19, 1990

Approved and accepted by the City Council of the City of Vadnais Heights, Minnesota, this 3rd day of May, 1988.

David J. Hansen  
acting Mayor

Merald J. Urban  
Clerk

Pursuant to Chapter 7, Minnesota Laws of 1976, this plat has been reviewed and approved, this 1st day of June, 1988, and the conditions of Minnesota Statutes, Section 505.03, Subdivision 2, have been fulfilled.

David D. Claypool  
David D. Claypool  
Acting Ramsey County Surveyor

Taxes for the year 1988 on land described herein paid, no delinquent taxes and transfer entered, this 1st day of June, 1988.

Don McKenna Director By D. McDonald Deputy  
Department of Property Taxation

Registrar of Titles, County of Ramsey, State of Minnesota

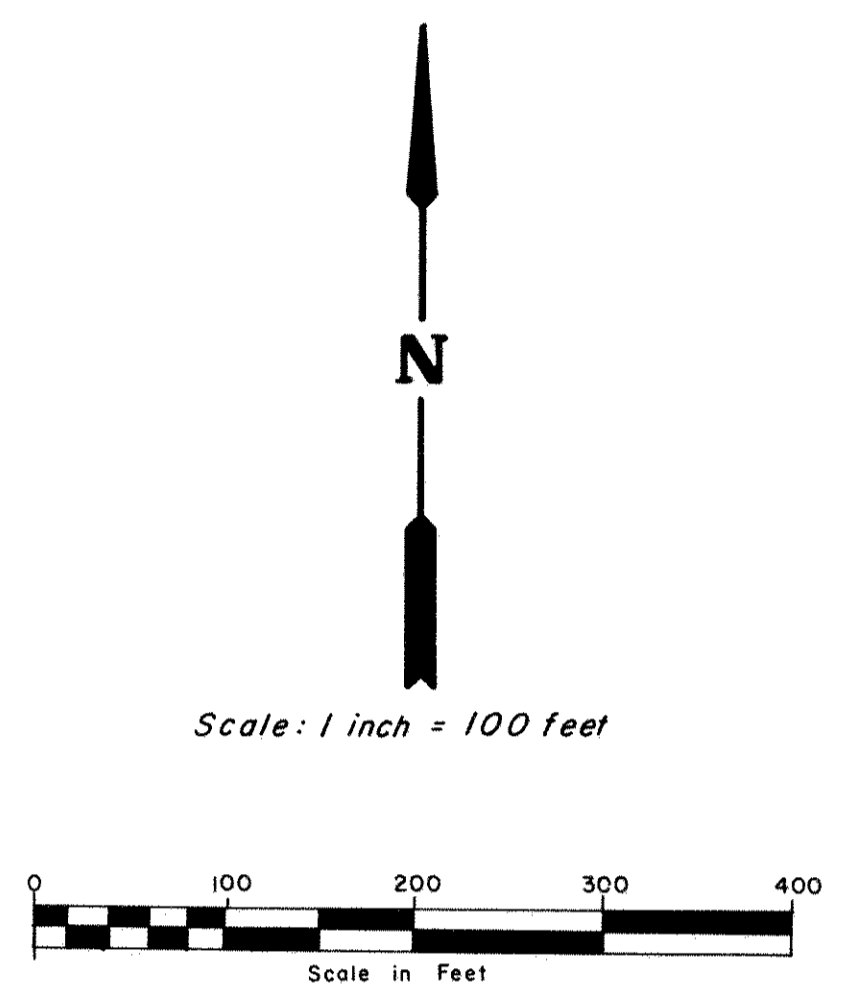
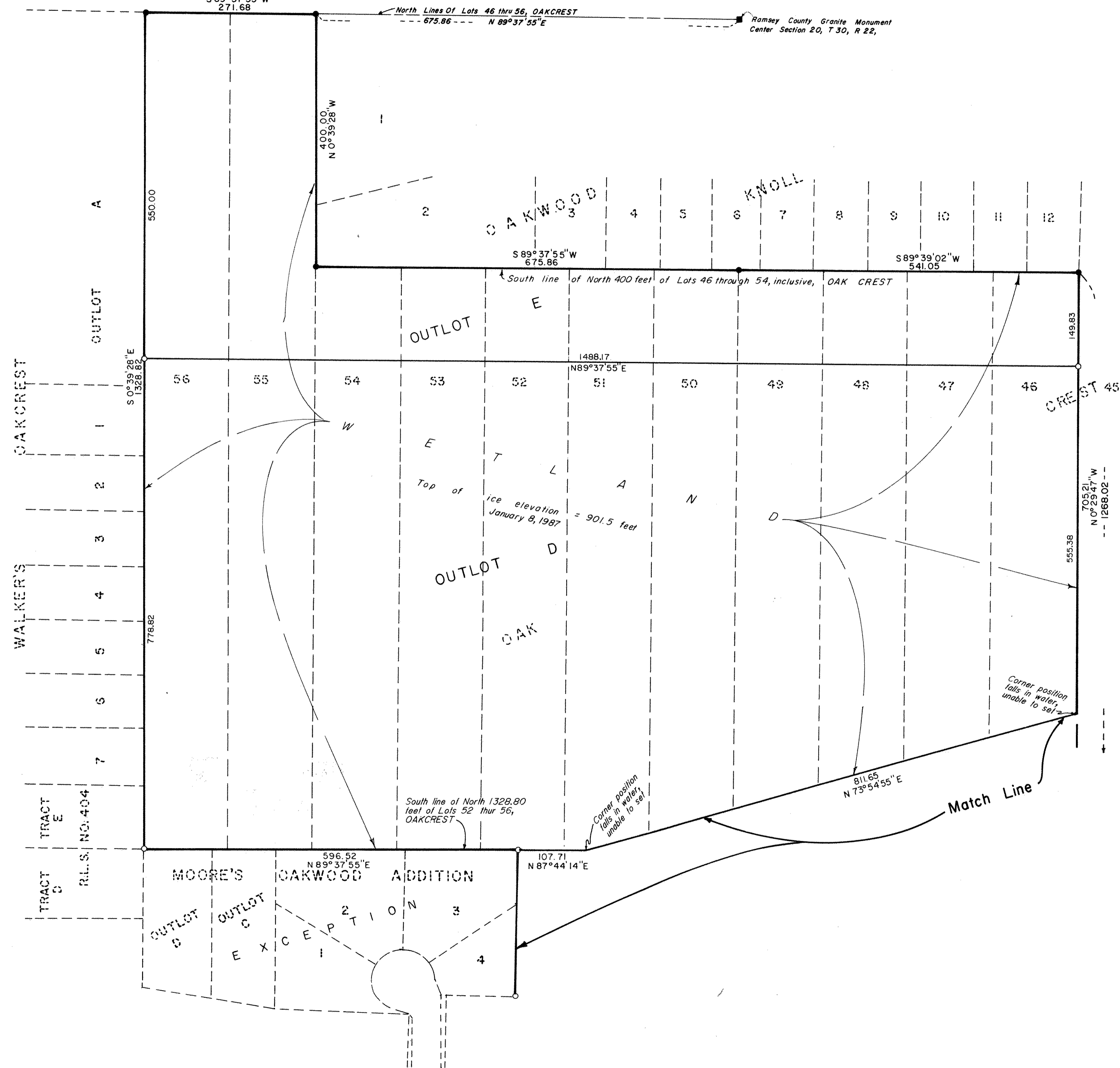
I hereby certify that this plat of MOORE'S OAKWOOD SECOND ADDITION was filed in this office this 8th day of June, 1988, at 10 o'clock A.M., and was filed in Book 37 of Plats, Pages 18, 19 and 20 as Document No. 870599.

By \_\_\_\_\_ Deputy  
John C. McLaughlin, Registrar of Titles

Prepared By:  
**C.R. WINDEN & ASSOCIATES, INC.**  
LAND PLANNING, SURVEYS & SITE DESIGN

GREENHAVEN 3RD ADDITION  
PARK (270.00 OAKCREST)  
S 89° 37' 55" W  
271.68

# MOORE'S OAKWOOD SECOND ADDITION



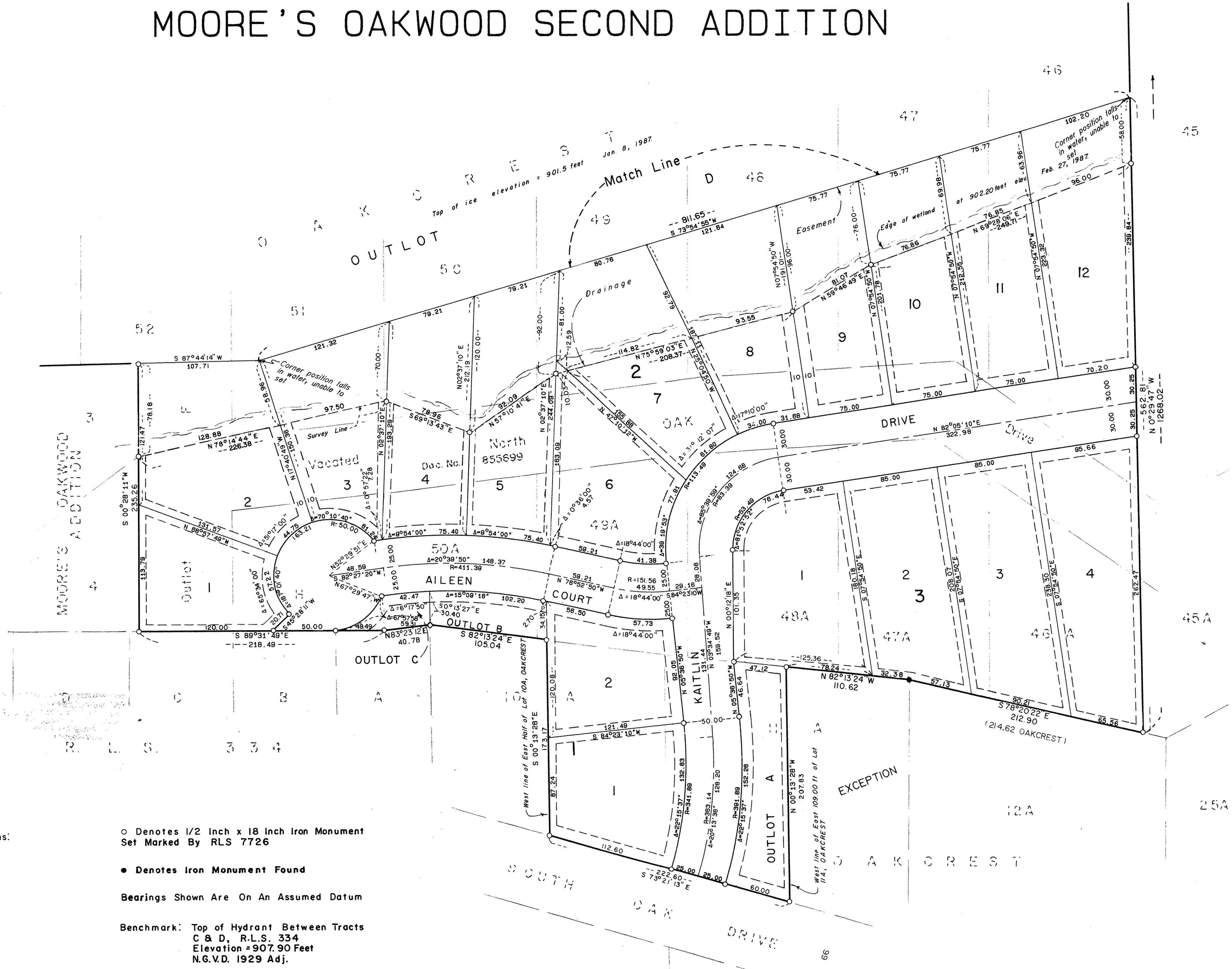
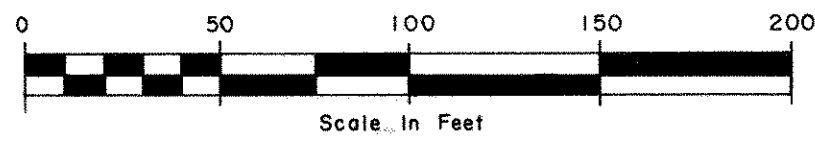
- Denotes 1/2 Inch x 18 Inch Iron Monument Set Marked By RLS 7726
- Denotes Iron Monument Found
- Bearings Shown Are On An Assumed Datum
- Benchmark: Top of Hydrant Between Tracts C & D, R.L.S. NO. 334
- Elevation = 907.90 Feet
- N.G.V.D. 1929 Adj.

Prepared By:  
**C.R. WINDEN & ASSOCIATES, INC.**  
 LAND PLANNING, SURVEYS & SITE DESIGN

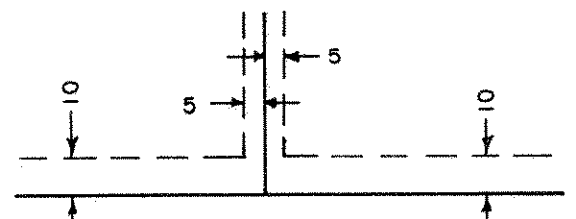
# MOORE'S OAKWOOD SECOND ADDITION



Scale: 1 Inch = 50 Feet



Drainage and Utility Easements shown thus:



Being 5 feet in width, unless otherwise indicated, and adjoining lot lines, and 10 feet in width and adjoining street lines, as shown on the plat.

○ Denotes 1/2 Inch x 18 Inch Iron Monument Set Marked By RLS 7726

● Denotes Iron Monument Found

Bearings Shown Are On An Assumed Datum

Benchmark: Top of Hydrant Between Tracts C & D, R.L.S. 334 Elevation = 907.90 Feet N.G.V.D. 1929 Adj.

Prepared By:  
**C.R. WINDEN & ASSOCIATES, INC.**  
LAND PLANNING, SURVEYS & SITE DESIGN