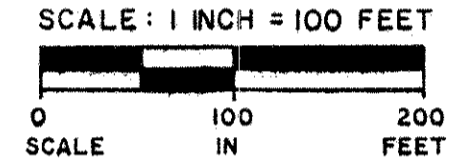


COPY

BUDD KOLBY THIRD ADDITION

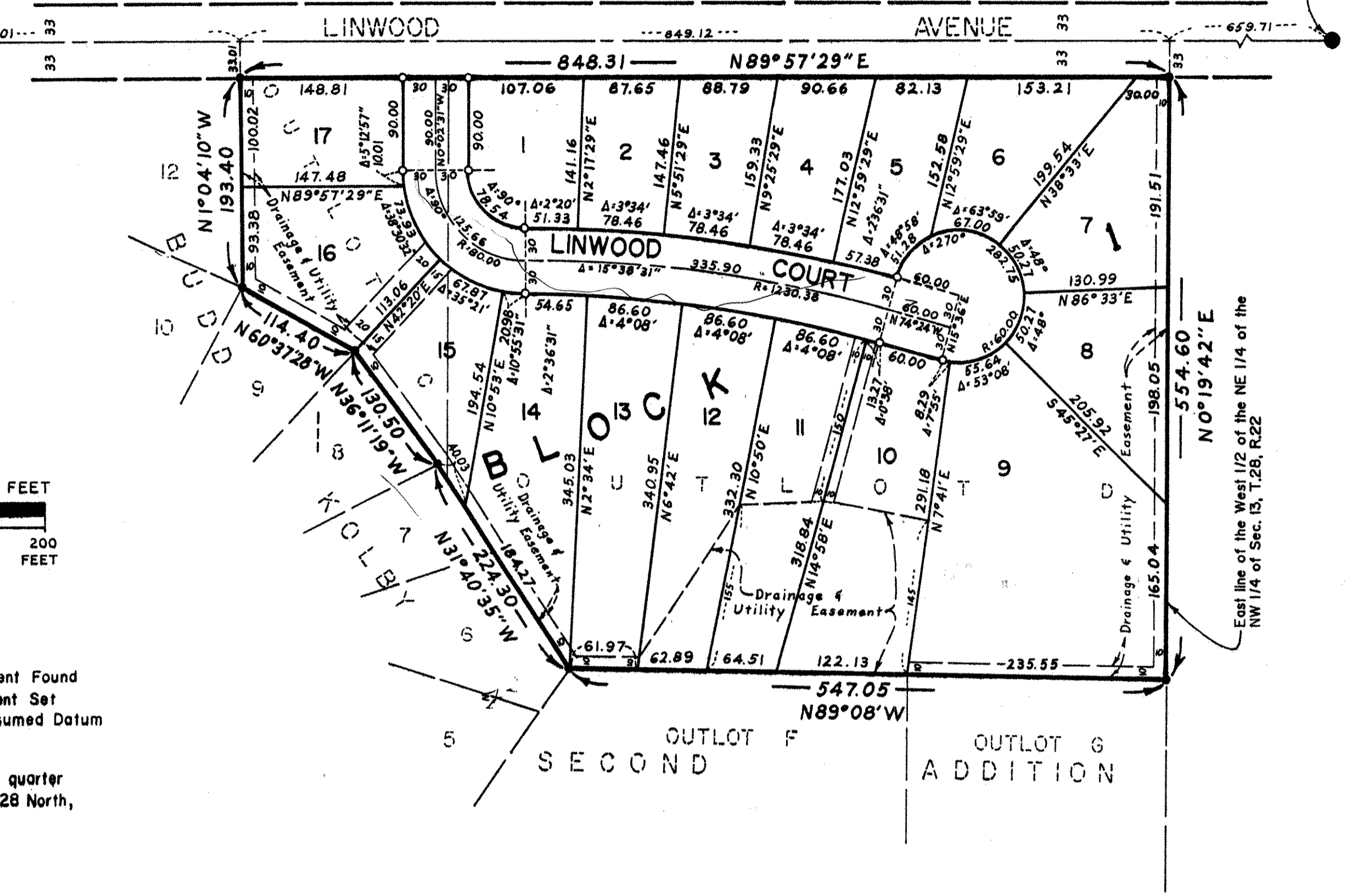
NW Corner of Sec. 13
(Ramsey County East
Iron Monument)

N 1/4 Corner of Sec. 13
(Ramsey County East
Iron Monument)



● Denotes Iron Monument Found
○ Denotes Iron Monument Set
Bearings Are On An Assumed Datum

Located in the Northwest quarter
of Section 13, Township 28 North,
Range 22 West



STATE OF MINNESOTA
COUNTY OF RAMSEY

The foregoing instrument was acknowledged before me this 1st day of April, 1988, by Gregory A. Schmit, President and by Kenneth D. Gervais, Vice President of Castle Design & Development Co., Inc., a Minnesota Corporation, on behalf of the corporation.

Neil R. Schummert
Notary Public, Ramsey County, Minnesota
My Commission Expires 12-13-90

STATE OF MINNESOTA
COUNTY OF RAMSEY

The foregoing instrument was acknowledged before me this 6th day of April, 1988, by G.E. Von Felot and by Stephen M. Johnson Vice Pres of The Phalen Bank, a Minnesota Corporation, on behalf of the corporation.

Neil R. Schummert
Notary Public, Ramsey County, Minnesota
My Commission Expires Aug 2, 1989

STATE OF MINNESOTA
COUNTY OF Ramsey

The foregoing instrument was acknowledged before me this 1st day of April, 1988, by Mary E. Webber and by Rolland L. Webber, wife and husband.

Neil R. Schummert
Notary Public, Ramsey County, Minnesota
My Commission Expires 12-13-90

I, Rodney H. Halvorson, hereby certify that I have surveyed and platted the property described in the dedication of this plat as BUDD KOLBY THIRD ADDITION; that this plat is a correct representation of said survey; that all distances are correctly shown on the plat; that all monuments have been correctly placed in the ground as shown; that the outside boundary lines are correctly designated on the plat; and there are no wetlands, or public highways other than as shown thereon.

Rodney H. Halvorson
Rodney H. Halvorson, Land Surveyor
Minnesota Registration No. 10947

STATE OF MINNESOTA
COUNTY OF Ramsey

The Surveyor's Certificate was subscribed and sworn to before me, a Notary Public, this 31st day of March, 1988.



Diane S. Halvorson
Notary Public, Ramsey County, Minnesota
My Commission Expires 7-30-93

Approved and accepted by the City Council of the City of Maplewood, Minnesota, this 28th day of March, 1988.

John H. Heston
Mayor

Lucille A. Luccini
Clerk

Taxes for the year 1988 on land described herein paid, no delinquent taxes and transfer entered, this 8 day of April, 1988.

Lou McKenna Director
Department of Property Taxation

By D. McDonough Deputy

Pursuant to Chapter 7, Minnesota Laws of 1976, this plat has been reviewed and approved, this 11th day of April, 1988, and the conditions of Minnesota Statutes, Section 505.03, Subdivision 2, have been fulfilled.

David D. Claypool
David D. Claypool
Acting Ramsey County Surveyor

County Recorder, County of Ramsey, State of Minnesota

I hereby certify that this plat of BUDD KOLBY THIRD ADDITION was filed in this office this 12 day of April, 1988, at 11:09 o'clock A.M. and was filed in Book 102 of Plats, Page 46, as Document No. 2435433.

John C. McLaughlin, County Recorder

By _____ Deputy

Know All Persons By These Presents that Castle Design & Development Co., Inc., a Minnesota Corporation, fee owner, and The Phalen Bank, a Minnesota Corporation, mortgagee, and Mary E. Webber, formerly known as Mary E. Kolby, and Rolland L. Webber, wife and husband, mortgagees, of the following described property situated in the City of Maplewood, Ramsey County, Minnesota to wit:

Outlots C and D, Budd Kolby Second Addition, Ramsey County, Minnesota.

Have caused the same to be surveyed, platted, and known as BUDD KOLBY THIRD ADDITION and do hereby dedicate to the public for public use forever the court, and drainage and utility easements as shown on the plat.

Castle Design & Development Co., Inc., a Minnesota Corporation, has caused these presents to be signed by its proper officers this 1st day of April, 1988.

Signed Castle Design & Development Co., Inc.

Gregory A. Schmit
Gregory A. Schmit, President

Kenneth D. Gervais
Kenneth D. Gervais, Vice President

The Phalen Bank, a Minnesota Corporation, has caused these presents to be signed by its proper officers and its corporate seal to be hereunto affixed this 6th day of April, 1988.

Signed: The Phalen Bank

G.E. Von Felot its President Stephen M. Johnson Vice Pres

Mary E. Webber and Rolland L. Webber, wife and husband, have hereunto set their hands this 1st day of April, 1988.

Signed:

Mary E. Webber
Mary E. Webber

Rolland L. Webber
Rolland L. Webber