

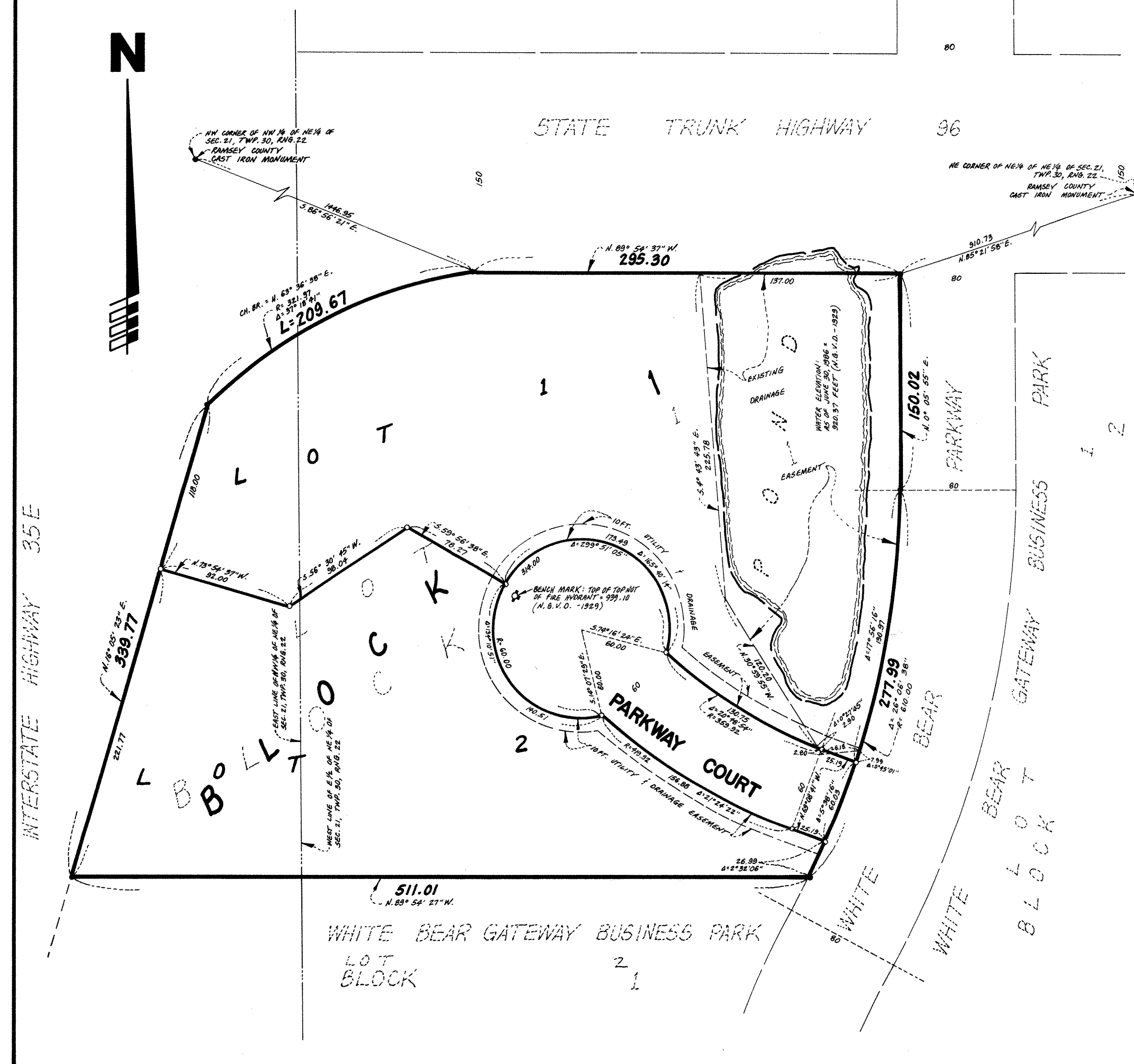
# WHITE BEAR GATEWAY BUSINESS PARK PLAT TWO

BEARINGS SHOWN ARE ON AN ASSUMED DATUM  
◦ DENOTES IRON MONUMENT SET  
• DENOTES IRON MONUMENT FOUND

SCALE IN FEET



Scale: 1 Inch = 50 Feet



Know All Persons By These Presents that 1501 Partnership, a Minnesota partnership, consisting of Darwin R. Reedy & James L. Rankin, owner of The Midway National Bank of St. Paul, a National Banking Association organized under the laws of the United States of America, mortgagee of the following described property situated in the City of White Bear Lake, Ramsey County, Minnesota:

Lot 1, Block 1, WHITE BEAR GATEWAY BUSINESS PARK

Have caused the same to be surveyed, platted and known as WHITE BEAR GATEWAY BUSINESS PARK PLAT TWO and do hereby dedicate to the public for public use forever the court and utility and drainage easements as shown on the plat. In witness whereof said 1501 Partnership, a Minnesota partnership has caused these presents to be signed by a Partner this 9 day of December, 1987. In witness whereof The Midway National Bank of St. Paul, a National Banking Association organized under the laws of the United States of America, has caused these presents to be signed by its proper officer this 15 day of December, 1987.

Signed: 1501 Partnership  
*[Signature]*  
Darwin R. Reedy a Partner

The Midway National Bank of St. Paul  
*[Signature]*  
Joseph M. Seitz Vice President

STATE OF MINNESOTA  
COUNTY OF Ramsey The foregoing instrument was acknowledged before me this 9 day of December, 1987, by Darwin R. Reedy, a Partner of 1501 Partnership, consisting of Darwin R. Reedy & James L. Rankin and Ralph W. Burnet, a Minnesota partnership, on behalf of the partnership.

VIVIAN M. MOORE  
NOTARY PUBLIC - MINNESOTA  
My Commission Expires June 15, 1989

*[Signature]*  
Notary Public, Ramsey County, Minnesota  
My Commission Expires June 15, 1989

STATE OF MINNESOTA  
COUNTY OF Ramsey The foregoing instrument was acknowledged before me this 10th day of December, 1987, by Joseph M. Seitz, Vice President of The Midway National Bank of St. Paul, a National Banking Association organized under the laws of the United States of America, on behalf of the corporation.

CHERYL L. HEDRICK  
NOTARY PUBLIC - MINNESOTA  
RAMSEY COUNTY  
My Comm. Expires Dec. 13, 1993

*[Signature]*  
Notary Public, Ramsey County, Minnesota  
My Commission Expires 12-13-93

I, Arthur E. Ostlund, hereby certify that I have surveyed and platted the property described in the dedication of this plat of WHITE BEAR GATEWAY BUSINESS PARK PLAT TWO; that this plat is a correct representation of said survey; that all distances are correctly shown on the plat; that all monuments have been correctly placed in the ground as shown; that the outside boundary lines are correctly designated on the plat; and there are no wet lands, easements or public highways other than as shown thereon.

*[Signature]*  
Arthur E. Ostlund, Land Surveyor  
Minnesota Registration No. 6122

STATE OF MINNESOTA  
COUNTY OF Ramsey The Surveyor's Certificate was subscribed and sworn to before me, a Notary Public, this 11th day of May, 1987.

*[Signature]*  
Warren O. Olson  
Notary Public, Ramsey County, Minnesota  
My Commission Expires October 20, 1988

Approved and accepted by the City Council of the City of White Bear Lake, Minnesota this 14th day of April, 1987.

*[Signature]* Mayor

*[Signature]* Clerk

Taxes for the year 1987 on the land described herein paid, no delinquent taxes and transfer entered, this 27th day of December, 1987.

*[Signature]* Director  
Department of Property Taxation

By *[Signature]* Deputy

Pursuant to Chapter 7, Minnesota Laws of 1976, this plat has been reviewed and approved, this 29th day of December, 1987, and the conditions of Minnesota Statutes, Section 505.03, Subdivision 2, have been fulfilled.

*[Signature]*  
David D. Claypool  
Acting Ramsey County Surveyor

County Recorder, County of Ramsey, State of Minnesota  
I hereby certify that this plat of WHITE BEAR GATEWAY BUSINESS PARK PLAT TWO was filed in this office this 30 day of Dec., 1987, at 3:40 o'clock P. M. and was filed in Book 102 of Plats, Page 24, as Document No. 241422.

John C. McLaughlin, County Recorder

By \_\_\_\_\_ Deputy